



PIDX XML Purchase Order Implementation Guide

Version 1.1 **2009-07-27**

Petroleum Industry Data eXchange (PIDX)

July 27, 2009

Table of Contents

Table of Contents	ii
1.0 Revision History	1
2.0 Executive Summary	2
2.1 Purpose	2
2.1.1 Replicable	2
2.1.2 Extensibility/Modifiability	2
2.2 Scope	2
2.2.1 Audience	2
2.2.2 Transport, Routing, and Packaging and Data Payload	2
2.3 References	3
2.3.1 PIDX Documents	3
2.3.2 W3C Documents	3
2.3.3 RosettaNet Documents	3
2.4 Approach	4
2.5 Define the Business Processes	4
2.6 Identify XML Transactions	4
2.7 Define XML Transactions Elements	4
3.0 Implementation Checklist	5
3.1 Administrative	5
3.2 Define Project Requirements	5
3.3 Define Technical Requirements	5
3.4 Define Business Process Requirements	6
3.5 XML Transaction Checklist	6
3.6 Data Communication checklist	6
3.7 Application Checklist	6
3.8 Operations Checklist	6
4.0 Order Create	7
4.1 Business Process Diagram	7
4.2 Legend to Tables	8
4.3 Document Detail	9
5.0 Order Response	53
5.1 Business Process Diagram	53
5.2 Legend to Tables	54
5.3 Document Detail	55
6.0 Order Change	101
6.1 Business Process Diagram	101
6.2 Legend to Tables	102
6.3 Document Detail	103
Appendix A: PIDX XML Schema to PIDX "PIP" Number	147



Appendix B: GlobalPartnerRoleClassificationCode Values	148
Appendix C: GlobalBusinessServiceCode Values	152
Appendix D: GlobalBusinessActionCode Values	153
Appendix E: GlobalBusinessActionCode Values	158
Appendix F: GlobalMimeTypeQualifierCode Values	159
Appendix G: Cementing Template	171
Appendix H: Glossary	186

1.0 Revision History

Version	Date (YYYY-MM-DD)	Person	Description of Change
0.1	2001-11-30	Jason Roberts	Draft
0.2	2002-02-14	Jason Roberts	Initial Release
1.0	2009-07-27	John Stukes	Initial Purchase Order Release
1.1	2011-11-03	John Stukes	PIDX Derivative Works

2.0 Executive Summary

2.1 Purpose

The purpose of the PIDX Purchase Order Implementation Guide document is to assist trading partners to implement and use the PIDX XML instance (data) documents. The PIDX Purchase Order Implementation Guide document is the property of the Petroleum Information Data Exchange, International (PIDX International).

2.1.1 Replicable

Each group of trading partners has unique implementation requirements. The PIDX Purchase Order Implementation Guide document describes a generalized process to identify those requirements and establish an agreement to meet each trading partner's business process and associated data requirements.

2.1.2 Extensibility/Modifiability

The PIDX Purchase Order Implementation Guide document was created with the realization that changes will occur to meet changing technology and business requirements.

The PIDX Purchase Order Implementation Guide document may be modified by approval of the PIDX Standards and Guidelines Committee. Submit requests for document changes to the PIDX Standards and Guidelines Committee for review, revision, and approval.

Note changes to this document in the Revision History (section 1) of this document.

2.2 Scope

2.2.1 Audience

The targeted audience of the PIDX Purchase Order Implementation Guide document is petroleum industry individuals who are responsible for implementing PIDX XML documents. This document assumes

- An understanding of XML documents, W3C XML Schemas including XML Datatypes, XML Namespaces, and a general knowledge of business data processing
- An understanding of the PIDX Transport, Routing, and Packaging (TRP) Standards
- An understanding of the RosettaNet Implementation Framework (RNIF) 2.0
- An understanding of the PIDX XML Schema Standards
- An understanding of the specific XML Schemas which will be used to define data which is exchanged between/among the trading partners

This document does not attempt to teach a person who is unfamiliar with XML documents, XML Schemas, RosettaNet Implementation Framework (RNIF) 2.0 how to use these technologies.

2.2.2 Transport, Routing, and Packaging and Data Payload

The PIDX Purchase Order Implementation Guide address issues relating to both the data-carrying XML documents (payload) and the PIDX Transport, Routing, and Packaging requirements which is based on RNIF 2.0.

2.3 References

2.3.1 PIDX Documents

The following PIDX documents support the PIDX XML Schema Standards.

- PIDX XML Standards
- Petroleum Industry Data Dictionary
- PIDX Glossary

2.3.2 W3C Documents

The PIDX XML Schemas Standards conform to the May 2, 2001 XML Schema Recommendation published by the World Wide Web Consortium (W3C).

XML Schema Part 0: Primer : <http://www.w3.org/TR/2001/REC-xmlschema-0-20010502/>

XML Schema Part 1: Structures: <http://www.w3.org/TR/2001/REC-xmlschema-1-20010502/>

XML Schema Part 2: Datatypes: <http://www.w3.org/TR/2001/REC-xmlschema-2-20010502/>

2.3.3 RosettaNet Documents

The PIDX Routing, Transmission, and Packaging Standards are built on RosettaNet Implementation Framework (RNIF) 2.0 standards. The RNIF 2.0 standards may be downloaded from the RosettaNet web site: <http://www.RosettaNet.org>

2.4 Approach

The general approach to implementing a PIDX process between/among trading partners includes the following steps:

1. Define the Business Processes and supporting interactions between/among the business partners.
2. Identify the PIDX XML transactions required to support the PO Business Process.
3. Identify detailed data requirements for each transaction.

2.5 Define the Business Processes

Use the PIDX Business Process diagrams to define the business process that the trading partners will use to perform the business function. Redraw the Business Process diagrams to define the specific business process that the trading partners will use.

2.6 Identify XML Transactions

Use the Business Process diagrams to define which PIDX XML transactions will be exchanged by the trading partners. The currently defined PIDX transactions are:

- OrderCreate
- OrderChange
- OrderResponse

2.7 Define XML Transactions Elements

Trading partners need to identify each data element within each XML transaction that will be transferred. For each data element the trading partners need to identify:

- If the data element is mandatory, optional, or forbidden
- The data format of the data element
- Possible default values for the data element if absent
- Relationships between/among multiple data elements

The trading partners must evaluate all repeating groups of elements. They must define constraints on element groups and the number and meaning of repeating groups.

3.0 Implementation Checklist

Please refer to the following implementation checklist when planning and implementing the use of PIDX XML Schemas.

3.1 Administrative

- Create required legal agreement between or among trading partners
- Define operating procedures in accord with anti-trust guidelines
- Establish project objectives, scope
- Establish project contacts: business, technical, operational
- Develop an implementation project plan

3.2 Define Project Requirements

- Define business process and transaction requirements
- Define error-processing requirements
- Define problem resolution requirements
- Define security requirements
 - Confidentiality
 - Integrity
 - Availability
 - Non-repudiation
- Define application interface requirements (proprietary to each trading partner)
- Define transaction storage and audit requirements

3.3 Define Technical Requirements

- Define each Action and Signal message that will be exchanged
 - Define field by field requirements for each Action (business) message
 - Define field by field requirements for each Signal message
- Define data communication and network (firewall, router) access requirements
- Define transmission protocol (HTTP(S), SMTP, other) requirements
- Define each field in TRP Preamble header
- Define each field in TRP Delivery header
- Define each field in TRP Service header
- Define each TRP attachment
- Define what will be encrypted
- Define use of digital signatures
- Define use of the message "digest" for non-repudiation
- Define business recovery requirements
- Define hardware requirements
- Define software requirements

3.4 Define Business Process Requirements

- Define internal business process requirements (proprietary to each trading partner)
- Train internal staff (proprietary to each trading partner)

3.5 XML Transaction Checklist

- Develop, test, and implement the creation of each Action TRP transaction
- Develop, test, and implement the acceptance and processing of each Action TRP transaction
- Develop, test, and implement the creation of each Signal TRP transaction
- Develop, test, and implement the acceptance and processing of each Signal TRP transaction

3.6 Data Communication checklist

- Install, configure, test, and implement each network component
- Exchange IP addresses/names
- Configure firewalls, routers, other communications equipment

3.7 Application Checklist

- Define, build/install, test, and implement application interfaces (proprietary to each trading partner)
- Define, build/install packaging, unpackaging processes
- Define, build/install, test, and implement error processes
- Implement application support processes

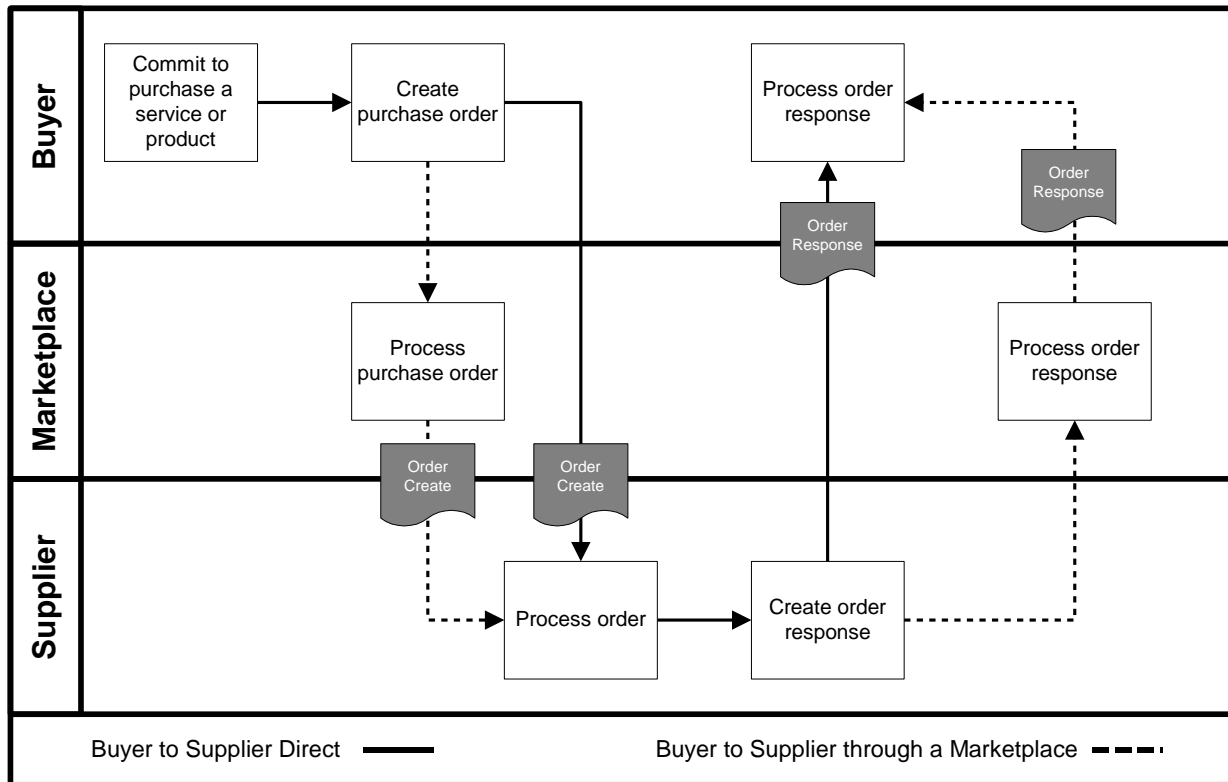
3.8 Operations Checklist

- Install, configure, implement hardware
- Install, configure, implement software
- Install, configure, implement network components
- Install, configure, implement data storage and backup
- Define, test, and implement business recovery processes
- Train operation and network support personnel

4.0 Order Create

4.1 Business Process Diagram

Below is the Business Process Diagram for the Order Create transaction, using either a B2B or Marketplace model. Solid lines indicate transactions between a Buyer and Seller directly. Dashed lines illustrate the transactions between the Buyer and Seller via a Marketplace. These are not the only two methods in which the process can take place, however, they represent the two primary processes. Third parties other than a Marketplace may be involved if necessary.



B2B Model - A Buyer or buying organization makes a commitment to purchase a service or complex product. A purchase order is created and sent to the Seller. The Seller processes the order and sends a response to the Buyer either accepting or denying the terms of the order.

Marketplace Model - A Buyer or buying organization makes a commitment to purchase a service or complex product. A purchase order is created on a Marketplace and sent to the Seller. The Seller processes the order and sends a response to the Buyer through the Marketplace either accepting or denying the terms of the order.

The Order Create document is used when a Buyer has made a commitment to purchase a service or complex product. The order may be the result of the acceptance of a Request Requisition Return, the acceptance of a quote, or as a completely new request.

4.2 Legend to Tables

The following tables detail the elements and attributes that make up the Order Create. The legend below provides guidance to understanding the element tables. The legend is an example only and is not part of the document standard data.

Telephone 1

2

A collection of elements detailing information about a telephone number.

3	note							
	level	OrderCreateProperties OrderCreateDetails	4					
	children	<p>5 Name</p> <p>PhoneNumber 6</p> <p>A numerical sequence to reach a telephone attached to a communication network.</p> <p>PhoneNumberExtension 7</p> <p>An extension number that is needed to further identify the phone number.</p> <p>TelecomCountryCode 8</p> <p>The dialing code from another country to access the telephone network in another country.</p> <p>TelecomAreaCode 9</p> <p>The area code within a country or jurisdiction, if needed, to access local telephones within the country.</p>	6	7	8	Use M	Max 1	
	parent(s)	ContactInformation	9					
	attributes	<p>Name</p> <p>telephoneIndicator 10</p> <p>A code to indicate the type of phone number being given.</p> <p>Fax</p> <p>Mobile</p> <p>Pager</p> <p>Voice</p> <p>Other</p>	11	14	12	13	Use O	Fixed

Legend

1	The name of the element.
2	The definition of the element.
3	Contains any business rules or comments about the element
4	Identifies whether or not the element is under the Property, Detail, or Summary level of the document
5	Contains the name of the child elements and their definitions. Those elements in blue are links to the element specification. Only those elements that contain children or attributes are hyperlinked.
6	Indicates the data type of the element.
7	Indicates whether the element is mandatory (M) or optional (O).
8	Indicates whether the element can have a maximum of one occurrence (1) or unbounded multiple occurrences (U)
9	Indicates the parent element of the element.
10	Contains the name of any attributes and their definitions.
11	Indicates the data type of the attribute. If the type is blank, then the element contains children rather than data.
12	Indicates whether the attribute is mandatory (M) or optional (O).
13	Provides a fixed value for the attribute.
14	The shaded areas provide either code list values, rules, or notes about the child element or attribute.

The document, its properties, details, line item, sub-line item, and summary elements are presented first. They are followed by an alphabetical listing of those elements used in the document and have children or attributes.

4.3 Document Detail

OrderCreate

The root element of the Order Create message. It is used to place an order for products and/or services.

note		Type	Use	Max
children	Name			
	OrderCreateProperties		M	1
	A collection of elements defining the order "meta-data" or "common data".			
	OrderCreateDetails		M	1
	A collection of elements defining the details of the Order Create message.			
	OrderCreateSummary		M	1
	A collection of elements detailing the totals of the order.			
attributes	Name	Type	Use	Fixed
	transactionPurposeIndicator	string	M	
	A code indicating the purpose of the transaction.			
	Add			
	Cancellation			
	Change			
	Confirmation			
	Delete			
	Duplicate			
	Original			
	Replace			
Request				
Other				
version	decimal	M	1.0	
A fixed number indicating the version of the PIDX XML Standard on which the transaction is based.				

OrderCreateProperties

A collection of elements defining the order "meta-data" or "common data".

note		Type	Use	Max
children	Name			
	PurchaseOrderNumber	string	M	1
	A unique identifier for an Order Create message.			
	PurchaseOrderIssuedDate	date	M	1
	The date upon which an order was created or deemed to have been issued.			
	Format is CCYY-MM-DD where "CC" represents the century, "YY" the year, "MM" the month and "DD" the day.			
	<u>PartnerInformation</u>		M	1
	A collection of elements detailing partner information.			
	At a minimum, a BillTo and ShipTo, or a BillAndShipTo is required.			
	PurchaseOrderTypeCode	string	M	1
	A code indicating the kind of purchase order.			
	Confirmation			
	EmergencyOrder			
	ReleaseOrDeliveryOrder			
	RushOrder			
	StandAloneOrder			
	SupplyOrServiceOrder			
	Other			
	RevisionNumber	string	O	1
	A number indicating the version of the document. It is used if a message is resent in its entirety to replace an earlier version.			
	ReleaseNumber	string	O	1
	A number identifying a release against a purchase order previously placed by the parties involved in the transaction. It is the equivalent to a work order number.			
	SpecialInvoicePreference	string	O	1
	A code indicating any special invoice requirements.			
	InvoiceNotRequired			
	Other			
	<u>PrimaryCurrency</u>		O	1
	The currency code indicating the currency to be used for the transaction.			
	<u>SecondCurrency</u>		O	1
	The currency code indicating a second currency, such as for European countries using the Euro and a local currency.			
	LanguageCode	string	O	1
	A code indicating the language used for the transaction.			
	Use the codelist from ISO 639-2:1998 Codes for the representation of names of languages – Part 2: Alpha-3 Code.			
	<u>JobLocationInformation</u>		O	1
	A collection of elements giving details of a job location.			
	<u>ServiceDateTime</u>	datetime	O	U
	The actual and/or schedule dates for a service.			
	<u>CountryOfOrigin</u>		O	1
	The country where product originates or is deemed to have originated.			

	CountryOfFinalDestination		O	1
	The country where product is ultimately delivered or is deemed to have been delivered.			
	TransportInformation		O	1
	A code indicating the mode of transportation used to move product.			
	PaymentTerms		O	1
	A collection of elements detailing payment terms information.			
	CreditCardInformation		O	1
	A collection of elements defining the details of a credit card.			
	SpecialInstructions	string	O	U
	A free-form textual description of special requirements.			
	ReferenceInformation		O	U
	A collection of elements detailing references to information that reside outside of the current transaction message.			
	Attachment		O	U
	A collection of elements defining the details of an attachment to the document.			
	Comment	string	O	1
	A free-form textual structure for general information or comments.			
parent(s)	OrderCreate			

OrderCreateDetails

A collection of elements defining the details of the Order Create message.

note				
children	Name	Type	Use	Max
	OrderCreateLineItem		M	U
	A collection of elements defining the details of the line items making up the order.			
parent(s)	OrderCreate			

OrderCreateLineItem

A collection of elements defining the details of the line items making up the order.

note		Type	Use	Max
children	Name			
	LineItemNumber	string	M	1
	A sequential individual line identifier within a document containing service or item information.			
	LineItemInformation		M	1
	A collection of elements detailing identifying information about a line item.			
	OrderQuantity		M	1
	The number of units of an item or service ordered.			
	CommodityCode	string	O	U
	A code indicating the categorization of a product or service in accordance with a particular standard.			
	PartnerInformation		O	U
	A collection of elements detailing partner information.			
	JobLocationInformation		O	1
	A collection of elements giving details of a job location.			
	Pricing		O	1
	A collection of elements detailing price information.			
	AllowanceOrCharge		O	U
	A collection of elements defining the details of an allowance or charge to the customer.			
	Tax		O	U
	A collection of elements detailing information about tax applied to a transaction.			
	LineItemTotal		O	1
	The net total monetary amount for the line item.			
	ServiceDateTime	datetime	O	U
	The actual and/or schedule dates for a service.			
	CountryOfOrigin		O	1
	The country where product originates or is deemed to have originated.			
	CountryOfFinalDestination		O	1
	The country where product is ultimately delivered or is deemed to have been delivered.			
	TransportInformation		O	1
	A code indicating the mode of transportation used to move product.			
	PaymentTerms		O	1
	A collection of elements detailing payment terms information.			
	CreditCardInformation		O	1
	A collection of elements defining the details of a credit card.			
	SpecialInstructions	string	O	U
	A free-form textual description of special requirements.			
	PackagingCharacteristicCode	string	O	U
	A code indicating the marking, packaging, loading and related characteristics being described.			
	PackageSpecifications			
	ProductMarking			
	SkidPalletType			
	TypeOfPackage			

	<p>Other</p> <p>PackagingCharacteristicDescription string</p> <p>Free-form text providing any additional information associated with the Packaging Characteristic Code.</p> <p>ReferenceInformation O U</p> <p>A collection of elements detailing references to information that reside outside of the current transaction message.</p> <p>Attachment O U</p> <p>A collection of elements defining the details of an attachment to the document.</p> <p>Comment string</p> <p>A free-form textual structure for general information or comments.</p> <p>OrderCreateSubLineItem O U</p> <p>A collection of elements defining the details of the sub line items of an order. It is used if a line item needs to be broken down into further detail.</p>
parent(s)	OrderCreateDetails

OrderCreateSubLineItem

A collection of elements defining the details of the sub line items of an order. It is used if a line item needs to be broken down into further detail.

note		Type	Use	Max
children	Name			
	SubLineItemNumber	string	M	1
	The sub-line item number relating to the primary line item referenced in the message.			
	<u>LineItemInformation</u>		M	1
	A collection of elements detailing identifying information about a line item.			
	<u>OrderQuantity</u>		M	1
	The number of units of an item or service ordered.			
	<u>CommodityCode</u>	string	O	U
	A code indicating the categorization of a product or service in accordance with a particular standard.			
	<u>PartnerInformation</u>		O	U
	A collection of elements detailing partner information.			
	<u>JobLocationInformation</u>		O	1
	A collection of elements giving details of a job location.			
	<u>Pricing</u>		O	1
	A collection of elements detailing price information.			
	<u>AllowanceOrCharge</u>		O	U
	A collection of elements defining the details of an allowance or charge to the customer.			
	<u>Tax</u>		O	U
	A collection of elements detailing information about tax applied to a transaction.			
	<u>LineItemTotal</u>		O	1
	The net total monetary amount for the line item.			
	<u>ServiceDateTime</u>	datetime	O	U
	The actual and/or schedule dates for a service.			
	<u>CountryOfOrigin</u>		O	1
	The country where product originates or is deemed to have originated.			
	<u>CountryOfFinalDestination</u>		O	1
	The country where product is ultimately delivered or is deemed to have been delivered.			
	<u>TransportInformation</u>		O	1
	A code indicating the mode of transportation used to move product.			
	<u>PaymentTerms</u>		O	1
	A collection of elements detailing payment terms information.			
	<u>CreditCardInformation</u>		O	1
	A collection of elements defining the details of a credit card.			
	<u>SpecialInstructions</u>	string	O	U
	A free-form textual description of special requirements.			
	PackagingCharacteristicCode	string	O	U
	A code indicating the marking, packaging, loading and related characteristics being described.			
	PackageSpecifications			
	ProductMarking			
	SkidPalletType			

	TypeOfPackage			
	Other			
	PackagingCharacteristicDescription	string	O	U
	Free-form text providing any additional information associated with the Packaging Characteristic Code.			
	ReferenceInformation		O	U
	A collection of elements detailing references to information that reside outside of the current transaction message.			
	Attachment		O	U
	A collection of elements defining the details of an attachment to the document.			
	Comment	string	O	1
	A free-form textual structure for general information or comments.			
parent(s)	OrderCreateLinItem			

OrderCreateSummary

A collection of elements detailing the totals of the order.

note				
children	Name	Type	Use	Max
	TotalLinItems	integer	M	1
	The total number of line items contained in a message.			
	TotalAmount		O	1
	The total monetary amount of an order.			
parent(s)	OrderCreate			

AddressInformation

A collection of elements defining the details of an address.

note				
level	OrderCreateProperties OrderCreateDetails			
children	<p>Name</p> <p>POBoxNumber The identity of a physical box within a postal facility to accept and receive mail.</p> <p>BuildingHouseNumber The alphanumeric identifier of a building as a part of an address.</p> <p>StreetName The name of a street as part of an address.</p> <p>AddressLine An occurrence of a generally accepted formatted line of data such that when combined with the entire address structure there is sufficient information for delivery or location purposes.</p> <p>CityName The name of the city or municipality.</p> <p>StateProvince The name of the municipality or town as a location for mailing, siting and other geographic functions.</p> <p>PostalCode The code assigned by local postal authorities to delivery addresses.</p> <p>PostalCountry The country code indicating the country to which mail should be delivered.</p> <p>CountyName The name of the county.</p> <p>LocationIdentifier A unique identifier for a physical location.</p>	Type	Use	Max
		string	O	1
		string	O	1
		string	O	1
		string	O	U
		string	O	1
		string	O	1
		string	O	1
		string	O	1
		string	O	1
parent(s)	JobLocationInformation Location PartnerInformation TaxLocation			

AllowanceOrCharge

A collection of elements defining the details of an allowance or charge to the customer.

note	<ul style="list-style-type: none"> If AllowanceOrCharge is used, then at least one of AllowanceOrChargeRate, AllowanceOrChargeTotalAmount, or AllowanceOrChargePercent is required. 			
level	OrderCreateDetails			
children	<p>Name</p> <p>AllowanceOrChargeTotalAmount</p> <p>The total monetary amount for the allowance or charge.</p> <p>AllowanceOrChargeRate</p> <p>The rate per unit of the allowance or charge.</p> <p>AllowanceOrChargePercent</p> <p>The allowance or charge expressed as a percentage.</p> <p>AllowanceOrChargeNumber</p> <p>The identifier assigned by a vendor referencing an allowance, promotion, deal or charge.</p> <p>AllowanceOrChargeTypeCode</p> <p>A code identifying the kind of allowance or charge being described.</p> <p>Freight</p> <p>FuelSurcharge</p> <p>SpecialHandlingService</p> <p>Discount</p> <p>FlatRate</p> <p>EngineeringCharge</p> <p>InvoiceAdjustment</p> <p>InsuranceSurcharge</p> <p>OneTimeLicenseFee</p> <p>Royalties</p> <p>MiscellaneousCharge</p> <p>PostageCharge</p> <p>TrailerRentalCharge</p> <p>TransportationDirectBilling</p> <p>TransportationVendorProvided</p> <p>Other</p> <p>MethodOfHandlingCode</p> <p>A code which describes how a particular allowance or charge should be handled.</p> <p>OffInvoice</p> <p>ChargeToBePaidByCustomer</p> <p>Other</p> <p>AllowanceOrChargeDescription</p> <p>A free form description used to clarify the related allowance and charge data elements and their content.</p> <p>AllowanceOrChargeQuantity</p> <p>The quantity on which the allowance or charge is based if it is different from the purchase order or invoice quantity.</p>	Type	Use	Max
			0	1
			0	1
		decimal	0	1
		string	0	1
		string	0	1
			0	1
		string	0	1
			0	1
		string	0	1
			0	1
parent(s)	<p>OrderCreateLineItem</p> <p>OrderCreateSubLineItem</p>			

attributes	Name	Type	Use	Fixed
	allowanceOrChargeIndicator A code to indicate whether the information relates to an allowance or charge. Allowance Charge Other	string	M	

AllowanceOrChargePercent

The allowance or charge expressed as a percentage.

note				
level	OrderCreateDetails			
parent(s)	AllowanceOrCharge			
attributes	Name	Type	Use	Fixed
	percentIndicator	string	O	
	A code indicating on what basis the allowance or charge percent is calculated.			

AllowanceOrChargeQuantity

The quantity on which the allowance or charge is based if it is different from the purchase order or invoice quantity.

note				
level	OrderCreateDetails			
children	Name	Type	Use	Max
	Quantity	decimal	M	1
	A numeric count of measure.			
	UnitOfMeasureCode	string	M	1
	A code identifying the units in which measurement is expressed.			
	Use values from the DE 355 code list contained in ASC X12 release 3030.			
parent(s)	AllowanceOrCharge			

AllowanceOrChargeRate

The rate per unit of the allowance or charge.

note				
level	OrderCreateDetails			
children	Name	Type	Use	Max
	MonetaryAmount	decimal	M	1
	The currency value of a transaction or item.			
	UnitOfMeasureCode	string	M	1
	A code identifying the units in which measurement is expressed.			
	Use values from the DE 355 code list contained in ASC X12 release 3030.			
	CurrencyCode	string	O	1
	A code indicating the currency in which the monetary amount is specified.			
	Use the codelist from ISO 4217:2001 Codes for the representation of currencies and funds.			
parent(s)	AllowanceOrCharge			

AllowanceOrChargeTotalAmount

The total monetary amount for the allowance or charge.

note				
level	OrderCreateDetails			
children	Name	Type	Use	Max
	MonetaryAmount	decimal	M	1
	The currency value of a transaction or item.			
	CurrencyCode	string	O	1

	<p>A code indicating the currency in which the monetary amount is specified.</p> <p>Use the codelist from ISO 4217:2001 Codes for the representation of currencies and funds.</p>
parent(s)	AllowanceOrCharge

AlternativeCommunicationMethod

Additional methods of communication, such as an IP Address or Printer ID, in addition to those specifically listed elsewhere in contact or address information.

note																																																									
level	OrderCreateProperties OrderCreateDetails																																																								
parent(s)	ContactInformation																																																								
attributes	<table border="1"> <thead> <tr> <th>Name</th> <th>Type</th> <th>Use</th> <th>Fixed</th> </tr> </thead> <tbody> <tr> <td>alternativeCommunicationMethodIndicator</td> <td>string</td> <td>M</td> <td></td> </tr> <tr> <td colspan="4">A code to indicate the type of alternative communication method.</td> </tr> <tr> <td>AUTOVON</td> <td></td> <td></td> <td></td> </tr> <tr> <td>EDIAccessNumber</td> <td></td> <td></td> <td></td> </tr> <tr> <td>FederalTelecommunicationsSystem</td> <td></td> <td></td> <td></td> </tr> <tr> <td>IPAddress</td> <td></td> <td></td> <td></td> </tr> <tr> <td>PacketSwitching</td> <td></td> <td></td> <td></td> </tr> <tr> <td>PrinterID</td> <td></td> <td></td> <td></td> </tr> <tr> <td>StationCode</td> <td></td> <td></td> <td></td> </tr> <tr> <td>Telemail</td> <td></td> <td></td> <td></td> </tr> <tr> <td>Telex</td> <td></td> <td></td> <td></td> </tr> <tr> <td>TWX</td> <td></td> <td></td> <td></td> </tr> <tr> <td>Other</td> <td></td> <td></td> <td></td> </tr> </tbody> </table>	Name	Type	Use	Fixed	alternativeCommunicationMethodIndicator	string	M		A code to indicate the type of alternative communication method.				AUTOVON				EDIAccessNumber				FederalTelecommunicationsSystem				IPAddress				PacketSwitching				PrinterID				StationCode				Telemail				Telex				TWX				Other			
Name	Type	Use	Fixed																																																						
alternativeCommunicationMethodIndicator	string	M																																																							
A code to indicate the type of alternative communication method.																																																									
AUTOVON																																																									
EDIAccessNumber																																																									
FederalTelecommunicationsSystem																																																									
IPAddress																																																									
PacketSwitching																																																									
PrinterID																																																									
StationCode																																																									
Telemail																																																									
Telex																																																									
TWX																																																									
Other																																																									

Attachment

A collection of elements defining the details of an attachment to the document.

note																																																													
level	OrderCreateProperties OrderCreateDetails																																																												
children	<table border="1"> <thead> <tr> <th>Name</th> <th>Type</th> <th>Use</th> <th>Max</th> </tr> </thead> <tbody> <tr> <td>AttachmentPurposeCode</td> <td>string</td> <td>O</td> <td>1</td> </tr> <tr> <td colspan="4">A code to indicate the purpose of the attachment.</td> </tr> <tr> <td>Template</td> <td></td> <td></td> <td></td> </tr> <tr> <td>Other</td> <td></td> <td></td> <td></td> </tr> <tr> <td>FileName</td> <td>string</td> <td>O</td> <td>1</td> </tr> <tr> <td colspan="4">The name of the file in an attachment.</td> </tr> <tr> <td>AttachmentTitle</td> <td>string</td> <td>O</td> <td>1</td> </tr> <tr> <td colspan="4">The title of the attachment.</td> </tr> <tr> <td>AttachmentDescription</td> <td>string</td> <td>O</td> <td>1</td> </tr> <tr> <td colspan="4">A free-form textual description of the attachment.</td> </tr> <tr> <td>FileType</td> <td>string</td> <td>O</td> <td>1</td> </tr> <tr> <td colspan="4">The type of the file in an attachment.</td> </tr> <tr> <td>AttachmentLocation</td> <td>string</td> <td>O</td> <td>1</td> </tr> <tr> <td colspan="4">The location of the attachment, such as a URL.</td> </tr> </tbody> </table>	Name	Type	Use	Max	AttachmentPurposeCode	string	O	1	A code to indicate the purpose of the attachment.				Template				Other				FileName	string	O	1	The name of the file in an attachment.				AttachmentTitle	string	O	1	The title of the attachment.				AttachmentDescription	string	O	1	A free-form textual description of the attachment.				FileType	string	O	1	The type of the file in an attachment.				AttachmentLocation	string	O	1	The location of the attachment, such as a URL.			
Name	Type	Use	Max																																																										
AttachmentPurposeCode	string	O	1																																																										
A code to indicate the purpose of the attachment.																																																													
Template																																																													
Other																																																													
FileName	string	O	1																																																										
The name of the file in an attachment.																																																													
AttachmentTitle	string	O	1																																																										
The title of the attachment.																																																													
AttachmentDescription	string	O	1																																																										
A free-form textual description of the attachment.																																																													
FileType	string	O	1																																																										
The type of the file in an attachment.																																																													
AttachmentLocation	string	O	1																																																										
The location of the attachment, such as a URL.																																																													
parent(s)	OrderCreateLineItem OrderCreateProperties OrderCreateSubLineItem																																																												

Block

A collection of elements defining the details of a block, which identifies a location.

note				
level	OrderCreateProperties OrderCreateDetails			
children	Name BlockName The name of the block, which identifies a location. OCSGNumber The Outer Continental Shelf Gulf number. StateLease Lease on state land.	Type string string string	Use 0 0 0	Max 1 1 1
parent(s)	GeographicalInformation			

CommodityCode

A code indicating the categorization of a product or service in accordance with a particular standard.

note				
level	OrderCreateDetails			
parent(s)	OrderCreateLineItem OrderCreateSubLineItem			
attributes	Name agencyIndicator A code indicating what agency or organization is responsible for defining the commodity code list.	Type string	Use 0	Fixed

ContactIdentifier

The identifier of the contact person or department.

note				
level	OrderCreateProperties OrderCreateDetails			
parent(s)	ContactInformation			
attributes	Name contactIdentifierIndicator A code to identify the origin of the contact identifier. AssignedByBuyer AssignedBySeller EmployeeID Other	Type string	Use 0	Fixed

ContactInformation

A collection of elements defining details of communication for a contact person.

note	• It is recommended that ContactInformation be used at either the Property or Detail level, but not both.			
level	OrderCreateProperties OrderCreateDetails			
children	Name	Type	Use	Max
	ContactIdentifier	string	O	1
	The identifier of the contact person or department.			
	ContactName	string	O	1
	The name of the contact person within the organization.			
	ContactDescription	string	O	1
	A free-form textual description of the contact.			
Telephone			O	U
A collection of elements detailing information about a telephone number.				
EmailAddress	string	O	1	
The address assigned to a person or organization to receive electronic messages.				
AlternativeCommunicationMethod	string	O	U	
Additional methods of communication, such as an IP Address or Printer ID, in addition to those specifically listed elsewhere in contact or address information.				
parent(s)	PartnerInformation			
attributes	Name	Type	Use	Fixed
	contactInformationIndicator	string	M	
	A code indicating the function of the contact.			
	BuyerDepartment			
	DeliveryContact			
	DesignEngineer			
	Engineer			
	EnteredBy			
	FieldRepresentative			
	OfficeRepresentative			
	OrderContact			
	PurchasingAgent			
	QuotePreparer			
	QuoteRequestor			
	RFQContact			
	SalesRepresentative			
	ServiceCoordinator			
TechnicalMarketingRepresentative				
Other				

CountryOfFinalDestination

The country where product is ultimately delivered or is deemed to have been delivered.

note				
level	OrderCreateProperties OrderCreateDetails			
children	Name	Type	Use	Max

	<p>CountryCode string M 1</p> <p>A code indicating a country.</p> <p>Use the codelist from ISO 3166-1:1997 Codes for the representation of names of countries and their subdivisions – Part 1: Country Codes.</p>
parent(s)	<p>OrderCreateLineItem</p> <p>OrderCreateProperties</p> <p>OrderCreateSubLineItem</p>

CountryOfOrigin

The country where product originates or is deemed to have originated.

note				
level	OrderCreateProperties OrderCreateDetails			
children	Name CountryCode A code indicating a country. Use the codelist from ISO 3166-1:1997 Codes for the representation of names of countries and their subdivisions – Part 1: Country Codes.	Type string	Use M	Max 1
parent(s)	OrderCreateLineItem OrderCreateProperties OrderCreateSubLineItem			

CreditCardInformation

A collection of elements defining the details of a credit card.

note				
level	OrderCreateProperties OrderCreateDetails			
children	Name CreditCardNumber The number identifying the credit card account. CardHolderName The name of the party to whom the credit card is registered. CreditCardType The type of credit card as generally identified by financial institutions. CreditCardExpirationDate The date upon which a credit card expires and is no longer valid. Format is CCYY-MM-DD where "CC" represents the century, "YY" the year, "MM" the month and "DD" the day. CardAuthorizationCode The authorization number assigned to a transaction against a credit card. CardReferenceNumber A customer reference number which is used to enable transmission of customer specific information with the card.	Type integer string string date string string	Use M O O O O O	Max 1 1 1 1 1
parent(s)	OrderCreateLineItem OrderCreateProperties OrderCreateSubLineItem			

Deferred

The terms for a deferred payment in relation to a transaction.

note				
level	OrderCreateProperties OrderCreateDetails			
children	Name	Type	Use	Max
	DeferredAmount The monetary amount that is deferred for payment based upon terms in an invoice, contract or agreement.		O	1
	DeferredDueDate The date upon which a deferred payment is due. Format is CCYY-MM-DD where "CC" represents the century, "YY" the year, "MM" the month and "DD" the day.	date	O	1
	PercentDeferredPayable The amount due that is deferred for payment expressed as a percentage.	decimal	O	1
	Description A free-form textual explanation or clarification.	string	O	1
parent(s)	PaymentTerms			

DeferredAmount

The monetary amount that is deferred for payment based upon terms in an invoice, contract or agreement.

note				
level	OrderCreateProperties OrderCreateDetails			
children	Name	Type	Use	Max
	MonetaryAmount The currency value of a transaction or item.	decimal	M	1
	CurrencyCode A code indicating the currency in which the monetary amount is specified. Use the codelist from ISO 4217:2001 Codes for the representation of currencies and funds.	string	O	1
parent(s)	Deferred			

DiscountAmount

The monetary amount of a discount based upon payment terms.

note				
level	OrderCreateProperties OrderCreateDetails			
children	Name	Type	Use	Max
	MonetaryAmount The currency value of a transaction or item.	decimal	M	1
	CurrencyCode A code indicating the currency in which the monetary amount is specified. Use the codelist from ISO 4217:2001 Codes for the representation of currencies and funds.	string	O	1
parent(s)	Discounts			

Discounts

The monetary amount allowed or applied as a credit against a transaction or balance.

note				
level	OrderCreateProperties OrderCreateDetails			
children	<p>Name</p> <p>DaysDue The number of days from the payment terms basis date before a discount expires.</p> <p>DiscountsDueDate The date upon which a discount expires. Format is CCYY-MM-DD where "CC" represents the century, "YY" the year, "MM" the month and "DD" the day.</p> <p>PercentDiscount A discount to be applied to the transaction expressed as a percentage.</p> <p>DiscountAmount The monetary amount of a discount based upon payment terms.</p> <p>Description A free-form textual explanation or clarification.</p>	<p>Type</p> <p>integer</p> <p>date</p> <p>decimal</p> <p>string</p>	<p>Use</p> <p>O</p> <p>O</p> <p>O</p> <p>O</p>	<p>Max</p> <p>1</p> <p>1</p> <p>1</p> <p>1</p>
parent(s)	PaymentTerms			

EffectiveDates

The period of time (or range) where the information is valid or guaranteed.

note				
level	OrderCreateProperties OrderCreateDetails			
children	<p>Name</p> <p>FromDate The date upon which a time period begins. Format is CCYY-MM-DD where "CC" represents the century, "YY" the year, "MM" the month and "DD" the day.</p> <p>ToDate The date upon which a time period ends. Format is CCYY-MM-DD where "CC" represents the century, "YY" the year, "MM" the month and "DD" the day.</p>	<p>Type</p> <p>date</p> <p>date</p>	<p>Use</p> <p>M</p> <p>M</p>	<p>Max</p> <p>1</p> <p>1</p>
parent(s)	TaxInformation			

GeographicalInformation

A collection of elements defining a geographical location.

note	• If any one of Section, Township, or Range is given then the other two are required.			
level	OrderCreateProperties OrderCreateDetails			
children	Name	Type	Use	Max
	FieldName	string	O	1
	The name of the oil field.			
	Section	string	O	1
	A part of Section/Township/Range location identifier scheme.			
	Township	string	O	1
	A part of Section/Township/Range location identifier scheme.			
	Range	string	O	1
A part of Section/Township/Range location identifier scheme.				
Region	string	O	1	
The name of a geographic region.				
Block		O	1	
A collection of elements defining the details of a block, which identifies a location.				
GPSCoordinates		O	1	
A collection of elements containing latitude and longitude data for a specific location.				
parent(s)	JobLocationInformation Location			

GPSCoordinates

A collection of elements containing latitude and longitude data for a specific location.

note				
level	OrderCreateProperties OrderCreateDetails			
children	Name	Type	Use	Max
	Latitude	string	M	1
	The specified latitude of a location.			
children	Longitude	string	M	1
	The specified longitude of a location.			
parent(s)	GeographicalInformation			

HazardousMaterialClassCode

A code indicating the kind of hazard for a material.

note				
level	OrderCreateProperties OrderCreateDetails			
parent(s)	HazardousMaterials			
attributes	Name	Type	Use	Fixed
	hazardousMaterialIndicator	string	M	
A code which qualifies the Hazardous Material Class Code.				

HazardousMaterials

A collection of elements conveying hazardous goods information related to a product.

note	• If HazardousMaterials is used, then at least one of SpecialHandlingCode or HazardousMaterialDescription is required.			
level	OrderCreateProperties OrderCreateDetails			
children	Name	Type	Use	Max
	SpecialHandlingCode	string	O	1
	A code identifying any special transportation handling instructions			
	HazardousMaterialDescription	string	O	1
	A free-form textual explanation of information related to a hazardous shipment.			
	HazardousMaterialClassCode	string	O	U
	A code indicating the kind of hazard for a material.			
parent(s)	TransportInformation			

JobLocationIdentifier

A unique identifier referencing the job location.

note				
level	OrderCreateProperties OrderCreateDetails			
parent(s)	JobLocationInformation			
attributes	Name	Type	Use	Fixed
	jobLocationIdentifierIndicator	string	O	
	A code to define what type of location the identifier is referencing.			
	ChemicalPlant			
	Coal-Degas			
	CogenerationPlant			
	Construction			
	Dock			
	GasPlant			
	IndustrialServiceMiscellaneous			
	MilitaryGovernment			
	PaperMill			
	PetroleumPlant			
	Pipeline			
	Refinery			
	Rig			
	UtilityPlant			
	Other			

	OrderCreateSubLineItem
--	--

LinItemIdentifier

The unique identifier for a product or service making up the line item.

note				
level	OrderCreateDetails			
parent(s)	LinItemInformation			
attributes	<p>Name</p> <p>identifierIndicator</p> <p>A code to indicate the origin of the identifier.</p> <p>AssignedByBuyer</p> <p>AssignedByManufacturer</p> <p>AssignedBySeller</p> <p>CatalogueNumber</p> <p>UPCNumber</p> <p>Other</p>	Type	Use	Fixed
		string	M	

LinItemInformation

A collection of elements detailing identifying information about a line item.

note				
level	OrderCreateDetails			
children	<p>Name</p> <p>LinItemIdentifier</p> <p>The unique identifier for a product or service making up the line item.</p> <p>LinItemName</p> <p>The name of the product or service in the line item.</p> <p>LinItemDescription</p> <p>A free-form textual description of the line item.</p> <p>ManufacturerIdentifier</p> <p>A unique identifier for a manufacturer.</p>	Type	Use	Max
		string	O	U
		string	O	1
		string	O	1
		string	O	1
parent(s)	OrderCreateLinItem OrderCreateSubLinItem			

LinItemTotal

The net total monetary amount for the line item.

note				
level	OrderCreateDetails			
children	<p>Name</p> <p>MonetaryAmount</p> <p>The currency value of a transaction or item.</p> <p>CurrencyCode</p> <p>A code indicating the currency in which the monetary amount is specified.</p> <p>Use the codelist from ISO 4217:2001 Codes for the representation of currencies and funds.</p>	Type	Use	Max
		decimal	M	1
		string	O	1
parent(s)	OrderCreateLinItem OrderCreateSubLinItem			

Location

A collection of elements giving details about a location.

note				
level	OrderCreateProperties OrderCreateDetails			
children	Name	Type	Use	Max
	LocationIdentifier	string	O	1
	A unique identifier for a physical location.			
	LocationName	string	O	1
	The name of the location being referenced.			
	AddressInformation		O	1
	A collection of elements defining the details of an address.			
	GeographicalInformation		O	1
	A collection of elements defining a geographical location.			
	LocationDescription	string	O	1
	Free-form textual description of the location.			
parent(s)	TransportInformation			
attributes	Name	Type	Use	Fixed
	locationIndicator	string	O	
	A code to identify what kind of location is being referenced.			
	FreightEqualizationPoint			
	OnVessel-FOBPoint			
	AssignedBySeller			
	Origin-AfterLoadingOnEquipment			
	Origin-ShippingPoint			
	Plant			
	ShippingDestination			
	Warehouse			
Other				

MeasurementRange

A collection of elements providing a minimum and maximum measurement to create a range.

note				
level	OrderCreateProperties OrderCreateDetails			
children	Name	Type	Use	Max
	MinimumMeasurement	decimal	M	1
	The smallest measurement in a given range.			
	MaximumMeasurement	decimal	M	1
	The largest measurement in a given range.			
parent(s)	PriceBasis			

OrderQuantity

The number of units of an item or service ordered.

note				
level	OrderCreateDetails OrderResponse OrderResponseDetails OrderChangeDetails			
children	Name Quantity A numeric count of measure. UnitOfMeasureCode A code identifying the units in which measurement is expressed. Use values from the DE 355 code list contained in ASC X12 release 3030.	Type decimal string	Use M M	Max 1 1
parent(s)	OrderChangeLineItem OrderChangeSubLineItem OrderCreateLineItem OrderCreateSubLineItem OrderResponseLineItem OrderResponseSubLineItem			

PartnerIdentifier

A unique identifier indicating a particular partner or organization.

note				
level	OrderCreateProperties OrderCreateDetails			
parent(s)	PartnerInformation			
attributes	Name partnerIdentifierIndicator A code to identify the origin of the Partner Identifier. AssignedByBuyer AssignedBySeller DUNSNNumber DUNS+4Number Other	Type string	Use M	Fixed

PartnerInformation

A collection of elements detailing partner information.

note				
level	OrderCreateProperties OrderCreateDetails			
children	<p>Name</p> <p>PartnerIdentifier</p> <p>A unique identifier indicating a particular partner or organization.</p> <p>PartnerName</p> <p>The name of the organization being referenced in Partner Information.</p> <p>AddressInformation</p> <p>A collection of elements defining the details of an address.</p> <p>ContactInformation</p> <p>A collection of elements defining details of communication for a contact person.</p> <p>TaxInformation</p> <p>A collection of elements detailing tax information about a partner.</p> <p>URL</p> <p>A Uniform Resource Locator indicating an internet address.</p>	<p>Type</p> <p>string</p> <p>string</p> <p>string</p> <p>string</p> <p>string</p> <p>string</p> <p>string</p>	<p>Use</p> <p>M</p> <p>O</p> <p>O</p> <p>O</p> <p>O</p> <p>O</p> <p>O</p>	<p>Max</p> <p>U</p> <p>1</p> <p>1</p> <p>U</p> <p>1</p> <p>1</p>
parent(s)	OrderCreateLineItem OrderCreateProperties OrderCreateSubLineItem TransportInformation			
attributes	<p>Name</p> <p>partnerRoleIndicator</p> <p>A code to indicate the role in this transaction of the partner being referenced.</p> <p>BillAndShipTo</p> <p>BillTo</p> <p>Carrier</p> <p>CommissionPayee</p> <p>FinalRecipient</p> <p>Manufacturer</p> <p>Marketplace</p> <p>MaterialIssuer</p> <p>OnsiteContractingCompany</p> <p>OperatingCompany</p> <p>Payer</p> <p>PrimaryContractor</p> <p>RemitTo</p> <p>Seller</p> <p>ShipFromParty</p> <p>ShipToParty</p> <p>SoldTo</p> <p>ThirdParty</p> <p>Vendor</p> <p>Warehouse</p> <p>Other</p>	<p>Type</p> <p>string</p>	<p>Use</p> <p>M</p>	<p>Fixed</p>

PaymentTerms

A collection of elements detailing payment terms information.

note	<ul style="list-style-type: none"> • If either one of PercentDiscount or DiscountAmount is used, then at least one of DiscountsDueDate or DaysDue is required. • If DeferredDueDate is used, then at least one of DeferredAmountDue or PercentOfInvoicePayable is required. 			
level	OrderCreateProperties OrderCreateDetails			
children	<p>Name</p> <p>PaymentTermsOfSale</p> <p>The terms on which payment is calculated for the transaction.</p> <p>Description</p> <p>A free-form textual explanation or clarification.</p> <p>PaymentTermsBasisDateCode</p> <p>A code identifying the beginning of the terms period.</p> <p>DeliveryDate</p> <p>InvoiceDate</p> <p>InvoiceReceiptDate</p> <p>Other</p> <p>PaymentTermsBasisDate</p> <p>The date from which payment terms or discounts are calculated or based.</p> <p>Format is CCYY-MM-DD where "CC" represents the century, "YY" the year, "MM" the month and "DD" the day.</p> <p>TermsNetDays</p> <p>The number of days until the total invoice amount is due (discount not applicable).</p> <p>PercentOfInvoicePayable</p> <p>The amount of an invoice payable expressed as a percentage.</p> <p>Discounts</p> <p>The monetary amount allowed or applied as a credit against a transaction or balance.</p> <p>Deferred</p> <p>The terms for a deferred payment in relation to a transaction.</p> <p>Penalty</p> <p>A percentage used to calculate the penalty on any balance unpaid by the due date.</p>	Type	Use	Max
		string	O	1
		string	O	1
		string	O	1
		date	O	1
		integer	O	1
		decimal	O	1
			O	1
			O	1
		string	O	1
parent(s)	OrderCreateLineItem OrderCreateProperties OrderCreateSubLineItem			

PostalCountry

The country code indicating the country to which mail should be delivered.

note				
level	OrderCreateProperties OrderCreateDetails			
children	<p>Name</p> <p>CountryCode</p> <p>A code indicating a country.</p> <p>Use the codelist from ISO 3166-1:1997 Codes for the representation of names of countries and their subdivisions – Part 1: Country Codes.</p>	Type	Use	Max
		string	M	1

parent(s)	AddressInformation
-----------	------------------------------------

PriceBasis

A structure allowing for a price to be based on more than just a single unit of measure.

note				
level	OrderCreateDetails			
children	Name	Type	Use	Max
	Measurement	decimal	O	1
	A numeric value for technical or attribute data.			
	MeasurementRange		O	1
	A collection of elements providing a minimum and maximum measurement to create a range.			
	UnitOfMeasureCode	string	M	1
	A code identifying the units in which measurement is expressed.			
	Use values from the DE 355 code list contained in ASC X12 release 3030.			
	BasisDescription	string	O	1
	Free-form textual description of the basis.			
parent(s)	Pricing			

Pricing

A collection of elements detailing price information.

note				
level	OrderCreateDetails			
children	Name	Type	Use	Max
	UnitPrice		M	1
	The unit price of the product or service being sold.			
	PriceBasis		O	U
	A structure allowing for a price to be based on more than just a single unit of measure.			
parent(s)	OrderCreateLineItem OrderCreateSubLineItem			

PrimaryCurrency

The currency code indicating the currency to be used for the transaction.

note				
level	OrderCreateProperties			
children	Name	Type	Use	Max
	CurrencyCode	string	M	1
	A code indicating the currency in which the monetary amount is specified.			
	Use the codelist from ISO 4217:2001 Codes for the representation of currencies and funds.			
parent(s)	OrderCreateProperties			

ReferenceInformation

A collection of elements detailing references to information that reside outside of the current transaction message.

note	• It is recommended that ReferenceInformation be used at either the Property or Detail level, but not both.			
level	OrderCreateProperties OrderCreateDetails			
children	Name	Type	Use	Max
	ReferenceNumber	string	M	1
	A number or identifier that is used to reference documents or information not included within a particular message. The referenceInformationIndicator attribute qualifies what this number references			
	Description	string	O	1
	A free-form textual explanation or clarification.			
parent(s)	OrderCreateLineItem OrderCreateProperties OrderCreateSubLineItem			
attributes	Name	Type	Use	Fixed
	referenceInformationIndicator	string	M	
	A code to identify what type of information is being referenced.			
	AFENumber			
	BatchNumber			
	BillOfLading			
	Certification			
	CertifiedInspectionTestResults			
	ConfigurationNumber			
	ContractNumber			
	CostAllocationReference			
	CostCenter			
	CustomerAccountingReference			
	CustomerReferenceNumber			
	DeliveryTicketNumber			
	DivisionIdentifier			
	EngineeringChangeOrderNumber			
	JobNumber			
	LetterOfCreditNumber			
	LocationNumber			
	MaterialSafetyDataSheet			
	OperatorGeneralLedgerCode			
	OriginalInvoiceNumber			
	PriceAreaNumber			
	ProjectNumber			
	ProposalNumber			
	QuoteNumber			
	RequestForQuotationNumber			
	TemplateName			
	Other			

SecondCurrency

The currency code indicating a second currency, such as for European countries using the Euro and a local currency.

note				
level	OrderCreateProperties			
children	<p>Name</p> <p>CurrencyCode</p> <p>A code indicating the currency in which the monetary amount is specified.</p> <p>Use the codelist from ISO 4217:2001 Codes for the representation of currencies and funds.</p>	Type	Use	Max
		string	M	1
parent(s)	OrderCreateProperties			

ServiceDateTime

The actual and/or schedule dates for a service.

note	<p>Format is CCYY-MM-DDThh:mm:ss where "CC" represents the century, "YY" the year, "MM" the month and "DD" the day. The letter "T" is the date/time separator and "hh", "mm", "ss" represent hour, minute and second respectively.</p> <p>The CCYY field must have at least four digits, the MM, DD, SS, hh, mm and ss fields exactly two digits each. Leading zeroes must be used if the field would otherwise have too few digits.</p> <p>If no time is to be given then use zeroes in the hh, mm and ss fields.</p> <p>This representation may be immediately followed by a "Z" to indicate Coordinated Universal Time (UTC) or, to indicate the time zone, i.e. the difference between the local time and Coordinated Universal Time, immediately followed by a sign, + or -, followed by the difference from UTC represented as hh:mm (note: the minutes part is required). For example, to indicate 1:20 pm on May the 31st, 1999 for Eastern Standard Time which is 5 hours behind Coordinated Universal Time (UTC), one would write: 1999-05-31T13:20:00-05:00.</p>			
level	OrderCreateProperties OrderCreateDetails			
parent(s)	OrderCreateLineItem OrderCreateProperties OrderCreateSubLineItem			
attributes	<p>Name</p> <p>dateTypeIndicator</p> <p>A code to identify which date being given.</p> <p>ArriveLocationDate</p> <p>InvoiceDueDate</p> <p>InvoicePeriodStartDate</p> <p>LeaveLocationDate</p> <p>PromisedForDelivery</p> <p>PromisedForShipment</p> <p>RequestedForDelivery</p> <p>RequestedForShipment</p> <p>ServicePeriodEnd</p> <p>ServicePeriodStart</p> <p>ShipDate</p> <p>Other</p>	Type	Use	Fixed
		string	M	

SpecialInstructions

A free-form textual description of special requirements.

note				
level	OrderCreateProperties OrderCreateDetails			
parent(s)	OrderCreateLineItem OrderCreateProperties OrderCreateSubLineItem			
attributes	<p>Name</p> <p>instructionIndicator</p> <p>A code to identify the type of instruction being given.</p> <p>CarrierInstructions</p> <p>ConsigneeInstructions</p> <p>DriverInstructions</p> <p>EmptyReturnInstructions</p> <p>InspectionInstructions</p> <p>RoutingInstructions</p> <p>ShipperInstructions</p> <p>ShortLeadTime</p> <p>Tolerances</p> <p>Other</p>	Type	Use	Fixed
		string	0	

Tax

A collection of elements detailing information about tax applied to a transaction.

note	<ul style="list-style-type: none"> It is recommended that Tax be used at the Detail level to support tax exemptions. However, many systems cannot provide detail-level Tax information at this time, therefore, Tax is not mandatory at the detail level. 			
level	OrderCreateDetails			
children	<p>Name</p> <p>TaxTypeCode A code indicating the kind of tax being applied.</p> <p>CitySalesTax</p> <p>CountyParishSalesTax</p> <p>CountyTax</p> <p>FederalExciseTax</p> <p>GoodsAndServicesTax</p> <p>GrossReceiptsTax</p> <p>LocalTax</p> <p>MetropolitanTransitTax</p> <p>StateAndLocalSalesTax</p> <p>StateProvincialTax</p> <p>StateSalesTax</p> <p>ValueAddedTax</p> <p>WellServiceTax</p> <p>Other</p> <p>MixedRateIndicator A mixed rate VAT tax indicator. This is used for European tax purposes.</p> <p>TaxIdentifierNumber A unique number or code issued to an organization by a governmental or regulatory body identifying that entity for tax purposes.</p> <p>TaxExemptCode A code identifying exemption status from sales and use tax.</p> <p>DirectPay</p> <p>Exempt</p> <p>NonExempt</p> <p>Other</p> <p>TaxLocation The physical or deemed location at which tax is calculated based upon jurisdiction by a governmental or regulatory body.</p> <p>TaxRate The percentage or monetary amount charged on a transaction.</p> <p>TaxBasisAmount The monetary amount which is subject to tax.</p> <p>TaxAmount The monetary amount of the tax.</p> <p>TaxReference A free-form textual explanation or clarification.</p>	Type	Use	Max
		string	M	1
		string	O	1
		string	O	1
		string	O	1
			O	1
		decimal	O	1
			O	1
			O	1
		string	O	1
parent(s)	OrderCreateLineItem OrderCreateSubLineItem			

TaxAmount

The monetary amount of the tax.

note				
level	OrderCreateDetails			
children	Name	Type	Use	Max
	MonetaryAmount	decimal	M	1
	The currency value of a transaction or item.			
	CurrencyCode	string	O	1
	A code indicating the currency in which the monetary amount is specified.			
	Use the codelist from ISO 4217:2001 Codes for the representation of currencies and funds.			
parent(s)	Tax			

TaxBasisAmount

The monetary amount which is subject to tax.

note				
level	OrderCreateDetails			
children	Name	Type	Use	Max
	MonetaryAmount	decimal	M	1
	The currency value of a transaction or item.			
	CurrencyCode	string	O	1
	A code indicating the currency in which the monetary amount is specified.			
	Use the codelist from ISO 4217:2001 Codes for the representation of currencies and funds.			
parent(s)	Tax			

TaxInformation

A collection of elements detailing tax information about a partner.

note				
level	OrderCreateProperties OrderCreateDetails			
children	Name	Type	Use	Max
	TaxIdentifierNumber	string	O	1
	A unique number or code issued to an organization by a governmental or regulatory body identifying that entity for tax purposes.			
	Jurisdiction	string	O	1
	The authority exercised by a nation, a judicial body, or a legislative body over persons, places, and property. Jurisdiction may apply to the territory over which a nation has control, including the land area, the adjacent sea, and the airspace above. It may also refer to the authority of an international body to make decisions binding on national entities.			
TaxCertificateType	string	O	1	
The category of tax certificate for which an identifying number is issued.				
TaxCertificateNumber	string	O	1	
The identifying number for a tax certificate such as tax exemption, sales and use tax certificate or other such document.				
parent(s)	PartnerInformation			

TaxLocation

The physical or deemed location at which tax is calculated based upon jurisdiction by a governmental or regulatory body.

note				
level	OrderCreateDetails			
children	Name	Type	Use	Max
	LocationIdentifier	string	O	1
	A unique identifier for a physical location.			
	LocationName	string	O	1
	The name of the location being referenced.			
children	LocationDescription	string	O	1
	Free-form textual description of the location.			
	AddressInformation		O	1
	A collection of elements defining the details of an address.			
parent(s)	Tax			

Telephone

A collection of elements detailing information about a telephone number.

note				
level	OrderCreateProperties OrderCreateDetails			
children	Name	Type	Use	Max
	PhoneNumber	string	M	1
	A numerical sequence to reach a telephone attached to a communication network.			
	PhoneNumberExtension	string	O	1
	An extension number that is needed to further identify the phone number.			
children	TelecomCountryCode	string	O	1
	The dialing code from another country to access the telephone network in another country.			
	TelecomAreaCode	string	O	1
	The area code within a country or jurisdiction, if needed, to access local telephones within the country.			
parent(s)	ContactInformation			
attributes	Name	Type	Use	Fixed
	telephoneIndicator	string	O	
	A code to indicate the type of phone number being given.			
	Fax			
	Mobile			
	Pager			
	Voice			
Other				

TotalAmount

The total monetary amount of an order.

note	
level	OrderCreateSummary

children	Name	Type	Use	Max
	MonetaryAmount The currency value of a transaction or item.	decimal	M	1
	CurrencyCode A code indicating the currency in which the monetary amount is specified. Use the codelist from ISO 4217:2001 Codes for the representation of currencies and funds.	string	O	1
	parent(s)	OrderCreateSummary		

TransportInformation

A collection of elements detailing how product is transported.

note	• If TransportInformation is used, then at least one of TransportMethodCode, Routing, or ServiceLevelCode is required.			
level	OrderCreateProperties OrderCreateDetails			
children	Name	Type	Use	Max
	ShipmentMethodOfPayment A code indicating payment terms for transportation charges. Collect Collect-FreightCreditedBackToCustomer CustomerPickupBackhaul Pickup PrepaidBySeller Prepaid-ChargedToCustomer ServiceFreight-NoCharge ThirdPartyPay Other	string	M	1
	RoutingSequenceCode A code indicating the relationship of a carrier to a specific shipment movement. OriginCarrier-AirMotorOcean OriginDeliveryCarrier-AnyMode Other	string	O	1
	TransportMethodCode A code indicating the mode of transportation used to move product. Air AirExpress Barge BestWay-ShippersOption Boat CustomerPickup ExpeditedTruck Motor-CommonCarrier Ocean ParcelPost Rail SupplierTruck Truck Vessel Other	string	O	1
	PartnerInformation A collection of elements detailing partner information.		O	U
	Location A collection of elements giving details about a location.		O	U

	<p>ShipmentTermsCode A code indicating the terms under which a product is shipped, such as Freight Prepaid, FOB or similar.</p> <p>Routing A free-form description of the shipping route to be provided for transportation of product.</p> <p>ServiceLevelCode A code indicating the level of service required.</p> <p>HazardousMaterials A collection of elements conveying hazardous goods information related to a product.</p> <p>CarrierEquipmentCode A code indicating the kind of equipment parent(s) the carrier.</p> <p>TransportName The identifier of specific vessel, truck, railcar, etc.</p>	<p>string</p> <p>string</p> <p>string</p> <p></p> <p>string</p> <p>string</p>	<p>O</p> <p>O</p> <p>O</p> <p>O</p> <p>O</p> <p>O</p>	<p>1</p> <p>1</p> <p>1</p> <p>1</p> <p>1</p> <p>1</p>
parent(s)	<p>OrderCreateLineItem</p> <p>OrderCreateProperties</p> <p>OrderCreateSubLineItem</p>			

UnitPrice

A collection of elements detailing how product is transported.

note				
level	OrderCreateDetails			
children	<p>Name</p> <p>MonetaryAmount The currency value of a transaction or item.</p> <p>UnitOfMeasureCode A code identifying the units in which measurement is expressed. Use values from the DE 355 code list contained in ASC X12 release 3030.</p> <p>CurrencyCode A code indicating the currency in which the monetary amount is specified. Use the codelist from ISO 4217:2001 Codes for the representation of currencies and funds.</p>	<p>Type</p> <p>decimal</p> <p>string</p> <p>string</p>	<p>Use</p> <p>M</p> <p>M</p> <p>O</p>	<p>Max</p> <p>1</p> <p>1</p> <p>1</p>
parent(s)	Pricing			

WellIdentifier

A unique identifier referencing a well, such as an API or UWI number.

note				
level	<p>OrderCreateProperties</p> <p>OrderCreateDetails</p>			
parent(s)	WellInformation			
attributes	<p>Name</p> <p>wellIdentifierIndicator A code to indicate the origin of the Well Identifier.</p> <p>APINumber</p> <p>CustomerNumber</p> <p>UWInumber</p> <p>Other</p>	<p>Type</p> <p>string</p>	<p>Use</p> <p>O</p>	<p>Fixed</p>

WellInformation

A collection of elements detailing information about a well.

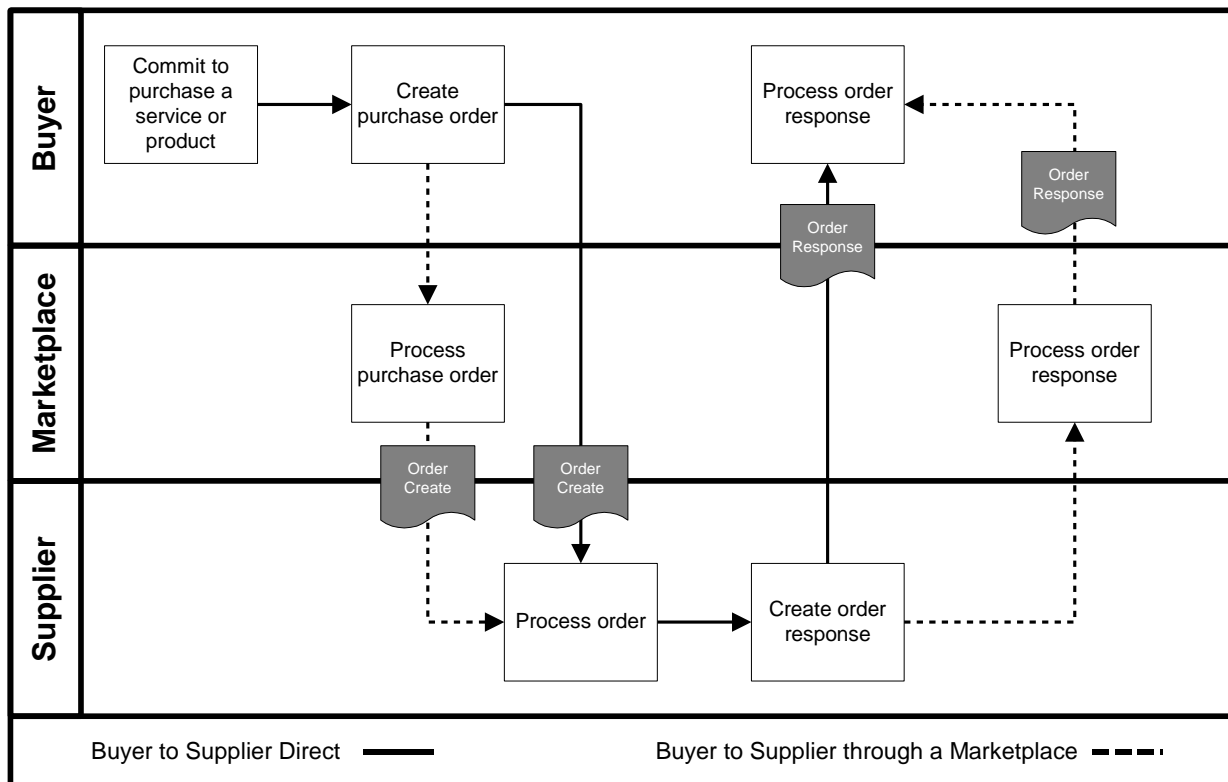
note				
level	OrderCreateProperties OrderCreateDetails			
children	Name	Type	Use	Max
	WellIdentifier A unique identifier referencing a well, such as an API or UWI number.	string	M	U
	WellName The customer name of a well.	string	O	1
	WellType A code indicating the function of the well.	string	O	1
	Brine			
	DirectionalGas			
	DirectionalNonWell			
	DirectionalOil			
	DisposalWell			
	Environmental			
	Gas			
	HorizontalGas			
	HorizontalOil			
	IndustrialDisposal			
	IndustrialNonWell			
	Injection			
	NonWell			
	Oil			
	Relief			
	Storage			
	Sulfur			
	Thermal			
	Uranium			
	Water			
	Other			
	WellCategory A code indicating the category of a well.	string	O	1
	Abandoned			
DevBelow3000				
Development				
ExistingWell				
NonWell				
ReacidizeWell				
Recompletion				
RefractedWell				
Wildcat				
Workover				
Other				

parent(s)	JobLocationInformation
-----------	--

5.0 Order Response

5.1 Business Process Diagram

Below is the Business Process Diagram for the Order Response transaction, using either a B2B or Marketplace model. Solid lines indicate transactions between a Buyer and Seller directly. Dashed lines illustrate the transactions between the Buyer and Seller via a Marketplace. These are not the only two methods in which the process can take place, however, they represent the two primary processes. Third parties other than a Marketplace may be involved if necessary.



B2B Model - A Buyer or buying organization makes a commitment to purchase a service or complex product. A purchase order is created and sent to the Seller. The Seller processes the order and sends a response to the Buyer either accepting or denying the terms of the order.

Marketplace Model - A Buyer or buying organization makes a commitment to purchase a service or complex product. A purchase order is created on a Marketplace and sent to the Seller. The Seller processes the order and sends a response to the Buyer through the Marketplace either accepting or denying the terms of the order.

The Order Response document is used as a response from a Buyer's request for an order. The response allows the Seller to accept, change, or deny parts or all of the order.

5.2 Legend to Tables

The following tables detail the elements and attributes that make up the Order Response. The legend below provides guidance to understanding the element tables. The legend is an example only and is not part of the document standard data.

Telephone ¹ ²

A collection of elements detailing information about a telephone number.

³ note																																					
level	OrderCreateProperties ⁴ OrderCreateDetails																																				
children	<table border="1"> <thead> <tr> <th>Name</th> <th>Type</th> <th>Use</th> <th>Max</th> </tr> </thead> <tbody> <tr> <td>PhoneNumber ⁵ ⁶ ⁷</td> <td>string ⁸</td> <td>M</td> <td>1</td> </tr> <tr> <td>A numerical sequence to reach a telephone attached to a communication network.</td> <td></td> <td></td> <td></td> </tr> <tr> <td>PhoneNumberExtension</td> <td>string</td> <td>O</td> <td>1</td> </tr> <tr> <td>An extension number that is needed to further identify the phone number.</td> <td></td> <td></td> <td></td> </tr> <tr> <td>TelecomCountryCode</td> <td>string</td> <td>O</td> <td>1</td> </tr> <tr> <td>The dialing code from another country to access the telephone network in another country.</td> <td></td> <td></td> <td></td> </tr> <tr> <td>TelecomAreaCode</td> <td>string</td> <td>O</td> <td>1</td> </tr> <tr> <td>The area code within a country or jurisdiction, if needed, to access local telephones within the country.</td> <td></td> <td></td> <td></td> </tr> </tbody> </table>	Name	Type	Use	Max	PhoneNumber ⁵ ⁶ ⁷	string ⁸	M	1	A numerical sequence to reach a telephone attached to a communication network.				PhoneNumberExtension	string	O	1	An extension number that is needed to further identify the phone number.				TelecomCountryCode	string	O	1	The dialing code from another country to access the telephone network in another country.				TelecomAreaCode	string	O	1	The area code within a country or jurisdiction, if needed, to access local telephones within the country.			
Name	Type	Use	Max																																		
PhoneNumber ⁵ ⁶ ⁷	string ⁸	M	1																																		
A numerical sequence to reach a telephone attached to a communication network.																																					
PhoneNumberExtension	string	O	1																																		
An extension number that is needed to further identify the phone number.																																					
TelecomCountryCode	string	O	1																																		
The dialing code from another country to access the telephone network in another country.																																					
TelecomAreaCode	string	O	1																																		
The area code within a country or jurisdiction, if needed, to access local telephones within the country.																																					
parent(s)	ContactInformation ⁹																																				
attributes	<table border="1"> <thead> <tr> <th>Name</th> <th>Type</th> <th>Use</th> <th>Fixed</th> </tr> </thead> <tbody> <tr> <td>telephoneIndicator ¹⁰ ¹¹ ¹⁴ ¹²</td> <td>string ¹³</td> <td>O</td> <td></td> </tr> <tr> <td>A code to indicate the type of phone number being given.</td> <td></td> <td></td> <td></td> </tr> <tr> <td>Fax</td> <td></td> <td></td> <td></td> </tr> <tr> <td>Mobile</td> <td></td> <td></td> <td></td> </tr> <tr> <td>Pager</td> <td></td> <td></td> <td></td> </tr> <tr> <td>Voice</td> <td></td> <td></td> <td></td> </tr> <tr> <td>Other</td> <td></td> <td></td> <td></td> </tr> </tbody> </table>	Name	Type	Use	Fixed	telephoneIndicator ¹⁰ ¹¹ ¹⁴ ¹²	string ¹³	O		A code to indicate the type of phone number being given.				Fax				Mobile				Pager				Voice				Other							
Name	Type	Use	Fixed																																		
telephoneIndicator ¹⁰ ¹¹ ¹⁴ ¹²	string ¹³	O																																			
A code to indicate the type of phone number being given.																																					
Fax																																					
Mobile																																					
Pager																																					
Voice																																					
Other																																					

Legend	
1	The name of the element.
2	The definition of the element.
3	Contains any business rules or comments about the element
4	Identifies whether or not the element is under the Property, Detail, or Summary level of the document
5	Contains the name of the child elements and their definitions. Those elements in blue are links to the element specification. Only those elements that contain children or attributes are hyperlinked.
6	Indicates the data type of the element.
7	Indicates whether the element is mandatory (M) or optional (O).
8	Indicates whether the element can have a maximum of one occurrence (1) or unbounded multiple occurrences (U)
9	Indicates the parent element of the element.
10	Contains the name of any attributes and their definitions.
11	Indicates the data type of the attribute. If the type is blank, then the element contains children rather than data.
12	Indicates whether the attribute is mandatory (M) or optional (O).

13	Provides a fixed value for the attribute.
14	The shaded areas provide either code list values, rules, or notes about the child element or attribute.

The document, its properties, details, line item, sub-line item, and summary elements are presented first. They are followed by an alphabetical listing of those elements used in the document and have children or attributes.

5.3 Document Detail

OrderResponse

The root element of the Order Response message. It is used to acknowledge a previously placed order or change order.

note		Type	Use	Max
children	Name OrderResponseProperties A collection of elements defining the response "meta-data" or "common data". OrderResponseDetails A collection of elements defining the details of the Order Response message. OrderResponseSummary A collection of elements detailing the totals of the response.		M	1
attributes	Name transactionPurposeIndicator A code indicating the purpose of the transaction. Add Cancellation Change Confirmation Delete Duplicate Original Replace Request Other version A fixed number indicating the version of the PIDX XML Standard on which the transaction is based.	string	M	
		decimal	M	1.0

OrderResponseProperties

A collection of elements defining the response "meta-data" or "common data".

note		Type	Use	Max
children	Name			
	OrderResponseNumber	string	M	1
	A unique identifier for an Order Response message.			
	OrderResponseDate	date	M	1
	The date upon which an acknowledgement was created or deemed to have been issued.			
	Format is CCYY-MM-DD where "CC" represents the century, "YY" the year, "MM" the month and "DD" the day.			
	PartnerInformation		O	U
	A collection of elements detailing partner information.			
	PurchaseOrderInformation		M	1
	A collection of elements containing relevant purchase order information which needs to be referenced within other documentation and/or messages.			
	ChangeOrderInformation		O	1
	A collection of elements which identifies a particular Change Order.			
	AcknowledgementType	string	O	1
	A code identifying the kind of acknowledgement being sent.			
	SpecialInvoicePreference	string	O	1
	A code indicating any special invoice requirements.			
	InvoiceNotRequired			
	Other			
	PrimaryCurrency		O	1
	The currency code indicating the currency to be used for the transaction.			
	SecondCurrency		O	1
	The currency code indicating a second currency, such as for European countries using the Euro and a local currency.			
	LanguageCode	string	O	1
A code indicating the language used for the transaction.				
Use the codelist from ISO 639-2:1998 Codes for the representation of names of languages – Part 2: Alpha-3 Code.				
JobLocationInformation		O	1	
A collection of elements giving details of a job location.				
ServiceDateTime	datetime	O	U	
The actual and/or schedule dates for a service.				
CountryOfOrigin		O	1	
The country where product originates or is deemed to have originated.				
CountryOfFinalDestination		O	1	
The country where product is ultimately delivered or is deemed to have been delivered.				
TransportInformation		O	1	
A code indicating the mode of transportation used to move product.				
PaymentTerms		O	1	
A collection of elements detailing payment terms information.				
CreditCardInformation		O	1	
A collection of elements defining the details of a credit card.				

	<p>SpecialInstructions string O U</p> <p>A free-form textual description of special requirements.</p> <p>ReferenceInformation O U</p> <p>A collection of elements detailing references to information that reside outside of the current transaction message.</p> <p>Attachment O U</p> <p>A collection of elements defining the details of an attachment to the document.</p> <p>Comment string O 1</p> <p>A free-form textual structure for general information or comments.</p>
parent(s)	OrderResponse

OrderResponseDetails

A collection of elements defining the details of the Order Response message.

note				
children	<p>Name Type</p> <p>OrderResponseLineItem Use Max</p> <p>M U</p> <p>A collection of elements defining the details of the line items making up the response.</p>			
parent(s)	OrderResponse			

OrderResponseLineItem

A collection of elements defining the details of the line items making up the response.

note		Type	Use	Max
children	Name			
	PurchaseOrderLineItemNumber	string	M	1
	A sequential individual line identifier within a purchase order document containing product or item information.			
	LineStatusCode	string	M	1
	A code which indicates the whether a line item has been approved, rejected, or is pending.			
	Accept			
	Pending			
	Reject			
	Other			
	LineResponseReasonCode	string	M	1
	A code indicating the response to the line item, such as accepted, rejected, etc.			
	LineItemInformation		M	1
	A collection of elements detailing identifying information about a line item.			
	OrderQuantity		M	1
	The number of units of an item or service ordered.			
	ChangeDescription	string	O	1
	A free-form textual description of changes made.			
	CommodityCode	string	O	U
	A code indicating the categorization of a product or service in accordance with a particular standard.			
	PartnerInformation		O	U
	A collection of elements detailing partner information.			
	JobLocationInformation		O	1
	A collection of elements giving details of a job location.			
	Pricing		O	1
	A collection of elements detailing price information.			
	AllowanceOrCharge		O	U
	A collection of elements defining the details of an allowance or charge to the customer.			
	Tax		O	U
	A collection of elements detailing information about tax applied to a transaction.			
	LineItemTotal		O	1
	The net total monetary amount for the line item.			
	ServiceDateTime	datetime	O	U
	The actual and/or schedule dates for a service.			
	CountryOfOrigin		O	1
	The country where product originates or is deemed to have originated.			
	CountryOfFinalDestination		O	1
	The country where product is ultimately delivered or is deemed to have been delivered.			
	TransportInformation		O	1
	A code indicating the mode of transportation used to move product.			
	PaymentTerms		O	1
	A collection of elements detailing payment terms information.			

	<p>CreditCardInformation O 1</p> <p>A collection of elements defining the details of a credit card.</p> <p>SpecialInstructions string O U</p> <p>A free-form textual description of special requirements.</p> <p>PackagingCharacteristicCode string O U</p> <p>A code indicating the marking, packaging, loading and related characteristics being described.</p> <p>PackageSpecifications</p> <p>ProductMarking</p> <p>SkidPalletType</p> <p>TypeOfPackage</p> <p>Other</p> <p>PackagingCharacteristicDescription string O U</p> <p>Free-form text providing any additional information associated with the Packaging Characteristic Code.</p> <p>ReferenceInformation O U</p> <p>A collection of elements detailing references to information that reside outside of the current transaction message.</p> <p>Attachment O U</p> <p>A collection of elements defining the details of an attachment to the document.</p> <p>Comment string O 1</p> <p>A free-form textual structure for general information or comments.</p> <p>OrderResponseSubLineItem O U</p> <p>A collection of elements defining the details of the sub line items of a response. It is used if a line item needs to be broken down into further detail.</p>
parent(s)	<p>OrderResponseDetails</p>

OrderResponseSubLineItem

A collection of elements defining the details of the sub line items of a response. It is used if a line item needs to be broken down into further detail.

note		Type	Use	Max
children	Name			
	PurchaseOrderSubLineItemNumber	string	M	1
	A sequential individual sub-line identifier within an Order Create document containing product or item information that relates back to a parent line item.			
	LineStatusCode	string	M	1
	A code which indicates the whether a line item has been approved, rejected, or is pending.			
	Accept			
	Pending			
	Reject			
	Other			
	LineResponseReasonCode	string	M	1
	A code indicating the response to the line item, such as accepted, rejected, etc.			
	LineItemInformation		M	1
	A collection of elements detailing identifying information about a line item.			
	OrderQuantity		M	1
	The number of units of an item or service ordered.			
	ChangeDescription	string	O	1
	A free-form textual description of changes made.			
	CommodityCode	string	O	U
	A code indicating the categorization of a product or service in accordance with a particular standard.			
	PartnerInformation		O	U
	A collection of elements detailing partner information.			
	JobLocationInformation		O	1
	A collection of elements giving details of a job location.			
	Pricing		O	1
	A collection of elements detailing price information.			
	AllowanceOrCharge		O	U
	A collection of elements defining the details of an allowance or charge to the customer.			
	Tax		O	U
	A collection of elements detailing information about tax applied to a transaction.			
	LineItemTotal		O	1
	The net total monetary amount for the line item.			
	ServiceDateTime	datetime	O	U
	The actual and/or schedule dates for a service.			
	CountryOfOrigin		O	1
	The country where product originates or is deemed to have originated.			
	CountryOfFinalDestination		O	1
	The country where product is ultimately delivered or is deemed to have been delivered.			
	TransportInformation		O	1
	A code indicating the mode of transportation used to move product.			
	PaymentTerms		O	1

	<p>A collection of elements detailing payment terms information.</p> <p>CreditCardInformation O 1</p> <p>A collection of elements defining the details of a credit card.</p> <p>SpecialInstructions string O U</p> <p>A free-form textual description of special requirements.</p> <p>PackagingCharacteristicCode string O U</p> <p>A code indicating the marking, packaging, loading and related characteristics being described.</p> <p>PackageSpecifications</p> <p>ProductMarking</p> <p>SkidPalletType</p> <p>TypeOfPackage</p> <p>Other</p> <p>PackagingCharacteristicDescription string O U</p> <p>Free-form text providing any additional information associated with the Packaging Characteristic Code.</p> <p>ReferenceInformation O U</p> <p>A collection of elements detailing references to information that reside outside of the current transaction message.</p> <p>Attachment O U</p> <p>A collection of elements defining the details of an attachment to the document.</p> <p>Comment string O 1</p> <p>A free-form textual structure for general information or comments.</p>
parent(s)	OrderResponseLinItem

OrderResponseSummary

A collection of elements detailing the totals of the response.

note				
children	<p>Name</p> <p>TotalLinItems Type integer Use M Max 1</p> <p>The total number of line items contained in a message.</p> <p>TotalAmount O 1</p> <p>The total monetary amount of an order.</p>			
parent(s)	OrderResponse			

AddressInformation

A collection of elements defining the details of an address.

note				
level	OrderResponseProperties OrderResponseDetails			
children	<p>Name</p> <p>POBoxNumber The identity of a physical box within a postal facility to accept and receive mail.</p> <p>BuildingHouseNumber The alphanumeric identifier of a building as a part of an address.</p> <p>StreetName The name of a street as part of an address.</p> <p>AddressLine An occurrence of a generally accepted formatted line of data such that when combined with the entire address structure there is sufficient information for delivery or location purposes.</p> <p>CityName The name of the city or municipality.</p> <p>StateProvince The name of the municipality or town as a location for mailing, siting and other geographic functions.</p> <p>PostalCode The code assigned by local postal authorities to delivery addresses.</p> <p>PostalCountry The country code indicating the country to which mail should be delivered.</p> <p>CountyName The name of the county.</p> <p>LocationIdentifier A unique identifier for a physical location.</p>	<p>Type</p> <p>string</p> <p>string</p> <p>string</p> <p>string</p> <p>string</p> <p>string</p> <p>string</p> <p>string</p> <p>string</p> <p>string</p>	<p>Use</p> <p>O</p> <p>O</p> <p>O</p> <p>O</p> <p>O</p> <p>O</p> <p>O</p> <p>O</p> <p>O</p> <p>O</p>	<p>Max</p> <p>1</p> <p>1</p> <p>1</p> <p>U</p> <p>1</p> <p>1</p> <p>1</p> <p>1</p> <p>1</p>
parent(s)	JobLocationInformation Location PartnerInformation TaxLocation			

AllowanceOrCharge

A collection of elements defining the details of an allowance or charge to the customer.

note	<ul style="list-style-type: none"> If AllowanceOrCharge is used, then at least one of AllowanceOrChargeRate, AllowanceOrChargeTotalAmount, or AllowanceOrChargePercent is required. 			
level	OrderResponseDetails			
children	<p>Name</p> <p>AllowanceOrChargeTotalAmount The total monetary amount for the allowance or charge.</p> <p>AllowanceOrChargeRate The rate per unit of the allowance or charge.</p> <p>AllowanceOrChargePercent The allowance or charge expressed as a percentage.</p> <p>AllowanceOrChargeNumber The identifier assigned by a vendor referencing an allowance, promotion, deal or charge.</p> <p>AllowanceOrChargeTypeCode A code identifying the kind of allowance or charge being described.</p> <p>Freight</p> <p>FuelSurcharge</p> <p>SpecialHandlingService</p> <p>Discount</p> <p>FlatRate</p> <p>EngineeringCharge</p> <p>InvoiceAdjustment</p> <p>InsuranceSurcharge</p> <p>OneTimeLicenseFee</p> <p>Royalties</p> <p>MiscellaneousCharge</p> <p>PostageCharge</p> <p>TrailerRentalCharge</p> <p>TransportationDirectBilling</p> <p>TransportationVendorProvided</p> <p>Other</p> <p>MethodOfHandlingCode A code which describes how a particular allowance or charge should be handled.</p> <p>OffInvoice</p> <p>ChargeToBePaidByCustomer</p> <p>Other</p> <p>AllowanceOrChargeDescription A free form description used to clarify the related allowance and charge data elements and their content.</p> <p>AllowanceOrChargeQuantity The quantity on which the allowance or charge is based if it is different from the purchase order or invoice quantity.</p>	Type	Use	Max
			<input type="radio"/>	1
			<input type="radio"/>	1
		decimal	<input type="radio"/>	1
		string	<input type="radio"/>	1
		string	<input type="radio"/>	1
			<input type="radio"/>	1
		string	<input type="radio"/>	1
			<input type="radio"/>	1
		string	<input type="radio"/>	1
			<input type="radio"/>	1
parent(s)	<p>OrderResponseLineItem</p> <p>OrderResponseSubLineItem</p>			

attributes	Name	Type	Use	Fixed
	allowanceOrChargeIndicator	string	M	
	A code to indicate whether the information relates to an allowance or charge.			
	Allowance			
	Charge			
	Other			

AllowanceOrChargePercent

The allowance or charge expressed as a percentage.

note				
level	OrderResponseDetails			
parent(s)	AllowanceOrCharge			
attributes	Name	Type	Use	Fixed
	percentIndicator	string	O	
	A code indicating on what basis the allowance or charge percent is calculated.			

AllowanceOrChargeQuantity

The quantity on which the allowance or charge is based if it is different from the purchase order or invoice quantity.

note				
level	OrderCreateDetails OrderResponseDetails OrderChangeDetails			
children	Name	Type	Use	Max
	Quantity	decimal	M	1
	A numeric count of measure.			
	UnitOfMeasureCode	string	M	1
	A code identifying the units in which measurement is expressed.			
parent(s)	AllowanceOrCharge			

AllowanceOrChargeRate

The rate per unit of the allowance or charge.

note				
level	OrderResponseDetails			
children	Name	Type	Use	Max
	MonetaryAmount	decimal	M	1
	The currency value of a transaction or item.			
	UnitOfMeasureCode	string	M	1
	A code identifying the units in which measurement is expressed.			
	CurrencyCode	string	O	1
	A code indicating the currency in which the monetary amount is specified. Use the codelist from ISO 4217:2001 Codes for the representation of currencies and funds.			
parent(s)	AllowanceOrCharge			

AllowanceOrChargeTotalAmount

The total monetary amount for the allowance or charge.

note				
level	OrderResponseDetails			
children	Name	Type	Use	Max
	MonetaryAmount	decimal	M	1
	The currency value of a transaction or item.			
	CurrencyCode	string	O	1

	A code indicating the currency in which the monetary amount is specified. Use the codelist from ISO 4217:2001 Codes for the representation of currencies and funds.
parent(s)	AllowanceOrCharge

AlternativeCommunicationMethod

Additional methods of communication, such as an IP Address or Printer ID, in addition to those specifically listed elsewhere in contact or address information.

note																																																									
level	OrderResponseProperties OrderResponseDetails																																																								
parent(s)	ContactInformation																																																								
attributes	<table border="1"> <thead> <tr> <th>Name</th> <th>Type</th> <th>Use</th> <th>Fixed</th> </tr> </thead> <tbody> <tr> <td>alternativeCommunicationMethodIndicator</td> <td>string</td> <td>M</td> <td></td> </tr> <tr> <td colspan="4">A code to indicate the type of alternative communication method.</td> </tr> <tr> <td>AUTOVON</td> <td></td> <td></td> <td></td> </tr> <tr> <td>EDIAccessNumber</td> <td></td> <td></td> <td></td> </tr> <tr> <td>FederalTelecommunicationsSystem</td> <td></td> <td></td> <td></td> </tr> <tr> <td>IPAddress</td> <td></td> <td></td> <td></td> </tr> <tr> <td>PacketSwitching</td> <td></td> <td></td> <td></td> </tr> <tr> <td>PrinterID</td> <td></td> <td></td> <td></td> </tr> <tr> <td>StationCode</td> <td></td> <td></td> <td></td> </tr> <tr> <td>Telemail</td> <td></td> <td></td> <td></td> </tr> <tr> <td>Telex</td> <td></td> <td></td> <td></td> </tr> <tr> <td>TWX</td> <td></td> <td></td> <td></td> </tr> <tr> <td>Other</td> <td></td> <td></td> <td></td> </tr> </tbody> </table>	Name	Type	Use	Fixed	alternativeCommunicationMethodIndicator	string	M		A code to indicate the type of alternative communication method.				AUTOVON				EDIAccessNumber				FederalTelecommunicationsSystem				IPAddress				PacketSwitching				PrinterID				StationCode				Telemail				Telex				TWX				Other			
Name	Type	Use	Fixed																																																						
alternativeCommunicationMethodIndicator	string	M																																																							
A code to indicate the type of alternative communication method.																																																									
AUTOVON																																																									
EDIAccessNumber																																																									
FederalTelecommunicationsSystem																																																									
IPAddress																																																									
PacketSwitching																																																									
PrinterID																																																									
StationCode																																																									
Telemail																																																									
Telex																																																									
TWX																																																									
Other																																																									

Attachment

A collection of elements defining the details of an attachment to the document.

note																																																													
level	OrderResponseProperties OrderResponseDetails																																																												
children	<table border="1"> <thead> <tr> <th>Name</th> <th>Type</th> <th>Use</th> <th>Max</th> </tr> </thead> <tbody> <tr> <td>AttachmentPurposeCode</td> <td>string</td> <td>O</td> <td>1</td> </tr> <tr> <td colspan="4">A code to indicate the purpose of the attachment.</td> </tr> <tr> <td>Template</td> <td></td> <td></td> <td></td> </tr> <tr> <td>Other</td> <td></td> <td></td> <td></td> </tr> <tr> <td>FileName</td> <td>string</td> <td>O</td> <td>1</td> </tr> <tr> <td colspan="4">The name of the file in an attachment.</td> </tr> <tr> <td>AttachmentTitle</td> <td>string</td> <td>O</td> <td>1</td> </tr> <tr> <td colspan="4">The title of the attachment.</td> </tr> <tr> <td>AttachmentDescription</td> <td>string</td> <td>O</td> <td>1</td> </tr> <tr> <td colspan="4">A free-form textual description of the attachment.</td> </tr> <tr> <td>FileType</td> <td>string</td> <td>O</td> <td>1</td> </tr> <tr> <td colspan="4">The type of the file in an attachment.</td> </tr> <tr> <td>AttachmentLocation</td> <td>string</td> <td>O</td> <td>1</td> </tr> <tr> <td colspan="4">The location of the attachment, such as a URL.</td> </tr> </tbody> </table>	Name	Type	Use	Max	AttachmentPurposeCode	string	O	1	A code to indicate the purpose of the attachment.				Template				Other				FileName	string	O	1	The name of the file in an attachment.				AttachmentTitle	string	O	1	The title of the attachment.				AttachmentDescription	string	O	1	A free-form textual description of the attachment.				FileType	string	O	1	The type of the file in an attachment.				AttachmentLocation	string	O	1	The location of the attachment, such as a URL.			
Name	Type	Use	Max																																																										
AttachmentPurposeCode	string	O	1																																																										
A code to indicate the purpose of the attachment.																																																													
Template																																																													
Other																																																													
FileName	string	O	1																																																										
The name of the file in an attachment.																																																													
AttachmentTitle	string	O	1																																																										
The title of the attachment.																																																													
AttachmentDescription	string	O	1																																																										
A free-form textual description of the attachment.																																																													
FileType	string	O	1																																																										
The type of the file in an attachment.																																																													
AttachmentLocation	string	O	1																																																										
The location of the attachment, such as a URL.																																																													
parent(s)	OrderResponseLineItem OrderResponseProperties OrderResponseSubLineItem																																																												

Block

A collection of elements defining the details of a block, which identifies a location.

note																	
level	OrderResponseProperties OrderResponseDetails																
children	<table border="1"> <thead> <tr> <th>Name</th> <th>Type</th> <th>Use</th> <th>Max</th> </tr> </thead> <tbody> <tr> <td>BlockName The name of the block, which identifies a location.</td> <td>string</td> <td>O</td> <td>1</td> </tr> <tr> <td>OCSGNumber The Outer Continental Shelf Gulf number.</td> <td>string</td> <td>O</td> <td>1</td> </tr> <tr> <td>StateLease Lease on state land.</td> <td>string</td> <td>O</td> <td>1</td> </tr> </tbody> </table>	Name	Type	Use	Max	BlockName The name of the block, which identifies a location.	string	O	1	OCSGNumber The Outer Continental Shelf Gulf number.	string	O	1	StateLease Lease on state land.	string	O	1
Name	Type	Use	Max														
BlockName The name of the block, which identifies a location.	string	O	1														
OCSGNumber The Outer Continental Shelf Gulf number.	string	O	1														
StateLease Lease on state land.	string	O	1														
parent(s)	GeographicalInformation																

ChangeOrderInformation

A collection of elements which identifies a particular Change Order.

note																									
level	OrderResponseProperties																								
children	<table border="1"> <thead> <tr> <th>Name</th> <th>Type</th> <th>Use</th> <th>Max</th> </tr> </thead> <tbody> <tr> <td>OrderChangeNumber A unique identifier for an Order Change message.</td> <td>string</td> <td>M</td> <td>1</td> </tr> <tr> <td>OrderChangeDate The date upon which a change order was created or deemed to have been issued. Format is CCYY-MM-DD where "CC" represents the century, "YY" the year, "MM" the month and "DD" the day.</td> <td>date</td> <td>M</td> <td>1</td> </tr> <tr> <td>PurchaseOrderTypeCode A code indicating the kind of purchase order. Confirmation EmergencyOrder ReleaseOrDeliveryOrder RushOrder StandAloneOrder SupplyOrServiceOrder Other</td> <td>string</td> <td>O</td> <td>1</td> </tr> <tr> <td>SalesOrderNumber The identifier assigned by a supplier to an order placed by a customer.</td> <td>string</td> <td>O</td> <td>1</td> </tr> <tr> <td>SequenceNumber A number to identify the change or revision against an order. The first change submitted for an order would have a value of 1, the second 2, and so on.</td> <td>integer</td> <td>O</td> <td>1</td> </tr> </tbody> </table>	Name	Type	Use	Max	OrderChangeNumber A unique identifier for an Order Change message.	string	M	1	OrderChangeDate The date upon which a change order was created or deemed to have been issued. Format is CCYY-MM-DD where "CC" represents the century, "YY" the year, "MM" the month and "DD" the day.	date	M	1	PurchaseOrderTypeCode A code indicating the kind of purchase order. Confirmation EmergencyOrder ReleaseOrDeliveryOrder RushOrder StandAloneOrder SupplyOrServiceOrder Other	string	O	1	SalesOrderNumber The identifier assigned by a supplier to an order placed by a customer.	string	O	1	SequenceNumber A number to identify the change or revision against an order. The first change submitted for an order would have a value of 1, the second 2, and so on.	integer	O	1
Name	Type	Use	Max																						
OrderChangeNumber A unique identifier for an Order Change message.	string	M	1																						
OrderChangeDate The date upon which a change order was created or deemed to have been issued. Format is CCYY-MM-DD where "CC" represents the century, "YY" the year, "MM" the month and "DD" the day.	date	M	1																						
PurchaseOrderTypeCode A code indicating the kind of purchase order. Confirmation EmergencyOrder ReleaseOrDeliveryOrder RushOrder StandAloneOrder SupplyOrServiceOrder Other	string	O	1																						
SalesOrderNumber The identifier assigned by a supplier to an order placed by a customer.	string	O	1																						
SequenceNumber A number to identify the change or revision against an order. The first change submitted for an order would have a value of 1, the second 2, and so on.	integer	O	1																						
parent(s)	OrderResponseProperties																								

CommodityCode

A code indicating the categorization of a product or service in accordance with a particular standard.

note	
level	OrderResponseDetails

parent(s)	OrderResponseLineItem OrderResponseSubLineItem			
attributes	Name agencyIndicator A code indicating what agency or organization is responsible for defining the commodity code list.	Type string	Use 0	Fixed

ContactIdentifier

The identifier of the contact person or department.

note				
level	OrderResponseProperties OrderResponseDetails			
parent(s)	ContactInformation			
attributes	Name	Type	Use	Fixed
	contactIdentifierIndicator	string	O	
	A code to identify the origin of the contact identifier.			
	AssignedByBuyer			
	AssignedBySeller			
	EmployeeID			
	Other			

ContactInformation

A collection of elements defining details of communication for a contact person.

note	• It is recommended that ContactInformation be used at either the Property or Detail level, but not both.			
level	OrderResponseProperties OrderResponseDetails			
children	Name	Type	Use	Max
	ContactIdentifier	string	O	1
	The identifier of the contact person or department.			
	ContactName	string	O	1
	The name of the contact person within the organization.			
	ContactDescription	string	O	1
	A free-form textual description of the contact.			
	Telephone		O	U
	A collection of elements detailing information about a telephone number.			
	EmailAddress	string	O	1
The address assigned to a person or organization to receive electronic messages.				
AlternativeCommunicationMethod	string	O	U	
Additional methods of communication, such as an IP Address or Printer ID, in addition to those specifically listed elsewhere in contact or address information.				
parent(s)	PartnerInformation			
attributes	Name	Type	Use	Fixed
	contactInformationIndicator	string	M	
	A code indicating the function of the contact.			
	BuyerDepartment			
	DeliveryContact			
	DesignEngineer			
	Engineer			
	EnteredBy			
	FieldRepresentative			
	OfficeRepresentative			
	OrderContact			
	PurchasingAgent			

	QuotePreparer
	QuoteRequestor
	RFQContact
	SalesRepresentative
	ServiceCoordinator
	TechnicalMarketingRepresentative
	Other

CountryOfFinalDestination

The country where product is ultimately delivered or is deemed to have been delivered.

note				
level	OrderResponseProperties OrderResponseDetails			
children	Name CountryCode A code indicating a country. Use the codelist from ISO 3166-1:1997 Codes for the representation of names of countries and their subdivisions – Part 1: Country Codes.	Type string	Use M	Max 1
parent(s)	OrderResponseLineItem OrderResponseProperties OrderResponseSubLineItem			

CountryOfOrigin

The country where product originates or is deemed to have originated.

note				
level	OrderResponseProperties OrderResponseDetails			
children	Name CountryCode A code indicating a country. Use the codelist from ISO 3166-1:1997 Codes for the representation of names of countries and their subdivisions – Part 1: Country Codes.	Type string	Use M	Max 1
parent(s)	OrderResponseLineItem OrderResponseProperties OrderResponseSubLineItem			

CreditCardInformation

A collection of elements defining the details of a credit card.

note				
level	OrderResponseProperties OrderResponseDetails			
children	Name CreditCardNumber The number identifying the credit card account. CardHolderName The name of the party to whom the credit card is registered. CreditCardType The type of credit card as generally identified by financial institutions. CreditCardExpirationDate The date upon which a credit card expires and is no longer valid. Format is CCYY-MM-DD where "CC" represents the century, "YY" the year, "MM" the month and "DD" the day. CardAuthorizationCode The authorization number assigned to a transaction against a credit card.	Type integer string string date string	Use M O O O O	Max 1 1 1 1 1

	<p>CardReferenceNumber string 0 1</p> <p>A customer reference number which is used to enable transmission of customer specific information with the card.</p>
parent(s)	<p>OrderResponseLineItem</p> <p>OrderResponseProperties</p> <p>OrderResponseSubLineItem</p>

Deferred

The terms for a deferred payment in relation to a transaction.

note				
level	OrderResponseProperties OrderResponseDetails			
children	<p>Name</p> <p>DeferredAmount</p> <p>The monetary amount that is deferred for payment based upon terms in an invoice, contract or agreement.</p> <p>DeferredDueDate</p> <p>The date upon which a deferred payment is due.</p> <p>Format is CCYY-MM-DD where "CC" represents the century, "YY" the year, "MM" the month and "DD" the day.</p> <p>PercentDeferredPayable</p> <p>The amount due that is deferred for payment expressed as a percentage.</p> <p>Description</p> <p>A free-form textual explanation or clarification.</p>	<p>Type</p> <p>date</p> <p>decimal</p> <p>string</p>	<p>Use</p> <p>O</p> <p>O</p> <p>O</p>	<p>Max</p> <p>1</p> <p>1</p> <p>1</p> <p>1</p>
parent(s)	PaymentTerms			

DeferredAmount

The monetary amount that is deferred for payment based upon terms in an invoice, contract or agreement.

note				
level	OrderResponseProperties OrderResponseDetails			
children	<p>Name</p> <p>MonetaryAmount</p> <p>The currency value of a transaction or item.</p> <p>CurrencyCode</p> <p>A code indicating the currency in which the monetary amount is specified.</p> <p>Use the codelist from ISO 4217:2001 Codes for the representation of currencies and funds.</p>	<p>Type</p> <p>decimal</p> <p>string</p>	<p>Use</p> <p>M</p> <p>O</p>	<p>Max</p> <p>1</p> <p>1</p>
parent(s)	Deferred			

DiscountAmount

The monetary amount of a discount based upon payment terms.

note				
level	OrderResponseProperties OrderResponseDetails			
children	<p>Name</p> <p>MonetaryAmount</p> <p>The currency value of a transaction or item.</p> <p>CurrencyCode</p> <p>A code indicating the currency in which the monetary amount is specified.</p> <p>Use the codelist from ISO 4217:2001 Codes for the representation of currencies and funds.</p>	<p>Type</p> <p>decimal</p> <p>string</p>	<p>Use</p> <p>M</p> <p>O</p>	<p>Max</p> <p>1</p> <p>1</p>
parent(s)	Discounts			

Discounts

The monetary amount allowed or applied as a credit against a transaction or balance.

note				
level	OrderResponseProperties OrderResponseDetails			
children	<p>Name</p> <p>DaysDue The number of days from the payment terms basis date before a discount expires.</p> <p>DiscountsDueDate The date upon which a discount expires. Format is CCYY-MM-DD where "CC" represents the century, "YY" the year, "MM" the month and "DD" the day.</p> <p>PercentDiscount A discount to be applied to the transaction expressed as a percentage.</p> <p>DiscountAmount The monetary amount of a discount based upon payment terms.</p> <p>Description A free-form textual explanation or clarification.</p>	<p>Type</p> <p>integer</p> <p>date</p> <p>decimal</p> <p>string</p>	<p>Use</p> <p>O</p> <p>O</p> <p>O</p> <p>O</p>	<p>Max</p> <p>1</p> <p>1</p> <p>1</p> <p>1</p>
parent(s)	PaymentTerms			

EffectiveDates

The period of time (or range) where the information is valid or guaranteed.

note				
level	OrderResponseProperties OrderResponseDetails			
children	<p>Name</p> <p>FromDate The date upon which a time period begins. Format is CCYY-MM-DD where "CC" represents the century, "YY" the year, "MM" the month and "DD" the day.</p> <p>ToDate The date upon which a time period ends. Format is CCYY-MM-DD where "CC" represents the century, "YY" the year, "MM" the month and "DD" the day.</p>	<p>Type</p> <p>date</p> <p>date</p>	<p>Use</p> <p>M</p> <p>M</p>	<p>Max</p> <p>1</p> <p>1</p>
parent(s)	TaxInformation			

GeographicalInformation

A collection of elements defining a geographical location.

note	• If any one of Section, Township, or Range is given then the other two are required.			
level	OrderResponseProperties OrderResponseDetails			
children	Name	Type	Use	Max
	FieldName	string	O	1
	The name of the oil field.			
	Section	string	O	1
	A part of Section/Township/Range location identifier scheme.			
	Township	string	O	1
	A part of Section/Township/Range location identifier scheme.			
	Range	string	O	1
	A part of Section/Township/Range location identifier scheme.			
	Region	string	O	1
	The name of a geographic region.			
	Block		O	1
	A collection of elements defining the details of a block, which identifies a location.			
	GPSCoordinates		O	1
	A collection of elements containing latitude and longitude data for a specific location.			
parent(s)	JobLocationInformation Location			

GPSCoordinates

A collection of elements containing latitude and longitude data for a specific location.

note				
level	OrderResponseProperties OrderResponseDetails			
children	Name	Type	Use	Max
	Latitude	string	M	1
	The specified latitude of a location.			
	Longitude	string	M	1
	The specified longitude of a location.			
parent(s)	GeographicalInformation			

HazardousMaterialClassCode

A code indicating the kind of hazard for a material.

note				
level	OrderResponseProperties OrderResponseDetails			
parent(s)	HazardousMaterials			
attributes	Name	Type	Use	Fixed
	hazardousMaterialIndicator	string	M	
	A code which qualifies the Hazardous Material Class Code.			

HazardousMaterials

A collection of elements conveying hazardous goods information related to a product.

note	• If HazardousMaterials is used, then at least one of SpecialHandlingCode or HazardousMaterialDescription is required.			
level	OrderResponseProperties OrderResponseDetails			
children	Name	Type	Use	Max
	SpecialHandlingCode	string	O	1
	A code identifying any special transportation handling instructions			
	HazardousMaterialDescription	string	O	1
	A free-form textual explanation of information related to a hazardous shipment.			
	HazardousMaterialClassCode	string	O	U
	A code indicating the kind of hazard for a material.			
parent(s)	TransportInformation			

JobLocationIdentifier

A unique identifier referencing the job location.

note				
level	OrderResponseProperties OrderResponseDetails			
parent(s)	JobLocationInformation			
attributes	Name	Type	Use	Fixed
	jobLocationIdentifierIndicator	string	O	
	A code to define what type of location the identifier is referencing.			
	ChemicalPlant			
	Coal-Degas			
	CogenerationPlant			
	Construction			
	Dock			
	GasPlant			
	IndustrialServiceMiscellaneous			
	MilitaryGovernment			
	PaperMill			
	PetroleumPlant			
	Pipeline			
	Refinery			
	Rig			
	UtilityPlant			
	Other			

JobLocationInformation

A collection of elements giving details of a job location.

note					
level	OrderResponseProperties OrderResponseDetails				
children	Name	Type	Use	Max	
	JobLocationIdentifier	string	O	U	
	A unique identifier referencing the job location.				
	JobLocationClassCode	string	O	1	
	A code indicating the class of the job location.				
	FederalWaters				
	Land				
	InlandWaters				
	StateWaters				
	Other				
	JobLocationDescription	string	O	1	
	A free-form textual description of the job location.				
	JobLocationStatus	string	O	1	
	A code indicating whether a location is active or inactive.				
	Inactive				
	Active				
	Other				
	WellInformation			O	1
	A collection of elements detailing information about a well.				
	JobSiteCategory	string	O	1	
	A code indicating the kind of site on which the job is located.				
	Boiler				
	CivilHighways				
Compression					
Condenser					
ConstructPiles					
Dams					
HeatExchanger					
IndustrialServiceMiscellaneous					
Piping					
Production					
TowerVessel					
Turbine					
UndergroundStr					
Other					
AddressInformation			O	1	
A collection of elements defining the details of an address.					
GeographicalInformation			O	1	
A collection of elements defining a geographical location.					
parent(s)	OrderResponseLineItem OrderResponseProperties				

	OrderResponseSubLineItem
--	--

LinItemIdentifier

The unique identifier for a product or service making up the line item.

note				
level	OrderResponseDetails			
parent(s)	LinItemInformation			
attributes	Name	Type	Use	Fixed
	identifierIndicator	string	M	
	A code to indicate the origin of the identifier.			
	AssignedByBuyer			
	AssignedByManufacturer			
	AssignedBySeller			
	CatalogueNumber			
	UPCNumber			
	Other			

LinItemInformation

A collection of elements detailing identifying information about a line item.

note				
level	OrderResponseDetails			
children	Name	Type	Use	Max
	LinItemIdentifier	string	O	U
	The unique identifier for a product or service making up the line item.			
	LinItemName	string	O	1
	The name of the product or service in the line item.			
	LinItemDescription	string	O	1
	A free-form textual description of the line item.			
	ManufacturerIdentifier	string	O	1
	A unique identifier for a manufacturer.			
parent(s)	OrderResponseLinItem OrderResponseSubLinItem			

LinItemTotal

The net total monetary amount for the line item.

note				
level	OrderResponseDetails			
children	Name	Type	Use	Max
	MonetaryAmount	decimal	M	1
	The currency value of a transaction or item.			
	CurrencyCode	string	O	1
	A code indicating the currency in which the monetary amount is specified.			
	Use the codelist from ISO 4217:2001 Codes for the representation of currencies and funds.			
parent(s)	OrderResponseLinItem OrderResponseSubLinItem			

Location

A collection of elements giving details about a location.

note				
level	OrderResponseProperties OrderResponseDetails			
children	Name	Type	Use	Max
	LocationIdentifier	string	O	1
	A unique identifier for a physical location.			
	LocationName	string	O	1
	The name of the location being referenced.			
	AddressInformation		O	1
	A collection of elements defining the details of an address.			
	GeographicalInformation		O	1
	A collection of elements defining a geographical location.			
	LocationDescription	string	O	1
	Free-form textual description of the location.			
parent(s)	TransportInformation			
attributes	Name	Type	Use	Fixed
	locationIndicator	string	O	
	A code to identify what kind of location is being referenced.			
	FreightEqualizationPoint			
	OnVessel-FOBPoint			
	AssignedBySeller			
	Origin-AfterLoadingOnEquipment			
	Origin-ShippingPoint			
	Plant			
	ShippingDestination			
	Warehouse			
Other				

MeasurementRange

A collection of elements providing a minimum and maximum measurement to create a range.

note				
level	OrderResponseProperties OrderResponseDetails			
children	Name	Type	Use	Max
	MinimumMeasurement	decimal	M	1
	The smallest measurement in a given range.			
	MaximumMeasurement	decimal	M	1
	The largest measurement in a given range.			
parent(s)	PriceBasis			

OrderQuantity

The number of units of an item or service ordered.

note				
------	--	--	--	--

level	OrderResponseDetails			
children	Name	Type	Use	Max
	Quantity	decimal	M	1
	A numeric count of measure.			
children	UnitOfMeasureCode	string	M	1
	A code identifying the units in which measurement is expressed.			
parent(s)	OrderResponseLineItem OrderResponseSubLineItem			

PartnerIdentifier

A unique identifier indicating a particular partner or organization.

note				
level	OrderResponseProperties OrderResponseDetails			
parent(s)	PartnerInformation			
attributes	Name	Type	Use	Fixed
	partnerIdentifierIndicator	string	M	
	A code to identify the origin of the Partner Identifier.			
	AssignedByBuyer			
	AssignedBySeller			
	DUNSNumber			
	DUNS+4Number			
	Other			

PartnerInformation

A collection of elements detailing partner information.

note				
level	OrderResponseProperties OrderResponseDetails			
children	<p>Name</p> <p>PartnerIdentifier</p> <p>A unique identifier indicating a particular partner or organization.</p> <p>PartnerName</p> <p>The name of the organization being referenced in Partner Information.</p> <p>AddressInformation</p> <p>A collection of elements defining the details of an address.</p> <p>ContactInformation</p> <p>A collection of elements defining details of communication for a contact person.</p> <p>TaxInformation</p> <p>A collection of elements detailing tax information about a partner.</p> <p>URL</p> <p>A Uniform Resource Locator indicating an internet address.</p>	<p>Type</p> <p>string</p> <p>string</p> <p>string</p> <p>string</p> <p>string</p> <p>string</p> <p>string</p>	<p>Use</p> <p>M</p> <p>O</p> <p>O</p> <p>O</p> <p>O</p> <p>O</p>	<p>Max</p> <p>U</p> <p>1</p> <p>1</p> <p>U</p> <p>1</p> <p>1</p>
parent(s)	OrderResponseLineItem OrderResponseProperties OrderResponseSubLineItem TransportInformation			
attributes	<p>Name</p> <p>partnerRoleIndicator</p> <p>A code to indicate the role in this transaction of the partner being referenced.</p> <p>BillAndShipTo</p> <p>BillTo</p> <p>Carrier</p> <p>CommissionPayee</p> <p>FinalRecipient</p> <p>Manufacturer</p> <p>Marketplace</p> <p>MaterialIssuer</p> <p>OnsiteContractingCompany</p> <p>OperatingCompany</p> <p>Payer</p> <p>PrimaryContractor</p> <p>RemitTo</p> <p>Seller</p> <p>ShipFromParty</p> <p>ShipToParty</p> <p>SoldTo</p> <p>ThirdParty</p> <p>Vendor</p> <p>Warehouse</p> <p>Other</p>	<p>Type</p> <p>string</p>	<p>Use</p> <p>M</p>	<p>Fixed</p>

PaymentTerms

A collection of elements detailing payment terms information.

note	<ul style="list-style-type: none"> • If either one of PercentDiscount or DiscountAmount is used, then at least one of DiscountsDueDate or DaysDue is required. • If DeferredDueDate is used, then at least one of DeferredAmountDue or PercentOfInvoicePayable is required. 			
level	OrderResponseProperties OrderResponseDetails			
children	<p>Name</p> <p>PaymentTermsOfSale</p> <p>The terms on which payment is calculated for the transaction.</p> <p>Description</p> <p>A free-form textual explanation or clarification.</p> <p>PaymentTermsBasisDateCode</p> <p>A code identifying the beginning of the terms period.</p> <p>DeliveryDate</p> <p>InvoiceDate</p> <p>InvoiceReceiptDate</p> <p>Other</p> <p>PaymentTermsBasisDate</p> <p>The date from which payment terms or discounts are calculated or based.</p> <p>Format is CCYY-MM-DD where "CC" represents the century, "YY" the year, "MM" the month and "DD" the day.</p> <p>TermsNetDays</p> <p>The number of days until the total invoice amount is due (discount not applicable).</p> <p>PercentOfInvoicePayable</p> <p>The amount of an invoice payable expressed as a percentage.</p> <p>Discounts</p> <p>The monetary amount allowed or applied as a credit against a transaction or balance.</p> <p>Deferred</p> <p>The terms for a deferred payment in relation to a transaction.</p> <p>Penalty</p> <p>A percentage used to calculate the penalty on any balance unpaid by the due date.</p>	Type	Use	Max
		string	O	1
		string	O	1
		string	O	1
		date	O	1
		integer	O	1
		decimal	O	1
			O	1
			O	1
		string	O	1
parent(s)	OrderResponseLineItem OrderResponseProperties OrderResponseSubLineItem			

PostalCountry

The country code indicating the country to which mail should be delivered.

note				
level	OrderResponseProperties OrderResponseDetails			
children	<p>Name</p> <p>CountryCode</p> <p>A code indicating a country.</p> <p>Use the codelist from ISO 3166-1:1997 Codes for the representation of names of countries and their subdivisions – Part 1: Country Codes.</p>	Type	Use	Max
		string	M	1

parent(s)	AddressInformation
-----------	------------------------------------

PriceBasis

A structure allowing for a price to be based on more than just a single unit of measure.

note				
level	OrderResponseDetails			
children	<p>Name</p> <p>Measurement A numeric value for technical or attribute data.</p> <p>MeasurementRange A collection of elements providing a minimum and maximum measurement to create a range.</p> <p>UnitOfMeasureCode A code identifying the units in which measurement is expressed.</p> <p>BasisDescription Free-form textual description of the basis.</p>	<p>Type</p> <p>decimal</p> <p>string</p> <p>string</p>	<p>Use</p> <p>O</p> <p>O</p> <p>M</p> <p>O</p>	<p>Max</p> <p>1</p> <p>1</p> <p>1</p> <p>1</p>
parent(s)	Pricing			

Pricing

A collection of elements detailing price information.

note				
level	OrderResponseDetails			
children	<p>Name</p> <p>UnitPrice The unit price of the product or service being sold.</p> <p>PriceBasis A structure allowing for a price to be based on more than just a single unit of measure.</p>	<p>Type</p>	<p>Use</p> <p>M</p> <p>O</p>	<p>Max</p> <p>1</p> <p>U</p>
parent(s)	OrderResponseLineItem OrderResponseSubLineItem			

PrimaryCurrency

The currency code indicating the currency to be used for the transaction.

note				
level	OrderResponseProperties			
children	<p>Name</p> <p>CurrencyCode A code indicating the currency in which the monetary amount is specified. Use the codelist from ISO 4217:2001 Codes for the representation of currencies and funds.</p>	<p>Type</p> <p>string</p>	<p>Use</p> <p>M</p>	<p>Max</p> <p>1</p>
parent(s)	OrderResponseProperties			

PurchaseOrderInformation

A collection of elements containing relevant purchase order information which needs to be referenced within other documentation and/or messages.

note																																																																																					
level	OrderResponseProperties																																																																																				
children	<table border="0" style="width: 100%; border-collapse: collapse;"> <thead> <tr> <th style="text-align: left; width: 65%;">Name</th> <th style="text-align: left; width: 15%;">Type</th> <th style="text-align: left; width: 10%;">Use</th> <th style="text-align: left; width: 10%;">Max</th> </tr> </thead> <tbody> <tr> <td>PurchaseOrderNumber</td> <td>string</td> <td>M</td> <td>1</td> </tr> <tr> <td colspan="4">A unique identifier for an Order Create message.</td> </tr> <tr> <td>PurchaseOrderIssuedDate</td> <td>date</td> <td>O</td> <td>1</td> </tr> <tr> <td colspan="4">The date upon which an order was created or deemed to have been issued.</td> </tr> <tr> <td colspan="4">Format is CCYY-MM-DD where "CC" represents the century, "YY" the year, "MM" the month and "DD" the day.</td> </tr> <tr> <td>PurchaseOrderTypeCode</td> <td>string</td> <td>O</td> <td>1</td> </tr> <tr> <td colspan="4">A code indicating the kind of purchase order.</td> </tr> <tr> <td colspan="4">Confirmation</td> </tr> <tr> <td colspan="4">EmergencyOrder</td> </tr> <tr> <td colspan="4">ReleaseOrDeliveryOrder</td> </tr> <tr> <td colspan="4">RushOrder</td> </tr> <tr> <td colspan="4">StandAloneOrder</td> </tr> <tr> <td colspan="4">SupplyOrServiceOrder</td> </tr> <tr> <td colspan="4">Other</td> </tr> <tr> <td>ReleaseNumber</td> <td>string</td> <td>O</td> <td>1</td> </tr> <tr> <td colspan="4">A number identifying a release against a purchase order previously placed by the parties involved in the transaction. It is the equivalent to a work order number.</td> </tr> <tr> <td>SalesOrderNumber</td> <td>string</td> <td>O</td> <td>1</td> </tr> <tr> <td colspan="4">The identifier assigned by a supplier to an order placed by a customer.</td> </tr> <tr> <td>RevisionNumber</td> <td>string</td> <td>O</td> <td>1</td> </tr> <tr> <td colspan="4">A number indicating the version of the document. It is used if a message is resent in its entirety to replace an earlier version.</td> </tr> </tbody> </table>	Name	Type	Use	Max	PurchaseOrderNumber	string	M	1	A unique identifier for an Order Create message.				PurchaseOrderIssuedDate	date	O	1	The date upon which an order was created or deemed to have been issued.				Format is CCYY-MM-DD where "CC" represents the century, "YY" the year, "MM" the month and "DD" the day.				PurchaseOrderTypeCode	string	O	1	A code indicating the kind of purchase order.				Confirmation				EmergencyOrder				ReleaseOrDeliveryOrder				RushOrder				StandAloneOrder				SupplyOrServiceOrder				Other				ReleaseNumber	string	O	1	A number identifying a release against a purchase order previously placed by the parties involved in the transaction. It is the equivalent to a work order number.				SalesOrderNumber	string	O	1	The identifier assigned by a supplier to an order placed by a customer.				RevisionNumber	string	O	1	A number indicating the version of the document. It is used if a message is resent in its entirety to replace an earlier version.			
Name	Type	Use	Max																																																																																		
PurchaseOrderNumber	string	M	1																																																																																		
A unique identifier for an Order Create message.																																																																																					
PurchaseOrderIssuedDate	date	O	1																																																																																		
The date upon which an order was created or deemed to have been issued.																																																																																					
Format is CCYY-MM-DD where "CC" represents the century, "YY" the year, "MM" the month and "DD" the day.																																																																																					
PurchaseOrderTypeCode	string	O	1																																																																																		
A code indicating the kind of purchase order.																																																																																					
Confirmation																																																																																					
EmergencyOrder																																																																																					
ReleaseOrDeliveryOrder																																																																																					
RushOrder																																																																																					
StandAloneOrder																																																																																					
SupplyOrServiceOrder																																																																																					
Other																																																																																					
ReleaseNumber	string	O	1																																																																																		
A number identifying a release against a purchase order previously placed by the parties involved in the transaction. It is the equivalent to a work order number.																																																																																					
SalesOrderNumber	string	O	1																																																																																		
The identifier assigned by a supplier to an order placed by a customer.																																																																																					
RevisionNumber	string	O	1																																																																																		
A number indicating the version of the document. It is used if a message is resent in its entirety to replace an earlier version.																																																																																					
parent(s)	OrderResponseProperties																																																																																				

ReferenceInformation

A collection of elements detailing references to information that reside outside of the current transaction message.

note	• It is recommended that ReferenceInformation be used at either the Property or Detail level, but not both.			
level	OrderResponseProperties OrderResponseDetails			
children	Name	Type	Use	Max
	ReferenceNumber	string	M	1
	A number or identifier that is used to reference documents or information not included within a particular message. The referenceInformationIndicator attribute qualifies what this number references			
	Description	string	O	1
	A free-form textual explanation or clarification.			
parent(s)	OrderResponseLineItem OrderResponseProperties OrderResponseSubLineItem			
attributes	Name	Type	Use	Fixed
	referenceInformationIndicator	string	M	
	A code to identify what type of information is being referenced.			
	AFENumber			
	BatchNumber			
	BillOfLading			
	Certification			
	CertifiedInspectionTestResults			
	ConfigurationNumber			
	ContractNumber			
	CostAllocationReference			
	CostCenter			
	CustomerAccountingReference			
	CustomerReferenceNumber			
	DeliveryTicketNumber			
	DivisionIdentifier			
	EngineeringChangeOrderNumber			
	JobNumber			
	LetterOfCreditNumber			
	LocationNumber			
	MaterialSafetyDataSheet			
	OperatorGeneralLedgerCode			
	OriginalInvoiceNumber			
	PriceAreaNumber			
	ProjectNumber			
	ProposalNumber			
	QuoteNumber			
	RequestForQuotationNumber			
	TemplateName			
	Other			

SecondCurrency

The currency code indicating a second currency, such as for European countries using the Euro and a local currency.

note				
level	OrderResponseProperties			
children	<p>Name</p> <p>CurrencyCode</p> <p>A code indicating the currency in which the monetary amount is specified.</p> <p>Use the codelist from ISO 4217:2001 Codes for the representation of currencies and funds.</p>	Type	Use	Max
		string	M	1
parent(s)	OrderResponseProperties			

ServiceDateTime

The actual and/or schedule dates for a service.

note	<p>Format is CCYY-MM-DDThh:mm:ss where "CC" represents the century, "YY" the year, "MM" the month and "DD" the day. The letter "T" is the date/time separator and "hh", "mm", "ss" represent hour, minute and second respectively.</p> <p>The CCYY field must have at least four digits, the MM, DD, SS, hh, mm and ss fields exactly two digits each. Leading zeroes must be used if the field would otherwise have too few digits.</p> <p>If no time is to be given then use zeroes in the hh, mm and ss fields.</p> <p>This representation may be immediately followed by a "Z" to indicate Coordinated Universal Time (UTC) or, to indicate the time zone, i.e. the difference between the local time and Coordinated Universal Time, immediately followed by a sign, + or -, followed by the difference from UTC represented as hh:mm (note: the minutes part is required). For example, to indicate 1:20 pm on May the 31st, 1999 for Eastern Standard Time which is 5 hours behind Coordinated Universal Time (UTC), one would write: 1999-05-31T13:20:00-05:00.</p>			
level	OrderResponseProperties OrderResponseDetails			
parent(s)	OrderResponseLineItem OrderResponseProperties OrderResponseSubLineItem			
attributes	<p>Name</p> <p>dateTypeIndicator</p> <p>A code to identify which date being given.</p> <p>ArriveLocationDate</p> <p>InvoiceDueDate</p> <p>InvoicePeriodStartDate</p> <p>LeaveLocationDate</p> <p>PromisedForDelivery</p> <p>PromisedForShipment</p> <p>RequestedForDelivery</p> <p>RequestedForShipment</p> <p>ServicePeriodEnd</p> <p>ServicePeriodStart</p> <p>ShipDate</p> <p>Other</p>	Type	Use	Fixed
		string	M	

SpecialInstructions

A free-form textual description of special requirements.

note																																																								
level	OrderResponseProperties OrderResponseDetails																																																							
parent(s)	OrderResponseLineItem OrderResponseProperties OrderResponseSubLineItem																																																							
attributes	<table style="width: 100%; border-collapse: collapse;"> <thead> <tr> <th style="text-align: left;">Name</th> <th style="text-align: left;">Type</th> <th style="text-align: left;">Use</th> <th style="text-align: left;">Fixed</th> </tr> </thead> <tbody> <tr> <td>instructionIndicator</td> <td>string</td> <td>O</td> <td></td> </tr> <tr> <td colspan="4">A code to identify the type of instruction being given.</td> </tr> <tr> <td>CarrierInstructions</td> <td></td> <td></td> <td></td> </tr> <tr> <td>ConsigneeInstructions</td> <td></td> <td></td> <td></td> </tr> <tr> <td>DriverInstructions</td> <td></td> <td></td> <td></td> </tr> <tr> <td>EmptyReturnInstructions</td> <td></td> <td></td> <td></td> </tr> <tr> <td>InspectionInstructions</td> <td></td> <td></td> <td></td> </tr> <tr> <td>RoutingInstructions</td> <td></td> <td></td> <td></td> </tr> <tr> <td>ShipperInstructions</td> <td></td> <td></td> <td></td> </tr> <tr> <td>ShortLeadTime</td> <td></td> <td></td> <td></td> </tr> <tr> <td>Tolerances</td> <td></td> <td></td> <td></td> </tr> <tr> <td>Other</td> <td></td> <td></td> <td></td> </tr> </tbody> </table>	Name	Type	Use	Fixed	instructionIndicator	string	O		A code to identify the type of instruction being given.				CarrierInstructions				ConsigneeInstructions				DriverInstructions				EmptyReturnInstructions				InspectionInstructions				RoutingInstructions				ShipperInstructions				ShortLeadTime				Tolerances				Other						
Name	Type	Use	Fixed																																																					
instructionIndicator	string	O																																																						
A code to identify the type of instruction being given.																																																								
CarrierInstructions																																																								
ConsigneeInstructions																																																								
DriverInstructions																																																								
EmptyReturnInstructions																																																								
InspectionInstructions																																																								
RoutingInstructions																																																								
ShipperInstructions																																																								
ShortLeadTime																																																								
Tolerances																																																								
Other																																																								

TaxAmount

The monetary amount of the tax.

note				
level	OrderResponseDetails			
children	Name	Type	Use	Max
	MonetaryAmount	decimal	M	1
	The currency value of a transaction or item.			
	CurrencyCode	string	O	1
	A code indicating the currency in which the monetary amount is specified.			
	Use the codelist from ISO 4217:2001 Codes for the representation of currencies and funds.			
parent(s)	Tax			

TaxBasisAmount

The monetary amount which is subject to tax.

note				
level	OrderResponseDetails			
children	Name	Type	Use	Max
	MonetaryAmount	decimal	M	1
	The currency value of a transaction or item.			
	CurrencyCode	string	O	1
	A code indicating the currency in which the monetary amount is specified.			
	Use the codelist from ISO 4217:2001 Codes for the representation of currencies and funds.			
parent(s)	Tax			

TaxInformation

A collection of elements detailing tax information about a partner.

note				
level	OrderResponseProperties OrderResponseDetails			
children	Name	Type	Use	Max
	TaxIdentifierNumber	string	O	1
	A unique number or code issued to an organization by a governmental or regulatory body identifying that entity for tax purposes.			
	Jurisdiction	string	O	1
	The authority exercised by a nation, a judicial body, or a legislative body over persons, places, and property. Jurisdiction may apply to the territory over which a nation has control, including the land area, the adjacent sea, and the airspace above. It may also refer to the authority of an international body to make decisions binding on national entities.			
TaxCertificateType	string	O	1	
The category of tax certificate for which an identifying number is issued.				
TaxCertificateNumber	string	O	1	
The identifying number for a tax certificate such as tax exemption, sales and use tax certificate or other such document.				
parent(s)	PartnerInformation			

TaxLocation

The physical or deemed location at which tax is calculated based upon jurisdiction by a governmental or regulatory body.

note				
level	OrderResponseDetails			
children	Name	Type	Use	Max
	LocationIdentifier	string	O	1
	A unique identifier for a physical location.			
	LocationName	string	O	1
	The name of the location being referenced.			
children	LocationDescription	string	O	1
	Free-form textual description of the location.			
	AddressInformation		O	1
	A collection of elements defining the details of an address.			
parent(s)	Tax			

Telephone

A collection of elements detailing information about a telephone number.

note				
level	OrderResponseProperties OrderResponseDetails			
children	Name	Type	Use	Max
	PhoneNumber	string	M	1
	A numerical sequence to reach a telephone attached to a communication network.			
	PhoneNumberExtension	string	O	1
	An extension number that is needed to further identify the phone number.			
children	TelecomCountryCode	string	O	1
	The dialing code from another country to access the telephone network in another country.			
	TelecomAreaCode	string	O	1
	The area code within a country or jurisdiction, if needed, to access local telephones within the country.			
parent(s)	ContactInformation			
attributes	Name	Type	Use	Fixed
	telephoneIndicator	string	O	
	A code to indicate the type of phone number being given.			
	Fax			
	Mobile			
	Pager			
	Voice			
Other				

TotalAmount

The total monetary amount of an order.

note	
level	OrderResponseSummary

children	Name	Type	Use	Max
	MonetaryAmount The currency value of a transaction or item.	decimal	M	1
	CurrencyCode A code indicating the currency in which the monetary amount is specified. Use the codelist from ISO 4217:2001 Codes for the representation of currencies and funds.	string	O	1
	parent(s)	OrderResponseSummary		

TransportInformation

A collection of elements detailing how product is transported.

note	• If TransportInformation is used, then at least one of TransportMethodCode, Routing, or ServiceLevelCode is required.			
level	OrderResponseProperties OrderResponseDetails			
children	Name	Type	Use	Max
	ShipmentMethodOfPayment A code indicating payment terms for transportation charges. Collect Collect-FreightCreditedBackToCustomer CustomerPickupBackhaul Pickup PrepaidBySeller Prepaid-ChargedToCustomer ServiceFreight-NoCharge ThirdPartyPay Other	string	M	1
	RoutingSequenceCode A code indicating the relationship of a carrier to a specific shipment movement. OriginCarrier-AirMotorOcean OriginDeliveryCarrier-AnyMode Other	string	O	1
	TransportMethodCode A code indicating the mode of transportation used to move product. Air AirExpress Barge BestWay-ShippersOption Boat CustomerPickup ExpeditedTruck Motor-CommonCarrier Ocean ParcelPost Rail SupplierTruck Truck Vessel Other	string	O	1
	PartnerInformation A collection of elements detailing partner information.		O	U
	Location A collection of elements giving details about a location.		O	U

	<p>ShipmentTermsCode A code indicating the terms under which a product is shipped, such as Freight Prepaid, FOB or similar.</p> <p>Routing A free-form description of the shipping route to be provided for transportation of product.</p> <p>ServiceLevelCode A code indicating the level of service required.</p> <p>HazardousMaterials A collection of elements conveying hazardous goods information related to a product.</p> <p>CarrierEquipmentCode A code indicating the kind of equipment parent(s) the carrier.</p> <p>TransportName The identifier of specific vessel, truck, railcar, etc.</p>	string	O	1
		string	O	1
		string	O	1
			O	1
		string	O	1
		string	O	1
parent(s)	<p>OrderResponseLineItem</p> <p>OrderResponseProperties</p> <p>OrderResponseSubLineItem</p>			

UnitPrice

A collection of elements detailing how product is transported.

note				
level	OrderResponseDetails			
children	<p>Name</p> <p>MonetaryAmount The currency value of a transaction or item.</p> <p>UnitOfMeasureCode A code identifying the units in which measurement is expressed.</p> <p>CurrencyCode A code indicating the currency in which the monetary amount is specified. Use the codelist from ISO 4217:2001 Codes for the representation of currencies and funds.</p>	Type	Use	Max
		decimal	M	1
		string	M	1
		string	O	1
parent(s)	Pricing			

WellIdentifier

A unique identifier referencing a well, such as an API or UWI number.

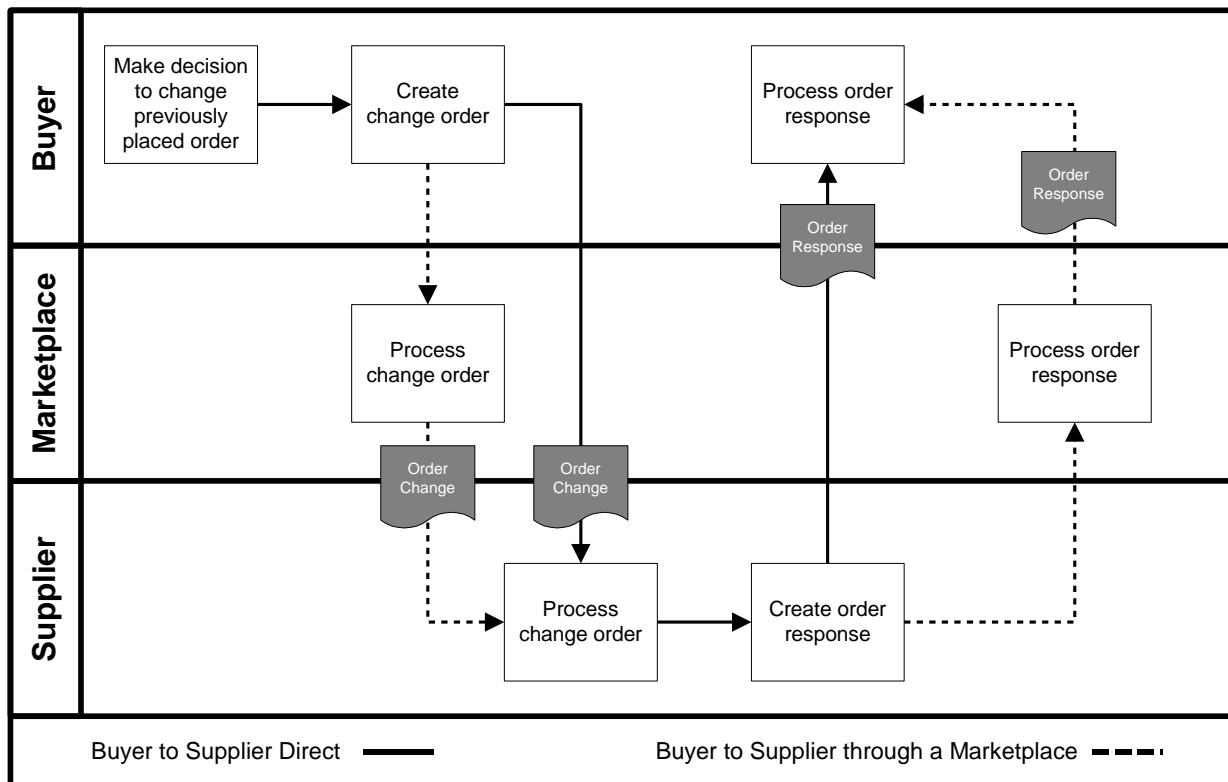
note				
level	<p>OrderResponseProperties</p> <p>OrderResponseDetails</p>			
parent(s)	WellInformation			
attributes	<p>Name</p> <p>wellIdentifierIndicator A code to indicate the origin of the Well Identifier.</p> <p>APINumber</p> <p>CustomerNumber</p> <p>UWINumber</p> <p>Other</p>	Type	Use	Fixed
		string	O	

parent(s)	JobLocationInformation
-----------	--

6.0 Order Change

6.1 Business Process Diagram

Below is the Business Process Diagram for the Order Change transaction, using either a B2B or Marketplace model. Solid lines indicate transactions between a Buyer and Seller directly. Dashed lines illustrate the transactions between the Buyer and Seller via a Marketplace. These are not the only two methods in which the process can take place, however, they represent the two primary processes. Third parties other than a Marketplace may be involved if necessary.



B2B Model - A Buyer or buying organization makes a decision to change parts of a previously placed order. A change order is created and sent to the Seller. The Seller processes the change order and sends a response to the Buyer either accepting or denying the changes.

Marketplace Model - A Buyer or buying organization makes a decision to change parts of a previously placed order. A change order is created on a Marketplace and sent to the Seller. The Seller processes the order and sends a response to the Buyer through the Marketplace either accepting or denying the terms of the order.

The Order Change document is used when a Buyer wishes to alter a previously placed purchase order. The Buyer should send only the changes on the Order Change. If the order is to be cancelled, the Order Change can be used by canceling every line item on the order.

6.2 Legend to Tables

The following tables detail the elements and attributes that make up the Order Change. The legend below provides guidance to understanding the element tables. The legend is an example only and is not part of the document standard data.

Telephone ②

A collection of elements detailing information about a telephone number.

③	note					
	level	OrderCreateProperties OrderCreateDetails				
	children	<p>⑤ Name</p> <p>PhoneNumber ⑥ ⑦</p> <p>A numerical sequence to reach a telephone attached to a communication network.</p> <p>PhoneNumberExtension ⑧</p> <p>An extension number that is needed to further identify the phone number.</p> <p>TelecomCountryCode ⑧</p> <p>The dialing code from another country to access the telephone network in another country.</p> <p>TelecomAreaCode ⑧</p> <p>The area code within a country or jurisdiction, if needed, to access local telephones within the country.</p>	Type	Use	Max	
	parent(s)	ContactInformation ⑨				
	attributes	<p>⑩ Name</p> <p>telephoneIndicator ⑪ ⑭ ⑫</p> <p>A code to indicate the type of phone number being given.</p> <p>Fax</p> <p>Mobile</p> <p>Pager</p> <p>Voice</p> <p>Other</p>	Type	Use	Fixed	

Legend	
1	The name of the element.
2	The definition of the element.
3	Contains any business rules or comments about the element
4	Identifies whether or not the element is under the Property, Detail, or Summary level of the document
5	Contains the name of the child elements and their definitions. Those elements in blue are links to the element specification. Only those elements that contain children or attributes are hyperlinked.
6	Indicates the data type of the element.
7	Indicates whether the element is mandatory (M) or optional (O).
8	Indicates whether the element can have a maximum of one occurrence (1) or unbounded multiple occurrences (U)
9	Indicates the parent element of the element.
10	Contains the name of any attributes and their definitions.
11	Indicates the data type of the attribute. If the type is blank, then the element contains children rather than data.
12	Indicates whether the attribute is mandatory (M) or optional (O).

13	Provides a fixed value for the attribute.
14	The shaded areas provide either code list values, rules, or notes about the child element or attribute.

The document, its properties, details, line item, sub-line item, and summary elements are presented first. They are followed by an alphabetical listing of those elements used in the document and have children or attributes.

6.3 Document Detail

OrderChange

The root element of the Order Change message. It is used to make changes to a previously placed order.

note		Type	Use	Max
children	Name			
	OrderChangeProperties		M	1
	A collection of elements defining the change order "meta-data" or "common data".			
	OrderChangeDetails		M	1
	A collection of elements defining the details of the Order Create message.			
	OrderChangeSummary		M	1
	A collection of elements detailing the totals of the change order.			
attributes	Name	Type	Use	Fixed
	transactionPurposeIndicator	string	M	
	A code indicating the purpose of the transaction.			
	Add			
	Cancellation			
	Change			
	Confirmation			
	Delete			
	Duplicate			
	Original			
	Replace			
	Request			
Other				
version	decimal	M	1.0	
A fixed number indicating the version of the PIDX XML Standard on which the transaction is based.				

OrderChangeProperties

A collection of elements defining the change order "meta-data" or "common data".

note		Type	Use	Max
children	Name			
	OrderChangeNumber A unique identifier for an Order Change message.	string	M	1
	OrderChangeDate The date upon which a change order was created or deemed to have been issued Format is CCYY-MM-DD where "CC" represents the century, "YY" the year, "MM" the month and "DD" the day.	date	M	1
	PurchaseOrderInformation A collection of elements containing relevant purchase order information which needs to be referenced within other documentation and/or messages.		M	1
	PartnerInformation A collection of elements detailing partner information.		M	1
	SequenceNumber A number to identify the change or revision against an order. The first change submitted for an order would have a value of 1, the second 2, and so on.	string	O	1
	SpecialInvoicePreference A code indicating any special invoice requirements. InvoiceNotRequired Other	string	O	1
	PrimaryCurrency The currency code indicating the currency to be used for the transaction.		O	1
	SecondCurrency The currency code indicating a second currency, such as for European countries using the Euro and a local currency.		O	1
	LanguageCode A code indicating the language used for the transaction. Use the codelist from ISO 639-2:1998 Codes for the representation of names of languages – Part 2: Alpha-3 Code.	string	O	1
	JobLocationInformation A collection of elements giving details of a job location.		O	1
	ServiceDateTime The actual and/or schedule dates for a service.	datetime	O	U
	CountryOfOrigin The country where product originates or is deemed to have originated.		O	1
	CountryOfFinalDestination The country where product is ultimately delivered or is deemed to have been delivered.		O	1
	TransportInformation A code indicating the mode of transportation used to move product.		O	1
	PaymentTerms A collection of elements detailing payment terms information.		O	1
	CreditCardInformation A collection of elements defining the details of a credit card.		O	1
	SpecialInstructions A free-form textual description of special requirements.	string	O	U

	<p>ReferenceInformation O U</p> <p>A collection of elements detailing references to information that reside outside of the current transaction message.</p> <p>Attachment O U</p> <p>A collection of elements defining the details of an attachment to the document.</p> <p>Comment string O 1</p> <p>A free-form textual structure for general information or comments.</p>
parent(s)	OrderChange

OrderChangeDetails

A collection of elements defining the details of the Order Create message.

note		Type	Use	Max
children	Name OrderChangeLineItem A collection of elements defining the details of the line items making up the change order.		M	U
parent(s)	OrderChange			

OrderChangeLineItem

A collection of elements defining the details of the line items making up the change order.

note		Type	Use	Max
children	Name			
	LineItemNumber	string	M	1
	A sequential individual line identifier within a document containing service or item information.			
	ItemDetailChangeCode	string	M	1
	A code identifying the type of change to the line item.			
	Add			
	Delete			
	ModifyPrice			
	ModifyQuantity			
	ModifyLocation			
	ModifyPartner			
	ModifyPaymentTerms			
	ModifyTransportInformation			
	ModifyScheduleDates			
	ModifyOther			
	LineItemInformation		M	1
	A collection of elements detailing identifying information about a line item.			
	OrderQuantity		M	1
	The number of units of an item or service ordered.			
	CommodityCode	string	O	U
	A code indicating the categorization of a product or service in accordance with a particular standard.			
	PurchaseOrderLineItemNumber	string	O	1
	A sequential individual line identifier within a purchase order document containing product or item information.			
	PurchaseOrderInformation		O	1
	A collection of elements containing relevant purchase order information which needs to be referenced within other documentation and/or messages.			
	PartnerInformation		O	U
	A collection of elements detailing partner information.			
	JobLocationInformation		O	1
	A collection of elements giving details of a job location.			
	Pricing		O	1
	A collection of elements detailing price information.			
	AllowanceOrCharge		O	U
	A collection of elements defining the details of an allowance or charge to the customer.			
	Tax		O	U
	A collection of elements detailing information about tax applied to a transaction.			
	LineItemTotal		O	1
	The net total monetary amount for the line item.			
	ServiceDateTime	datetime	O	U
	The actual and/or schedule dates for a service.			

	<p><u>CountryOfOrigin</u> O 1</p> <p>The country where product originates or is deemed to have originated.</p> <p><u>CountryOfFinalDestination</u> O 1</p> <p>The country where product is ultimately delivered or is deemed to have been delivered.</p> <p><u>TransportInformation</u> O 1</p> <p>A code indicating the mode of transportation used to move product.</p> <p><u>PaymentTerms</u> O 1</p> <p>A collection of elements detailing payment terms information.</p> <p><u>CreditCardInformation</u> O 1</p> <p>A collection of elements defining the details of a credit card.</p> <p><u>SpecialInstructions</u> string O U</p> <p>A free-form textual description of special requirements.</p> <p>PackagingCharacteristicCode string O U</p> <p>A code indicating the marking, packaging, loading and related characteristics being described.</p> <p>PackageSpecifications</p> <p>ProductMarking</p> <p>SkidPalletType</p> <p>TypeOfPackage</p> <p>Other</p> <p>PackagingCharacteristicDescription string O U</p> <p>Free-form text providing any additional information associated with the Packaging Characteristic Code.</p> <p><u>ReferenceInformation</u> O U</p> <p>A collection of elements detailing references to information that reside outside of the current transaction message.</p> <p><u>Attachment</u> O U</p> <p>A collection of elements defining the details of an attachment to the document.</p> <p>Comment string O 1</p> <p>A free-form textual structure for general information or comments.</p> <p><u>OrderChangeSubLineItem</u> O U</p> <p>A collection of elements defining the details of the sub line items of a change order. It is used if a line item needs to be broken down into further detail.</p>
parent(s)	<p><u>OrderChangeDetails</u></p>

OrderChangeSubLinItem

A collection of elements defining the details of the sub line items of a change order. It is used if a line item needs to be broken down into further detail.

note		Type	Use	Max	
children	Name				
	SubLinItemNumber	string	M	1	
	The sub-line item number relating to the primary line item referenced in the message.				
	<u>ItemDetailChangeCode</u>	string	M	1	
	A code identifying the type of change to the line item.				
	Add				
	Delete				
	ModifyPrice				
	ModifyQuantity				
	ModifyLocation				
	ModifyPartner				
	ModifyPaymentTerms				
	ModifyTransportInformation				
	ModifyScheduleDates				
	ModifyOther				
	<u>LinItemInformation</u>			M	1
	A collection of elements detailing identifying information about a line item.				
	<u>OrderQuantity</u>			M	1
	The number of units of an item or service ordered.				
	<u>CommodityCode</u>	string	O		U
A code indicating the categorization of a product or service in accordance with a particular standard.					
PurchaseOrderSubLinItemNumber	string	O		1	
A sequential individual sub-line identifier within an Order Create document containing product or item information that relates back to a parent line item.					
<u>PurchaseOrderInformation</u>			O	1	
A collection of elements containing relevant purchase order information which needs to be referenced within other documentation and/or messages.					
<u>PartnerInformation</u>			O	U	
A collection of elements detailing partner information.					
<u>JobLocationInformation</u>			O	1	
A collection of elements giving details of a job location.					
<u>Pricing</u>			O	1	
A collection of elements detailing price information.					
<u>AllowanceOrCharge</u>			O	U	
A collection of elements defining the details of an allowance or charge to the customer.					
<u>Tax</u>			O	U	
A collection of elements detailing information about tax applied to a transaction.					
<u>LinItemTotal</u>			O	1	
The net total monetary amount for the line item.					
<u>ServiceDateTime</u>	datetime	O		U	
The actual and/or schedule dates for a service.					

	CountryOfOrigin		O	1
	The country where product originates or is deemed to have originated.			
	CountryOfFinalDestination		O	1
	The country where product is ultimately delivered or is deemed to have been delivered.			
	TransportInformation		O	1
	A code indicating the mode of transportation used to move product.			
	PaymentTerms		O	1
	A collection of elements detailing payment terms information.			
	CreditCardInformation		O	1
	A collection of elements defining the details of a credit card.			
	SpecialInstructions	string	O	U
	A free-form textual description of special requirements.			
	PackagingCharacteristicCode	string	O	U
	A code indicating the marking, packaging, loading and related characteristics being described.			
	PackageSpecifications			
	ProductMarking			
	SkidPalletType			
	TypeOfPackage			
	Other			
	PackagingCharacteristicDescription	string	O	U
	Free-form text providing any additional information associated with the Packaging Characteristic Code.			
	ReferenceInformation		O	U
	A collection of elements detailing references to information that reside outside of the current transaction message.			
	Attachment		O	U
	A collection of elements defining the details of an attachment to the document.			
	Comment	string	O	1
	A free-form textual structure for general information or comments.			
parent(s)	OrderChangeLineItem			

OrderChangeSummary

A collection of elements detailing the totals of the change order.

note				
children	Name	Type	Use	Max
	TotalLineItems	integer	M	1
	The total number of line items contained in a message.			
	TotalAmount		O	1
	The total monetary amount of an order.			
parent(s)	OrderChange			

AddressInformation

A collection of elements defining the details of an address.

note				
level	OrderChangeProperties OrderChangeDetails			
children	<p>Name</p> <p>POBoxNumber The identity of a physical box within a postal facility to accept and receive mail.</p> <p>BuildingHouseNumber The alphanumeric identifier of a building as a part of an address.</p> <p>StreetName The name of a street as part of an address.</p> <p>AddressLine An occurrence of a generally accepted formatted line of data such that when combined with the entire address structure there is sufficient information for delivery or location purposes.</p> <p>CityName The name of the city or municipality.</p> <p>StateProvince The name of the municipality or town as a location for mailing, siting and other geographic functions.</p> <p>PostalCode The code assigned by local postal authorities to delivery addresses.</p> <p>PostalCountry The country code indicating the country to which mail should be delivered.</p> <p>CountyName The name of the county.</p> <p>LocationIdentifier A unique identifier for a physical location.</p>	Type	Use	Max
		string	O	1
		string	O	1
		string	O	1
		string	O	U
		string	O	1
		string	O	1
		string	O	1
		string	O	1
		string	O	1
parent(s)	JobLocationInformation Location PartnerInformation TaxLocation			

attributes	Name	Type	Use	Fixed
	allowanceOrChargeIndicator A code to indicate whether the information relates to an allowance or charge. Allowance Charge Other	string	M	

AllowanceOrChargePercent

The allowance or charge expressed as a percentage.

note				
level	OrderChangeDetails			
parent(s)	AllowanceOrCharge			
attributes	Name	Type	Use	Fixed
	percentIndicator	string	O	
	A code indicating on what basis the allowance or charge percent is calculated.			

AllowanceOrChargeQuantity

The quantity on which the allowance or charge is based if it is different from the purchase order or invoice quantity.

note				
level	OrderChangeDetails			
children	Name	Type	Use	Max
	Quantity	decimal	M	1
	A numeric count of measure.			
	UnitOfMeasureCode	string	M	1
	A code identifying the units in which measurement is expressed.			
parent(s)	AllowanceOrCharge			

AllowanceOrChargeRate

The rate per unit of the allowance or charge.

note				
level	OrderChangeDetails			
children	Name	Type	Use	Max
	MonetaryAmount	decimal	M	1
	The currency value of a transaction or item.			
	UnitOfMeasureCode	string	M	1
	A code identifying the units in which measurement is expressed.			
	CurrencyCode	string	O	1
	A code indicating the currency in which the monetary amount is specified.			
	Use the codelist from ISO 4217:2001 Codes for the representation of currencies and funds.			
parent(s)	AllowanceOrCharge			

AllowanceOrChargeTotalAmount

The total monetary amount for the allowance or charge.

note				
level	OrderChangeDetails			
children	Name	Type	Use	Max
	MonetaryAmount	decimal	M	1
	The currency value of a transaction or item.			
	CurrencyCode	string	O	1
	A code indicating the currency in which the monetary amount is specified.			
	Use the codelist from ISO 4217:2001 Codes for the representation of currencies			

	and funds.
parent(s)	AllowanceOrCharge

AlternativeCommunicationMethod

Additional methods of communication, such as an IP Address or Printer ID, in addition to those specifically listed elsewhere in contact or address information.

note																																																									
level	OrderChangeProperties OrderChangeDetails																																																								
parent(s)	ContactInformation																																																								
attributes	<table border="1"> <thead> <tr> <th>Name</th> <th>Type</th> <th>Use</th> <th>Fixed</th> </tr> </thead> <tbody> <tr> <td>alternativeCommunicationMethodIndicator</td> <td>string</td> <td>M</td> <td></td> </tr> <tr> <td colspan="4">A code to indicate the type of alternative communication method.</td> </tr> <tr> <td>AUTOVON</td> <td></td> <td></td> <td></td> </tr> <tr> <td>EDIAccessNumber</td> <td></td> <td></td> <td></td> </tr> <tr> <td>FederalTelecommunicationsSystem</td> <td></td> <td></td> <td></td> </tr> <tr> <td>IPAddress</td> <td></td> <td></td> <td></td> </tr> <tr> <td>PacketSwitching</td> <td></td> <td></td> <td></td> </tr> <tr> <td>PrinterID</td> <td></td> <td></td> <td></td> </tr> <tr> <td>StationCode</td> <td></td> <td></td> <td></td> </tr> <tr> <td>Telemail</td> <td></td> <td></td> <td></td> </tr> <tr> <td>Telex</td> <td></td> <td></td> <td></td> </tr> <tr> <td>TWX</td> <td></td> <td></td> <td></td> </tr> <tr> <td>Other</td> <td></td> <td></td> <td></td> </tr> </tbody> </table>	Name	Type	Use	Fixed	alternativeCommunicationMethodIndicator	string	M		A code to indicate the type of alternative communication method.				AUTOVON				EDIAccessNumber				FederalTelecommunicationsSystem				IPAddress				PacketSwitching				PrinterID				StationCode				Telemail				Telex				TWX				Other			
Name	Type	Use	Fixed																																																						
alternativeCommunicationMethodIndicator	string	M																																																							
A code to indicate the type of alternative communication method.																																																									
AUTOVON																																																									
EDIAccessNumber																																																									
FederalTelecommunicationsSystem																																																									
IPAddress																																																									
PacketSwitching																																																									
PrinterID																																																									
StationCode																																																									
Telemail																																																									
Telex																																																									
TWX																																																									
Other																																																									

Attachment

A collection of elements defining the details of an attachment to the document.

note																																																													
level	OrderChangeProperties OrderChangeDetails																																																												
children	<table border="1"> <thead> <tr> <th>Name</th> <th>Type</th> <th>Use</th> <th>Max</th> </tr> </thead> <tbody> <tr> <td>AttachmentPurposeCode</td> <td>string</td> <td>O</td> <td>1</td> </tr> <tr> <td colspan="4">A code to indicate the purpose of the attachment.</td> </tr> <tr> <td>Template</td> <td></td> <td></td> <td></td> </tr> <tr> <td>Other</td> <td></td> <td></td> <td></td> </tr> <tr> <td>FileName</td> <td>string</td> <td>O</td> <td>1</td> </tr> <tr> <td colspan="4">The name of the file in an attachment.</td> </tr> <tr> <td>AttachmentTitle</td> <td>string</td> <td>O</td> <td>1</td> </tr> <tr> <td colspan="4">The title of the attachment.</td> </tr> <tr> <td>AttachmentDescription</td> <td>string</td> <td>O</td> <td>1</td> </tr> <tr> <td colspan="4">A free-form textual description of the attachment.</td> </tr> <tr> <td>FileType</td> <td>string</td> <td>O</td> <td>1</td> </tr> <tr> <td colspan="4">The type of the file in an attachment.</td> </tr> <tr> <td>AttachmentLocation</td> <td>string</td> <td>O</td> <td>1</td> </tr> <tr> <td colspan="4">The location of the attachment, such as a URL.</td> </tr> </tbody> </table>	Name	Type	Use	Max	AttachmentPurposeCode	string	O	1	A code to indicate the purpose of the attachment.				Template				Other				FileName	string	O	1	The name of the file in an attachment.				AttachmentTitle	string	O	1	The title of the attachment.				AttachmentDescription	string	O	1	A free-form textual description of the attachment.				FileType	string	O	1	The type of the file in an attachment.				AttachmentLocation	string	O	1	The location of the attachment, such as a URL.			
Name	Type	Use	Max																																																										
AttachmentPurposeCode	string	O	1																																																										
A code to indicate the purpose of the attachment.																																																													
Template																																																													
Other																																																													
FileName	string	O	1																																																										
The name of the file in an attachment.																																																													
AttachmentTitle	string	O	1																																																										
The title of the attachment.																																																													
AttachmentDescription	string	O	1																																																										
A free-form textual description of the attachment.																																																													
FileType	string	O	1																																																										
The type of the file in an attachment.																																																													
AttachmentLocation	string	O	1																																																										
The location of the attachment, such as a URL.																																																													
parent(s)	OrderChangeLineItem OrderChangeProperties OrderChangeSubLineItem																																																												

Block

A collection of elements defining the details of a block, which identifies a location.

note				
level	OrderChangeProperties OrderChangeDetails			
children	Name BlockName The name of the block, which identifies a location. OCSGNumber The Outer Continental Shelf Gulf number. StateLease Lease on state land.	Type string string string	Use 0 0 0	Max 1 1 1
parent(s)	GeographicalInformation			

CommodityCode

A code indicating the categorization of a product or service in accordance with a particular standard.

note				
level	OrderChangeDetails			
parent(s)	OrderChangeLineItem OrderChangeSubLineItem			
attributes	Name agencyIndicator A code indicating what agency or organization is responsible for defining the commodity code list.	Type string	Use 0	Fixed

ContactIdentifier

The identifier of the contact person or department.

note				
level	OrderChangeProperties OrderChangeDetails			
parent(s)	ContactInformation			
attributes	Name contactIdentifierIndicator A code to identify the origin of the contact identifier. AssignedByBuyer AssignedBySeller EmployeeID Other	Type string	Use 0	Fixed

ContactInformation

A collection of elements defining details of communication for a contact person.

note	• It is recommended that ContactInformation be used at either the Property or Detail level, but not both.			
level	OrderChangeProperties OrderChangeDetails			
children	Name	Type	Use	Max
	ContactIdentifier	string	O	1
	The identifier of the contact person or department.			
	ContactName	string	O	1
	The name of the contact person within the organization.			
	ContactDescription	string	O	1
	A free-form textual description of the contact.			
Telephone			O	U
A collection of elements detailing information about a telephone number.				
EmailAddress	string	O	1	
The address assigned to a person or organization to receive electronic messages.				
AlternativeCommunicationMethod	string	O	U	
Additional methods of communication, such as an IP Address or Printer ID, in addition to those specifically listed elsewhere in contact or address information.				
parent(s)	PartnerInformation			
attributes	Name	Type	Use	Fixed
	contactInformationIndicator	string	M	
	A code indicating the function of the contact.			
	BuyerDepartment			
	DeliveryContact			
	DesignEngineer			
	Engineer			
	EnteredBy			
	FieldRepresentative			
	OfficeRepresentative			
	OrderContact			
	PurchasingAgent			
	QuotePreparer			
	QuoteRequestor			
	RFQContact			
	SalesRepresentative			
	ServiceCoordinator			
TechnicalMarketingRepresentative				
Other				

CountryOfFinalDestination

The country where product is ultimately delivered or is deemed to have been delivered.

note				
level	OrderChangeProperties OrderChangeDetails			
children	Name	Type	Use	Max

	<p>CountryCode string M 1</p> <p>A code indicating a country.</p> <p>Use the codelist from ISO 3166-1:1997 Codes for the representation of names of countries and their subdivisions – Part 1: Country Codes.</p>
parent(s)	<p>OrderChangeLineItem</p> <p>OrderChangeProperties</p> <p>OrderChangeSubLineItem</p>

CountryOfOrigin

The country where product originates or is deemed to have originated.

note				
level	OrderChangeProperties OrderChangeDetails			
children	<p>Name</p> <p>CountryCode</p> <p>A code indicating a country.</p> <p>Use theodelist from ISO 3166-1:1997 Codes for the representation of names of countries and their subdivisions – Part 1: Country Codes.</p>	<p>Type</p> <p>string</p>	<p>Use</p> <p>M</p>	<p>Max</p> <p>1</p>
parent(s)	OrderChangeLineItem OrderChangeProperties OrderChangeSubLineItem			

CreditCardInformation

A collection of elements defining the details of a credit card.

note				
level	OrderChangeProperties OrderChangeDetails			
children	<p>Name</p> <p>CreditCardNumber</p> <p>The number identifying the credit card account.</p> <p>CardHolderName</p> <p>The name of the party to whom the credit card is registered.</p> <p>CreditCardType</p> <p>The type of credit card as generally identified by financial institutions.</p> <p>CreditCardExpirationDate</p> <p>The date upon which a credit card expires and is no longer valid.</p> <p>Format is CCYY-MM-DD where "CC" represents the century, "YY" the year, "MM" the month and "DD" the day.</p> <p>CardAuthorizationCode</p> <p>The authorization number assigned to a transaction against a credit card.</p> <p>CardReferenceNumber</p> <p>A customer reference number which is used to enable transmission of customer specific information with the card.</p>	<p>Type</p> <p>integer</p> <p>string</p> <p>string</p> <p>date</p> <p>string</p> <p>string</p>	<p>Use</p> <p>M</p> <p>O</p> <p>O</p> <p>O</p> <p>O</p> <p>O</p>	<p>Max</p> <p>1</p> <p>1</p> <p>1</p> <p>1</p> <p>1</p>
parent(s)	OrderChangeLineItem OrderChangeProperties OrderChangeSubLineItem			

Deferred

The terms for a deferred payment in relation to a transaction.

note				
level	OrderChangeProperties OrderChangeDetails			
children	Name DeferredAmount The monetary amount that is deferred for payment based upon terms in an invoice, contract or agreement. DeferredDueDate The date upon which a deferred payment is due. Format is CCYY-MM-DD where "CC" represents the century, "YY" the year, "MM" the month and "DD" the day. PercentDeferredPayable The amount due that is deferred for payment expressed as a percentage. Description A free-form textual explanation or clarification.	Type date decimal string	Use O O O	Max 1 1 1
parent(s)	PaymentTerms			

DeferredAmount

The monetary amount that is deferred for payment based upon terms in an invoice, contract or agreement.

note				
level	OrderChangeProperties OrderChangeDetails			
children	Name MonetaryAmount The currency value of a transaction or item. CurrencyCode A code indicating the currency in which the monetary amount is specified. Use the codelist from ISO 4217:2001 Codes for the representation of currencies and funds.	Type decimal string	Use M O	Max 1 1
parent(s)	Deferred			

DiscountAmount

The monetary amount of a discount based upon payment terms.

note				
level	OrderChangeProperties OrderChangeDetails			
children	Name MonetaryAmount The currency value of a transaction or item. CurrencyCode A code indicating the currency in which the monetary amount is specified. Use the codelist from ISO 4217:2001 Codes for the representation of currencies and funds.	Type decimal string	Use M O	Max 1 1
parent(s)	Discounts			

Discounts

The monetary amount allowed or applied as a credit against a transaction or balance.

note				
level	OrderChangeProperties OrderChangeDetails			
children	<p>Name</p> <p>DaysDue The number of days from the payment terms basis date before a discount expires.</p> <p>DiscountsDueDate The date upon which a discount expires. Format is CCYY-MM-DD where "CC" represents the century, "YY" the year, "MM" the month and "DD" the day.</p> <p>PercentDiscount A discount to be applied to the transaction expressed as a percentage.</p> <p>DiscountAmount The monetary amount of a discount based upon payment terms.</p> <p>Description A free-form textual explanation or clarification.</p>	<p>Type</p> <p>integer</p> <p>date</p> <p>decimal</p> <p>string</p>	<p>Use</p> <p>O</p> <p>O</p> <p>O</p> <p>O</p>	<p>Max</p> <p>1</p> <p>1</p> <p>1</p> <p>1</p>
parent(s)	PaymentTerms			

EffectiveDates

The period of time (or range) where the information is valid or guaranteed.

note				
level	OrderChangeProperties OrderChangeDetails			
children	<p>Name</p> <p>FromDate The date upon which a time period begins. Format is CCYY-MM-DD where "CC" represents the century, "YY" the year, "MM" the month and "DD" the day.</p> <p>ToDate The date upon which a time period ends. Format is CCYY-MM-DD where "CC" represents the century, "YY" the year, "MM" the month and "DD" the day.</p>	<p>Type</p> <p>date</p> <p>date</p>	<p>Use</p> <p>M</p> <p>M</p>	<p>Max</p> <p>1</p> <p>1</p>
parent(s)	TaxInformation			

GeographicalInformation

A collection of elements defining a geographical location.

note	• If any one of Section, Township, or Range is given then the other two are required.			
level	OrderChangeProperties OrderChangeDetails			
children	Name The name of the oil field. FieldName string O 1 Section A part of Section/Township/Range location identifier scheme. string O 1 Township A part of Section/Township/Range location identifier scheme. string O 1 Range A part of Section/Township/Range location identifier scheme. string O 1 Region The name of a geographic region. string O 1 Block A collection of elements defining the details of a block, which identifies a location. O 1 GPSCoordinates A collection of elements containing latitude and longitude data for a specific location. O 1	Type	Use	Max
parent(s)	JobLocationInformation Location			

GPSCoordinates

A collection of elements containing latitude and longitude data for a specific location.

note				
level	OrderChangeProperties OrderChangeDetails			
children	Name Latitude The specified latitude of a location. string M 1 Longitude The specified longitude of a location. string M 1	Type	Use	Max
parent(s)	GeographicalInformation			

HazardousMaterialClassCode

A code indicating the kind of hazard for a material.

note				
level	OrderChangeProperties OrderChangeDetails			
parent(s)	HazardousMaterials			
attributes	Name hazardousMaterialIndicator A code which qualifies the Hazardous Material Class Code. string M	Type	Use	Fixed

HazardousMaterials

A collection of elements conveying hazardous goods information related to a product.

note	• If HazardousMaterials is used, then at least one of SpecialHandlingCode or HazardousMaterialDescription is required.			
level	OrderChangeProperties OrderChangeDetails			
children	Name	Type	Use	Max
	SpecialHandlingCode	string	O	1
	A code identifying any special transportation handling instructions			
	HazardousMaterialDescription	string	O	1
	A free-form textual explanation of information related to a hazardous shipment.			
	HazardousMaterialClassCode	string	O	U
	A code indicating the kind of hazard for a material.			
parent(s)	TransportInformation			

JobLocationIdentifier

A unique identifier referencing the job location.

note				
level	OrderChangeProperties OrderChangeDetails			
parent(s)	JobLocationInformation			
attributes	Name	Type	Use	Fixed
	jobLocationIdentifierIndicator	string	O	
	A code to define what type of location the identifier is referencing.			
	ChemicalPlant			
	Coal-Degas			
	CogenerationPlant			
	Construction			
	Dock			
	GasPlant			
	IndustrialServiceMiscellaneous			
	MilitaryGovernment			
	PaperMill			
	PetroleumPlant			
	Pipeline			
	Refinery			
	Rig			
	UtilityPlant			
	Other			

	OrderChangeSubLineItem
--	--

LinItemIdentifier

The unique identifier for a product or service making up the line item.

note				
level	OrderChangeDetails			
parent(s)	LinItemInformation			
attributes	Name	Type	Use	Fixed
	identifierIndicator	string	M	
	A code to indicate the origin of the identifier.			
	AssignedByBuyer			
	AssignedByManufacturer			
	AssignedBySeller			
	CatalogueNumber			
	UPCNumber			
	Other			

LinItemInformation

A collection of elements detailing identifying information about a line item.

note				
level	OrderChangeDetails			
children	Name	Type	Use	Max
	LinItemIdentifier	string	O	U
	The unique identifier for a product or service making up the line item.			
	LinItemName	string	O	1
	The name of the product or service in the line item.			
	LinItemDescription	string	O	1
	A free-form textual description of the line item.			
	ManufacturerIdentifier	string	O	1
	A unique identifier for a manufacturer.			
parent(s)	OrderChangeLinItem OrderChangeSubLinItem			

LinItemTotal

The net total monetary amount for the line item.

note				
level	OrderChangeDetails			
children	Name	Type	Use	Max
	MonetaryAmount	decimal	M	1
	The currency value of a transaction or item.			
	CurrencyCode	string	O	1
	A code indicating the currency in which the monetary amount is specified.			
	Use the codelist from ISO 4217:2001 Codes for the representation of currencies and funds.			
parent(s)	OrderChangeLinItem OrderChangeSubLinItem			

Location

A collection of elements giving details about a location.

note				
level	OrderChangeProperties OrderChangeDetails			
children	Name LocationIdentifier A unique identifier for a physical location. LocationName The name of the location being referenced. AddressInformation A collection of elements defining the details of an address. GeographicalInformation A collection of elements defining a geographical location. LocationDescription Free-form textual description of the location.	Type string string string	Use O O O O	Max 1 1 1
parent(s)	TransportInformation			
attributes	Name locationIndicator A code to identify what kind of location is being referenced. FreightEqualizationPoint OnVessel-FOBPoint AssignedBySeller Origin-AfterLoadingOnEquipment Origin-ShippingPoint Plant ShippingDestination Warehouse Other	Type string	Use O	Fixed

MeasurementRange

A collection of elements providing a minimum and maximum measurement to create a range.

note				
level	OrderChangeProperties OrderChangeDetails			
children	Name MinimumMeasurement The smallest measurement in a given range. MaximumMeasurement The largest measurement in a given range.	Type decimal decimal	Use M M	Max 1 1
parent(s)	PriceBasis			

OrderQuantity

The number of units of an item or service ordered.

note				
level	OrderCreateDetails OrderResponse OrderResponseDetails OrderChangeDetails			
children	Name Quantity A numeric count of measure. UnitOfMeasureCode A code identifying the units in which measurement is expressed.	Type decimal string	Use M M	Max 1 1
parent(s)	OrderChangeLineItem OrderChangeSubLineItem OrderCreateLineItem OrderCreateSubLineItem OrderResponseLineItem OrderResponseSubLineItem			

PartnerIdentifier

A unique identifier indicating a particular partner or organization.

note				
level	OrderChangeProperties OrderChangeDetails			
parent(s)	PartnerInformation			
attributes	Name partnerIdentifierIndicator A code to identify the origin of the Partner Identifier. AssignedByBuyer AssignedBySeller DUNSNumber DUNS+4Number Other	Type string	Use M	Fixed

PartnerInformation

A collection of elements detailing partner information.

note				
level	OrderChangeProperties OrderChangeDetails			
children	<p>Name</p> <p>PartnerIdentifier</p> <p>A unique identifier indicating a particular partner or organization.</p> <p>PartnerName</p> <p>The name of the organization being referenced in Partner Information.</p> <p>AddressInformation</p> <p>A collection of elements defining the details of an address.</p> <p>ContactInformation</p> <p>A collection of elements defining details of communication for a contact person.</p> <p>TaxInformation</p> <p>A collection of elements detailing tax information about a partner.</p> <p>URL</p> <p>A Uniform Resource Locator indicating an internet address.</p>	<p>Type</p> <p>string</p> <p>string</p> <p>string</p> <p>string</p> <p>string</p> <p>string</p> <p>string</p>	<p>Use</p> <p>M</p> <p>O</p> <p>O</p> <p>O</p> <p>O</p> <p>O</p>	<p>Max</p> <p>U</p> <p>1</p> <p>1</p> <p>U</p> <p>1</p> <p>1</p>
parent(s)	OrderChangeLineItem OrderChangeProperties OrderChangeSubLineItem TransportInformation			
attributes	<p>Name</p> <p>partnerRoleIndicator</p> <p>A code to indicate the role in this transaction of the partner being referenced.</p> <p>BillAndShipTo</p> <p>BillTo</p> <p>Carrier</p> <p>CommissionPayee</p> <p>FinalRecipient</p> <p>Manufacturer</p> <p>Marketplace</p> <p>MaterialIssuer</p> <p>OnsiteContractingCompany</p> <p>OperatingCompany</p> <p>Payer</p> <p>PrimaryContractor</p> <p>RemitTo</p> <p>Seller</p> <p>ShipFromParty</p> <p>ShipToParty</p> <p>SoldTo</p> <p>ThirdParty</p> <p>Vendor</p> <p>Warehouse</p> <p>Other</p>	<p>Type</p> <p>string</p>	<p>Use</p> <p>M</p>	<p>Fixed</p>

PaymentTerms

A collection of elements detailing payment terms information.

note	<ul style="list-style-type: none"> • If either one of PercentDiscount or DiscountAmount is used, then at least one of DiscountsDueDate or DaysDue is required. • If DeferredDueDate is used, then at least one of DeferredAmountDue or PercentOfInvoicePayable is required. 			
level	OrderChangeProperties OrderChangeDetails			
children	<p>Name</p> <p>PaymentTermsOfSale</p> <p>The terms on which payment is calculated for the transaction.</p> <p>Description</p> <p>A free-form textual explanation or clarification.</p> <p>PaymentTermsBasisDateCode</p> <p>A code identifying the beginning of the terms period.</p> <p>DeliveryDate</p> <p>InvoiceDate</p> <p>InvoiceReceiptDate</p> <p>Other</p> <p>PaymentTermsBasisDate</p> <p>The date from which payment terms or discounts are calculated or based.</p> <p>Format is CCYY-MM-DD where "CC" represents the century, "YY" the year, "MM" the month and "DD" the day.</p> <p>TermsNetDays</p> <p>The number of days until the total invoice amount is due (discount not applicable).</p> <p>PercentOfInvoicePayable</p> <p>The amount of an invoice payable expressed as a percentage.</p> <p>Discounts</p> <p>The monetary amount allowed or applied as a credit against a transaction or balance.</p> <p>Deferred</p> <p>The terms for a deferred payment in relation to a transaction.</p> <p>Penalty</p> <p>A percentage used to calculate the penalty on any balance unpaid by the due date.</p>	Type	Use	Max
		string	O	1
		string	O	1
		string	O	1
		date	O	1
		integer	O	1
		decimal	O	1
			O	1
			O	1
		string	O	1
parent(s)	OrderChangeLineItem OrderChangeProperties OrderChangeSubLineItem			

PostalCountry

The country code indicating the country to which mail should be delivered.

note				
level	OrderChangeProperties OrderChangeDetails			
children	<p>Name</p> <p>CountryCode</p> <p>A code indicating a country.</p> <p>Use the codelist from ISO 3166-1:1997 Codes for the representation of names of countries and their subdivisions – Part 1: Country Codes.</p>	Type	Use	Max
		string	M	1

parent(s)	AddressInformation
-----------	------------------------------------

PriceBasis

A structure allowing for a price to be based on more than just a single unit of measure.

note				
level	OrderChangeDetails			
children	<p>Name</p> <p>Measurement A numeric value for technical or attribute data.</p> <p>MeasurementRange A collection of elements providing a minimum and maximum measurement to create a range.</p> <p>UnitOfMeasureCode A code identifying the units in which measurement is expressed.</p> <p>BasisDescription Free-form textual description of the basis.</p>	<p>Type</p> <p>decimal</p> <p>string</p> <p>string</p>	<p>Use</p> <p>O</p> <p>O</p> <p>M</p> <p>O</p>	<p>Max</p> <p>1</p> <p>1</p> <p>1</p> <p>1</p>
parent(s)	Pricing			

Pricing

A collection of elements detailing price information.

note				
level	OrderChangeDetails			
children	<p>Name</p> <p>UnitPrice The unit price of the product or service being sold.</p> <p>PriceBasis A structure allowing for a price to be based on more than just a single unit of measure.</p>	<p>Type</p>	<p>Use</p> <p>M</p> <p>O</p>	<p>Max</p> <p>1</p> <p>U</p>
parent(s)	OrderChangeLineItem OrderChangeSubLineItem			

PrimaryCurrency

The currency code indicating the currency to be used for the transaction.

note				
level	OrderChangeProperties			
children	<p>Name</p> <p>CurrencyCode A code indicating the currency in which the monetary amount is specified. Use the codelist from ISO 4217:2001 Codes for the representation of currencies and funds.</p>	<p>Type</p> <p>string</p>	<p>Use</p> <p>M</p>	<p>Max</p> <p>1</p>
parent(s)	OrderChangeProperties			

ReferenceInformation

A collection of elements detailing references to information that reside outside of the current transaction message.

note	• It is recommended that ReferenceInformation be used at either the Property or Detail level, but not both.			
level	OrderChangeProperties OrderChangeDetails			
children	Name	Type	Use	Max
	ReferenceNumber A number or identifier that is used to reference documents or information not included within a particular message. The referenceInformationIndicator attribute qualifies what this number references Description A free-form textual explanation or clarification.	string	M	1
children	Name	Type	Use	Max
	Description A free-form textual explanation or clarification.	string	O	1
parent(s)	OrderChangeLineItem OrderChangeProperties OrderChangeSubLineItem			
attributes	Name	Type	Use	Fixed
	referenceInformationIndicator A code to identify what type of information is being referenced. AFENumber BatchNumber BillOfLading Certification CertifiedInspectionTestResults ConfigurationNumber ContractNumber CostAllocationReference CostCenter CustomerAccountingReference CustomerReferenceNumber DeliveryTicketNumber DivisionIdentifier EngineeringChangeOrderNumber JobNumber LetterOfCreditNumber LocationNumber MaterialSafetyDataSheet OperatorGeneralLedgerCode OriginalInvoiceNumber PriceAreaNumber ProjectNumber ProposalNumber QuoteNumber RequestForQuotationNumber TemplateNumber Other	string	M	

SecondCurrency

The currency code indicating a second currency, such as for European countries using the Euro and a local currency.

note				
level	OrderChangeProperties			
children	<p>Name</p> <p>CurrencyCode</p> <p>A code indicating the currency in which the monetary amount is specified.</p> <p>Use the codelist from ISO 4217:2001 Codes for the representation of currencies and funds.</p>	Type	Use	Max
		string	M	1
parent(s)	OrderChangeProperties			

ServiceDateTime

The actual and/or schedule dates for a service.

note	<p>Format is CCYY-MM-DDThh:mm:ss where "CC" represents the century, "YY" the year, "MM" the month and "DD" the day. The letter "T" is the date/time separator and "hh", "mm", "ss" represent hour, minute and second respectively.</p> <p>The CCYY field must have at least four digits, the MM, DD, SS, hh, mm and ss fields exactly two digits each. Leading zeroes must be used if the field would otherwise have too few digits.</p> <p>If no time is to be given then use zeroes in the hh, mm and ss fields.</p> <p>This representation may be immediately followed by a "Z" to indicate Coordinated Universal Time (UTC) or, to indicate the time zone, i.e. the difference between the local time and Coordinated Universal Time, immediately followed by a sign, + or -, followed by the difference from UTC represented as hh:mm (note: the minutes part is required). For example, to indicate 1:20 pm on May the 31st, 1999 for Eastern Standard Time which is 5 hours behind Coordinated Universal Time (UTC), one would write: 1999-05-31T13:20:00-05:00.</p>			
level	OrderChangeProperties OrderChangeDetails			
parent(s)	OrderChangeLineItem OrderChangeProperties OrderChangeSubLineItem			
attributes	<p>Name</p> <p>dateTypeIndicator</p> <p>A code to identify which date being given.</p> <p>ArriveLocationDate</p> <p>InvoiceDueDate</p> <p>InvoicePeriodStartDate</p> <p>LeaveLocationDate</p> <p>PromisedForDelivery</p> <p>PromisedForShipment</p> <p>RequestedForDelivery</p> <p>RequestedForShipment</p> <p>ServicePeriodEnd</p> <p>ServicePeriodStart</p> <p>ShipDate</p> <p>Other</p>	Type	Use	Fixed
		string	M	

SpecialInstructions

A free-form textual description of special requirements.

note				
level	OrderChangeProperties OrderChangeDetails			
parent(s)	OrderChangeLineItem OrderChangeProperties OrderChangeSubLineItem			
attributes	Name instructionIndicator A code to identify the type of instruction being given. CarrierInstructions ConsigneeInstructions DriverInstructions EmptyReturnInstructions InspectionInstructions RoutingInstructions ShipperInstructions ShortLeadTime Tolerances Other	Type string	Use O	Fixed

TaxAmount

The monetary amount of the tax.

note				
level	OrderChangeDetails			
children	Name	Type	Use	Max
	MonetaryAmount	decimal	M	1
	The currency value of a transaction or item.			
	CurrencyCode	string	O	1
	A code indicating the currency in which the monetary amount is specified.			
	Use the codelist from ISO 4217:2001 Codes for the representation of currencies and funds.			
parent(s)	Tax			

TaxBasisAmount

The monetary amount which is subject to tax.

note				
level	OrderChangeDetails			
children	Name	Type	Use	Max
	MonetaryAmount	decimal	M	1
	The currency value of a transaction or item.			
	CurrencyCode	string	O	1
	A code indicating the currency in which the monetary amount is specified.			
	Use the codelist from ISO 4217:2001 Codes for the representation of currencies and funds.			
parent(s)	Tax			

TaxInformation

A collection of elements detailing tax information about a partner.

note				
level	OrderChangeProperties OrderChangeDetails			
children	Name	Type	Use	Max
	TaxIdentifierNumber	string	O	1
	A unique number or code issued to an organization by a governmental or regulatory body identifying that entity for tax purposes.			
	Jurisdiction	string	O	1
	The authority exercised by a nation, a judicial body, or a legislative body over persons, places, and property. Jurisdiction may apply to the territory over which a nation has control, including the land area, the adjacent sea, and the airspace above. It may also refer to the authority of an international body to make decisions binding on national entities.			
	TaxCertificateType	string	O	1
	The category of tax certificate for which an identifying number is issued.			
	TaxCertificateNumber	string	O	1
	The identifying number for a tax certificate such as tax exemption, sales and use tax certificate or other such document.			
parent(s)	PartnerInformation			

TaxLocation

The physical or deemed location at which tax is calculated based upon jurisdiction by a governmental or regulatory body.

note				
level	OrderChangeDetails			
children	Name	Type	Use	Max
	LocationIdentifier	string	O	1
	A unique identifier for a physical location.			
	LocationName	string	O	1
	The name of the location being referenced.			
children	LocationDescription	string	O	1
	Free-form textual description of the location.			
	AddressInformation		O	1
A collection of elements defining the details of an address.				
parent(s)	Tax			

Telephone

A collection of elements detailing information about a telephone number.

note				
level	OrderChangeProperties OrderChangeDetails			
children	Name	Type	Use	Max
	PhoneNumber	string	M	1
	A numerical sequence to reach a telephone attached to a communication network.			
	PhoneNumberExtension	string	O	1
	An extension number that is needed to further identify the phone number.			
children	TelecomCountryCode	string	O	1
	The dialing code from another country to access the telephone network in another country.			
	TelecomAreaCode	string	O	1
The area code within a country or jurisdiction, if needed, to access local telephones within the country.				
parent(s)	ContactInformation			
attributes	Name	Type	Use	Fixed
	telephoneIndicator	string	O	
	A code to indicate the type of phone number being given.			
	Fax			
	Mobile			
	Pager			
	Voice			
Other				

TotalAmount

The total monetary amount of an order.

note	
level	OrderChangeSummary

children	Name	Type	Use	Max
	MonetaryAmount The currency value of a transaction or item.	decimal	M	1
	CurrencyCode A code indicating the currency in which the monetary amount is specified. Use the codelist from ISO 4217:2001 Codes for the representation of currencies and funds.	string	O	1
parent(s)	OrderChangeSummary			

TransportInformation

A collection of elements detailing how product is transported.

note	• If TransportInformation is used, then at least one of TransportMethodCode, Routing, or ServiceLevelCode is required.			
level	OrderChangeProperties OrderChangeDetails			
children	Name	Type	Use	Max
	ShipmentMethodOfPayment A code indicating payment terms for transportation charges. Collect Collect-FreightCreditedBackToCustomer CustomerPickupBackhaul Pickup PrepaidBySeller Prepaid-ChargedToCustomer ServiceFreight-NoCharge ThirdPartyPay Other	string	M	1
	RoutingSequenceCode A code indicating the relationship of a carrier to a specific shipment movement. OriginCarrier-AirMotorOcean OriginDeliveryCarrier-AnyMode Other	string	O	1
	TransportMethodCode A code indicating the mode of transportation used to move product. Air AirExpress Barge BestWay-ShippersOption Boat CustomerPickup ExpeditedTruck Motor-CommonCarrier Ocean ParcelPost Rail SupplierTruck Truck Vessel Other	string	O	1
	PartnerInformation A collection of elements detailing partner information.		O	U
	Location A collection of elements giving details about a location.		O	U

	<p>ShipmentTermsCode A code indicating the terms under which a product is shipped, such as Freight Prepaid, FOB or similar.</p> <p>Routing A free-form description of the shipping route to be provided for transportation of product.</p> <p>ServiceLevelCode A code indicating the level of service required.</p> <p>HazardousMaterials A collection of elements conveying hazardous goods information related to a product.</p> <p>CarrierEquipmentCode A code indicating the kind of equipment parent(s) the carrier.</p> <p>TransportName The identifier of specific vessel, truck, railcar, etc.</p>	string	O	1
parent(s)	<p>OrderChangeLineItem</p> <p>OrderChangeProperties</p> <p>OrderChangeSubLineItem</p>			

UnitPrice

A collection of elements detailing how product is transported.

note				
level	OrderChangeDetails			
children	<p>Name</p> <p>MonetaryAmount The currency value of a transaction or item.</p> <p>UnitOfMeasureCode A code identifying the units in which measurement is expressed.</p> <p>CurrencyCode A code indicating the currency in which the monetary amount is specified. Use the codelist from ISO 4217:2001 Codes for the representation of currencies and funds.</p>	Type	Use	Max
		decimal	M	1
		string	M	1
		string	O	1
parent(s)	Pricing			

WellIdentifier

A unique identifier referencing a well, such as an API or UWI number.

note				
level	<p>OrderChangeProperties</p> <p>OrderChangeDetails</p>			
parent(s)	WellInformation			
attributes	<p>Name</p> <p>wellIdentifierIndicator A code to indicate the origin of the Well Identifier.</p> <p>APINumber</p> <p>CustomerNumber</p> <p>UWINumber</p> <p>Other</p>	Type	Use	Fixed
		string	O	

parent(s)	JobLocationInformation
-----------	--

Appendix A: PIDX XML Schema to PIDX "PIP" Number

PIDX XML Schema	New PIDX "PIP" Number for RNIF 2.0
FieldTicket	P11
FieldTicketResponse	P12
Invoice	P21
InvoiceResponse	P22
OrderChange	P32
OrderCreate	P31
OrderResponse	P33
Quote	P42
QuoteNotification	P43
QuoteRequest	P41
RequestRequisitionReturn	P51

Appendix B: GlobalPartnerRoleClassificationCode Values

This table extracted from the RosettaNet EntityInstances.htm document.

GlobalPartnerRoleClassificationCode	
Value	Definition
Financing Processor	The organization that processes the request for financing.
Product Provider	The partner role that creates a differentiated product, owns the registration process and creates a list of eligible products.
Credit Reference Requester	This partner role is responsible for requesting credit information about potential customers.
Account Supplier	Any trading partner that buys or sells products/services from customers and/or vendors.
Sales Marketing Claimant	The partner role that requests reimbursement from a Sales Marketing Claim Processor.
Sales Lead Processor	The party who receives the sales lead. This party is responsible for accepting or rejecting the lead, and if accepted, reports the status of the lead.
Sales Lead Originator	The party assigning a sales lead to another party.
Status Requester	The functional partner role, that could be a Product Provider, that creates a differentiated product, owns the registration process and creates a list of eligible products, or who is responsible for identifying the opportunity (that is, it could be a Demand Creator).
Payer	The party issuing a payment.
Status Responder	The organizational partner role, that could be a Product Provider, that creates a differentiated product, owns the registration process and creates a list of eligible products, or who is responsible for identifying the opportunity (that is, it could be a Demand Creator).
Return Receiver	A third-party or warehousing operation responsible for receiving returns, inspecting the package contents and comparing to the issued RMA to assure the contents are what was authorized on the RMA.
Return Provider	The party responsible for authorizing and/or processing the return.
Return Requester	Any party wishing to return a product. This role could be played by a large end-user such as the Government Services Administration (GSA), a distributor, or a reseller.
Authorizer	The partner role that provides product authorization, from a product owner or manufacturer, for a reselling organization to resell a product.
Anonymous Buyer	A requestor of information that chooses to remain anonymous.
Payee	The party receiving a payment.
Seller	An organization that sells products to partners in the supply chain.
Solution Provider	The party that may architect, configure, engineer, sell, or determine the fulfillment of the configured solution to partners in the supply chain.
Sales Marketing Program Reimbursor	The partner role that is currently processing a sales marketing claim, (or providing a payment without a claim submitted) and who provides information on the status of the claim processing.

GlobalPartnerRoleClassificationCode	
Value	Definition
Shipment Information User	The party who receives shipment status information.
Supplier	This partner role supplies product to customers in the supply chain.
Sales Facilitator	This partner role facilitates the sale of product between partners in the supply chain.
Product Supplier	This partner role supplies product to customers in the supply chain.
Customer	This partner role creates a demand for a product or service.
Credit Provider	This partner role is responsible for providing credit information about potential customers.
Customer Manager	This partner role manages the relationship with the business customers.
Specification Provider	The partner role that creates or passes on manufacturing specifications. This may be a Solution Provider, an OEM who is sub-contracting manufacturing tasks like fabrication or assembly, or another party.
Buyer	An employee or organization that buys products for a partner type in the supply chain.
Product Information User	The partner role that uses product information to create or update enterprise systems and online promotion systems such as electronic catalog systems.
Product Information Distributor	The partner role that distributes new product information to product information users and buyers.
Marketing Activity Initiator	The partner role that distributes information about marketing activities being sponsored by the organization.
Marketing Activity Information User	The party who uses information about Marketing Activities. This party might include distributors, and retail operations.
Sales Marketing Claim Processor	The partner role that processes the claim and/or remits compensation to the Sales Marketing Claimant.
Demand Creator	The partner role responsible for identifying the opportunity; submits design registration; provides engineering support to advance the opportunity to the higher stage towards design win and to generate revenue.
Product Information Subscriber	The business partner that subscribes to product information from other business partners.
ShipmentController	The party who is authorized to make decisions regarding a shipment while in-transit.
Catalog Distributor	The partner role that distributes catalog information to catalog producers and buyers.
Catalog Producer	The partner role that produces catalog information for a partner type in the supply chain.
Tender Information User	The stakeholder(s) in the tendering activity.
Account User	Any trading partner that requires an account to buy or sell products/services.
Shipper	The party who relinquishes a shipment to a Transport Service Provider.
Claim Requester	The owner of the shipments who is responsible for the intact delivery.

GlobalPartnerRoleClassificationCode	
Value	Definition
Transport Service Provider	The party that provides transportation services for a Shipment Requester.
In-transit Information User	The party who receives shipment status information.
Appointment Provider	The stakeholder(s) in the shipment delivery activity.
Consignee	The receiver of the shipment.
Decision Stakeholder	The party (such as suppliers, customers and others) who is responsible for the review and approval of the Engineering Change Approval Request. The stakeholders may be from multiple organizations.
Invoice Receiver	The organization being invoiced.
Invoice Provider	The organization that generates the invoice.
Invoice Reject Receiver	The organization being issued an Invoice Reject Notification.
Shipment Requester	The party requesting transportation services.
Sales Marketing Program Reimbursement Recipient	The partner role that receives status on a previously submitted sales marketing claim, or who receives reimbursement without submitting a claim.
Product Distributor	The party authorized by a Product Supplier to purchase goods and services from the Product Supplier and resell to customers.
Implementation Plan Creator	The partner role that creates, maintains and manages an implementation plan associated with an Engineering Change Order.
Invoice Reject Provider	The organization that rejects an invoice.
Specification User	The partner role that uses a manufacturing specification. This might be a sub-contract assembler or fabricator.
Change Requester	A party who has an interest in requesting a review of a possible change to the component. The requester may be any party including customers and suppliers.
Forecast Owner	The party that creates a sales or order forecast and is ultimately responsible for it.
Forecast Recipient	The party that receives a sales or order forecast.
Delivery Appointment Provider	A party that receives a request for a change to a previously scheduled delivery appointment.
Solution Requester	This party that creates a demand for a product or service, or has contracted with a Solution Provider for the manufacture or fulfillment of a product(s).
Delivery Appointment Requester	A party that requests a change to a previously scheduled delivery appointment.
Change Review Forum	A party who has responsibility for the review of Engineering Change Requests and the drafting and review of Engineering Change Orders. The Change Review Forum is assumed to be at the company that has responsibility for the engineering aspects of the component affected by the change.

GlobalPartnerRoleClassificationCode	
Value	Definition
Stakeholder	The party that is required to implement an Engineering Change Order. The Stakeholder may include all levels of suppliers, customers or other parties. The Stakeholder may represent multiple organizations. The Stakeholder may draft and or be responsible for completing tasks in an implementation plan

Appendix C: GlobalBusinessServiceCode Values

This table extracted from the RosettaNet EntityInstances.htm document.

GlobalBusinessServiceCode	
Value	Definition
Product Supplier Service	
Product Information Distributor Agent	
Product Information User Service	
Product Information Distributor Service	
Customer Manager Service	
Product Information Subscriber Service	
Buyer Service	
Customer Service	
Supplier Service	
Sales Facilitator Service	
Seller Service	

Appendix D: GlobalBusinessActionCode Values

This table extracted from the RosettaNet EntityInstances.htm document.

GlobalBusinessActionCode	
Value	Definition
Failure Notification	An unsolicited informal notification of the failure to perform a business activity.
Product Information Notification	A product information notification contains unstructured sales catalog information.
Product Resource Update	A product resource update contains structured technical information and sales catalog information for updating online sales catalogs and enterprise systems.
Transportation Projection Notification	
Advance Shipment Notification	
Return Product Response	
Billing Statement Notification	
Remittance Advice Notification	
Shipper's Manifest Notification	
Purchase Order Status Notification	An unsolicited informal notification of the status of an existing open Purchase order. The status reflects the current state of the Purchase Order at the time of the request.
Financing Response	
Subscription Cancellation	Cancellation of an existing subscription.
Financing Request	
Shipment Status Query	
Shipment Status Response	
Invoice Reject Notification	
Shipment Status Notification	
Purchase Order Status Query	A query to request the status of an existing purchase order.
Shopping Cart Transfer Acceptance	Confirms that the receiving partner is accepting the transfer of a shopping cart's contents for fulfillment.
Shopping Cart Transfer	A request for a partner to accept the contents of a shopping cart.
Technical Information Response	Response to a technical information user's query for technical information.

GlobalBusinessActionCode	
Value	Definition
Technical Information Query	A query for technical information to a product information distributor.
Product Information Response	Response to a product information user's query for product information.
Product Information Query	A query for product information from a product information distributor.
Price and Availability Response	Response to customer query for price and availability.
Stock Keeping Unit Creation Notification	A notification informing the customer manager that a new Stock Keeping Unit (SKU) has been created for the product.
Purchase Order Status Response	A response to a query requesting the status of an existing purchase order. The status reflects the current state of the Purchase Order at the time of the request.
Invoice Notification	
Purchase Order Acceptance	Confirms the creation, change or cancellation of a Purchase Order.
Purchase Order Cancellation	Cancellation of an existing Purchaser Order.
Purchase Order Change	A change of an existing Purchase Order.
Purchase Order Request	A request to accept a Purchase Order for fulfillment.
Subscription Confirmation	Confirms the creation, change, or cancellation of a subscription.
Subscription Request	A request to create a subscription for product information distribution.
Sales Promotion and Rebate Information Query	
Price and Availability Query	A query for product price and availability from a product supplier.
Marketing Information Query	
Account Change Request	
Account Setup Acknowledgment	
Account Request	
Product Discontinuation Information Query	
Shipment Change Confirmation	
Delivery Appointment Response	
Delivery Appointment Request	
Shipment Receipt Notification	
Transportation Claim Response	

GlobalBusinessActionCode	
Value	Definition
Account Change Response	
Create Remittance Advice	
Shipment Change Request	
Marketing Information Response	
Quote Response	
Quote Request	
Product Discontinuation Information Response	
Inspection Result Notification	
Subscription Change	Change of an existing subscription.
Lifecycle Information Response	
Product Lifecycle Query	
Sales Promotion and Rebate Information Response	
Transportation Claim Request	
Return Product Request	
Delivery Exception Notification	
Return Result	
Pending Return Notification	
Credit Reference Query	
Ship From Stock And Debit Authorization Response	
Ship From Stock And Debit Authorization Request	
Ship From Stock And Debit Claim Request	
Ship From Stock And Debit Claim Response	
Ship From Stock And Debit Claim Status Notification	
Updated Authorization Status Notification	Updated authorization status report notification to the product seller on active contracted resellers.
Ship From Stock And Debit Authorization Status	

GlobalBusinessActionCode	
Value	Definition
Query	
Credit Reference Response	
Ship From Stock And Debit Authorization Status Response	
Purchase Order Acceptance Notification	A notification of additional purchase order acceptance information.
Engineering Change Request	
Engineering Change Response	
Engineering Change Response Notification	
Engineering Change Approval Request	
Engineering Change Approval Response	
Engineering Change Order Notification	
Engineering Change Implementation Plan Notification	
Basic Product Information Change	
Registration Status Query	
Change Product Technical Information Confirmation	
Product Lifecycle Information Change	
Change Product Lifecycle Information Confirmation	
Optional Product Information Query	
Optional Product Information Response	
Product List Notification	
Design Registration Response	
Open Ship From Stock And Debit Authorization Status Notification	
Registration Status Notification	
Product Technical Information Change	
Registration Status Response	
Change Product Sales Promotion and Rebate	

GlobalBusinessActionCode	
Value	Definition
Information Confirmation	
Win Claim Request	
Product Sales Promotion and Rebate Information Change	
Change Product Marketing Information Confirmation	
Product Marketing Information Change	
Change Basic Product Information Acceptance	
Blanket Ship From Stock And Debit Authorization Notification	
Win Claim Response	
Design Registration Request	

Appendix E: GlobalBusinessActionCode Values

This table extracted from the RosettaNet EntityInstances.htm document.

GlobalBusinessActionCode	
Value	Definition
Failure Notification	An unsolicited informal notification of the failure to perform a business activity.
Product Information Notification	A product information notification contains unstructured sales catalog information.

Appendix F: GlobalMimeTypeQualifierCode Values

This table extracted from the RosettaNet EntityInstances.htm document.

GlobalMimeTypeQualifierCode	
Value	Definition
model/iges	
application/news-transmission	
application/wordperfect5.1	
application/iges	
image/vnd.wap.wbmp	
application/vnd.motorola.flexsuite.kmr	
application/cybercash	
application/pdf	
application/zip	
video/vnd.motorola.videop	
application/remote-printing	
model/vrml	
model/mesh	
model/vnd.dwf	
model/vnd.gtw	
application/news-message-id	
application/mathematica	
application/slate	
model/vnd.flatland.3dml	
application/msword	
application/macwriteii	
application/octet-stream	
application/vnd.accpac.simply.aso	
message/partial	

GlobalMimeTypeQualifierCode	
Value	Definition
message/external-body	
message/news	
message/rfc822	
multipart/byteranges	
multipart/encrypted	
message/http	
message/delivery-status	
application/dec-dx	
message/s-http	
application/mac-binhex40	
application/postscript	
application/oda	
application/atomicmail	
application/andrew-inset	
application/wita	
application/dca-rft	
application/activemessage	
application/rtf	
application/applefile	
message/disposition-notification	
image/vnd.dxf	
image/gif	
text/richtext	
text/plain	
image/vnd.fastbidsheet	
image/prs.btif	

GlobalMimeTypeQualifierCode	
Value	Definition
image/vnd.xiff	
image/vnd.net-fpx	
video/vnd.motorola.video	
image/png	
video/vnd.vivo	
image/vnd.svf	
image/vnd.dwg	
image/naplps	
image/cgm	
image/tiff	
image/g3fax	
application/vnd.ufdl	
image/vnd.fpx	
audio/vnd.rhetorex.32kadpcm	
image/prs.pti	
image/vnd.cns.inf2	
image/vnd.mix	
audio/basic	
audio/32kadpcm	
audio/vnd.qcelp	
audio/vnd.digital-winds	
text/enriched	
audio/vnd.octel.sbc	
image/jpeg	
audio/vnd.vmx.cvsd	
audio/vnd.nortel.vbk	

GlobalMimeTypeQualifierCode	
Value	Definition
audio/vnd.cns.anp1	
audio/vnd.cns.inf1	
audio/L16	
video/mpeg	
video/quicktime	
audio/vnd.lucent.voice	
application/ipp	
image/ief	
application/pkix-cert	
application/vnd.hp-hpid	
application/vnd.pg.osasli	
application/vnd.pg.format	
application/vnd.mediastation.cdkey	
application/vnd.previewsystems.box	
application/vnd.Mobius.TXF	
application/ocsp-request	
application/vnd.Mobius.PLC	
application/vnd.vcx	
application/riscos	
application/vnd.accpac.simply.imp	
application/eshop	
application/vnd.motorola.flexsuite.ttc	
application/vnd.motorola.flexsuite.gotap	
application/vnd.motorola.flexsuite.fis	
application/ocsp-response	
application/index.cmd	

GlobalMimeTypeQualifierCode	
Value	Definition
application/sdp	
application/http	
application/vnd.dpgraph	
application/vnd.powerbuilder75-s	
application/vnd.powerbuilder75	
application/vnd.triscscape.mxs	
application/index.vnd	
application/pkix-crl	
application/index.response	
application/vnd.motorola.flexsuite.adsi	
application/index	
application/vnd.cups-raw	
application/vnd.cups-postscript	
application/vnd.cups-raster	
application/vnd.Mobius.MSL	
application/vnd.Mobius.DAF	
application/vnd.Mobius.DIS	
application/index.obj	
application/vnd.claymore	
application/marc	
application/vnd.fujitsu.oasysprs	
application/vnd.fujitsu.oasysgp	
application/vnd.visio	
application/vnd.netfpx	
application/vnd.audiograph	
application/vnd.epson.salt	

GlobalMimeTypeQualifierCode	
Value	Definition
application/vnd.3M.Post-it-Notes	
application/vnd.novadigm.EDX	
application/vnd.ecowin.seriesrequest	
application/vnd.novadigm.EDM	
application/vnd.ibm.modcap	
application/vnd.comscaller	
application/pkcs7-mime	
application/pkcs7-signature	
application/pkcs10	
application/vnd.yellowriver-custom-menu+A91	
application/vnd.ecowin.chart	
application/vnd.ecowin.series	
application/vnd.ecowin.filerequest	
application/commonground	
application/vnd.novadigm.EXT	
application/vnd.lotus-screencam	
application/vnd.FloGraphIt	
application/vnd.intercon.formnet	
application/vemmi	
application/vnd.ms-asf	
application/vnd.ecdis-update	
application/vnd.powerbuilder6	
application/vnd.powerbuilder6-s	
application/vnd.lotus-wordpro	
application/vnd.lotus-approach	
application/vnd.fujitsu.oasys3	

GlobalMimeTypeQualifierCode	
Value	Definition
application/vnd.lotus-organizer	
application/vnd.acucobol	
application/vnd.lotus-freelance	
application/vnd.fujitsu.oasys	
application/vnd.fujitsu.oasys2	
application/vnd.swiftview-ics	
application/vnd.dna	
application/prs.cww	
application/vnd.wt.stf	
application/vnd.dxr	
application/vnd.mitsubishi.misty-guard.trustweb	
application/vnd.ecowin.seriesupdate	
application/vnd.lotus-1-2-3	
application/vnd.epson.msf	
application/vnd.uplanet.cacheop-wbxml	
application/vnd.uplanet.list-wbxml	
application/vnd.uplanet.listcmd-wbxml	
application/vnd.uplanet.channel-wbxml	
application/vnd.uplanet.bearer-choice-wbxml	
application/vnd.epson.quickanime	
application/vnd.commonspace	
application/vnd.fut-misnet	
application/vnd.xfdl	
application/vnd.ecowin.fileupdate	
application/vnd.epson.ssf	
application/vnd.uplanet.bearer-choice	

GlobalMimeTypeQualifierCode	
Value	Definition
application/vnd.powerbuilder7	
application/vnd.powerbuilder7-s	
application/vnd.lotus-notes	
application/pkixcmp	
application/vnd.wap.wmlc	
application/vnd.wap.wmlscriptc	
application/vnd.motorola.flexsuite	
application/vnd.wap.wbxml	
application/vnd.motorola.flexsuite.wem	
application/vnd.intu.qfx	
application/vnd.is-xpr	
application/EDIFACT	
application/EDI-X12	
application/EDI-Consent	
application/vnd.wrq-hp3000-labelled	
application/vnd.minisoft-hp3000-save	
application/vnd.ffsns	
application/vnd.hp-hps	
application/vnd.fujixerox.docuworks	
application/xml	
application/vnd.uplanet.alert-wbxml	
application/vnd.anser-web-certificate-issue-initiation	
application/vnd.uplanet.signal	
application/vnd.intu.qbo	
application/vnd.publishare-delta-tree	
application/vnd.cybank	

GlobalMimeTypeQualifierCode	
Value	Definition
application/batch-SMTP	
application/vnd.uplanet.alert	
application/vnd.uplanet.cacheop	
application/vnd.uplanet.list	
application/vnd.uplanet.listcmd	
application/vnd.uplanet.channel	
application/vnd.hp-PCL	
application/vnd.anser-web-funds-transfer-initiation	
application/vnd.intertrust.digibox	
multipart/appledouble	
application/vnd.businessobjects	
application/vnd.meridian-slingshot	
application/vnd.xara	
application/sgml-open-catalog	
application/vnd.rapid	
application/vnd.enliven	
application/vnd.japannet-registration-wakeup	
application/vnd.japannet-verification-wakeup	
application/set-registration	
application/vnd.japannet-directory-service	
application/set-registration-initiation	
application/vnd.intertrust.nncp	
application/prs.alvestrand.titraw-sheet	
application/vnd.noblenet-web	
multipart/signed	
multipart/voice-message	

GlobalMimeTypeQualifierCode	
Value	Definition
multipart/report	
multipart/related	
multipart/form-data	
application/vnd.musician	
application/vnd.japannet-payment-wakeup	
application/vnd.ms-tnef	
application/sgml	
application/cals-1840	
application/pgp-encrypted	
application/pgp-signature	
application/pgp-keys	
application/vnd framemaker	
application/vnd.mif	
application/vnd.ms-excel	
application/vnd.ms-powerpoint	
application/vnd.seemail	
application/vnd.ms-works	
multipart/parallel	
application/vnd.svd	
application/vnd.music-niff	
application/vnd.ms-artgalry	
application/vnd.truedoc	
application/vnd.koan	
application/vnd.street-stream	
application/vnd.fdf	
application/set-payment-initiation	

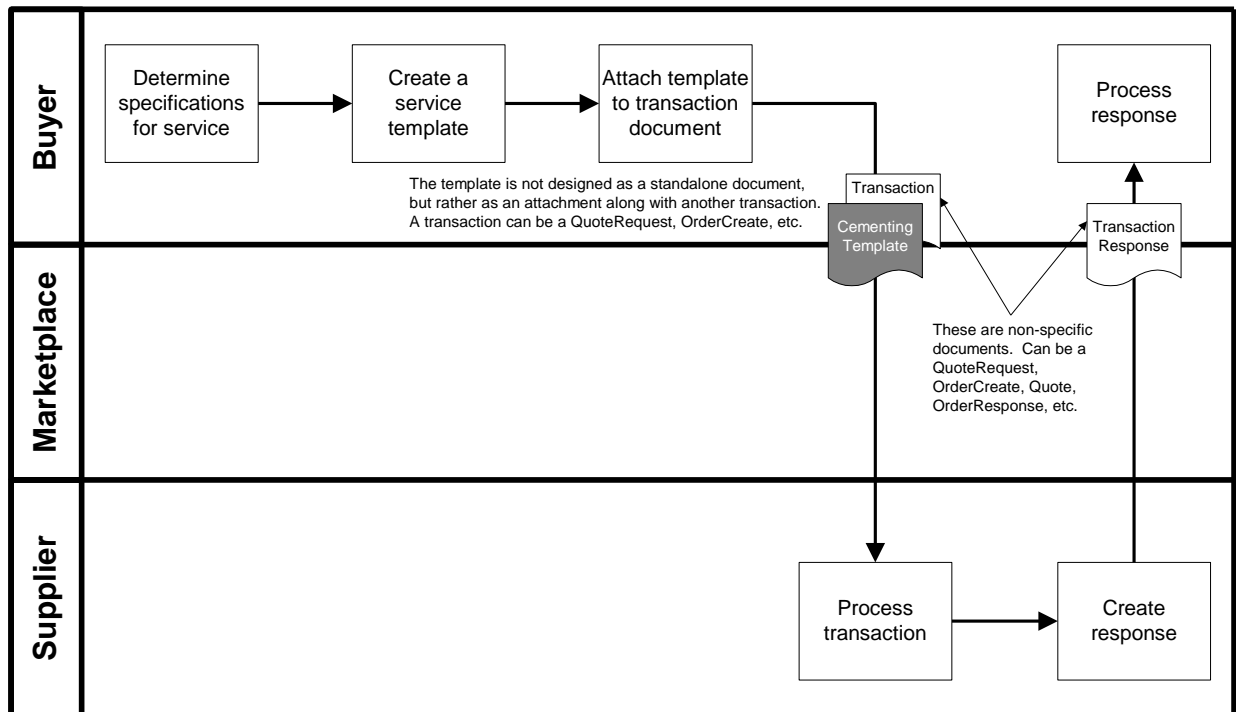
GlobalMimeTypeQualifierCode	
Value	Definition
application/set-payment	
application/vnd.ms-project	
application/vnd.shana.informed.package	
multipart/header-set	
text/sgml	
text/html	
text/tab-separated-values	
application/vnd.noblenet-sealer	
application/vnd.noblenet-directory	
application/prs.nprend	
application/vnd.webturbo	
application/hyperstudio	
text/vnd.latex-z	
application/vnd.shana.informed.formdata	
text/vnd.fmi.flexstor	
application/vnd.shana.informed.interchange	
application/vnd.\$commerce_battelle	
application/vnd.osa.netdeploy	
application/vnd.ibm.MiniPay	
application/vnd.japannet-jpnstore-wakeup	
application/vnd.japannet-setstore-wakeup	
application/vnd.japannet-verification	
application/vnd.japannet-registration	
application/vnd.hp-HPGL	
application/x400-bp	
application/vnd.shana.informed.formtemplate	

GlobalMimeTypeQualifierCode	
Value	Definition
text/calendar	
multipart/digest	
multipart/alternative	
multipart/mixed	
text/vnd.fly	
text/vnd.motorola.reflex	
text/vnd.wap.wml	
application/vnd.hp-PCLXL	
text/directory	
text/vnd.in3d.3dml	
text/uri-list	
text/vnd.wap.wmlscript	
text/rfc822-headers	
text/rtf	
text/prs.lines.tag	
text/vnd.in3d.spot	
text/css	
text/xml	
text/vnd.abc	

Appendix G: Cementing Template

Business Process Diagram

Below is the Business Process Diagram for the Cementing Template document. This is not the only method in which a template can be processed, however, it represents a primary process. Third parties, including a Marketplace, may be involved if necessary.



Process Model - A Buyer determines that a service is necessary and makes a decision to create a request for quote or an order. The Buyer determines the specifications for the service and completes a Cementing Template. The template is sent along with the transaction document (QuoteRequest, OrderCreate, etc.). The Seller processes the transaction and creates a response. The response is sent to the Buyer.

The Cementing Template document is used to provide detailed information specific to a cementing service to a Seller. The template was designed to be an attachment to another transaction, rather than as a standalone document.

Legend to Tables

The following tables detail the elements and attributes that make up the Cementing Template. The legend below provides guidance to understanding the element tables. The legend is an example only and is not part of the document standard data.

Telephone 1

2

A collection of elements detailing information about a telephone number.

3	note								
	level	OrderCreateProperties OrderCreateDetails	4						
	children	<p>Name</p> <p>PhoneNumber</p> <p>A numerical sequence to reach a telephone attached to a communication network.</p> <p>PhoneNumberExtension</p> <p>An extension number that is needed to further identify the phone number.</p> <p>TelecomCountryCode</p> <p>The dialing code from another country to access the telephone network in another country.</p> <p>TelecomAreaCode</p> <p>The area code within a country or jurisdiction, if needed, to access local telephones within the country.</p>	5	6	7	8	Use	Max	
					string		M	1	
					string		O	1	
					string		O	1	
					string		O	1	
	parent(s)	ContactInformation	9						
	attributes	<p>Name</p> <p>telephoneIndicator</p> <p>A code to indicate the type of phone number being given.</p> <p>Fax</p> <p>Mobile</p> <p>Pager</p> <p>Voice</p> <p>Other</p>	10	11	14	12	13	Use	Fixed
					string		O		

Legend

1	The name of the element.
2	The definition of the element.
3	Contains any business rules or comments about the element
4	Identifies whether or not the element is under the Property, Detail, or Summary level of the document
5	Contains the name of the child elements and their definitions. Those elements in blue are links to the element specification. Only those elements that contain children or attributes are hyperlinked.
6	Indicates the data type of the element.
7	Indicates whether the element is mandatory (M) or optional (O).
8	Indicates whether the element can have a maximum of one occurrence (1) or unbounded multiple occurrences (U)
9	Indicates the parent element of the element.
10	Contains the name of any attributes and their definitions.
11	Indicates the data type of the attribute. If the type is blank, then the element contains children rather than data.
12	Indicates whether the attribute is mandatory (M) or optional (O).

13	Provides a fixed value for the attribute.
14	The shaded areas provide either code list values, rules, or notes about the child element or attribute.

The document, its properties, details, line item, sub-line item, and summary elements are presented first. They are followed by an alphabetical listing of those elements used in the document and have children or attributes.

Document Detail

CementingTemplate

The root element of the Cementing Template message. It is used to provide specifications for a cementing job.

note		Type	Use	Max
children	Name TemplateProperties A collection of elements defining the template "meta-data" or "common data". CementingTemplateDetail A collection of elements providing the detail of the cementing service.		M	1
			M	1

TemplateProperties

A collection of elements defining the template "meta-data" or "common data".

note		Type	Use	Max
children	TemplateNumber A number which uniquely identifies the template. TemplateIssuedDate The date upon which the template was created or issued. CommodityCode A code indicating the categorization of a product or service in accordance with a particular standard. ReferenceInformation A collection of elements detailing references to information that reside outside of the current transaction message. ResponseDate The date upon which a response to the template is made.	string date string date	M M M O	1 1 1 U 1
parent(s)	CementingTemplate			

CementingTemplateDetail

A collection of elements providing the detail of the cementing service.

note		Type	Use	Max
children	<p>Name</p> <p>JobType A code indicating the type of job being performed.</p> <p>ConductorCasing</p> <p>Intermediate</p> <p>Liner</p> <p>Production</p> <p>SurfaceCasing</p> <p>Other</p> <p>WellDetail</p> <p>A collection of elements containing details about a well.</p> <p>CasingInformation</p> <p>A collection of elements containing information about casing.</p> <p>BargeRequiredFlag</p> <p>A flag indicating whether a barge is required. It assists in determining truck or skid equipment.</p> <p>JobDescription</p> <p>A free-form textual description of the job.</p> <p>OneWayMileage</p> <p>The measurement and unit of measure for the mileage from the service point to dock or location.</p> <p>MudDetail</p> <p>A collection of elements that contain information about mud.</p> <p>CementDetail</p> <p>A collection of elements providing detail about cement.</p> <p>Comment</p> <p>A free-form textual structure for general information or comments.</p>		M	1
		boolean	O	1
		string	O	1
			O	1
			O	1
			O	1
		string	O	1
parent(s)	CementingTemplate			

BottomHoleCirculationTemperature

The measurement and unit of measure for the circulation temperature of the well as determine by the customer.

note		Type	Use	Max
children	<p>Name</p> <p>Measurement A numeric value for technical or attribute data.</p> <p>UnitOfMeasureCode A code identifying the units in which measurement is expressed.</p> <p>Use values from the DE 355 code list contained in ASC X12 release 3030.</p>	decimal	M	1
		string	M	1
parent(s)	WellDetail			

BottomHoleStaticTemperature

The measurement and unit of measure for the static temperature of the well as determine by the customer.

children	Name	Type	Use	Max
----------	------	------	-----	-----

	<p>Measurement decimal M 1</p> <p>A numeric value for technical or attribute data.</p> <p>UnitOfMeasureCode string M 1</p> <p>A code identifying the units in which measurement is expressed.</p> <p>Use values from the DE 355 code list contained in ASC X12 release 3030.</p>
parent(s)	WellDetail

CasingInformation

A collection of elements containing information about casing.

note		Type	Use	Max
children	Name			
	CasingSize		M	1
	The measurement and unit of measure for the size of a casing.			
	CasingGrade	string	O	1
	The grade of the casing. An API grade or other.			
	CasingWeight		O	1
	The measurement and unit of measure for the document weight of a linear unit of casing with or without a collar.			
	PreviousCasingSize		O	1
parent(s)	The measurement and unit of measure for the diameter of the previous casing.			
	PreviousCasingWeight		O	1
	The measurement and unit of measure for the document weight of a linear unit of casing with or without a collar.			
	PreviousCasingMeasureDepth		O	1
	The measurement and unit of measure for the depth of the previous casing.			
	PreviousCasingTrueVerticalDepth		O	1
	The measurement and unit of measure for the true vertical depth of the previous casing.			
parent(s)	CementingTemplateDetail			

CasingSize

The measurement and unit of measure for the size of a casing.

note		Type	Use	Max
children	Name			
	Measurement	decimal	M	1
	A numeric value for technical or attribute data.			
parent(s)	UnitOfMeasureCode	string	M	1
	A code identifying the units in which measurement is expressed. Use values from the DE 355 code list contained in ASC X12 release 3030.			
parent(s)	CasingInformation			

CasingWeight

The measurement and unit of measure for the document weight of a linear unit of casing with or without a collar.

note		Type	Use	Max
children	Name			
	Measurement	decimal	M	1
	A numeric value for technical or attribute data.			
parent(s)	UnitOfMeasureCode	string	M	1
	A code identifying the units in which measurement is expressed. Use values from the DE 355 code list contained in ASC X12 release 3030.			
parent(s)	CasingInformation			

CementAboveLiner

The measurement and unit of measure for the height of cement above the liner.

note		Type	Use	Max
children	Name			
	Measurement	decimal	M	1
	A numeric value for technical or attribute data.			
	UnitOfMeasureCode	string	M	1
	A code identifying the units in which measurement is expressed.			
	Use values from the DE 355 code list contained in ASC X12 release 3030.			
parent(s)	CementDetail			

CementDetail

A collection of elements providing detail about cement.

note		Type	Use	Max
children	Name			
	PreflushSpaceDensity		O	1
	The measurement and unit of measure for the density of the substance.			
	DesiredPreflushSpacer	string	O	1
	An indicator of the type of preflush spacer desired.			
	None			
	Preflush			
	Flush			
	Spacer			
	Description	string	O	1
	A free-form textual explanation or clarification.			
	PercentExcess	decimal	O	1
	The excess cement divided by the calculated volume, expressed as a percentage.			
	Lead		O	1
A collection of elements that contain information relating to the tail.				
Tail		O	1	
A collection of elements that contain information relating to the tail.				
CementTopNominal		O	1	
The measurement and unit of measure for the expected top of cement after job.				
CementHeight		O	1	
The measurement and unit of measure for the expected height of cement after the job.				
CementAboveLiner		O	1	
The measurement and unit of measure for the height of cement above the liner.				
parent(s)	CementingTemplateDetail			

CementHeight

The measurement and unit of measure for the expected height of cement after the job.

note		Type	Use	Max
children	Name			
	Measurement	decimal	M	1

	<p>A numeric value for technical or attribute data.</p> <p>UnitOfMeasureCode string M 1</p> <p>A code identifying the units in which measurement is expressed.</p> <p>Use values from the DE 355 code list contained in ASC X12 release 3030.</p>
parent(s)	CementDetail

CementTopNominal

The measurement and unit of measure for the expected top of cement after job.

note		Type	Use	Max
children	Name			
	Measurement	decimal	M	1
	A numeric value for technical or attribute data.			
	UnitOfMeasureCode	string	M	1
	A code identifying the units in which measurement is expressed.			
	Use values from the DE 355 code list contained in ASC X12 release 3030.			
parent(s)	CementDetail			

CommodityCode

A code indicating the categorization of a product or service in accordance with a particular standard.

note		Type	Use	Fixed
parent(s)	TemplateProperties			
attributes	Name			
	agencyIndicator	string	O	
	A code indicating what agency or organization is responsible for defining the commodity code list.			

DesiredFill

The measurement and unit of measure for the desired amount of fill.

note		Type	Use	Max
children	Name			
	Measurement	decimal	M	1
	A numeric value for technical or attribute data.			
	UnitOfMeasureCode	string	M	1
	A code identifying the units in which measurement is expressed.			
	Use values from the DE 355 code list contained in ASC X12 release 3030.			
parent(s)	Lead Tail			

Lead

A collection of elements that contain information relating to the tail.

note		Type	Use	Max
children	Name			
	PercentExcess	decimal	O	1
	The excess cement divided by the calculated volume, expressed as a percentage.			
	DesiredFill		O	1
	The measurement and unit of measure for the desired amount of fill.			
	CementDescription	string	O	1
	A free-form textual description of the cement used.			
parent(s)	CementDetail			

LinerTopDepth

The measurement and unit of measure for the depth of the liner top.

note		Type	Use	Max
children	Name			
	Measurement	decimal	M	1
	A numeric value for technical or attribute data.			
	UnitOfMeasureCode	string	M	1
	A code identifying the units in which measurement is expressed.			
	Use values from the DE 355 code list contained in ASC X12 release 3030.			
parent(s)	CementDetail			

MudDetail

A collection of elements that contain information about mud.

note		Type	Use	Max
children	Name			
	MudType	string	O	1
	An indicator of the type of mud being used.			
	MudWeight		O	1
	The measurement and unit of measure for the weight of the mud.			
parent(s)	CementingTemplateDetail			

MudWeight

The measurement and unit of measure for the weight of the mud.

note		Type	Use	Max
children	Name			
	Measurement	decimal	M	1
	A numeric value for technical or attribute data.			
	UnitOfMeasureCode	string	M	1
	A code identifying the units in which measurement is expressed.			
	Use values from the DE 355 code list contained in ASC X12 release 3030.			
parent(s)	MudDetail			

OneWayMileage

The measurement and unit of measure for the mileage from the service point to dock or location.

note		Type	Use	Max
children	Name			
	Measurement	string	M	1
	A numeric value for technical or attribute data.			
	UnitOfMeasureCode	string	M	1
	A code identifying the units in which measurement is expressed.			
	Use values from the DE 355 code list contained in ASC X12 release 3030.			
parent(s)	CementingTemplateDetail			

OpenHoleSize

The measurement and unit of measure for the diameter of the hole.

note		Type	Use	Max
children	Name			
	Measurement	string	M	1
	A numeric value for technical or attribute data.			
	UnitOfMeasureCode	string	M	1
	A code identifying the units in which measurement is expressed.			
	Use values from the DE 355 code list contained in ASC X12 release 3030.			
parent(s)	WellDetail			

PreflushSpaceDensity

The measurement and unit of measure for the density of the substance.

note		Type	Use	Max
children	Name			
	Measurement	string	M	1
	A numeric value for technical or attribute data.			
	UnitOfMeasureCode	string	M	1
	A code identifying the units in which measurement is expressed.			
	Use values from the DE 355 code list contained in ASC X12 release 3030.			
parent(s)	CementDetail			

PreviousCasingMeasureDepth

The measurement and unit of measure for the depth of the previous casing.

note		Type	Use	Max
children	Name			
	Measurement	decimal	M	1
	A numeric value for technical or attribute data.			
	UnitOfMeasureCode	string	M	1
	A code identifying the units in which measurement is expressed.			
	Use values from the DE 355 code list contained in ASC X12 release 3030.			
parent(s)	CasingInformation			

PreviousCasingSize

The measurement and unit of measure for the diameter of the previous casing.

note		Type	Use	Max
children	Name			
	Measurement	decimal	M	1
	A numeric value for technical or attribute data.			
	UnitOfMeasureCode	string	M	1
	A code identifying the units in which measurement is expressed.			
	Use values from the DE 355 code list contained in ASC X12 release 3030.			
parent(s)	CasingInformation			

PreviousCasingTrueVerticalDepth

The measurement and unit of measure for the true vertical depth of the previous casing.

note		Type	Use	Max
children	Name			
	Measurement	decimal	M	1
	A numeric value for technical or attribute data.			
	UnitOfMeasureCode	string	M	1
	A code identifying the units in which measurement is expressed.			
	Use values from the DE 355 code list contained in ASC X12 release 3030.			
parent(s)	CasingInformation			

PreviousCasingWeight

The measurement and unit of measure for the document weight of a linear unit of casing with or without a collar.

note		Type	Use	Max
children	Name			
	Measurement	decimal	M	1
	A numeric value for technical or attribute data.			
	UnitOfMeasureCode	string	M	1
	A code identifying the units in which measurement is expressed.			
	Use values from the DE 355 code list contained in ASC X12 release 3030.			
parent(s)	CasingInformation			

ReferenceInformation

A collection of elements detailing references to information that reside outside of the current transaction message.

note				
children	<p>Name</p> <p>ReferenceNumber A number or identifier that is used to reference documents or information not included within a particular message. The referenceInformationIndicator attribute qualifies what this number references</p> <p>Description A free-form textual explanation or clarification.</p>	<p>Type</p> <p>string</p> <p>string</p>	<p>Use</p> <p>M</p> <p>O</p>	<p>Max</p> <p>1</p> <p>1</p>
parent(s)	TemplateProperties			
attributes	<p>Name</p> <p>referenceInformationIndicator A code to identify what type of information is being referenced.</p> <p>AFENumber</p> <p>BatchNumber</p> <p>BillOfLading</p> <p>Certification</p> <p>CertifiedInspectionTestResults</p> <p>ConfigurationNumber</p> <p>ContractNumber</p> <p>CostAllocationReference</p> <p>CostCenter</p> <p>CustomerAccountingReference</p> <p>CustomerReferenceNumber</p> <p>DeliveryTicketNumber</p> <p>DivisionIdentifier</p> <p>EngineeringChangeOrderNumber</p> <p>JobNumber</p> <p>LetterOfCreditNumber</p> <p>LocationNumber</p> <p>MaterialSafetyDataSheet</p> <p>OperatorGeneralLedgerCode</p> <p>OriginalInvoiceNumber</p> <p>PriceAreaNumber</p> <p>ProjectNumber</p> <p>ProposalNumber</p> <p>QuoteNumber</p> <p>RequestForQuotationNumber</p> <p>TemplateNumber</p> <p>Other</p>	<p>Type</p> <p>string</p>	<p>Use</p> <p>M</p>	<p>Fixed</p>

ShoeJointLength

The measurement and unit of measure of the length of a shoe joint.

note				
children	<p>Name</p> <p>Measurement A numeric value for technical or attribute data.</p> <p>UnitOfMeasureCode A code identifying the units in which measurement is expressed. Use values from the DE 355 code list contained in ASC X12 release 3030.</p>	<p>Type</p> <p>decimal</p> <p>string</p>	<p>Use</p> <p>M</p> <p>M</p>	<p>Max</p> <p>1</p> <p>1</p>
parent(s)	WellDetail			

Tail

A collection of elements that contain information relating to the tail.

note		Type	Use	Max
children	Name			
	PercentExcess	decimal	O	1
	The excess cement divided by the calculated volume, expressed as a percentage.			
	DesiredFill		O	1
	The measurement and unit of measure for the desired amount of fill.			
	CementDescription	string	O	1
	A free-form textual description of the cement used.			
parent(s)	CementDetail			

TotalDepth

The measurement and unit of measure for the proposed or actual depth the well is drilled or based for services.

note		Type	Use	Max
children	Name			
	Measurement	decimal	M	1
	A numeric value for technical or attribute data.			
	UnitOfMeasureCode	string	M	1
	A code identifying the units in which measurement is expressed.			
	Use values from the DE 355 code list contained in ASC X12 release 3030.			
parent(s)	WellDetail			

WaterDepthNominal

The measurement and unit of measure for the depth from sea level to ocean floor at mean tide.

note		Type	Use	Max
children	Name			
	Measurement	decimal	M	1
	A numeric value for technical or attribute data.			
	UnitOfMeasureCode	string	M	1
	A code identifying the units in which measurement is expressed.			
	Use values from the DE 355 code list contained in ASC X12 release 3030.			
parent(s)	WellDetail			

Appendix H: Glossary

Term	Definition
CIDX	Chemical Industry Data Exchange. A chemical industry consortium focused on standardizing data communications among the chemical industry companies. CIDX has published the Chem eStandards which define DTD XML formats for forty-four business transactions. Web site: www.cidx.org
Component Library	Reusable PIDX XML Schema components are stored in an XML Schema named PIDXlib.xsd. PIDXlib.xsd is the component library.
Com.Pro.Serv.	Complex Products and Services Task Group. Project team sanctioned by the Petroleum Industry Data eXchange (PIDX).
Document Type Declaration	A statement within an XML Schema that identifies a DTD that can be used for XML instance document validation. Never abbreviated DTD. <!DOCTYPE <i>name-of-root-element</i> SYSTEM " <i>URL -of-the-external-DTD</i> " [<i>internal DTD subset</i>]
Document Type Definition	A text-related schema language that may be used to define XML instance (data) files. May be abbreviated <i>DTD</i> .
DTD	Please see <i>Document Type Definition</i> .
EDI	Please see <i>Electronic Data Interchange</i> .
Electronic Data Interchange	The American National Standards Institute (ANSI) chartered the Accredited Standards Committee (ASC) X12 to develop uniform standards for inter-industry electronic interchange of business transactions -- <i>Electronic Data Interchange (EDI)</i> . ANSI X.12 Electronic Data Interchange (EDI) standards define the data formats that allow companies to exchange business data electronically. Web site: www.x12.org
Extensible Markup Language	<i>Extensible Markup Language (XML)</i> is a standard for defining data using data tags and other markup constructs. <i>XML</i> allows the user to define tags in addition to predefined tags. The base specifications are XML 1.0, W3C Recommendation Feb '98, and Namespaces, Jan '99. The XML standards is maintained by the <i>World Wide Web Consortium</i> . The base specifications are XML 1.0 Second addition, W3C Recommendation 6 October 2000 (web site: www.w3.org/TR/2000/REC-xml-20001006), and Namespaces, 14 January 1999 (web site: www.w3.org/TR/1999/REC-xml-names-19990114/)
Information Item	<i>XML</i> element or attribute
Instance Document	An <i>XML</i> data document that conforms to the W3C <i>XML</i> standard.

Term	Definition
Petroleum Industry Data eXchange International	An organization sanctioned to promote and facilitate the exchange of electronic data within the petroleum industry.
PIDX International	Please see <i>Petroleum Industry Data eXchange International</i>
RosettaNet	RosettaNet is an electronic data exchange standards body that focuses on the high technology, electronics manufacturing industry. It seeks to establish a common data and process model for B2B interaction among semiconductor, electronic components, and information technology manufacturers, suppliers, and distributors.
RosettaNet Implementation Framework	A RosettaNet specification standard that describes the mechanisms for packaging and transporting XML instance (data) documents. <i>RNIF</i>
Reusable Components	XML information items in the PIDXLib.xsd XML Schema that are used in multiple XML Schemas.
RNIF	Please see <i>RosettaNet Implementation Framework</i> .
Service Content	The XML instance (data) document within an RNIF message. The Service Content is a MIME part of a MIME multipart/related document.
Transport, Routing, and Packaging	The PIDX implementation of the <i>RosettaNet Implementation Framework 2.0 (RNIF 2.0)</i> standard.
TRP	Please see <i>Transport, Routing, and Packaging</i>
Validation	The process of comparing an XML instance (data) document to an XML Schema.
World Wide Web Consortium	The World Wide Web Consortium (<i>W3C</i>) has developed more than 35 technical specification for the Web's infrastructure. These standards include standards for XML and XML Schemas. Web Site: www.w3c.org
W3C	Please see the <i>World Wide Web Consortium</i> .
XML Schema	The XML Schema as defined by the May 2, 2001 XML Schema Recommendation published by the W3C. http://www.w3.org/TR/2001/REC-xmlschema-0-20010502/ http://www.w3.org/TR/2001/REC-xmlschema-1-20010502/ http://www.w3.org/TR/2001/REC-xmlschema-2-20010502/
XML	Please see <i>Extensible Markup Language</i> .

