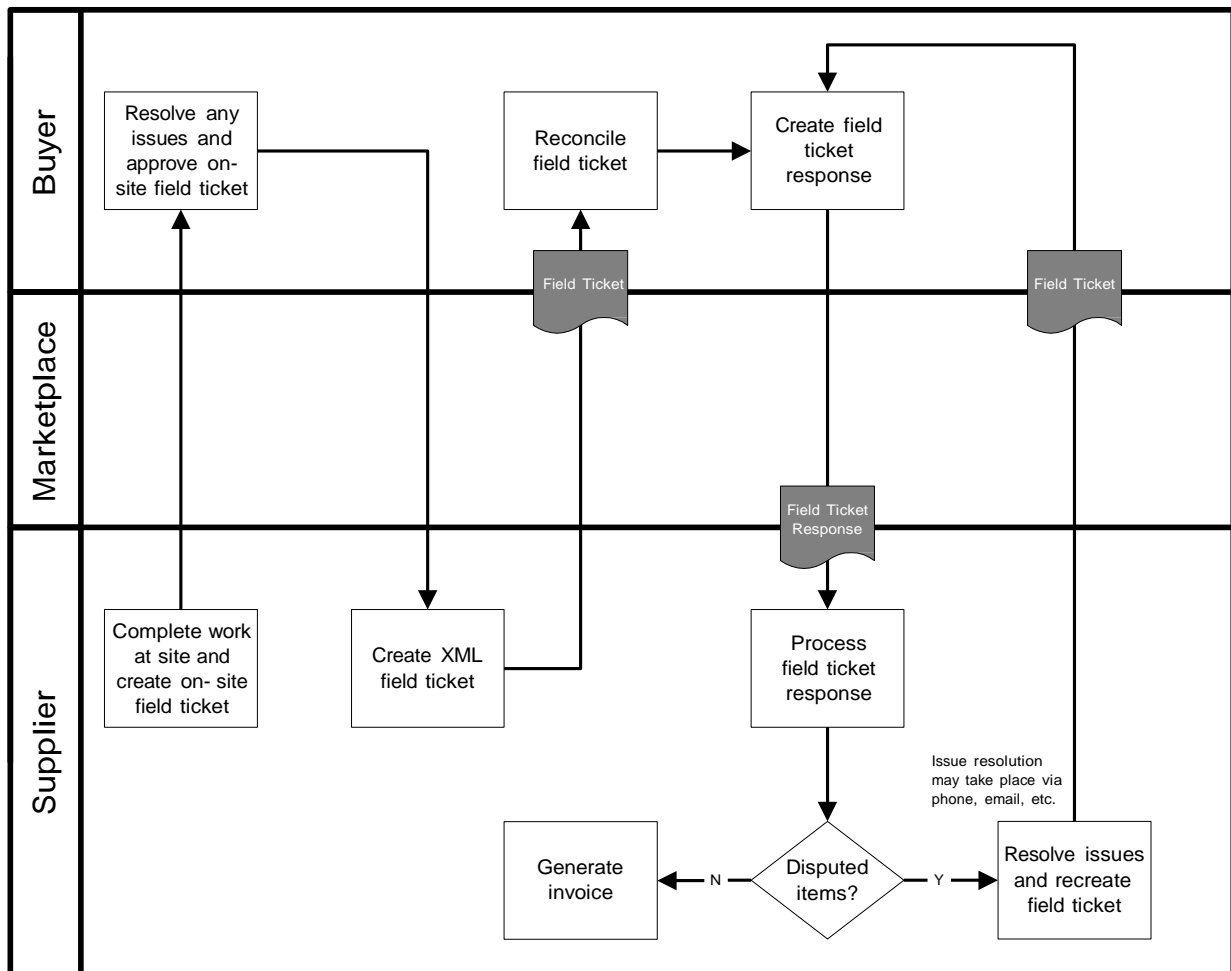


1.0 Field Ticket Implementation Guideline Petroleum Industry Data eXchange

1.1 Business Process Diagram

Below is the Business Process Diagram for the Field Ticket transaction. This is not the only method in which the process can take place; however, it represents a primary process. Third parties, including a Marketplace, may be involved if necessary.



Process Model - A Seller completes work at a customer site. An on-site field ticket is generated and given to the Buyer for approval. The Buyer approves the field ticket, indicating any changes that might be necessary on the field ticket. The seller uses the on-site field ticket information to create an XML field ticket and sends it to the Buyer. The Buyer processes the XML field ticket and sends a response accepting or disputing the field ticket information in whole or in part. Any disputes are handled by phone, email, etc. If necessary, once disputes are resolved, a corrected field ticket is generated and sent to the Buyer.

The Field Ticket document is used a record of the work done at a Buyer's site. Usually, an on-site field ticket is generated and approved. The XML Field Ticket document is generated after the fact as an electronic record of the field ticket information to be sent to the Buyer.

1.2 Legend to Tables

The following tables detail the elements and attributes that make up the Field Ticket. The legend below provides guidance to understanding the element tables. The legend is an example only and is not part of the document standard data.

Telephone ①

A collection of elements detailing information about a telephone number. ②

③	note							
	level	OrderCreateProperties OrderCreateDetails						
	children	<p>⑤ Name</p> <p>⑥ PhoneNumber A numerical sequence to reach a telephone attached to a communication network.</p> <p>PhoneNumberExtension An extension number that is needed to further identify the phone number.</p> <p>TelecomCountryCode The dialing code from another country to access the telephone network in another country.</p> <p>TelecomAreaCode The area code within a country or jurisdiction, if needed, to access local telephones within the country.</p>	⑦	Type	Use	Max		
				string	M	1		
				string	O	1		
				string	O	1		
				string	O	1		
	parent(s)	ContactInformation						
	attributes	<p>⑩ Name</p> <p>⑪ telephoneIndicator A code to indicate the type of phone number being given.</p> <p>Fax</p> <p>Pager</p> <p>Other</p>	11	Type	Use	Fixed		
			14	string	O			
			12	Mobile				
				Voice				

Legend	
1	The name of the element.
2	The definition of the element.
3	Contains any business rules or comments about the element
4	Identifies whether or not the element is under the Property, Detail, or Summary level of the document
5	Contains the name of the child elements and their definitions. Those elements in blue are links to the element specification. Only those elements that contain children or attributes are hyperlinked.
6	Indicates the data type of the element.
7	Indicates whether the element is mandatory (M) or optional (O).
8	Indicates whether the element can have a maximum of one occurrence (1) or unbounded multiple occurrences (U)
9	Indicates the parent element of the element.
10	Contains the name of any attributes and their definitions.
11	Indicates the data type of the attribute. If the type is blank, then the element contains children rather than data.
12	Indicates whether the attribute is mandatory (M) or optional (O).
13	Provides a fixed value for the attribute.
14	The shaded areas provide either code list values, rules, or notes about the child element or attribute.

The document, its properties, details, line item, sub-line item, and summary elements are presented first. They are followed by an alphabetical listing of those elements used in the document and have children or attributes.

1.3 Document Detail

Field ticket

The root element of the Field Ticket message. It is used to send details of work completed during a specified time period.

note		Type	Use	Max
children	Name		M	1
	FieldTicketProperties		M	1
	A collection of elements defining the field ticket "meta-data" or "common data".			
	FieldTicketDetails		M	1
	A collection of elements defining the details of the Field Ticket message.			
	FieldTicketSummary		M	1
	A collection of elements detailing the totals of the field ticket.			
attributes	Name	Type	Use	Fixed
	transactionPurposeIndicator	string	M	
	A code indicating the purpose of the transaction.			
	Add			
	Cancellation	Change		
	Confirmation	Delete		
	Duplicate	Original		
	Replace	Request		
	Other			
	version	decimal	M	1.0
	A fixed number indicating the version of the PIDX XML Standard on which the transaction is based.			

Field Ticket Properties

A collection of elements defining the field ticket "meta-data" or "common data".

note		Type	Use	Max	
children	Name				
	FieldTicketNumber	string	M	1	
	A unique identifier for a Field Ticket.				
	FieldTicketDate	date	M	1	
	The date upon which a field ticket was created or deemed to have been issued. Format is CCYY-MM-DD where "CC" represents the century, "YY" the year, "MM" the month and "DD" the day.				
	PartnerInformation			M	U
	A collection of elements detailing partner information.				
	ApproverName	string	O	1	
	The name of the person who approved the document.				
	ApprovalDate	date	O	1	
	The date upon which the document was approved.				
	Format is CCYY-MM-DD where "CC" represents the century, "YY" the year, "MM" the month and "DD" the day.				
	CountryOfFinalDestination			O	1
	The country where product is ultimately delivered or is deemed to have been delivered.				
	RevisionNumber	string	O	1	
	A number indicating the version of the document. It is used if a message is resent in its entirety to replace an earlier version.				
	PurchaseOrderInformation			O	1
	A collection of elements containing relevant purchase order information which needs to be referenced within other documentation and/or messages.				
	PurchaseOrderLineItemNumber	string	O	1	
	A sequential individual line identifier within a purchase order document containing product or item information.				
	PrimaryCurrency			O	1
	The currency code indicating the currency to be used for the transaction.				
	SecondCurrency			O	1
	The currency code indicating a second currency, such as for European countries using the Euro and a local currency.				
	ServiceDateTime	datetime	O	U	
	The actual and/or schedule dates for a service.				
	LanguageCode	string	O	1	
A code indicating the language used for the transaction.					
Use the codelist from ISO 639-2:1998 Codes for the representation of names of languages – Part 2: Alpha-3 Code.					
JobLocationInformation			O	1	
A collection of elements giving details of a job location.					
JobSummary	string	O	1		
A free-form textual summary of the job.					
CountryOfOrigin			O	1	
The country where product originates or is deemed to have originated.					
TransportInformation			O	1	
A collection of elements detailing how product is transported.					
PaymentTerms			O	1	
A collection of elements detailing payment terms information.					
SpecialInstructions	string	O	U		
A free-form textual description of special requirements.					
ReferenceInformation			O	U	
A collection of elements detailing references to information that reside outside of the current transaction message.					
Attachment			O	U	

	A collection of elements defining the details of an attachment to the document. Comment A free-form textual structure for general information or comments.	string	O	1
parent(s)	FieldTicket			

Field Ticket Details

A collection of elements defining the details of the Field Ticket message.

note				
children	Name FieldTicketLineItem A collection of elements defining the details of the line items making up the field ticket	Type	Use M	Max U
parent(s)	FieldTicket			

Field Ticket Line Item

A collection of elements defining the details of the line items making up the field ticket.

note		Type	Use	Max	
children	Name				
	LineItemNumber	string	M	1	
	A sequential individual line identifier within a document containing service or item information.				
	LineItemInformation			M	1
	A collection of elements detailing identifying information about a line item.				
	FieldTicketQuantity			M	1
	The number of units of an item or service consumed.				
	CommodityCode	string	O		U
	A code indicating the categorization of a product or service in accordance with a particular standard.				
	PurchaseOrderSubLineItemNumber	string	O		1
	A sequential individual sub-line identifier within an Order Create document containing product or item information that relates back to a parent line item.				
	PurchaseOrderInformation			O	1
	A collection of elements containing relevant purchase order information which needs to be referenced within other documentation and/or messages.				
	PersonnelInformation			O	U
	A collection of elements detailing relevant personnel information.				
	PartnerInformation			O	U
	A collection of elements detailing partner information.				
	JobLocationInformation			O	1
	A collection of elements giving details of a job location.				
	Pricing			O	1
	A collection of elements detailing price information.				
	AllowanceOrCharge			O	U
	A collection of elements defining the details of an allowance or charge to the customer.				
	Tax			O	U
	A collection of elements detailing information about tax applied to a transaction.				
	ShippingAmount			O	1
	The monetary amount of shipping or freight charges.				
LineItemTotal			O	1	
The net total monetary amount for the line item.					
ServiceDateTime	datetime	O		U	
The actual and/or schedule dates for a service.					
EquipmentIdentifier	string	O		U	
A unique identifier for a piece of equipment such as used for transportation of product.					
EquipmentDescription	string	O		U	
A free-form textual description of carrier equipment.					
CountryOfOrigin			O	1	
The country where product originates or is deemed to have originated.					
CountryOfFinalDestination			O	1	
The country where product is ultimately delivered or is deemed to have been delivered.					
TransportInformation			O	1	
A code indicating the mode of transportation used to move product.					
PaymentTerms			O	1	
A collection of elements detailing payment terms information.					
SpecialInstructions	string	O		U	
A free-form textual description of special requirements.					
PackagingCharacteristicCode	string	O		U	
A code indicating the marking, packaging, loading and related characteristics being					

	described.			
	<u>PackageSpecifications</u>			
	<u>ProductMarking</u>			
	<u>SkidPalletType</u>			
	<u>TypeOfPackage</u>	Other		
	PackagingCharacteristicDescription	string	O	U
	Free-form text providing any additional information associated with the Packaging Characteristic Code.			
	<u>ReferenceInformation</u>		O	U
	A collection of elements detailing references to information that reside outside of the current transaction message.			
	<u>Attachment</u>		O	U
	A collection of elements defining the details of an attachment to the document.			
	Comment	string	O	1
	A free-form textual structure for general information or comments.			
	<u>FieldTicketSubLineItem</u>		O	U
	A collection of elements defining the details of the sub line items of a field ticket. It is used if a line item needs to be broken down into further detail.			
parent(s)	<u>FieldTicketDetails</u>			

Field Ticket Sub Line Item

A collection of elements defining the details of the sub line items of a field ticket. It is used if a line item needs to be broken down into further detail.

note		Type	Use	Max	
children	Name				
	SubLineItemNumber	string	M	1	
	The sub-line item number relating to the primary line item referenced in the message.				
	LineItemInformation			M	1
	A collection of elements detailing identifying information about a line item.				
	FieldTicketQuantity			M	1
	The number of units of an item or service consumed.				
	CommodityCode	string	O	U	
	A code indicating the categorization of a product or service in accordance with a particular standard.				
	PurchaseOrderSubLineItemNumber	string	O	1	
	A sequential individual sub-line identifier within an Order Create document containing product or item information that relates back to a parent line item.				
	PurchaseOrderInformation			O	1
	A collection of elements containing relevant purchase order information which needs to be referenced within other documentation and/or messages.				
	PersonnelInformation			O	U
	A collection of elements detailing relevant personnel information.				
	PartnerInformation			O	U
	A collection of elements detailing partner information.				
	JobLocationInformation			O	1
	A collection of elements giving details of a job location.				
	Pricing			O	1
	A collection of elements detailing price information.				
	AllowanceOrCharge			O	U
	A collection of elements defining the details of an allowance or charge to the customer.				
	Tax			O	U
	A collection of elements detailing information about tax applied to a transaction.				
	ShippingAmount			O	1
	The monetary amount of shipping or freight charges.				
LineItemTotal			O	1	
The net total monetary amount for the line item.					
ServiceDateTime	datetime	O	U		
The actual and/or schedule dates for a service.					
EquipmentIdentifier	string	O	U		
A unique identifier for a piece of equipment such as used for transportation of product.					
EquipmentDescription	string	O	U		
A free-form textual description of carrier equipment.					
CountryOfOrigin			O	1	
The country where product originates or is deemed to have originated.					
CountryOfFinalDestination			O	1	
The country where product is ultimately delivered or is deemed to have been delivered.					
TransportInformation			O	1	
A code indicating the mode of transportation used to move product.					
PaymentTerms			O	1	
A collection of elements detailing payment terms information.					
SpecialInstructions	string	O	U		
A free-form textual description of special requirements.					
PackagingCharacteristicCode	string	O	U		
A code indicating the marking, packaging, loading and related characteristics being described.					

	<p>PackageSpecifications</p> <p>ProductMarking</p> <p>SkidPalletType</p> <p>TypeOfPackage Other</p> <p>PackagingCharacteristicDescription string O U Free-form text providing any additional information associated with the Packaging Characteristic Code.</p> <p>ReferenceInformation O U A collection of elements detailing references to information that reside outside of the current transaction message.</p> <p>Attachment O U A collection of elements defining the details of an attachment to the document.</p> <p>Comment string O 1 A free-form textual structure for general information or comments.</p>
parent(s)	FieldTicketLineItem

FieldTicketSummary

A collection of elements detailing the totals of the field ticket.

note		Type	Use	Max
children	Name			
	TotalLineItems	integer	M	1
	The total number of line items contained in a message.			
	AllowanceOrCharge		O	U
	A collection of elements defining the details of an allowance or charge to the customer.			
	ShippingAmount		O	U
	The monetary amount of shipping or freight charges.			
	Tax		O	U
	A collection of elements detailing information about tax applied to a transaction.			
	SubTotalAmount		O	U
	The monetary amount of the subtotal. It is qualified by the subTotalIndicator attribute which identifies what the subtotal is referencing.			
	FieldTicketTotal		O	1
	The total monetary amount of the field ticket.			
	TermsDiscountAmount		O	1
	The total monetary amount of the payment terms discount.			
	DiscountedAmountDue		O	1
	The monetary amount due if paid by terms discount due date (total invoice or installment amount less cash discount.)			
parent(s)	FieldTicket			

Address Information

A collection of elements defining the details of an address.

note				
level	FieldTicketProperties FieldTicketDetails			
children	Name	Type	Use	Max
	POBoxNumber The identity of a physical box within a postal facility to accept and receive mail.	string	O	1
	BuildingHouseNumber The alphanumeric identifier of a building as a part of an address.	string	O	1
	StreetName The name of a street as part of an address.	string	O	1
	AddressLine An occurrence of a generally accepted formatted line of data such that when combined with the entire address structure there is sufficient information for delivery or location purposes.	string	O	U
	CityName The name of the city or municipality.	string	O	1
	StateProvince The name of the municipality or town as a location for mailing, siting and other geographic functions.	string	O	1
	PostalCode The code assigned by local postal authorities to delivery addresses.	string	O	1
	PostalCountry The country code indicating the country to which mail should be delivered.		O	1
	CountyName The name of the county.	string	O	1
	LocationIdentifier A unique identifier for a physical location.			
parent(s)	JobLocationInformation Location PartnerInformation TaxLocation			

Allowance Or Charge

A collection of elements defining the details of an allowance or charge to the customer.

note	<ul style="list-style-type: none"> If AllowanceOrCharge is used, then at least one of AllowanceOrChargeRate, AllowanceOrChargeTotalAmount, or AllowanceOrChargePercent is required. 				
level	FieldTicketDetails FieldTicketSummary				
children	Name	Type	Use	Max	
	AllowanceOrChargeTotalAmount The total monetary amount for the allowance or charge.		O	1	
	AllowanceOrChargeRate The rate per unit of the allowance or charge.		O	1	
	AllowanceOrChargePercent The allowance or charge expressed as a percentage.	decimal	O	1	
	AllowanceOrChargeNumber The identifier assigned by a vendor referencing an allowance, promotion, deal or charge.	string	O	1	
	AllowanceOrChargeTypeCode A code identifying the kind of allowance or charge being described.	string	O	1	
	Freight				
	FuelSurcharge				
	SpecialHandlingService	Discount			
	FlatRate				
	EngineeringCharge				
	InvoiceAdjustment				
	InsuranceSurcharge				
	OneTimeLicenseFee	Royalties			
	MiscellaneousCharge				
	PostageCharge				
	TrailerRentalCharge				
	TransportationDirectBilling				
	TransportationVendorProvided	Other			
	MethodOfHandlingCode A code which describes how a particular allowance or charge should be handled.	string	O	1	
	ChargeToBePaidByCustomer Other				
	AllowanceOrChargeDescription A free form description used to clarify the related allowance and charge data elements and their content.	string	O	1	
	AllowanceOrChargeQuantity The quantity on which the allowance or charge is based if it is different from the purchase order or invoice quantity.		O	1	
parent(s)	FieldTicketLineItem FieldTicketSubLineItem FieldTicketSummary				
attributes	Name	Type	Use	Fixed	
	allowanceOrChargeIndicator A code to indicate whether the information relates to an allowance or charge.	string	M		
	Charge				
	Other				

Allowance Or Charge Percent

The allowance or charge expressed as a percentage.

note				
level	FieldTicketDetails FieldTicketSummary			
parent(s)	AllowanceOrCharge			
attributes	Name	Type	Use	Fixed
	percentIndicator	string	O	
	A code indicating on what basis the allowance or charge percent is calculated.			

AllowanceOrChargeQuantity

The quantity on which the allowance or charge is based if it is different from the purchase order or invoice quantity.

note				
level	FieldTicketDetails FieldTicketSummary			
children	Name	Type	Use	Max
	Quantity	decimal	M	1
	A numeric count of measure.			
	UnitOfMeasureCode	string	M	1
	A code identifying the units in which measurement is expressed.			
	Use values from the DE 355 code list contained in ASC X12 release 3030.			
parent(s)	AllowanceOrCharge			

Allowance Or Charge Rate

The rate per unit of the allowance or charge.

note				
level	FieldTicketDetails FieldTicketSummary			
children	Name	Type	Use	Max
	MonetaryAmount	decimal	M	1
	The currency value of a transaction or item.			
	UnitOfMeasureCode	string	M	1
	A code identifying the units in which measurement is expressed.			
	Use values from the DE 355 code list contained in ASC X12 release 3030.			
	CurrencyCode	string	O	1
	A code indicating the currency in which the monetary amount is specified.			
	Use the codelist from ISO 4217:2001 Codes for the representation of currencies and funds.			
parent(s)	AllowanceOrCharge			

Allowance Or Charge Total Amount

The total monetary amount for the allowance or charge.

note				
level	FieldTicketDetails FieldTicketSummary			
children	Name	Type	Use	Max
	MonetaryAmount	decimal	M	1
	The currency value of a transaction or item.			
	CurrencyCode	string	O	1
	A code indicating the currency in which the monetary amount is specified.			
	Use the codelist from ISO 4217:2001 Codes for the representation of currencies and funds.			

parent(s)	AllowanceOrCharge
-----------	-----------------------------------

Alternative Communication Method

Additional methods of communication, such as an IP Address or Printer ID, in addition to those specifically listed elsewhere in contact or address information.

note																																													
level	FieldTicketProperties FieldTicketDetails																																												
parent(s)	ContactInformation																																												
attributes	<table border="1"> <thead> <tr> <th>Name</th> <th>Type</th> <th>Use</th> <th>Fixed</th> </tr> </thead> <tbody> <tr> <td>alternativeCommunicationMethodIndicator</td> <td>string</td> <td>M</td> <td></td> </tr> <tr> <td>A code to indicate the type of alternative communication method.</td> <td></td> <td></td> <td></td> </tr> <tr> <td>AUTOVON</td> <td></td> <td></td> <td></td> </tr> <tr> <td>EDIAccessNumber</td> <td></td> <td></td> <td></td> </tr> <tr> <td>FederalTelecommunicationsSystem</td> <td></td> <td></td> <td></td> </tr> <tr> <td>IPAddress</td> <td></td> <td></td> <td></td> </tr> <tr> <td>PacketSwitching</td> <td>PrinterID</td> <td></td> <td></td> </tr> <tr> <td>StationCode</td> <td>Telemail</td> <td></td> <td></td> </tr> <tr> <td>Telex</td> <td>TWX</td> <td></td> <td></td> </tr> <tr> <td>Other</td> <td></td> <td></td> <td></td> </tr> </tbody> </table>	Name	Type	Use	Fixed	alternativeCommunicationMethodIndicator	string	M		A code to indicate the type of alternative communication method.				AUTOVON				EDIAccessNumber				FederalTelecommunicationsSystem				IPAddress				PacketSwitching	PrinterID			StationCode	Telemail			Telex	TWX			Other			
Name	Type	Use	Fixed																																										
alternativeCommunicationMethodIndicator	string	M																																											
A code to indicate the type of alternative communication method.																																													
AUTOVON																																													
EDIAccessNumber																																													
FederalTelecommunicationsSystem																																													
IPAddress																																													
PacketSwitching	PrinterID																																												
StationCode	Telemail																																												
Telex	TWX																																												
Other																																													

Attachment

A collection of elements defining the details of an attachment to the document.

note																																																													
level	FieldTicketProperties FieldTicketDetails																																																												
children	<table border="1"> <thead> <tr> <th>Name</th> <th>Type</th> <th>Use</th> <th>Max</th> </tr> </thead> <tbody> <tr> <td>AttachmentPurposeCode</td> <td>string</td> <td>O</td> <td>1</td> </tr> <tr> <td>A code to indicate the purpose of the attachment.</td> <td></td> <td></td> <td></td> </tr> <tr> <td>Template</td> <td></td> <td></td> <td></td> </tr> <tr> <td>Other</td> <td></td> <td></td> <td></td> </tr> <tr> <td>FileName</td> <td>string</td> <td>O</td> <td>1</td> </tr> <tr> <td>The name of the file in an attachment.</td> <td></td> <td></td> <td></td> </tr> <tr> <td>AttachmentTitle</td> <td>string</td> <td>O</td> <td>1</td> </tr> <tr> <td>The title of the attachment.</td> <td></td> <td></td> <td></td> </tr> <tr> <td>AttachmentDescription</td> <td>string</td> <td>O</td> <td>1</td> </tr> <tr> <td>A free-form textual description of the attachment.</td> <td></td> <td></td> <td></td> </tr> <tr> <td>FileType</td> <td>string</td> <td>O</td> <td>1</td> </tr> <tr> <td>The type of the file in an attachment.</td> <td></td> <td></td> <td></td> </tr> <tr> <td>AttachmentLocation</td> <td>string</td> <td>O</td> <td>1</td> </tr> <tr> <td>The location of the attachment, such as a URL.</td> <td></td> <td></td> <td></td> </tr> </tbody> </table>	Name	Type	Use	Max	AttachmentPurposeCode	string	O	1	A code to indicate the purpose of the attachment.				Template				Other				FileName	string	O	1	The name of the file in an attachment.				AttachmentTitle	string	O	1	The title of the attachment.				AttachmentDescription	string	O	1	A free-form textual description of the attachment.				FileType	string	O	1	The type of the file in an attachment.				AttachmentLocation	string	O	1	The location of the attachment, such as a URL.			
Name	Type	Use	Max																																																										
AttachmentPurposeCode	string	O	1																																																										
A code to indicate the purpose of the attachment.																																																													
Template																																																													
Other																																																													
FileName	string	O	1																																																										
The name of the file in an attachment.																																																													
AttachmentTitle	string	O	1																																																										
The title of the attachment.																																																													
AttachmentDescription	string	O	1																																																										
A free-form textual description of the attachment.																																																													
FileType	string	O	1																																																										
The type of the file in an attachment.																																																													
AttachmentLocation	string	O	1																																																										
The location of the attachment, such as a URL.																																																													
parent(s)	FieldTicketLineItem FieldTicketProperties FieldTicketSubLineItem																																																												

Block

A collection of elements defining the details of a block, which identifies a location.

note				
level	FieldTicketProperties FieldTicketDetails			
children	Name	Type	Use	Max
	BlockName	string	O	1
	The name of the block, which identifies a location.			
	OCSGNumber	string	O	1
	The Outer Continental Shelf Gulf number.			
	StateLease	string	O	1
	Lease on state land.			
parent(s)	GeographicalInformation			

Commodity Code

A code indicating the categorization of a product or service in accordance with a particular standard.

note				
level	FieldTicketDetails			
parent(s)	FieldTicketLineItem FieldTicketSubLineItem			
attributes	Name	Type	Use	Fixed
	agencyIndicator	string	O	
	A code indicating what agency or organization is responsible for defining the commodity code list.			

Contact Identifier

The identifier of the contact person or department.

note				
level	FieldTicketProperties FieldTicketDetails			
parent(s)	ContactInformation			
attributes	Name	Type	Use	Fixed
	contactIdentifierIndicator	string	O	
	A code to identify the origin of the contact identifier.			
	AssignedByBuyer			
	AssignedBySeller			
	EmployeeID	Other		

Contact Information

A collection of elements defining details of communication for a contact person.

note	• It is recommended that ContactInformation be used at either the Property or Detail level, but not both.			
level	FieldTicketProperties FieldTicketDetails			
children	Name	Type	Use	Max
	ContactIdentifier	string	O	1
	The identifier of the contact person or department.			
	ContactName	string	O	1
	The name of the contact person within the organization.			
	ContactDescription	string	O	1
	A free-form textual description of the contact.			
	Telephone		O	U
	A collection of elements detailing information about a telephone number.			
	EmailAddress	string	O	1
	The address assigned to a person or organization to receive electronic messages.			
	AlternativeCommunicationMethod	string	O	U
	Additional methods of communication, such as an IP Address or Printer ID, in addition to those specifically listed elsewhere in contact or address information.			
parent(s)	PartnerInformation			
attributes	Name	Type	Use	Fixed
	contactInformationIndicator	string	M	
	A code indicating the function of the contact.			
	BuyerDepartment			
	DeliveryContact			
	DesignEngineer			
	Engineer			
	EnteredBy			
	FieldRepresentative			
	OfficeRepresentative			
	OrderContact			
	PurchasingAgent			
	QuotePreparer			
	QuoteRequestor			
	RFQContact			
	SalesRepresentative			
	ServiceCoordinator			
	TechnicalMarketingRepresentative			
	Other			

Country Of Final Destination

The country where product is ultimately delivered or is deemed to have been delivered.

note				
level	FieldTicketProperties FieldTicketDetails			
children	Name	Type	Use	Max
	CountryCode	string	M	1
	A code indicating a country.			
	Use the codelist from ISO 3166-1:1997 Codes for the representation of names of countries and their subdivisions – Part 1: Country Codes.			
parent(s)	FieldTicketLineItem FieldTicketProperties FieldTicketSubLineItem			

Country Of Origin

The country where product originates or is deemed to have originated.

note				
level	FieldTicketProperties FieldTicketDetails			
children	Name CountryCode A code indicating a country. Use the codelist from ISO 3166-1:1997 Codes for the representation of names of countries and their subdivisions – Part 1: Country Codes.	Type string	Use M	Max 1
parent(s)	FieldTicketLineItem FieldTicketProperties FieldTicketSubLineItem			

Deferred

The terms for a deferred payment in relation to a transaction.

note				
level	FieldTicketProperties FieldTicketDetails			
children	Name DeferredAmount The monetary amount that is deferred for payment based upon terms in an invoice, contract or agreement. DeferredDueDate The date upon which a deferred payment is due. Format is CCYY-MM-DD where "CC" represents the century, "YY" the year, "MM" the month and "DD" the day. PercentDeferredPayable The amount due that is deferred for payment expressed as a percentage. Description A free-form textual explanation or clarification.	Type date decimal string	Use O O O O	Max 1 1 1 1
parent(s)	PaymentTerms			

DeferredAmount

The monetary amount that is deferred for payment based upon terms in an invoice, contract or agreement.

note				
level	FieldTicketProperties FieldTicketDetails			
children	Name MonetaryAmount The currency value of a transaction or item. CurrencyCode A code indicating the currency in which the monetary amount is specified. Use the codelist from ISO 4217:2001 Codes for the representation of currencies and funds.	Type decimal string	Use M O	Max 1 1
parent(s)	Deferred			

Discount Amount

The monetary amount of a discount based upon payment terms.

note				
level	FieldTicketProperties FieldTicketDetails			
children	Name	Type	Use	Max
	MonetaryAmount The currency value of a transaction or item.	decimal	M	1
children	CurrencyCode A code indicating the currency in which the monetary amount is specified. Use the codelist from ISO 4217:2001 Codes for the representation of currencies and funds.	string	O	1
	parent(s)	Discounts		

Discounted Amount Due

The monetary amount due if paid by terms discount due date (total invoice or installment amount less cash discount.)

note				
level	FieldTicketSummary			
children	Name	Type	Use	Max
	MonetaryAmount The currency value of a transaction or item.	decimal	M	1
children	CurrencyCode A code indicating the currency in which the monetary amount is specified. Use the codelist from ISO 4217:2001 Codes for the representation of currencies and funds.	string	O	1
	parent(s)	FieldTicketSummary		

Discounts

The monetary amount allowed or applied as a credit against a transaction or balance.

note				
level	FieldTicketProperties FieldTicketDetails			
children	Name	Type	Use	Max
	DaysDue The number of days from the payment terms basis date before a discount expires.	integer	O	1
children	DiscountsDueDate The date upon which a discount expires. Format is CCYY-MM-DD where "CC" represents the century, "YY" the year, "MM" the month and "DD" the day.	date	O	1
	PercentDiscount A discount to be applied to the transaction expressed as a percentage.	decimal	O	1
children	DiscountAmount The monetary amount of a discount based upon payment terms.		O	1
	Description A free-form textual explanation or clarification.	string	O	1
parent(s)	PaymentTerms			

Effective Dates

The period of time (or range) where the information is valid or guaranteed.

note				
level	FieldTicketProperties FieldTicketDetails			
children	Name	Type	Use	Max
	FromDate	date	M	1
	The date upon which a time period begins. Format is CCYY-MM-DD where "CC" represents the century, "YY" the year, "MM" the month and "DD" the day.			
children	ToDate	date	M	1
	The date upon which a time period ends. Format is CCYY-MM-DD where "CC" represents the century, "YY" the year, "MM" the month and "DD" the day.			
parent(s)	TaxInformation			

Field Ticket Quantity

The number of units of an item or service consumed.

note				
level	FieldTicketProperties FieldTicketDetails			
children	Name	Type	Use	Max
	Quantity	decimal	M	1
	A numeric count of measure.			
children	UnitOfMeasureCode	string	M	1
	A code identifying the units in which measurement is expressed. Use values from the DE 355 code list contained in ASC X12 release 3030.			
parent(s)	FieldTicketLineItem FieldTicketSubLineItem			

Field Ticket Total

The total monetary amount of the field ticket.

note				
level	FieldTicketSummary			
children	Name	Type	Use	Max
	MonetaryAmount	decimal	M	1
	The currency value of a transaction or item.			
children	CurrencyCode	string	O	1
	A code indicating the currency in which the monetary amount is specified. Use the codelist from ISO 4217:2001 Codes for the representation of currencies and funds.			
parent(s)	FieldTicketSummary			

Geographical Information

A collection of elements defining a geographical location.

note	• If any one of Section, Township, or Range is given then the other two are required.			
level	FieldTicketProperties FieldTicketDetails			
children	Name	Type	Use	Max
	FieldName	string	O	1
	The name of the oil field.			
	Section	string	O	1
	A part of Section/Township/Range location identifier scheme.			
	Township	string	O	1
	A part of Section/Township/Range location identifier scheme.			
	Range	string	O	1
	A part of Section/Township/Range location identifier scheme.			
	Region	string	O	1
	The name of a geographic region.			
	Block		O	1
	A collection of elements defining the details of a block, which identifies a location.			
	GPSCoordinates		O	1
	A collection of elements containing latitude and longitude data for a specific location.			
parent(s)	JobLocationInformation Location			

GPS Coordinates

A collection of elements containing latitude and longitude data for a specific location.

note				
level	FieldTicketProperties FieldTicketDetails			
children	Name	Type	Use	Max
	Latitude	string	M	1
	The specified latitude of a location.			
	Longitude	string	M	1
	The specified longitude of a location.			
parent(s)	GeographicalInformation			

Hazardous Material Class Code

A code indicating the kind of hazard for a material.

note				
level	FieldTicketProperties FieldTicketDetails			
parent(s)	HazardousMaterials			
attributes	Name	Type	Use	Fixed
	hazardousMaterialIndicator	string	M	
	A code which qualifies the Hazardous Material Class Code.			

Hazardous Materials

A collection of elements conveying hazardous goods information related to a product.

note	• If HazardousMaterials is used, then at least one of SpecialHandlingCode or HazardousMaterialDescription is required.			
level	FieldTicketProperties FieldTicketDetails			
children	Name	Type	Use	Max
	SpecialHandlingCode A code identifying any special transportation handling instructions	string	O	1
	HazardousMaterialDescription A free-form textual explanation of information related to a hazardous shipment.	string	O	1
	HazardousMaterialClassCode A code indicating the kind of hazard for a material.	string	O	U
parent(s)	TransportInformation			

Job Location Identifier

A unique identifier referencing the job location.

note				
level	FieldTicketProperties FieldTicketDetails			
parent(s)	JobLocationInformation			
attributes	Name	Type	Use	Fixed
	jobLocationIdentifierIndicator A code to define what type of location the identifier is referencing.	string	O	
	ChemicalPlant	Coal-		
	Degas			
	CogenerationPlant			
	Construction	Dock		
	GasPlant			
	IndustrialServiceMiscellaneous			
	MilitaryGovernment			
	PaperMill			
	PetroleumPlant	Pipeline		
	Refinery	Rig		
	UtilityPlant	Other		

Job Location Information

A collection of elements giving details of a job location.

note				
level	FieldTicketProperties FieldTicketDetails			
children	<p>Name JobLocationIdentifier A unique identifier referencing the job location.</p> <p>JobLocationClassCode A code indicating the class of the job location. FederalWaters Land InlandWaters StateWaters Other</p> <p>JobLocationDescription A free-form textual description of the job location.</p> <p>JobLocationStatus A code indicating whether a location is active or inactive. Inactive Active Other</p> <p>WellInformation A collection of elements detailing information about a well.</p> <p>JobSiteCategory A code indicating the kind of site on which the job is located. Boiler CivilHighways Compression Condenser ConstructPiles Dams HeatExchanger IndustrialServiceMiscellaneous Piping Production TowerVessel Turbine UndergroundStr Other</p> <p>AddressInformation A collection of elements defining the details of an address.</p> <p>GeographicalInformation A collection of elements defining a geographical location.</p>	Type string	Use O	Max U
parent(s)	FieldTicketLineItem FieldTicketProperties FieldTicketSubLineItem			

Line Item Identifier

The unique identifier for a product or service making up the line item.

note				
level	FieldTicketDetails			
parent(s)	LineItemInformation			
attributes	Name	Type	Use	Fixed
	identifierIndicator	string	M	
	A code to indicate the origin of the identifier.			
	AssignedByBuyer			
	AssignedByManufacturer			
	AssignedBySeller			
	CatalogueNumber			
	UPCNumber	Other		

Line Item Information

A collection of elements detailing identifying information about a line item.

note				
level	FieldTicketDetails			
children	Name	Type	Use	Max
	LineItemIdentifier	string	O	U
	The unique identifier for a product or service making up the line item.			
	LineItemName	string	O	1
	The name of the product or service in the line item.			
	LineItemDescription	string	O	1
	A free-form textual description of the line item.			
	ManufacturerIdentifier	string	O	1
	A unique identifier for a manufacturer.			
parent(s)	FieldTicketLineItem FieldTicketSubLineItem			

Line Item Total

The net total monetary amount for the line item.

note				
level	FieldTicketDetails			
children	Name	Type	Use	Max
	MonetaryAmount	decimal	M	1
	The currency value of a transaction or item.			
	CurrencyCode	string	O	1
	A code indicating the currency in which the monetary amount is specified.			
	Use the codelist from ISO 4217:2001 Codes for the representation of currencies and funds.			
parent(s)	FieldTicketLineItem FieldTicketSubLineItem			

Location

A collection of elements giving details about a location.

note				
level	FieldTicketProperties FieldTicketDetails			
children	Name	Type	Use	Max
	LocationIdentifier	string	O	1
	A unique identifier for a physical location.			
	LocationName	string	O	1
	The name of the location being referenced.			
	AddressInformation		O	1
	A collection of elements defining the details of an address.			
	GeographicalInformation		O	1
	A collection of elements defining a geographical location.			
	LocationDescription	string	O	1
	Free-form textual description of the location.			
parent(s)	TransportInformation			
attributes	Name	Type	Use	Fixed
	locationIndicator	string	O	
	A code to identify what kind of location is being referenced.			
	FreightEqualizationPoint			
	OnVessel-FOBPoint			
	AssignedBySeller	Origin-		
	AfterLoadingOnEquipment	Origin-		
	ShippingPoint	Plant		
	ShippingDestination			
	Warehouse	Other		

Measurement Range

A collection of elements providing a minimum and maximum measurement to create a range.

note				
level	FieldTicketProperties FieldTicketDetails			
children	Name	Type	Use	Max
	MinimumMeasurement	decimal	M	1
	The smallest measurement in a given range.			
	MaximumMeasurement	decimal	M	1
	The largest measurement in a given range.			
parent(s)	PriceBasis			


Partner Identifier

A unique identifier indicating a particular partner or organization.

note				
level	FieldTicketProperties FieldTicketDetails			
parent(s)	PartnerInformation			
attributes	Name	Type	Use	Fixed
	partnerIdentifierIndicator	string	M	
	A code to identify the origin of the Partner Identifier.			
	AssignedByBuyer			
	AssignedBySeller			
	DUNSNumber			
	DUNS+4Number	Other		

Partner Information

A collection of elements detailing partner information.

note				
level	FieldTicketProperties FieldTicketDetails			
children	Name PartnerIdentifier A unique identifier indicating a particular partner or organization. PartnerName The name of the organization being referenced in Partner Information. AddressInformation A collection of elements defining the details of an address. ContactInformation A collection of elements defining details of communication for a contact person. TaxInformation A collection of elements detailing tax information about a partner. URL A Uniform Resource Locator indicating an internet address.	Type string string string string string string	Use M O O O O O	Max U 1 1 U 1 1
parent(s)	FieldTicketLineItem FieldTicketProperties FieldTicketSubLineItem TransportInformation			
attributes	Name partnerRoleIndicator A code to indicate the role in this transaction of the partner being referenced. BillAndShipTo 	Type string	Use M	Fixed

Payment Terms

A collection of elements detailing payment terms information.

note	<ul style="list-style-type: none"> • If either one of PercentDiscount or DiscountAmount is used, then at least one of DiscountsDueDate or DaysDue is required. • If DeferredDueDate is used, then at least one of DeferredAmountDue or PercentOfInvoicePayable is required. 			
level	FieldTicketProperties FieldTicketDetails			
children	<p>Name</p> <p>PaymentTermsOfSale The terms on which payment is calculated for the transaction.</p> <p>Description A free-form textual explanation or clarification.</p> <p>PaymentTermsBasisDateCode A code identifying the beginning of the terms period.</p> <p>DeliveryDate</p> <p>InvoiceDate</p> <p>InvoiceReceiptDate Other</p> <p>PaymentTermsBasisDate The date from which payment terms or discounts are calculated or based. Format is CCYY-MM-DD where "CC" represents the century, "YY" the year, "MM" the month and "DD" the day.</p> <p>TermsNetDays The number of days until the total invoice amount is due (discount not applicable).</p> <p>PercentOfInvoicePayable The amount of an invoice payable expressed as a percentage.</p> <p>Discounts The monetary amount allowed or applied as a credit against a transaction or balance.</p> <p>Deferred The terms for a deferred payment in relation to a transaction.</p> <p>Penalty A percentage used to calculate the penalty on any balance unpaid by the due date.</p>	Type	Use	Max
		string	O	1
		string	O	1
		string	O	1
		Other		
		date	O	1
		integer	O	1
		decimal	O	1
			O	1
			O	1
		string	O	1
parent(s)	FieldTicketLineItem FieldTicketProperties FieldTicketSubLineItem			

Personnel Information

A collection of elements detailing relevant personnel information.

note				
level	FieldTicketDetails			
children	<p>Name</p> <p>PersonnelName The name of the person being referenced.</p> <p>CompanyName The name of the company.</p> <p>PersonnelIdentifier A unique identifier for an employee of an organization.</p> <p>TimeWorked The time period worked by a specific employee completing a service.</p> <p>JobDescription A free-form textual description of the job.</p> <p>Comment A free-form textual structure for general information or comments.</p>	Type	Use	Max
		string	O	1
		string	O	1
		string	O	1
			O	1
		string	O	1
		string	O	1
parent(s)	FieldTicketLineItem			

	FieldTicketSubLineItem
--	--

Postal Country

The country code indicating the country to which mail should be delivered.

note				
level	FieldTicketProperties FieldTicketDetails			
children	Name CountryCode A code indicating a country. Use the codelist from ISO 3166-1:1997 Codes for the representation of names of countries and their subdivisions – Part 1: Country Codes.	Type string	Use M	Max 1
parent(s)	AddressInformation			

Price Basis

A structure allowing for a price to be based on more than just a single unit of measure.

note				
level	FieldTicketDetails			
children	Name Measurement A numeric value for technical or attribute data. MeasurementRange A collection of elements providing a minimum and maximum measurement to create a range. UnitOfMeasureCode A code identifying the units in which measurement is expressed. Use values from the DE 355 code list contained in ASC X12 release 3030. BasisDescription Free-form textual description of the basis.	Type decimal string string	Use O M O	Max 1 1 1 1
parent(s)	Pricing			

Pricing

A collection of elements detailing price information.

note				
level	FieldTicketDetails			
children	Name UnitPrice The unit price of the product or service being sold. PriceBasis A structure allowing for a price to be based on more than just a single unit of measure.	Type	Use M O	Max 1 U
parent(s)	FieldTicketLineItem FieldTicketSubLineItem			

Primary Currency

The currency code indicating the currency to be used for the transaction.

note				
level	FieldTicketProperties			
children	Name CurrencyCode A code indicating the currency in which the monetary amount is specified. Use the codelist from ISO 4217:2001 Codes for the representation of currencies	Type string	Use M	Max 1

	and funds.
parent(s)	FieldTicketProperties

Purchase Order Information

A collection of elements containing relevant purchase order information which needs to be referenced within other documentation and/or messages.

note																																																																													
level	FieldTicketProperties FieldTicketDetails																																																																												
children	<table border="1"> <thead> <tr> <th>Name</th> <th>Type</th> <th>Use</th> <th>Max</th> </tr> </thead> <tbody> <tr> <td>PurchaseOrderNumber</td> <td>string</td> <td>M</td> <td>1</td> </tr> <tr> <td colspan="4">A unique identifier for an Order Create message.</td> </tr> <tr> <td>PurchaseOrderIssuedDate</td> <td>date</td> <td>O</td> <td>1</td> </tr> <tr> <td colspan="4">The date upon which an order was created or deemed to have been issued. Format is CCYY-MM-DD where "CC" represents the century, "YY" the year, "MM" the month and "DD" the day.</td> </tr> <tr> <td>PurchaseOrderTypeCode</td> <td>string</td> <td>O</td> <td>1</td> </tr> <tr> <td colspan="4">A code indicating the kind of purchase order.</td> </tr> <tr> <td>Confirmation</td> <td></td> <td></td> <td></td> </tr> <tr> <td>EmergencyOrder</td> <td></td> <td></td> <td></td> </tr> <tr> <td>ReleaseOrDeliveryOrder</td> <td></td> <td></td> <td></td> </tr> <tr> <td>RushOrder</td> <td></td> <td></td> <td></td> </tr> <tr> <td>StandAloneOrder</td> <td></td> <td></td> <td></td> </tr> <tr> <td>SupplyOrServiceOrder</td> <td>Other</td> <td></td> <td></td> </tr> <tr> <td>ReleaseNumber</td> <td>string</td> <td>O</td> <td>1</td> </tr> <tr> <td colspan="4">A number identifying a release against a purchase order previously placed by the parties involved in the transaction. It is the equivalent to a work order number.</td> </tr> <tr> <td>SalesOrderNumber</td> <td>string</td> <td>O</td> <td>1</td> </tr> <tr> <td colspan="4">The identifier assigned by a supplier to an order placed by a customer.</td> </tr> <tr> <td>RevisionNumber</td> <td>string</td> <td>O</td> <td>1</td> </tr> <tr> <td colspan="4">A number indicating the version of the document. It is used if a message is resent in its entirety to replace an earlier version.</td> </tr> </tbody> </table>	Name	Type	Use	Max	PurchaseOrderNumber	string	M	1	A unique identifier for an Order Create message.				PurchaseOrderIssuedDate	date	O	1	The date upon which an order was created or deemed to have been issued. Format is CCYY-MM-DD where "CC" represents the century, "YY" the year, "MM" the month and "DD" the day.				PurchaseOrderTypeCode	string	O	1	A code indicating the kind of purchase order.				Confirmation				EmergencyOrder				ReleaseOrDeliveryOrder				RushOrder				StandAloneOrder				SupplyOrServiceOrder	Other			ReleaseNumber	string	O	1	A number identifying a release against a purchase order previously placed by the parties involved in the transaction. It is the equivalent to a work order number.				SalesOrderNumber	string	O	1	The identifier assigned by a supplier to an order placed by a customer.				RevisionNumber	string	O	1	A number indicating the version of the document. It is used if a message is resent in its entirety to replace an earlier version.			
Name	Type	Use	Max																																																																										
PurchaseOrderNumber	string	M	1																																																																										
A unique identifier for an Order Create message.																																																																													
PurchaseOrderIssuedDate	date	O	1																																																																										
The date upon which an order was created or deemed to have been issued. Format is CCYY-MM-DD where "CC" represents the century, "YY" the year, "MM" the month and "DD" the day.																																																																													
PurchaseOrderTypeCode	string	O	1																																																																										
A code indicating the kind of purchase order.																																																																													
Confirmation																																																																													
EmergencyOrder																																																																													
ReleaseOrDeliveryOrder																																																																													
RushOrder																																																																													
StandAloneOrder																																																																													
SupplyOrServiceOrder	Other																																																																												
ReleaseNumber	string	O	1																																																																										
A number identifying a release against a purchase order previously placed by the parties involved in the transaction. It is the equivalent to a work order number.																																																																													
SalesOrderNumber	string	O	1																																																																										
The identifier assigned by a supplier to an order placed by a customer.																																																																													
RevisionNumber	string	O	1																																																																										
A number indicating the version of the document. It is used if a message is resent in its entirety to replace an earlier version.																																																																													
parent(s)	FieldTicketLineItem FieldTicketProperties FieldTicketSubLineItem																																																																												

Reference Information

A collection of elements detailing references to information that reside outside of the current transaction message.

note	• It is recommended that ReferenceInformation be used at either the Property or Detail level, but not both.			
level	FieldTicketProperties FieldTicketDetails			
children	Name ReferenceNumber A number or identifier that is used to reference documents or information not included within a particular message. The referenceInformationIndicator attribute qualifies what this number references Description A free-form textual explanation or clarification.	Type	Use	Max
		string	M	1
		string	O	1
parent(s)	FieldTicketLineItem FieldTicketProperties FieldTicketSubLineItem			
attributes	Name referenceInformationIndicator A code to identify what type of information is being referenced. AFENumber BatchNumber BillOfLading Certification CertifiedInspectionTestResults ConfigurationNumber ContractNumber CostAllocationReference CostCenter CustomerAccountingReference CustomerReferenceNumber DeliveryTicketNumber DivisionIdentifier EngineeringChangeOrderNumber JobNumber LetterOfCreditNumber LocationNumber MaterialSafetyDataSheet OperatorGeneralLedgerCode OriginalInvoiceNumber PriceAreaNumber ProjectNumber ProposalNumber QuoteNumber RequestForQuotationNumber TemplateName	Type	Use	Fixed
		string	M	
				Other

Second Currency

The currency code indicating a second currency, such as for European countries using the Euro and a local currency.

note				
level	FieldTicketProperties			
children	Name	Type	Use	Max
	CurrencyCode	string	M	1
	A code indicating the currency in which the monetary amount is specified. Use the codelist from ISO 4217:2001 Codes for the representation of currencies and funds.			
parent(s)	FieldTicketProperties			

Service Date Time

The actual and/or schedule dates for a service.

note	<p>Format is CCYY-MM-DDThh:mm:ss where "CC" represents the century, "YY" the year, "MM" the month and "DD" the day. The letter "T" is the date/time separator and "hh", "mm", "ss" represent hour, minute and second respectively.</p> <p>The CCYY field must have at least four digits, the MM, DD, SS, hh, mm and ss fields exactly two digits each. Leading zeroes must be used if the field would otherwise have too few digits.</p> <p>If no time is to be given then use zeroes in the hh, mm and ss fields.</p> <p>This representation may be immediately followed by a "Z" to indicate Coordinated Universal Time (UTC) or, to indicate the time zone, i.e. the difference between the local time and Coordinated Universal Time, immediately followed by a sign, + or -, followed by the difference from UTC represented as hh:mm (note: the minutes part is required). For example, to indicate 1:20 pm on May the 31st, 1999 for Eastern Standard Time which is 5 hours behind Coordinated Universal Time (UTC), one would write: 1999-05-31T13:20:00-05:00.</p>			
level	FieldTicketProperties FieldTicketDetails			
parent(s)	FieldTicketLineItem FieldTicketProperties FieldTicketSubLineItem			
attributes	Name	Type	Use	Fixed
	dateTypeIndicator	string	M	
	A code to identify which date being given.			
	ArriveLocationDate			
	InvoiceDueDate			
	InvoicePeriodStartDate			
	LeaveLocationDate			
	PromisedForDelivery			
	PromisedForShipment			
	RequestedForDelivery			
	RequestedForShipment			
	ServicePeriodEnd			
	ServicePeriodStart	ShipDate		
	Other			

Shipping Amount

The monetary amount of shipping or freight charges.

note				
level	FieldTicketDetails FieldTicketSummary			
children	Name	Type	Use	Max
	Monetary Amount The currency value of a transaction or item.	decimal	M	1
parent(s)	CurrencyCode A code indicating the currency in which the monetary amount is specified. Use the codelist from ISO 4217:2001 Codes for the representation of currencies and funds.	string	O	1
	FieldTicketLineItem FieldTicketSubLineItem FieldTicketSummary			

Special Instructions

A free-form textual description of special requirements.

note				
level	FieldTicketProperties FieldTicketDetails			
parent(s)	FieldTicketLineItem FieldTicketProperties FieldTicketSubLineItem			
attributes	Name	Type	Use	Fixed
	instructionIndicator A code to identify the type of instruction being given.	string	O	
	CarrierInstructions			
	ConsigneeInstructions			
	DriverInstructions			
	EmptyReturnInstructions			
	InspectionInstructions			
	RoutingInstructions			
	ShipperInstructions			
	ShortLeadTime			
	Tolerances	Other		

Sub Total Amount

The monetary amount of the subtotal. It is qualified by the subTotalIndicator attribute which identifies what the subtotal is referencing.

note				
level	FieldTicketSummary			
children	Name	Type	Use	Max
	Monetary Amount The currency value of a transaction or item.	decimal	M	1
	CurrencyCode A code indicating the currency in which the monetary amount is specified. Use the codelist from ISO 4217:2001 Codes for the representation of currencies and funds.	string	O	1
parent(s)	FieldTicketSummary			
attributes	Name	Type	Use	Fixed
	subTotalIndicator A code to indicate the type of subtotal being given.	string	M	
	Equipment	Labor		
	Materials	Other		

Tax

A collection of elements detailing information about tax applied to a transaction.

note	<ul style="list-style-type: none"> It is recommended that Tax be used at the Detail level to support tax exemptions. However, many systems cannot provide detail-level Tax information at this time, therefore, Tax is not mandatory at the detail level. 			
level	FieldTicketDetails FieldTicketSummary			
children	<p>Name</p> <p>TaxTypeCode</p> <p>A code indicating the kind of tax being applied.</p> <p>CitySalesTax</p> <p>CountyParishSalesTax</p> <p>CountyTax</p> <p>FederalExciseTax</p> <p>GoodsAndServicesTax</p> <p>GrossReceiptsTax</p> <p>MetropolitanTransitTax</p> <p>StateAndLocalSalesTax</p> <p>StateProvincialTax</p> <p>StateSalesTax</p> <p>ValueAddedTax</p> <p>WellServiceTax</p> <p>MixedRateIndicator</p> <p>A mixed rate VAT tax indicator. This is used for European tax purposes.</p> <p>TaxIdentifierNumber</p> <p>A unique number or code issued to an organization by a governmental or regulatory body identifying that entity for tax purposes.</p> <p>TaxExemptCode</p> <p>A code identifying exemption status from sales and use tax.</p> <p>DirectPay</p> <p>NonExempt</p> <p>TaxLocation</p> <p>The physical or deemed location at which tax is calculated based upon jurisdiction by a governmental or regulatory body.</p> <p>TaxRate</p> <p>The percentage or monetary amount charged on a transaction.</p> <p>TaxBasisAmount</p> <p>The monetary amount which is subject to tax.</p> <p>TaxAmount</p> <p>The monetary amount of the tax.</p> <p>TaxReference</p> <p>A free-form textual explanation or clarification.</p>	<p>Type</p> <p>string</p> <p>LocalTax</p> <p>Other</p> <p>string</p> <p>string</p> <p>string</p> <p>Exempt</p> <p>Other</p> <p>decimal</p> <p>string</p>	<p>Use</p> <p>M</p> <p>O</p> <p>O</p> <p>O</p> <p>O</p> <p>O</p> <p>O</p> <p>O</p> <p>O</p> <p>O</p> <p>O</p> <p>O</p> <p>O</p>	<p>Max</p> <p>1</p> <p>1</p> <p>1</p> <p>1</p> <p>1</p> <p>1</p> <p>1</p> <p>1</p> <p>1</p> <p>1</p> <p>1</p> <p>1</p> <p>1</p> <p>1</p> <p>1</p> <p>1</p> <p>1</p>
parent(s)	FieldTicketLineItem FieldTicketSubLineItem FieldTicketSummary			

Tax Amount

The monetary amount of the tax.

note				
level	FieldTicketDetails FieldTicketSummary			
children	Name	Type	Use	Max
	Monetary Amount The currency value of a transaction or item.	decimal	M	1
children	CurrencyCode A code indicating the currency in which the monetary amount is specified. Use the codelist from ISO 4217:2001 Codes for the representation of currencies and funds.	string	O	1
	parent(s)	Tax		

Tax Basis Amount

The monetary amount which is subject to tax.

note				
level	FieldTicketDetails FieldTicketSummary			
children	Name	Type	Use	Max
	Monetary Amount The currency value of a transaction or item.	decimal	M	1
children	CurrencyCode A code indicating the currency in which the monetary amount is specified. Use the codelist from ISO 4217:2001 Codes for the representation of currencies and funds.	string	O	1
	parent(s)	Tax		

Tax Information

A collection of elements detailing tax information about a partner.

note				
level	FieldTicketProperties FieldTicketDetails			
children	Name	Type	Use	Max
	TaxIdentifierNumber A unique number or code issued to an organization by a governmental or regulatory body identifying that entity for tax purposes.	string	O	1
children	Jurisdiction The authority exercised by a nation, a judicial body, or a legislative body over persons, places, and property. Jurisdiction may apply to the territory over which a nation has control, including the land area, the adjacent sea, and the airspace above. It may also refer to the authority of an international body to make decisions binding on national entities.	string	O	1
	TaxCertificateType The category of tax certificate for which an identifying number is issued.	string	O	1
children	TaxCertificateNumber The identifying number for a tax certificate such as tax exemption, sales and use tax certificate or other such document.	string	O	1
	parent(s)	PartnerInformation		

TaxLocation

The physical or deemed location at which tax is calculated based upon jurisdiction by a governmental or regulatory body.

note	
------	--

level	FieldTicketDetails FieldTicketSummary			
children	Name	Type	Use	Max
	LocationIdentifier	string	O	1
	A unique identifier for a physical location.			
	LocationName	string	O	1
	The name of the location being referenced.			
children	LocationDescription	string	O	1
	Free-form textual description of the location.			
	AddressInformation		O	1
A collection of elements defining the details of an address.				
parent(s)	Tax			

Telephone

A collection of elements detailing information about a telephone number.

note				
level	FieldTicketProperties FieldTicketDetails			
children	Name	Type	Use	Max
	PhoneNumber	string	M	1
	A numerical sequence to reach a telephone attached to a communication network.			
	PhoneNumberExtension	string	O	1
	An extension number that is needed to further identify the phone number.			
children	TelecomCountryCode	string	O	1
	The dialing code from another country to access the telephone network in another country.			
	TelecomAreaCode	string	O	1
The area code within a country or jurisdiction, if needed, to access local telephones within the country.				
parent(s)	ContactInformation			
attributes	Name	Type	Use	Fixed
	telephoneIndicator	string	O	
	A code to indicate the type of phone number being given.			
	Fax	Mobile		
Pager	Voice			
Other				

Terms Discount Amount

The total monetary amount of the payment terms discount.

note				
level	FieldTicketSummary			
children	Name	Type	Use	Max
	MonetaryAmount	decimal	M	1
	The currency value of a transaction or item.			
	CurrencyCode	string	O	1
	A code indicating the currency in which the monetary amount is specified. Use the codelist from ISO 4217:2001 Codes for the representation of currencies and funds.			
parent(s)	FieldTicketSummary			

Time Worked

The time period worked by a specific employee completing a service.

note				
level	FieldTicketDetails			
children	Name	Type	Use	Max
	Quantity	decimal	M	1
	A numeric count of measure.			
	UnitOfMeasureCode	string	M	1
	A code identifying the units in which measurement is expressed. Use values from the DE 355 code list contained in ASC X12 release 3030.			
parent(s)	PersonnelInformation			

Transport Information

A collection of elements detailing how product is transported.

note	• If TransportInformation is used, then at least one of TransportMethodCode, Routing, or ServiceLevelCode is required.			
level	FieldTicketProperties FieldTicketDetails			
children	Name	Type	Use	Max
	ShipmentMethodOfPayment A code indicating payment terms for transportation charges.	string	M	1
	Collect	Collect-		
	FreightCreditedBackToCustomer			
	CustomerPickupBackhaul	Pickup		
	PrepaidBySeller	Prepaid-		
	ChargedToCustomer	ServiceFreight-		
	NoCharge	ThirdPartyPay		
	Other			
	RoutingSequenceCode A code indicating the relationship of a carrier to a specific shipment movement.	string	O	1
	OriginCarrier-AirMotorOcean			
	OriginDeliveryCarrier-AnyMode			
	Other			
	TransportMethodCode A code indicating the mode of transportation used to move product.	string	O	1
	Air			
	AirExpress	Barge		
	BestWay-ShippersOption	Boat		
	CustomerPickup			
	ExpeditedTruck	Motor-		
	CommonCarrier	Ocean		
	ParcelPost	Rail		
	SupplierTruck	Truck		
	Vessel	Other		
	PartnerInformation A collection of elements detailing partner information.		O	U
	Location A collection of elements giving details about a location.		O	U
	ShipmentTermsCode A code indicating the terms under which a product is shipped, such as Freight Prepaid, FOB or similar.	string	O	1
	Routing A free-form description of the shipping route to be provided for transportation of product.	string	O	1
	ServiceLevelCode A code indicating the level of service required.	string	O	1
	HazardousMaterials A collection of elements conveying hazardous goods information related to a product.		O	1
	CarrierEquipmentCode A code indicating the kind of equipment parent(s) the carrier.	string	O	1
	TransportName	string	O	1

	The identifier of specific vessel, truck, railcar, etc.
parent(s)	FieldTicketLineItem FieldTicketProperties FieldTicketSubLineItem

Unit Price

A collection of elements detailing how product is transported.

note				
level	FieldTicketDetails			
children	Name	Type	Use	Max
	MonetaryAmount	decimal	M	1
	The currency value of a transaction or item.			
	UnitOfMeasureCode	string	M	1
	A code identifying the units in which measurement is expressed. Use values from the DE 355 code list contained in ASC X12 release 3030.			
children	CurrencyCode	string	O	1
	A code indicating the currency in which the monetary amount is specified. Use the codelist from ISO 4217:2001 Codes for the representation of currencies and funds.			
parent(s)	Pricing			

Well Identifier

A unique identifier referencing a well, such as PIDX or UWI number.

note				
level	FieldTicketProperties FieldTicketDetails			
parent(s)	WellInformation			
attributes	Name	Type	Use	Fixed
	wellIdentifierIndicator	string	O	
	A code to indicate the origin of the Well Identifier.			
	PIDXNumber			
	CustomerNumber			
UWINumber	Other			

Well Information

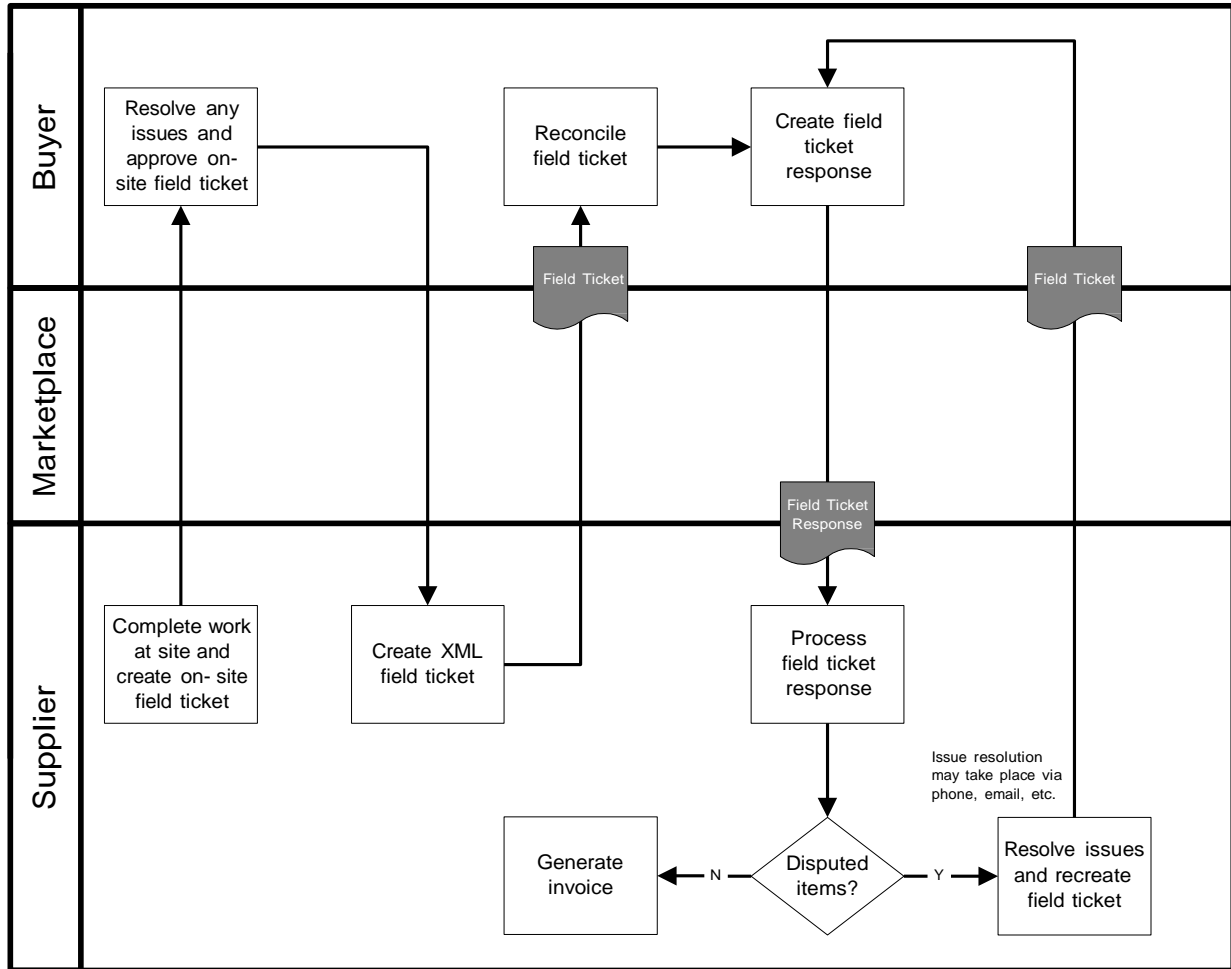
A collection of elements detailing information about a well.

note				
level	FieldTicketProperties FieldTicketDetails			
children	<p>Name WellIdentifier A unique identifier referencing a well, such as an PIDX or UWI number.</p> <p>WellName string O 1 The customer name of a well.</p> <p>WellType string O 1 A code indicating the function of the well.</p> <p>Brine DirectionalGas DirectionalNonWell DirectionalOil DisposalWell Environmental Gas HorizontalGas HorizontalOil IndustrialDisposal IndustrialNonWell Injection NonWell Oil Relief Storage Sulfur Thermal Uranium Water Other</p> <p>WellCategory string O 1 A code indicating the category of a well.</p> <p>Abandoned DevBelow3000 Development ExistingWell NonWell ReacidizeWell Recompletion RefractedWell Wildcat Workover Other</p>			
parent(s)	JobLocationInformation			

2.0 Field Ticket Response

2.1 Business Process Diagram

Below is the Business Process Diagram for the Field Ticket Response transaction. This is not the only method in which the process can take place; however, it represents a primary process. Third parties, including a Marketplace, may be involved if necessary.



Process Model - A Seller completes work at a customer site. An on-site field ticket is generated and given to the Buyer for approval. The Buyer approves the field ticket, indicating any changes that might be necessary on the field ticket. The seller uses the on-site field ticket information to create an XML field ticket and sends it to the Buyer. The Buyer processes the XML field ticket and sends a response accepting or disputing the field ticket information in whole or in part. Any disputes are handled by phone, email, etc. If necessary, once disputes are resolved, a corrected field ticket is generated and sent to the Buyer.

The Field Ticket Response document is used to accept or dispute the information provided by the XML Field Ticket, which is an electronic record of the work completed by the Seller at the Buyer's site.

2.2 Legend to Tables

The following tables detail the elements and attributes that make up the Field Ticket Response. The legend below provides guidance to understanding the element tables. The legend is an example only and is not part of the document standard data.

Telephone ¹
A collection of elements detailing information about a telephone number. ²

³ note																					
level	OrderCreateProperties OrderCreateDetails																				
children	<table border="1"> <thead> <tr> <th>Name</th> <th>Type</th> <th>Use</th> <th>Max</th> </tr> </thead> <tbody> <tr> <td>PhoneNumber ⁵</td> <td>string ⁷</td> <td>M</td> <td>1</td> </tr> <tr> <td>PhoneNumberExtension</td> <td>string</td> <td>O</td> <td>1</td> </tr> <tr> <td>TelecomCountryCode</td> <td>string</td> <td>O</td> <td>1</td> </tr> <tr> <td>TelecomAreaCode</td> <td>string</td> <td>O</td> <td>1</td> </tr> </tbody> </table>	Name	Type	Use	Max	PhoneNumber ⁵	string ⁷	M	1	PhoneNumberExtension	string	O	1	TelecomCountryCode	string	O	1	TelecomAreaCode	string	O	1
Name	Type	Use	Max																		
PhoneNumber ⁵	string ⁷	M	1																		
PhoneNumberExtension	string	O	1																		
TelecomCountryCode	string	O	1																		
TelecomAreaCode	string	O	1																		
parent(s)	ContactInformation																				
attributes	<table border="1"> <thead> <tr> <th>Name</th> <th>Type</th> <th>Use</th> <th>Fixed</th> </tr> </thead> <tbody> <tr> <td>telephoneIndicator ¹⁰</td> <td>string</td> <td>O</td> <td></td> </tr> <tr> <td>Fax</td> <td>Mobile</td> <td></td> <td></td> </tr> <tr> <td>Pager</td> <td>Voice</td> <td></td> <td></td> </tr> <tr> <td>Other</td> <td></td> <td></td> <td></td> </tr> </tbody> </table>	Name	Type	Use	Fixed	telephoneIndicator ¹⁰	string	O		Fax	Mobile			Pager	Voice			Other			
Name	Type	Use	Fixed																		
telephoneIndicator ¹⁰	string	O																			
Fax	Mobile																				
Pager	Voice																				
Other																					

Legend	
1	The name of the element.
2	The definition of the element.
3	Contains any business rules or comments about the element
4	Identifies whether or not the element is under the Property, Detail, or Summary level of the document
5	Contains the name of the child elements and their definitions. Those elements in blue are links to the element specification. Only those elements that contain children or attributes are hyperlinked.
6	Indicates the data type of the element.
7	Indicates whether the element is mandatory (M) or optional (O).
8	Indicates whether the element can have a maximum of one occurrence (1) or unbounded multiple occurrences
9	Indicates the parent element of the element.
10	Contains the name of any attributes and their definitions.
11	Indicates the data type of the attribute. If the type is blank, then the element contains children rather than data.
12	Indicates whether the attribute is mandatory (M) or optional (O).
13	Provides a fixed value for the attribute.
14	The shaded areas provide either code list values, rules, or notes about the child element or attribute.

The document, its properties, details, line item, sub-line item, and summary elements are presented first. They are followed by an alphabetical listing of those elements used in the document and have children or attributes.

2.3 Document Detail

Field Ticket Response

The root element of the Field Ticket Response message. It is used to acknowledge a previously sent Field Ticket.

note		Type	Use	Max
children	Name			
	FieldTicketResponseProperties		M	1
	A collection of elements defining the acknowledgement "meta-data" or "common data".			
	FieldTicketResponseDetails		M	1
	A collection of elements defining the details of the Field Ticket Response message.			
	FieldTicketResponseSummary		M	1
	A collection of elements detailing the totals of the acknowledgement.			
attributes	Name	Type	Use	Fixed
	transactionPurposeIndicator	string	M	
	A code indicating the purpose of the transaction. Add			
	Cancellation	Change		
	Confirmation	Delete		
	Duplicate	Original		
	Replace	Request		
Other				
version	decimal	M	1.0	
	A fixed number indicating the version of the PIDX XML Standard on which the transaction is based.			

Field Ticket Response Properties

A collection of elements defining the response "meta-data" or "common data".

note		Type	Use	Max	
children	Name				
	FieldTicketResponseNumber	string	M	1	
	A unique identifier for a Field Ticket Response message.				
	FieldTicketResponseDate	date	M	1	
	The date upon which an acknowledgement was created or deemed to have been issued.				
	Format is CCYY-MM-DD where "CC" represents the century, "YY" the year, "MM" the month and "DD" the day.				
	PartnerInformation			M	U
	A collection of elements detailing partner information.				
	FieldTicketInformation			M	1
	A collection of elements containing relevant field ticket information which needs to be referenced within other documentation and/or messages.				
	ApproverName	string	O	1	
	The name of the person who approved the document.				
	ApprovalDate	date	O	1	
	The date upon which the document was approved.				
	Format is CCYY-MM-DD where "CC" represents the century, "YY" the year, "MM" the month and "DD" the day.				
	CountryOfFinalDestination			O	1
	The country where product is ultimately delivered or is deemed to have been delivered.				
	RevisionNumber	string	O	1	
	A number indicating the version of the document. It is used if a message is resent in its entirety to replace an earlier version.				
	PurchaseOrderInformation			O	1
	A collection of elements containing relevant purchase order information which needs to be referenced within other documentation and/or messages.				
	PurchaseOrderLineItemNumber	string	O	1	
	A sequential individual line identifier within a purchase order document containing product or item information.				
PrimaryCurrency			O	1	
The currency code indicating the currency to be used for the transaction.					
SecondCurrency			O	1	
The currency code indicating a second currency, such as for European countries using the Euro and a local currency.					
ServiceDateTime	datetime	O	U		
The actual and/or schedule dates for a service.					
LanguageCode	string	O	1		
A code indicating the language used for the transaction.					
Use the codelist from ISO 639-2:1998 Codes for the representation of names of languages – Part 2: Alpha-3 Code.					
JobLocationInformation			O	1	
A collection of elements giving details of a job location.					
JobSummary	string	O	1		
A free-form textual summary of the job.					
CountryOfOrigin			O	1	
The country where product originates or is deemed to have originated.					
TransportInformation			O	1	
A collection of elements detailing how product is transported.					
PaymentTerms			O	1	
A collection of elements detailing payment terms information.					
SpecialInstructions	string	O	U		
A free-form textual description of special requirements.					

	ReferenceInformation A collection of elements detailing references to information that reside outside of the current transaction message.		O	U
	Attachment A collection of elements defining the details of an attachment to the document.		O	U
	Comment A free-form textual structure for general information or comments.	string	O	1
parent(s)	FieldTicketResponse			

Field Ticket Response Details

A collection of elements defining the details of the Field Ticket Response message.

note				
children	Name FieldTicketResponseLineItem A collection of elements defining the details of the line items making up the acknowledgement.	Type	Use	Max
			M	U
parent(s)	FieldTicketResponse			

Field Ticket Response Line Item

A collection of elements defining the details of the line items making up the acknowledgement.

note		Type	Use	Max	
children	Name				
	LineItemNumber	string	M	1	
	A sequential individual line identifier within a document containing service or item information.				
	LineStatusCode	string	M	1	
	A code which indicates the whether a line item has been approved, rejected, or is pending.				
	Accept	Pending			
	Reject	Other			
	LineResponseReasonCode	string	M	1	
	A code indicating the response to the line item, such as accepted, rejected, etc.				
	ChangeDescription	string	O	1	
	A free-form textual description of changes made.				
	LineItemInformation			M	1
	A collection of elements detailing identifying information about a line item.				
	FieldTicketQuantity			M	1
	The number of units of an item or service consumed.				
	CommodityCode	string	O	U	
	A code indicating the categorization of a product or service in accordance with a particular standard.				
	PurchaseOrderLineItemNumber	string	O	1	
	A sequential individual line identifier within a purchase order document containing product or item information.				
	PurchaseOrderInformation			O	1
	A collection of elements containing relevant purchase order information which needs to be referenced within other documentation and/or messages.				
	PersonnelInformation			O	U
	A collection of elements detailing relevant personnel information.				
	PartnerInformation			O	U
	A collection of elements detailing partner information.				
	JobLocationInformation			O	1
	A collection of elements giving details of a job location.				
	Pricing			O	1
	A collection of elements detailing price information.				
	AllowanceOrCharge			O	U
A collection of elements defining the details of an allowance or charge to the customer.					
Tax			O	U	
A collection of elements detailing information about tax applied to a transaction.					
ShippingAmount			O	1	
The monetary amount of shipping or freight charges.					
LineItemTotal			O	1	
The net total monetary amount for the line item.					
ServiceDateTime	datetime	O	U		
The actual and/or schedule dates for a service.					
EquipmentIdentifier	string	O	U		
A unique identifier for a piece of equipment such as used for transportation of product.					
EquipmentDescription	string	O	U		
A free-form textual description of carrier equipment.					
CountryOfOrigin			O	1	
The country where product originates or is deemed to have originated.					

	CountryOfFinalDestination		O	1
	The country where product is ultimately delivered or is deemed to have been delivered.			
	TransportInformation		O	1
	A code indicating the mode of transportation used to move product.			
	PaymentTerms		O	1
	A collection of elements detailing payment terms information.			
	SpecialInstructions	string	O	U
	A free-form textual description of special requirements.			
	PackagingCharacteristicCode	string	O	U
	A code indicating the marking, packaging, loading and related characteristics being described.			
	PackageSpecifications			
	ProductMarking			
	SkidPalletType			
	TypeOfPackage	Other		
	PackagingCharacteristicDescription	string	O	U
	Free-form text providing any additional information associated with the Packaging Characteristic Code.			
	ReferenceInformation		O	U
	A collection of elements detailing references to information that reside outside of the current transaction message.			
	Attachment		O	U
	A collection of elements defining the details of an attachment to the document.			
	Comment	string	O	1
	A free-form textual structure for general information or comments.			
	FieldTicketResponseSubLineItem		O	U
	A collection of elements defining the details of the sub line items of an acknowledgement. It is used if a line item needs to be broken down into further detail.			
parent(s)	FieldTicketResponseDetails			

Field Ticket Response Sub Line Item

A collection of elements defining the details of the sub line items of an acknowledgement. It is used if a line item needs to be broken down into further detail.

note		Type	Use	Max	
children	Name				
	SubLineItemNumber	string	M	1	
	The sub-line item number relating to the primary line item referenced in the message.				
	LineStatusCode	string	M	1	
	A code which indicates the whether a line item has been approved, rejected, or is pending.				
	Accept	Pending			
	Reject	Other			
	LineResponseReasonCode	string	M	1	
	A code indicating the response to the line item, such as accepted, rejected, etc.				
	ChangeDescription	string	O	1	
	A free-form textual description of changes made.				
	LineItemInformation			M	1
	A collection of elements detailing identifying information about a line item.				
	FieldTicketQuantity			M	1
	The number of units of an item or service consumed.				
	CommodityCode	string	O	U	
	A code indicating the categorization of a product or service in accordance with a particular standard.				
	PurchaseOrderSubLineItemNumber	string	O	1	
	A sequential individual sub-line identifier within an Order Create document containing product or item information that relates back to a parent line item.				
	PurchaseOrderInformation			O	1
	A collection of elements containing relevant purchase order information which needs to be referenced within other documentation and/or messages.				
	PersonnelInformation			O	U
	A collection of elements detailing relevant personnel information.				
	PartnerInformation			O	U
	A collection of elements detailing partner information.				
	JobLocationInformation			O	1
	A collection of elements giving details of a job location.				
	Pricing			O	1
	A collection of elements detailing price information.				
	AllowanceOrCharge			O	U
A collection of elements defining the details of an allowance or charge to the customer.					
Tax			O	U	
A collection of elements detailing information about tax applied to a transaction.					
ShippingAmount			O	1	
The monetary amount of shipping or freight charges.					
LineItemTotal			O	1	
The net total monetary amount for the line item.					
ServiceDateTime	datetime	O	U		
The actual and/or schedule dates for a service.					
EquipmentIdentifier	string	O	U		
A unique identifier for a piece of equipment such as used for transportation of product.					
EquipmentDescription	string	O	U		
A free-form textual description of carrier equipment.					
CountryOfOrigin			O	1	

	The country where product originates or is deemed to have originated. CountryOfFinalDestination		O	1
	The country where product is ultimately delivered or is deemed to have been delivered. TransportInformation		O	1
	A code indicating the mode of transportation used to move product. PaymentTerms		O	1
	A collection of elements detailing payment terms information. SpecialInstructions	string	O	U
	A free-form textual description of special requirements. PackagingCharacteristicCode	string	O	U
	A code indicating the marking, packaging, loading and related characteristics being described. PackageSpecifications			
	ProductMarking			
	SkidPalletType			
	TypeOfPackage	Other		
	PackagingCharacteristicDescription	string	O	U
	Free-form text providing any additional information associated with the Packaging Characteristic Code. ReferenceInformation		O	U
	A collection of elements detailing references to information that reside outside of the current transaction message. Attachment		O	U
	A collection of elements defining the details of an attachment to the document. Comment	string	O	1
	A free-form textual structure for general information or comments.			
parent(s)	FieldTicketResponseLineItem			

Field Ticket Response Summary

A collection of elements detailing the totals of the acknowledgement.

note		Type	Use	Max
children	Name			
	TotalLineItems	integer	M	1
	The total number of line items contained in a message. AllowanceOrCharge		O	U
	A collection of elements defining the details of an allowance or charge to the customer. ShippingAmount		O	U
	The monetary amount of shipping or freight charges. Tax		O	U
	A collection of elements detailing information about tax applied to a transaction. SubTotalAmount		O	U
	The monetary amount of the subtotal. It is qualified by the subTotalIndicator attribute which identifies what the subtotal is referencing. FieldTicketTotal		O	1
	The total monetary amount of the field ticket. TermsDiscountAmount		O	1
	The total monetary amount of the payment terms discount. DiscountedAmountDue		O	1
	The monetary amount due if paid by terms discount due date (total invoice or installment amount less cash discount.)			
parent(s)	FieldTicketResponse			

Address Information

A collection of elements defining the details of an address.

note				
level	FieldTicketResponseProperties FieldTicketResponseDetails			
children	Name	Type	Use	Max
	POBoxNumber The identity of a physical box within a postal facility to accept and receive mail.	string	O	1
	BuildingHouseNumber The alphanumeric identifier of a building as a part of an address.	string	O	1
	StreetName The name of a street as part of an address.	string	O	1
	AddressLine An occurrence of a generally accepted formatted line of data such that when combined with the entire address structure there is sufficient information for delivery or location purposes.	string	O	U
	CityName The name of the city or municipality.	string	O	1
	StateProvince The name of the municipality or town as a location for mailing, siting and other geographic functions.	string	O	1
	PostalCode The code assigned by local postal authorities to delivery addresses.	string	O	1
	PostalCountry The country code indicating the country to which mail should be delivered.		O	1
	CountyName The name of the county.	string	O	1
	LocationIdentifier A unique identifier for a physical location.			
parent(s)	JobLocationInformation Location PartnerInformation TaxLocation			

Allowance Or Charge

A collection of elements defining the details of an allowance or charge to the customer.

note	<ul style="list-style-type: none"> If AllowanceOrCharge is used, then at least one of AllowanceOrChargeRate, AllowanceOrChargeTotalAmount, or AllowanceOrChargePercent is required. 			
level	FieldTicketResponseDetails FieldTicketResponseSummary			
children	Name	Type	Use	Max
	AllowanceOrChargeTotalAmount The total monetary amount for the allowance or charge.		O	1
	AllowanceOrChargeRate The rate per unit of the allowance or charge.		O	1
	AllowanceOrChargePercent The allowance or charge expressed as a percentage.	decimal	O	1
	AllowanceOrChargeNumber The identifier assigned by a vendor referencing an allowance, promotion, deal or charge.	string	O	1
	AllowanceOrChargeTypeCode A code identifying the kind of allowance or charge being described.	string	O	1
	Freight			
	FuelSurcharge			
	SpecialHandlingService	Discount		
	FlatRate			
	EngineeringCharge			
	InvoiceAdjustment			
	InsuranceSurcharge			
	OneTimeLicenseFee	Royalties		
	MiscellaneousCharge			
	PostageCharge			
	TrailerRentalCharge			
	TransportationDirectBilling			
	TransportationVendorProvided	Other		
	MethodOfHandlingCode A code which describes how a particular allowance or charge should be handled. OffInvoice	string	O	1
	ChargeToBePaidByCustomer			
	Other			
	AllowanceOrChargeDescription A free form description used to clarify the related allowance and charge data elements and their content.	string	O	1
	AllowanceOrChargeQuantity The quantity on which the allowance or charge is based if it is different from the purchase order or invoice quantity.		O	1
parent(s)	FieldTicketResponseLineItem FieldTicketResponseSubLineItem FieldTicketResponseSummary			
attributes	Name	Type	Use	Fixed
	allowanceOrChargeIndicator	string	M	
	A code to indicate whether the information relates to an allowance or charge. Allowance			
	Charge			
	Other			

Allowance Or Charge Percent

The allowance or charge expressed as a percentage.

note				
level	FieldTicketResponseDetails FieldTicketResponseSummary			
parent(s)	AllowanceOrCharge			
attributes	Name	Type	Use	Fixed
	percentIndicator	string	O	
	A code indicating on what basis the allowance or charge percent is calculated.			

Allowance Or Charge Quantity

The quantity on which the allowance or charge is based if it is different from the purchase order or invoice quantity.

note				
level	FieldTicketResponseDetails FieldTicketResponseSummary			
children	Name	Type	Use	Max
	Quantity	decimal	M	1
	A numeric count of measure.			
	UnitOfMeasureCode	string	M	1
	A code identifying the units in which measurement is expressed. Use values from the DE 355 code list contained in ASC X12 release 3030.			
parent(s)	AllowanceOrCharge			

Allowance Or Charge Rate

The rate per unit of the allowance or charge.

note				
level	FieldTicketResponseDetails FieldTicketResponseSummary			
children	Name	Type	Use	Max
	MonetaryAmount	decimal	M	1
	The currency value of a transaction or item.			
	UnitOfMeasureCode	string	M	1
	A code identifying the units in which measurement is expressed. Use values from the DE 355 code list contained in ASC X12 release 3030.			
	CurrencyCode	string	O	1
	A code indicating the currency in which the monetary amount is specified. Use the codelist from ISO 4217:2001 Codes for the representation of currencies and funds.			
parent(s)	AllowanceOrCharge			

Allowance Or Charge Total Amount

The total monetary amount for the allowance or charge.

note				
level	FieldTicketResponseDetails FieldTicketResponseSummary			
children	Name	Type	Use	Max
	MonetaryAmount	decimal	M	1
	The currency value of a transaction or item.			
	CurrencyCode	string	O	1
	A code indicating the currency in which the monetary amount is specified. Use the codelist from ISO 4217:2001 Codes for the representation of currencies and funds.			

parent(s)	AllowanceOrCharge
-----------	-----------------------------------

Alternative Communication Method

Additional methods of communication, such as an IP Address or Printer ID, in addition to those specifically listed elsewhere in contact or address information.

note																																													
level	FieldTicketResponseProperties FieldTicketResponseDetails																																												
parent(s)	ContactInformation																																												
attributes	<table border="1"> <thead> <tr> <th>Name</th> <th>Type</th> <th>Use</th> <th>Fixed</th> </tr> </thead> <tbody> <tr> <td>alternativeCommunicationMethodIndicator</td> <td>string</td> <td>M</td> <td></td> </tr> <tr> <td colspan="4">A code to indicate the type of alternative communication method.</td> </tr> <tr> <td>AUTOVON</td> <td></td> <td></td> <td></td> </tr> <tr> <td>EDIAccessNumber</td> <td></td> <td></td> <td></td> </tr> <tr> <td>FederalTelecommunicationsSystem</td> <td></td> <td></td> <td></td> </tr> <tr> <td>IPAddress</td> <td></td> <td></td> <td></td> </tr> <tr> <td>PacketSwitching</td> <td>PrinterID</td> <td></td> <td></td> </tr> <tr> <td>StationCode</td> <td>Telemail</td> <td></td> <td></td> </tr> <tr> <td>Telex</td> <td>TWX</td> <td></td> <td></td> </tr> <tr> <td>Other</td> <td></td> <td></td> <td></td> </tr> </tbody> </table>	Name	Type	Use	Fixed	alternativeCommunicationMethodIndicator	string	M		A code to indicate the type of alternative communication method.				AUTOVON				EDIAccessNumber				FederalTelecommunicationsSystem				IPAddress				PacketSwitching	PrinterID			StationCode	Telemail			Telex	TWX			Other			
Name	Type	Use	Fixed																																										
alternativeCommunicationMethodIndicator	string	M																																											
A code to indicate the type of alternative communication method.																																													
AUTOVON																																													
EDIAccessNumber																																													
FederalTelecommunicationsSystem																																													
IPAddress																																													
PacketSwitching	PrinterID																																												
StationCode	Telemail																																												
Telex	TWX																																												
Other																																													

Attachment

A collection of elements defining the details of an attachment to the document.

note																																																													
level	FieldTicketResponseProperties FieldTicketResponseDetails																																																												
children	<table border="1"> <thead> <tr> <th>Name</th> <th>Type</th> <th>Use</th> <th>Max</th> </tr> </thead> <tbody> <tr> <td>AttachmentPurposeCode</td> <td>string</td> <td>O</td> <td>1</td> </tr> <tr> <td colspan="4">A code to indicate the purpose of the attachment.</td> </tr> <tr> <td>Template</td> <td></td> <td></td> <td></td> </tr> <tr> <td>Other</td> <td></td> <td></td> <td></td> </tr> <tr> <td>FileName</td> <td>string</td> <td>O</td> <td>1</td> </tr> <tr> <td colspan="4">The name of the file in an attachment.</td> </tr> <tr> <td>AttachmentTitle</td> <td>string</td> <td>O</td> <td>1</td> </tr> <tr> <td colspan="4">The title of the attachment.</td> </tr> <tr> <td>AttachmentDescription</td> <td>string</td> <td>O</td> <td>1</td> </tr> <tr> <td colspan="4">A free-form textual description of the attachment.</td> </tr> <tr> <td>FileType</td> <td>string</td> <td>O</td> <td>1</td> </tr> <tr> <td colspan="4">The type of the file in an attachment.</td> </tr> <tr> <td>AttachmentLocation</td> <td>string</td> <td>O</td> <td>1</td> </tr> <tr> <td colspan="4">The location of the attachment, such as a URL.</td> </tr> </tbody> </table>	Name	Type	Use	Max	AttachmentPurposeCode	string	O	1	A code to indicate the purpose of the attachment.				Template				Other				FileName	string	O	1	The name of the file in an attachment.				AttachmentTitle	string	O	1	The title of the attachment.				AttachmentDescription	string	O	1	A free-form textual description of the attachment.				FileType	string	O	1	The type of the file in an attachment.				AttachmentLocation	string	O	1	The location of the attachment, such as a URL.			
Name	Type	Use	Max																																																										
AttachmentPurposeCode	string	O	1																																																										
A code to indicate the purpose of the attachment.																																																													
Template																																																													
Other																																																													
FileName	string	O	1																																																										
The name of the file in an attachment.																																																													
AttachmentTitle	string	O	1																																																										
The title of the attachment.																																																													
AttachmentDescription	string	O	1																																																										
A free-form textual description of the attachment.																																																													
FileType	string	O	1																																																										
The type of the file in an attachment.																																																													
AttachmentLocation	string	O	1																																																										
The location of the attachment, such as a URL.																																																													
parent(s)	FieldTicketResponseLineItem FieldTicketResponseProperties FieldTicketResponseSubLineItem																																																												

Block

A collection of elements defining the details of a block, which identifies a location.

note				
level	FieldTicketResponseProperties FieldTicketResponseDetails			
children	Name	Type	Use	Max
	BlockName	string	O	1
	The name of the block, which identifies a location.			
	OCSGNumber	string	O	1
	The Outer Continental Shelf Gulf number.			
	StateLease	string	O	1
	Lease on state land.			
parent(s)	GeographicalInformation			

Commodity Code

A code indicating the categorization of a product or service in accordance with a particular standard.

note				
level	FieldTicketResponseDetails			
parent(s)	FieldTicketResponseLineItem FieldTicketResponseSubLineItem			
attributes	Name	Type	Use	Fixed
	agencyIndicator	string	O	
	A code indicating what agency or organization is responsible for defining the commodity code list.			

Contact Identifier

The identifier of the contact person or department.

note				
level	FieldTicketResponseProperties FieldTicketResponseDetails			
parent(s)	ContactInformation			
attributes	Name	Type	Use	Fixed
	contactIdentifierIndicator	string	O	
	A code to identify the origin of the contact identifier.			
	AssignedByBuyer			
	AssignedBySeller			
	EmployeeID	Other		

Contact Information

A collection of elements defining details of communication for a contact person.

note	• It is recommended that ContactInformation be used at either the Property or Detail level, but not both.			
level	FieldTicketResponseProperties FieldTicketResponseDetails			
children	Name	Type	Use	Max
	ContactIdentifier	string	O	1
	The identifier of the contact person or department.			
	ContactName	string	O	1
	The name of the contact person within the organization.			
	ContactDescription	string	O	1
	A free-form textual description of the contact.			
	Telephone		O	U
	A collection of elements detailing information about a telephone number.			
	EmailAddress	string	O	1
	The address assigned to a person or organization to receive electronic messages. AlternativeCommunicationMethod			
		string	O	U
	Additional methods of communication, such as an IP Address or Printer ID, in addition to those specifically listed elsewhere in contact or address information.			
parent(s)	PartnerInformation			
attributes	Name	Type	Use	Fixed
	contactInformationIndicator	string	M	
	A code indicating the function of the contact.			
	BuyerDepartment			
	DeliveryContact			
	DesignEngineer	Engineer		
	EnteredBy			
	FieldRepresentative			
	OfficeRepresentative			
	OrderContact			
	PurchasingAgent			
	QuotePreparer			
	QuoteRequestor			
	RFQContact			
	SalesRepresentative			
	ServiceCoordinator			
	TechnicalMarketingRepresentative			
	Other			

Country Of Final Destination

The country where product is ultimately delivered or is deemed to have been delivered.

note				
level	FieldTicketResponseProperties FieldTicketResponseDetails			
children	Name	Type	Use	Max
	CountryCode	string	M	1
	A code indicating a country.			
	Use the codelist from ISO 3166-1:1997 Codes for the representation of names of countries and their subdivisions – Part 1: Country Codes.			
parent(s)	FieldTicketResponseLineItem FieldTicketResponseProperties FieldTicketResponseSubLineItem			

Country Of Origin

The country where product originates or is deemed to have originated.

note				
level	FieldTicketResponseProperties FieldTicketResponseDetails			
children	Name CountryCode A code indicating a country. Use the codelist from ISO 3166-1:1997 Codes for the representation of names of countries and their subdivisions – Part 1: Country Codes.	Type string	Use M	Max 1
parent(s)	FieldTicketResponseLineItem FieldTicketResponseProperties FieldTicketResponseSubLineItem			

Deferred

The terms for a deferred payment in relation to a transaction.

note				
level	FieldTicketResponseProperties FieldTicketResponseDetails			
children	Name DeferredAmount The monetary amount that is deferred for payment based upon terms in an invoice, contract or agreement. DeferredDueDate The date upon which a deferred payment is due. Format is CCYY-MM-DD where "CC" represents the century, "YY" the year, "MM" the month and "DD" the day. PercentDeferredPayable The amount due that is deferred for payment expressed as a percentage. Description A free-form textual explanation or clarification.	Type date decimal string	Use O O O	Max 1 1 1 1
parent(s)	PaymentTerms			

Deferred Amount

The monetary amount that is deferred for payment based upon terms in an invoice, contract or agreement.

note				
level	FieldTicketResponseProperties FieldTicketResponseDetails			
children	Name MonetaryAmount The currency value of a transaction or item. CurrencyCode A code indicating the currency in which the monetary amount is specified. Use the codelist from ISO 4217:2001 Codes for the representation of currencies and funds.	Type decimal string	Use M O	Max 1 1
parent(s)	Deferred			

Discount Amount

The monetary amount of a discount based upon payment terms.

note				
level	FieldTicketResponseProperties FieldTicketResponseDetails			
children	Name	Type	Use	Max
	MonetaryAmount	decimal	M	1
	The currency value of a transaction or item.			
	CurrencyCode	string	O	1
	A code indicating the currency in which the monetary amount is specified. Use the codelist from ISO 4217:2001 Codes for the representation of currencies and funds.			
parent(s)	Discounts			

Discounted Amount Due

The monetary amount due if paid by terms discount due date (total invoice or installment amount less cash discount.)

note				
level	FieldTicketResponseSummary			
children	Name	Type	Use	Max
	MonetaryAmount	decimal	M	1
	The currency value of a transaction or item.			
	CurrencyCode	string	O	1
	A code indicating the currency in which the monetary amount is specified. Use the codelist from ISO 4217:2001 Codes for the representation of currencies and funds.			
parent(s)	FieldTicketResponseSummary			

Discounts

The monetary amount allowed or applied as a credit against a transaction or balance.

note				
level	FieldTicketResponseProperties FieldTicketResponseDetails			
children	Name	Type	Use	Max
	DaysDue	integer	O	1
	The number of days from the payment terms basis date before a discount expires.			
	DiscountsDueDate	date	O	1
	The date upon which a discount expires.			
	Format is CCYY-MM-DD where "CC" represents the century, "YY" the year, "MM" the month and "DD" the day.			
	PercentDiscount	decimal	O	1
	A discount to be applied to the transaction expressed as a percentage.			
DiscountAmount		O	1	
The monetary amount of a discount based upon payment terms.				
Description	string	O	1	
A free-form textual explanation or clarification.				
parent(s)	PaymentTerms			

Effective Dates

The period of time (or range) where the information is valid or guaranteed.

note				
level	FieldTicketResponseProperties FieldTicketResponseDetails			
children	Name	Type	Use	Max
	FromDate	date	M	1
	The date upon which a time period begins. Format is CCYY-MM-DD where "CC" represents the century, "YY" the year, "MM" the month and "DD" the day.			
children	ToDate	date	M	1
	The date upon which a time period ends. Format is CCYY-MM-DD where "CC" represents the century, "YY" the year, "MM" the month and "DD" the day.			
parent(s)	TaxInformation			

Field Ticket Information

A collection of elements containing relevant field ticket information which needs to be referenced within other documentation and/or messages.

note				
level	FieldTicketResponseProperties			
children	Name	Type	Use	Max
	FieldTicketNumber	string	M	1
	A unique identifier for a Field Ticket.			
children	FieldTicketDate	date	O	1
	The date upon which a field ticket was created or deemed to have been issued. Format is CCYY-MM-DD where "CC" represents the century, "YY" the year, "MM" the month and "DD" the day.			
	RevisionNumber	string	O	1
A number indicating the version of the document. It is used if a message is resent in its entirety to replace an earlier version.				
parent(s)	FieldTicketResponseProperties			

Field Ticket Quantity

The number of units of an item or service consumed.

note				
level	FieldTicketResponseDetails			
children	Name	Type	Use	Max
	Quantity	decimal	M	1
	A numeric count of measure.			
children	UnitOfMeasureCode	string	M	1
	A code identifying the units in which measurement is expressed. Use values from the DE 355 code list contained in ASC X12 release 3030.			
parent(s)	FieldTicketResponseLineItem FieldTicketResponseSubLineItem			

Field Ticket Total

The total monetary amount of the field ticket.

note				
level	FieldTicketResponseSummary			
children	Name	Type	Use	Max
	MonetaryAmount The currency value of a transaction or item.	decimal	M	1
children	CurrencyCode	Type	Use	Max
	A code indicating the currency in which the monetary amount is specified. Use the codelist from ISO 4217:2001 Codes for the representation of currencies and funds.	string	O	1
parent(s)	FieldTicketResponseSummary			

Geographical Information

A collection of elements defining a geographical location.

note	• If any one of Section, Township, or Range is given then the other two are required.			
level	FieldTicketResponseProperties FieldTicketResponseDetails			
children	Name	Type	Use	Max
	FieldName The name of the oil field.	string	O	1
	Section A part of Section/Township/Range location identifier scheme.	string	O	1
	Township A part of Section/Township/Range location identifier scheme.	string	O	1
	Range A part of Section/Township/Range location identifier scheme.	string	O	1
	Region The name of a geographic region.	string	O	1
	Block A collection of elements defining the details of a block, which identifies a location.		O	1
children	GPSCoordinates A collection of elements containing latitude and longitude data for a specific location.		O	1
parent(s)	JobLocationInformation Location			

GPS Coordinates

A collection of elements containing latitude and longitude data for a specific location.

note				
level	FieldTicketResponseProperties FieldTicketResponseDetails			
children	Name	Type	Use	Max
	Latitude The specified latitude of a location.	string	M	1
children	Longitude The specified longitude of a location.	string	M	1
parent(s)	GeographicalInformation			

Hazardous Material Class Code

A code indicating the kind of hazard for a material.

note				
level	FieldTicketResponseProperties FieldTicketResponseDetails			
parent(s)	HazardousMaterials			
attributes	Name	Type	Use	Fixed
	hazardousMaterialIndicator	string	M	
	A code which qualifies the Hazardous Material Class Code.			

Hazardous Materials

A collection of elements conveying hazardous goods information related to a product.

note	• If HazardousMaterials is used, then at least one of SpecialHandlingCode or HazardousMaterialDescription is required.			
level	FieldTicketResponseProperties FieldTicketResponseDetails			
children	Name	Type	Use	Max
	SpecialHandlingCode	string	O	1
	A code identifying any special transportation handling instructions			
	HazardousMaterialDescription	string	O	1
	A free-form textual explanation of information related to a hazardous shipment.			
	HazardousMaterialClassCode	string	O	U
	A code indicating the kind of hazard for a material.			
parent(s)	TransportInformation			

Job Location Identifier

A unique identifier referencing the job location.

note				
level	FieldTicketResponseProperties FieldTicketResponseDetails			
parent(s)	JobLocationInformation			
attributes	Name	Type	Use	Fixed
	jobLocationIdentifierIndicator	string	O	
	A code to define what type of location the identifier is referencing.			
	ChemicalPlant	Coal-		
	Degas			
	CogenerationPlant			
	Construction	Dock		
	GasPlant			
	IndustrialServiceMiscellaneous			
	MilitaryGovernment			
	PaperMill			
	PetroleumPlant	Pipeline		
	Refinery	Rig		
	UtilityPlant	Other		

Job Location Information

A collection of elements giving details of a job location.

note				
level	FieldTicketResponseProperties FieldTicketResponseDetails			
children	<p>Name JobLocationIdentifier A unique identifier referencing the job location.</p> <p>JobLocationClassCode string A code indicating the class of the job location. FederalWaters Land InlandWaters StateWaters Other JobLocationDescription string A free-form textual description of the job location. JobLocationStatus string A code indicating whether a location is active or inactive. Inactive Active Other WellInformation A collection of elements detailing information about a well. JobSiteCategory string A code indicating the kind of site on which the job is located. Boiler CivilHighways Compression Condenser ConstructPiles Dams HeatExchanger IndustrialServiceMiscellaneous Piping Production TowerVessel Turbine UndergroundStr Other AddressInformation A collection of elements defining the details of an address. GeographicalInformation A collection of elements defining a geographical location.</p>	Type string	Use O	Max U
parent(s)	FieldTicketResponseLineItem FieldTicketResponseProperties FieldTicketResponseSubLineItem			

Line Item Identifier

The unique identifier for a product or service making up the line item.

note				
level	FieldTicketResponseDetails			
parent(s)	LineItemInformation			
attributes	Name	Type	Use	Fixed
	identifierIndicator	string	M	
	A code to indicate the origin of the identifier.			
	AssignedByBuyer			
	AssignedByManufacturer			
	AssignedBySeller			
	CatalogueNumber			
	UPCNumber	Other		

Line Item Information

A collection of elements detailing identifying information about a line item.

note				
level	FieldTicketResponseDetails			
children	Name	Type	Use	Max
	LineItemIdentifier	string	O	U
	The unique identifier for a product or service making up the line item.			
	LineItemName	string	O	1
	The name of the product or service in the line item.			
	LineItemDescription	string	O	1
	A free-form textual description of the line item.			
	ManufacturerIdentifier	string	O	1
	A unique identifier for a manufacturer.			
parent(s)	FieldTicketResponseLineItem FieldTicketResponseSubLineItem			

Line Item Total

The net total monetary amount for the line item.

note				
level	FieldTicketResponseDetails			
children	Name	Type	Use	Max
	MonetaryAmount	decimal	M	1
	The currency value of a transaction or item.			
	CurrencyCode	string	O	1
	A code indicating the currency in which the monetary amount is specified.			
	Use the codelist from ISO 4217:2001 Codes for the representation of currencies and funds.			
parent(s)	FieldTicketResponseLineItem FieldTicketResponseSubLineItem			

Location

A collection of elements giving details about a location.

note				
level	FieldTicketResponseProperties FieldTicketResponseDetails			
children	Name	Type	Use	Max
	LocationIdentifier	string	O	1
	A unique identifier for a physical location.			
	LocationName	string	O	1
	The name of the location being referenced.			
	AddressInformation		O	1
GeographicalInformation		O	1	
A collection of elements defining the details of an address.				
A collection of elements defining a geographical location.				
LocationDescription	string	O	1	
Free-form textual description of the location.				
parent(s)	TransportInformation			
attributes	Name	Type	Use	Fixed
	locationIndicator	string	O	
	A code to identify what kind of location is being referenced.			
	FreightEqualizationPoint			
	OnVessel-FOBPoint			
	AssignedBySeller	Origin-		
	AfterLoadingOnEquipment	Origin-		
	ShippingPoint	Plant		
	ShippingDestination			
	Warehouse	Other		

Measurement Range

A collection of elements providing a minimum and maximum measurement to create a range.

note				
level	FieldTicketResponseProperties FieldTicketResponseDetails			
children	Name	Type	Use	Max
	MinimumMeasurement	decimal	M	1
	The smallest measurement in a given range.			
MaximumMeasurement	decimal	M	1	
The largest measurement in a given range.				
parent(s)	PriceBasis			

Partner Identifier

A unique identifier indicating a particular partner or organization.

note				
level	FieldTicketResponseProperties FieldTicketResponseDetails			
parent(s)	PartnerInformation			
attributes	Name	Type	Use	Fixed
	partnerIdentifierIndicator	string	M	
	A code to identify the origin of the Partner Identifier.			
	AssignedByBuyer			
	AssignedBySeller			
	DUNSNumber			
	DUNS+4Number	Other		

Partner Information

A collection of elements detailing partner information.

note				
level	FieldTicketResponseProperties FieldTicketResponseDetails			
children	Name	Type	Use	Max
	PartnerIdentifier	string	M	U
	A unique identifier indicating a particular partner or organization.			
	PartnerName	string	O	1
	The name of the organization being referenced in Partner Information.			
	AddressInformation	string	O	1
	A collection of elements defining the details of an address.			
ContactInformation	string	O	U	
A collection of elements defining details of communication for a contact person.				
TaxInformation	string	O	1	
A collection of elements detailing tax information about a partner.				
URL	string	O	1	
A Uniform Resource Locator indicating an internet address.				
parent(s)	FieldTicketResponseLineItem FieldTicketResponseProperties FieldTicketResponseSubLineItem TransportInformation			
attributes	Name	Type	Use	Fixed
	partnerRoleIndicator	string	M	
	A code to indicate the role in this transaction of the partner being referenced. BillAndShipTo			
	BillTo			
	Carrier			
	CommissionPayee			
	FinalRecipient			
	Manufacturer			
	Marketplace			
	MaterialIssuer			
	OnsiteContractingCompany			
	OperatingCompany			
	Payer			
	PrimaryContractor			
	RemitTo			
	Seller			
	ShipFromParty			
	ShipToParty			
	SoldTo			
	ThirdParty			
	Vendor			
	Warehouse			
	Other			

	FieldTicketResponseSubLineItem
--	--

Postal Country

The country code indicating the country to which mail should be delivered.

note				
level	FieldTicketResponseProperties FieldTicketResponseDetails			
children	Name CountryCode A code indicating a country. Use the codelist from ISO 3166-1:1997 Codes for the representation of names of countries and their subdivisions – Part 1: Country Codes.	Type string	Use M	Max 1
parent(s)	AddressInformation			

Price Basis

A structure allowing for a price to be based on more than just a single unit of measure.

note				
level	FieldTicketResponseDetails			
children	Name Measurement A numeric value for technical or attribute data. MeasurementRange A collection of elements providing a minimum and maximum measurement to create a range. UnitOfMeasureCode A code identifying the units in which measurement is expressed. Use values from the DE 355 code list contained in ASC X12 release 3030. BasisDescription Free-form textual description of the basis.	Type decimal string	Use O M	Max 1 1 1
parent(s)	Pricing			

Pricing

A collection of elements detailing price information.

note				
level	FieldTicketResponseDetails			
children	Name UnitPrice The unit price of the product or service being sold. PriceBasis A structure allowing for a price to be based on more than just a single unit of measure.	Type	Use M O	Max 1 U
parent(s)	FieldTicketResponseLineItem FieldTicketResponseSubLineItem			

Primary Currency

The currency code indicating the currency to be used for the transaction.

note				
level	FieldTicketResponseProperties			
children	Name CurrencyCode A code indicating the currency in which the monetary amount is specified. Use the codelist from ISO 4217:2001 Codes for the representation of currencies	Type string	Use M	Max 1

	and funds.
parent(s)	FieldTicketResponseProperties

Purchase Order Information

A collection of elements containing relevant purchase order information which needs to be referenced within other documentation and/or messages.

note																																																																													
level	FieldTicketResponseProperties FieldTicketResponseDetails																																																																												
children	<table border="1"> <thead> <tr> <th>Name</th> <th>Type</th> <th>Use</th> <th>Max</th> </tr> </thead> <tbody> <tr> <td>PurchaseOrderNumber</td> <td>string</td> <td>M</td> <td>1</td> </tr> <tr> <td>A unique identifier for an Order Create message.</td> <td></td> <td></td> <td></td> </tr> <tr> <td>PurchaseOrderIssuedDate</td> <td>date</td> <td>O</td> <td>1</td> </tr> <tr> <td>The date upon which an order was created or deemed to have been issued. Format is CCYY-MM-DD where "CC" represents the century, "YY" the year, "MM" the month and "DD" the day.</td> <td></td> <td></td> <td></td> </tr> <tr> <td>PurchaseOrderTypeCode</td> <td>string</td> <td>O</td> <td>1</td> </tr> <tr> <td>A code indicating the kind of purchase order.</td> <td></td> <td></td> <td></td> </tr> <tr> <td>Confirmation</td> <td></td> <td></td> <td></td> </tr> <tr> <td>EmergencyOrder</td> <td></td> <td></td> <td></td> </tr> <tr> <td>ReleaseOrDeliveryOrder</td> <td></td> <td></td> <td></td> </tr> <tr> <td>RushOrder</td> <td></td> <td></td> <td></td> </tr> <tr> <td>StandAloneOrder</td> <td></td> <td></td> <td></td> </tr> <tr> <td>SupplyOrServiceOrder</td> <td>Other</td> <td></td> <td></td> </tr> <tr> <td>ReleaseNumber</td> <td>string</td> <td>O</td> <td>1</td> </tr> <tr> <td>A number identifying a release against a purchase order previously placed by the parties involved in the transaction. It is the equivalent to a work order number.</td> <td></td> <td></td> <td></td> </tr> <tr> <td>SalesOrderNumber</td> <td>string</td> <td>O</td> <td>1</td> </tr> <tr> <td>The identifier assigned by a supplier to an order placed by a customer.</td> <td></td> <td></td> <td></td> </tr> <tr> <td>RevisionNumber</td> <td>string</td> <td>O</td> <td>1</td> </tr> <tr> <td>A number indicating the version of the document. It is used if a message is resent in its entirety to replace an earlier version.</td> <td></td> <td></td> <td></td> </tr> </tbody> </table>	Name	Type	Use	Max	PurchaseOrderNumber	string	M	1	A unique identifier for an Order Create message.				PurchaseOrderIssuedDate	date	O	1	The date upon which an order was created or deemed to have been issued. Format is CCYY-MM-DD where "CC" represents the century, "YY" the year, "MM" the month and "DD" the day.				PurchaseOrderTypeCode	string	O	1	A code indicating the kind of purchase order.				Confirmation				EmergencyOrder				ReleaseOrDeliveryOrder				RushOrder				StandAloneOrder				SupplyOrServiceOrder	Other			ReleaseNumber	string	O	1	A number identifying a release against a purchase order previously placed by the parties involved in the transaction. It is the equivalent to a work order number.				SalesOrderNumber	string	O	1	The identifier assigned by a supplier to an order placed by a customer.				RevisionNumber	string	O	1	A number indicating the version of the document. It is used if a message is resent in its entirety to replace an earlier version.			
Name	Type	Use	Max																																																																										
PurchaseOrderNumber	string	M	1																																																																										
A unique identifier for an Order Create message.																																																																													
PurchaseOrderIssuedDate	date	O	1																																																																										
The date upon which an order was created or deemed to have been issued. Format is CCYY-MM-DD where "CC" represents the century, "YY" the year, "MM" the month and "DD" the day.																																																																													
PurchaseOrderTypeCode	string	O	1																																																																										
A code indicating the kind of purchase order.																																																																													
Confirmation																																																																													
EmergencyOrder																																																																													
ReleaseOrDeliveryOrder																																																																													
RushOrder																																																																													
StandAloneOrder																																																																													
SupplyOrServiceOrder	Other																																																																												
ReleaseNumber	string	O	1																																																																										
A number identifying a release against a purchase order previously placed by the parties involved in the transaction. It is the equivalent to a work order number.																																																																													
SalesOrderNumber	string	O	1																																																																										
The identifier assigned by a supplier to an order placed by a customer.																																																																													
RevisionNumber	string	O	1																																																																										
A number indicating the version of the document. It is used if a message is resent in its entirety to replace an earlier version.																																																																													
parent(s)	FieldTicketResponseLineItem FieldTicketResponseProperties FieldTicketResponseSubLineItem																																																																												

Reference Information

A collection of elements detailing references to information that resides outside of the current transaction message.

note	• It is recommended that ReferenceInformation be used at either the Property or Detail level, but not both.			
level	FieldTicketResponseProperties FieldTicketResponseDetails			
children	Name	Type	Use	Max
	ReferenceNumber A number or identifier that is used to reference documents or information not included within a particular message. The referenceInformationIndicator attribute qualifies what this number references Description A free-form textual explanation or clarification.	string	M	1
parent(s)	FieldTicketResponseLineItem FieldTicketResponseProperties FieldTicketResponseSubLineItem			
attributes	Name	Type	Use	Fixed
	referenceInformationIndicator A code to identify what type of information is being referenced.	string	M	
	AFENumber			
	BatchNumber			
	BillOfLading			
	Certification			
	CertifiedInspectionTestResults			
	ConfigurationNumber			
	ContractNumber			
	CostAllocationReference			
	CostCenter			
	CustomerAccountingReference			
	CustomerReferenceNumber			
	DeliveryTicketNumber			
	DivisionIdentifier			
	EngineeringChangeOrderNumber			
	JobNumber			
	LetterOfCreditNumber			
	LocationNumber			
	MaterialSafetyDataSheet			
	OperatorGeneralLedgerCode			
	OriginalInvoiceNumber			
	PriceAreaNumber			
	ProjectNumber			
	ProposalNumber			
	QuoteNumber			
	RequestForQuotationNumber			
	TemplateName	Other		

Second Currency

The currency code indicating a second currency, such as for European countries using the Euro and a local currency.

note				
level	FieldTicketResponseProperties			
children	Name	Type	Use	Max
	CurrencyCode	string	M	1
	A code indicating the currency in which the monetary amount is specified.			
	Use the codelist from ISO 4217:2001 Codes for the representation of currencies and funds.			
parent(s)	FieldTicketResponseProperties			

Service Date Time

The actual and/or schedule dates for a service.

note	<p>Format is CCYY-MM-DDThh:mm:ss where "CC" represents the century, "YY" the year, "MM" the month and "DD" the day. The letter "T" is the date/time separator and "hh", "mm", "ss" represent hour, minute and second respectively.</p> <p>The CCYY field must have at least four digits, the MM, DD, SS, hh, mm and ss fields exactly two digits each. Leading zeroes must be used if the field would otherwise have too few digits.</p> <p>If no time is to be given then use zeroes in the hh, mm and ss fields.</p> <p>This representation may be immediately followed by a "Z" to indicate Coordinated Universal Time (UTC) or, to indicate the time zone, i.e. the difference between the local time and Coordinated Universal Time, immediately followed by a sign, + or -, followed by the difference from UTC represented as hh:mm (note: the minutes part is required). For example, to indicate 1:20 pm on May the 31st, 1999 for Eastern Standard Time which is 5 hours behind Coordinated Universal Time (UTC), one would write: 1999-05-31T13:20:00-05:00.</p>			
level	FieldTicketResponseProperties FieldTicketResponseDetails			
parent(s)	FieldTicketResponseLineItem FieldTicketResponseProperties FieldTicketResponseSubLineItem			
attributes	Name	Type	Use	Fixed
	dateTypeIndicator	string	M	
	A code to identify which date being given.			
	ArriveLocationDate			
	InvoiceDueDate			
	InvoicePeriodStartDate			
	LeaveLocationDate			
	PromisedForDelivery			
	PromisedForShipment			
	RequestedForDelivery			
	RequestedForShipment			
	ServicePeriodEnd			
	ServicePeriodStart	ShipDate		
	Other			

Shipping Amount

The monetary amount of shipping or freight charges.

note				
level	FieldTicketResponseDetails FieldTicketResponseSummary			
children	Name	Type	Use	Max
	Monetary Amount The currency value of a transaction or item.	decimal	M	1
	CurrencyCode A code indicating the currency in which the monetary amount is specified. Use the codelist from ISO 4217:2001 Codes for the representation of currencies and funds.	string	O	1
	parent(s)	FieldTicketResponseLineItem FieldTicketResponseSubLineItem FieldTicketResponseSummary		

Special Instructions

A free-form textual description of special requirements.

note				
level	FieldTicketResponseProperties FieldTicketResponseDetails			
parent(s)	FieldTicketResponseLineItem FieldTicketResponseProperties FieldTicketResponseSubLineItem			
attributes	Name	Type	Use	Fixed
	instructionIndicator A code to identify the type of instruction being given.	string	O	
	CarrierInstructions			
	ConsigneeInstructions			
	DriverInstructions			
	EmptyReturnInstructions			
	InspectionInstructions			
	RoutingInstructions			
	ShipperInstructions			
	ShortLeadTime			
	Tolerances			
	Other			

Sub Total Amount

The monetary amount of the subtotal. It is qualified by the subtotal Indicator attribute which identifies what the subtotal is referencing.

note				
level	FieldTicketResponseSummary			
children	Name	Type	Use	Max
	Monetary Amount The currency value of a transaction or item.	decimal	M	1
	CurrencyCode A code indicating the currency in which the monetary amount is specified. Use the codelist from ISO 4217:2001 Codes for the representation of currencies and funds.	string	O	1
parent(s)	FieldTicketResponseSummary			
attributes	Name	Type	Use	Fixed
	subTotalIndicator A code to indicate the type of subtotal being given.	string	M	
	Equipment	Labor		
	Materials	Other		

Tax Amount

The monetary amount of the tax.

note				
level	FieldTicketResponseDetails FieldTicketResponseSummary			
children	Name	Type	Use	Max
	MonetaryAmount	decimal	M	1
	The currency value of a transaction or item.			
	CurrencyCode	string	O	1
	A code indicating the currency in which the monetary amount is specified. Use the codelist from ISO 4217:2001 Codes for the representation of currencies and funds.			
parent(s)	Tax			

Tax Basis Amount

The monetary amount which is subject to tax.

note				
level	FieldTicketResponseDetails FieldTicketResponseSummary			
children	Name	Type	Use	Max
	MonetaryAmount	decimal	M	1
	The currency value of a transaction or item.			
	CurrencyCode	string	O	1
	A code indicating the currency in which the monetary amount is specified. Use the codelist from ISO 4217:2001 Codes for the representation of currencies and funds.			
parent(s)	Tax			

Tax Information

A collection of elements detailing tax information about a partner.

note				
level	FieldTicketResponseProperties FieldTicketResponseDetails			
children	Name	Type	Use	Max
	TaxIdentifierNumber	string	O	1
	A unique number or code issued to an organization by a governmental or regulatory body identifying that entity for tax purposes.			
	Jurisdiction	string	O	1
	The authority exercised by a nation, a judicial body, or a legislative body over persons, places, and property. Jurisdiction may apply to the territory over which a nation has control, including the land area, the adjacent sea, and the airspace above. It may also refer to the authority of an international body to make decisions binding on national entities.			
	TaxCertificateType	string	O	1
The category of tax certificate for which an identifying number is issued.				
TaxCertificateNumber	string	O	1	
The identifying number for a tax certificate such as tax exemption, sales and use tax certificate or other such document.				
parent(s)	PartnerInformation			

Tax Location

The physical or deemed location at which tax is calculated based upon jurisdiction by a governmental or regulatory body.

note	
------	--

level	FieldTicketResponseDetails FieldTicketResponseSummary			
children	Name	Type	Use	Max
	LocationIdentifier A unique identifier for a physical location.	string	O	1
	LocationName The name of the location being referenced.	string	O	1
	LocationDescription Free-form textual description of the location.	string	O	1
	AddressInformation A collection of elements defining the details of an address.		O	1
parent(s)	Tax			

Telephone

A collection of elements detailing information about a telephone number.

note				
level	FieldTicketResponseProperties FieldTicketResponseDetails			
children	Name	Type	Use	Max
	PhoneNumber A numerical sequence to reach a telephone attached to a communication network.	string	M	1
	PhoneNumberExtension An extension number that is needed to further identify the phone number.	string	O	1
	TelecomCountryCode The dialing code from another country to access the telephone network in another country.	string	O	1
	TelecomAreaCode The area code within a country or jurisdiction, if needed, to access local telephones within the country.	string	O	1
parent(s)	ContactInformation			
attributes	Name	Type	Use	Fixed
	telephoneIndicator A code to indicate the type of phone number being given.	string	O	
	Fax	Mobile		
	Pager	Voice		
	Other			

Terms Discount Amount

The total monetary amount of the payment terms discount.

note				
level	FieldTicketResponseSummary			
children	Name	Type	Use	Max
	MonetaryAmount The currency value of a transaction or item.	decimal	M	1
	CurrencyCode A code indicating the currency in which the monetary amount is specified. Use the codelist from ISO 4217:2001 Codes for the representation of currencies and funds.	string	O	1
parent(s)	FieldTicketResponseSummary			

Time Worked

The time period worked by a specific employee completing a service.

note				
level	FieldTicketResponseDetails			
children	Name	Type	Use	Max
	Quantity	decimal	M	1
	A numeric count of measure.			
children	UnitOfMeasureCode	string	M	1
	A code identifying the units in which measurement is expressed. Use values from the DE 355 code list contained in ASC X12 release 3030.			
parent(s)	PersonnelInformation			

Transport Information

A collection of elements detailing how product is transported.

note	• If TransportInformation is used, then at least one of TransportMethodCode, Routing, or ServiceLevelCode is required.			
level	FieldTicketResponseProperties FieldTicketResponseDetails			
children	Name	Type	Use	Max
	ShipmentMethodOfPayment	string	M	1
	A code indicating payment terms for transportation charges.			
	Collect	Collect-		
	FreightCreditedBackToCustomer			
	CustomerPickupBackhaul	Pickup		
	PrepaidBySeller	Prepaid-		
	ChargedToCustomer	ServiceFreight-		
	NoCharge	ThirdPartyPay		
	Other			
	RoutingSequenceCode	string	O	1
	A code indicating the relationship of a carrier to a specific shipment movement.			
	OriginCarrier-AirMotorOcean			
	OriginDeliveryCarrier-AnyMode			
	Other			
	TransportMethodCode	string	O	1
	A code indicating the mode of transportation used to move product.			
	Air			
	AirExpress	Barge		
	BestWay-ShippersOption	Boat		
	CustomerPickup			
	ExpeditedTruck	Motor-		
	CommonCarrier	Ocean		
	ParcelPost	Rail		
	SupplierTruck	Truck		
	Vessel	Other		
	PartnerInformation		O	U
	A collection of elements detailing partner information.			
	Location		O	U
	A collection of elements giving details about a location.			
	ShipmentTermsCode	string	O	1
	A code indicating the terms under which a product is shipped, such as Freight Prepaid, FOB or similar.			
	Routing	string	O	1
	A free-form description of the shipping route to be provided for transportation of product.			
	ServiceLevelCode	string	O	1
	A code indicating the level of service required.			
	HazardousMaterials		O	1
	A collection of elements conveying hazardous goods information related to a product.			
	CarrierEquipmentCode	string	O	1
	A code indicating the kind of equipment parent(s) the carrier.			
	TransportName	string	O	1

	The identifier of specific vessel, truck, railcar, etc.
parent(s)	FieldTicketResponseLineItem FieldTicketResponseProperties FieldTicketResponseSubLineItem

Unit Price

A collection of elements detailing how product is transported.

note																	
level	FieldTicketResponseDetails																
children	<table border="1"> <thead> <tr> <th>Name</th> <th>Type</th> <th>Use</th> <th>Max</th> </tr> </thead> <tbody> <tr> <td>MonetaryAmount The currency value of a transaction or item.</td> <td>decimal</td> <td>M</td> <td>1</td> </tr> <tr> <td>UnitOfMeasureCode A code identifying the units in which measurement is expressed. Use values from the DE 355 code list contained in ASC X12 release 3030.</td> <td>string</td> <td>M</td> <td>1</td> </tr> <tr> <td>CurrencyCode A code indicating the currency in which the monetary amount is specified. Use the codelist from ISO 4217:2001 Codes for the representation of currencies and funds.</td> <td>string</td> <td>O</td> <td>1</td> </tr> </tbody> </table>	Name	Type	Use	Max	MonetaryAmount The currency value of a transaction or item.	decimal	M	1	UnitOfMeasureCode A code identifying the units in which measurement is expressed. Use values from the DE 355 code list contained in ASC X12 release 3030.	string	M	1	CurrencyCode A code indicating the currency in which the monetary amount is specified. Use the codelist from ISO 4217:2001 Codes for the representation of currencies and funds.	string	O	1
Name	Type	Use	Max														
MonetaryAmount The currency value of a transaction or item.	decimal	M	1														
UnitOfMeasureCode A code identifying the units in which measurement is expressed. Use values from the DE 355 code list contained in ASC X12 release 3030.	string	M	1														
CurrencyCode A code indicating the currency in which the monetary amount is specified. Use the codelist from ISO 4217:2001 Codes for the representation of currencies and funds.	string	O	1														
parent(s)	Pricing																

Well Identifier

A unique identifier referencing a well, such as an PIDX or UWI number.

note																					
level	FieldTicketResponseProperties FieldTicketResponseDetails																				
parent(s)	WellInformation																				
attributes	<table border="1"> <thead> <tr> <th>Name</th> <th>Type</th> <th>Use</th> <th>Fixed</th> </tr> </thead> <tbody> <tr> <td>wellIdentifierIndicator A code to indicate the origin of the Well Identifier.</td> <td>string</td> <td>O</td> <td></td> </tr> <tr> <td>PIDXNumber</td> <td></td> <td></td> <td></td> </tr> <tr> <td>CustomerNumber</td> <td></td> <td></td> <td></td> </tr> <tr> <td>UWIDNumber</td> <td>Other</td> <td></td> <td></td> </tr> </tbody> </table>	Name	Type	Use	Fixed	wellIdentifierIndicator A code to indicate the origin of the Well Identifier.	string	O		PIDXNumber				CustomerNumber				UWIDNumber	Other		
Name	Type	Use	Fixed																		
wellIdentifierIndicator A code to indicate the origin of the Well Identifier.	string	O																			
PIDXNumber																					
CustomerNumber																					
UWIDNumber	Other																				

Well Information

A collection of elements detailing information about a well.

note																																																																																																																																					
level	FieldTicketResponseProperties FieldTicketResponseDetails																																																																																																																																				
children	<table border="1"> <thead> <tr> <th>Name</th> <th>Type</th> <th>Use</th> <th>Max</th> </tr> </thead> <tbody> <tr> <td>WellIdentifier</td> <td>string</td> <td>M</td> <td>U</td> </tr> <tr> <td>A unique identifier referencing a well, such as an PIDX or UWI number.</td> <td></td> <td></td> <td></td> </tr> <tr> <td>WellName</td> <td>string</td> <td>O</td> <td>1</td> </tr> <tr> <td>The customer name of a well.</td> <td></td> <td></td> <td></td> </tr> <tr> <td>WellType</td> <td>string</td> <td>O</td> <td>1</td> </tr> <tr> <td>A code indicating the function of the well.</td> <td></td> <td></td> <td></td> </tr> <tr> <td>Brine</td> <td></td> <td></td> <td></td> </tr> <tr> <td>DirectionalGas</td> <td></td> <td></td> <td></td> </tr> <tr> <td>DirectionalNonWell</td> <td></td> <td></td> <td></td> </tr> <tr> <td>DirectionalOil</td> <td></td> <td></td> <td></td> </tr> <tr> <td>DisposalWell</td> <td></td> <td></td> <td></td> </tr> <tr> <td>Environmental</td> <td>Gas</td> <td></td> <td></td> </tr> <tr> <td>HorizontalGas</td> <td></td> <td></td> <td></td> </tr> <tr> <td>HorizontalOil</td> <td></td> <td></td> <td></td> </tr> <tr> <td>IndustrialDisposal</td> <td></td> <td></td> <td></td> </tr> <tr> <td>IndustrialNonWell</td> <td></td> <td></td> <td></td> </tr> <tr> <td>Injection</td> <td>NonWell</td> <td></td> <td></td> </tr> <tr> <td>Oil</td> <td>Relief</td> <td></td> <td></td> </tr> <tr> <td>Storage</td> <td>Sulfur</td> <td></td> <td></td> </tr> <tr> <td>Thermal</td> <td>Uranium</td> <td></td> <td></td> </tr> <tr> <td>Water</td> <td>Other</td> <td></td> <td></td> </tr> <tr> <td>WellCategory</td> <td>string</td> <td>O</td> <td>1</td> </tr> <tr> <td>A code indicating the category of a well.</td> <td></td> <td></td> <td></td> </tr> <tr> <td>Abandoned</td> <td></td> <td></td> <td></td> </tr> <tr> <td>DevBelow3000</td> <td></td> <td></td> <td></td> </tr> <tr> <td>Development</td> <td></td> <td></td> <td></td> </tr> <tr> <td>ExistingWell</td> <td></td> <td></td> <td></td> </tr> <tr> <td>NonWell</td> <td></td> <td></td> <td></td> </tr> <tr> <td>ReacidizeWell</td> <td></td> <td></td> <td></td> </tr> <tr> <td>Recompletion</td> <td></td> <td></td> <td></td> </tr> <tr> <td>RefractedWell</td> <td>Wildcat</td> <td></td> <td></td> </tr> <tr> <td>Workover</td> <td>Other</td> <td></td> <td></td> </tr> </tbody> </table>	Name	Type	Use	Max	WellIdentifier	string	M	U	A unique identifier referencing a well, such as an PIDX or UWI number.				WellName	string	O	1	The customer name of a well.				WellType	string	O	1	A code indicating the function of the well.				Brine				DirectionalGas				DirectionalNonWell				DirectionalOil				DisposalWell				Environmental	Gas			HorizontalGas				HorizontalOil				IndustrialDisposal				IndustrialNonWell				Injection	NonWell			Oil	Relief			Storage	Sulfur			Thermal	Uranium			Water	Other			WellCategory	string	O	1	A code indicating the category of a well.				Abandoned				DevBelow3000				Development				ExistingWell				NonWell				ReacidizeWell				Recompletion				RefractedWell	Wildcat			Workover	Other		
Name	Type	Use	Max																																																																																																																																		
WellIdentifier	string	M	U																																																																																																																																		
A unique identifier referencing a well, such as an PIDX or UWI number.																																																																																																																																					
WellName	string	O	1																																																																																																																																		
The customer name of a well.																																																																																																																																					
WellType	string	O	1																																																																																																																																		
A code indicating the function of the well.																																																																																																																																					
Brine																																																																																																																																					
DirectionalGas																																																																																																																																					
DirectionalNonWell																																																																																																																																					
DirectionalOil																																																																																																																																					
DisposalWell																																																																																																																																					
Environmental	Gas																																																																																																																																				
HorizontalGas																																																																																																																																					
HorizontalOil																																																																																																																																					
IndustrialDisposal																																																																																																																																					
IndustrialNonWell																																																																																																																																					
Injection	NonWell																																																																																																																																				
Oil	Relief																																																																																																																																				
Storage	Sulfur																																																																																																																																				
Thermal	Uranium																																																																																																																																				
Water	Other																																																																																																																																				
WellCategory	string	O	1																																																																																																																																		
A code indicating the category of a well.																																																																																																																																					
Abandoned																																																																																																																																					
DevBelow3000																																																																																																																																					
Development																																																																																																																																					
ExistingWell																																																																																																																																					
NonWell																																																																																																																																					
ReacidizeWell																																																																																																																																					
Recompletion																																																																																																																																					
RefractedWell	Wildcat																																																																																																																																				
Workover	Other																																																																																																																																				
parent(s)	JobLocationInformation																																																																																																																																				