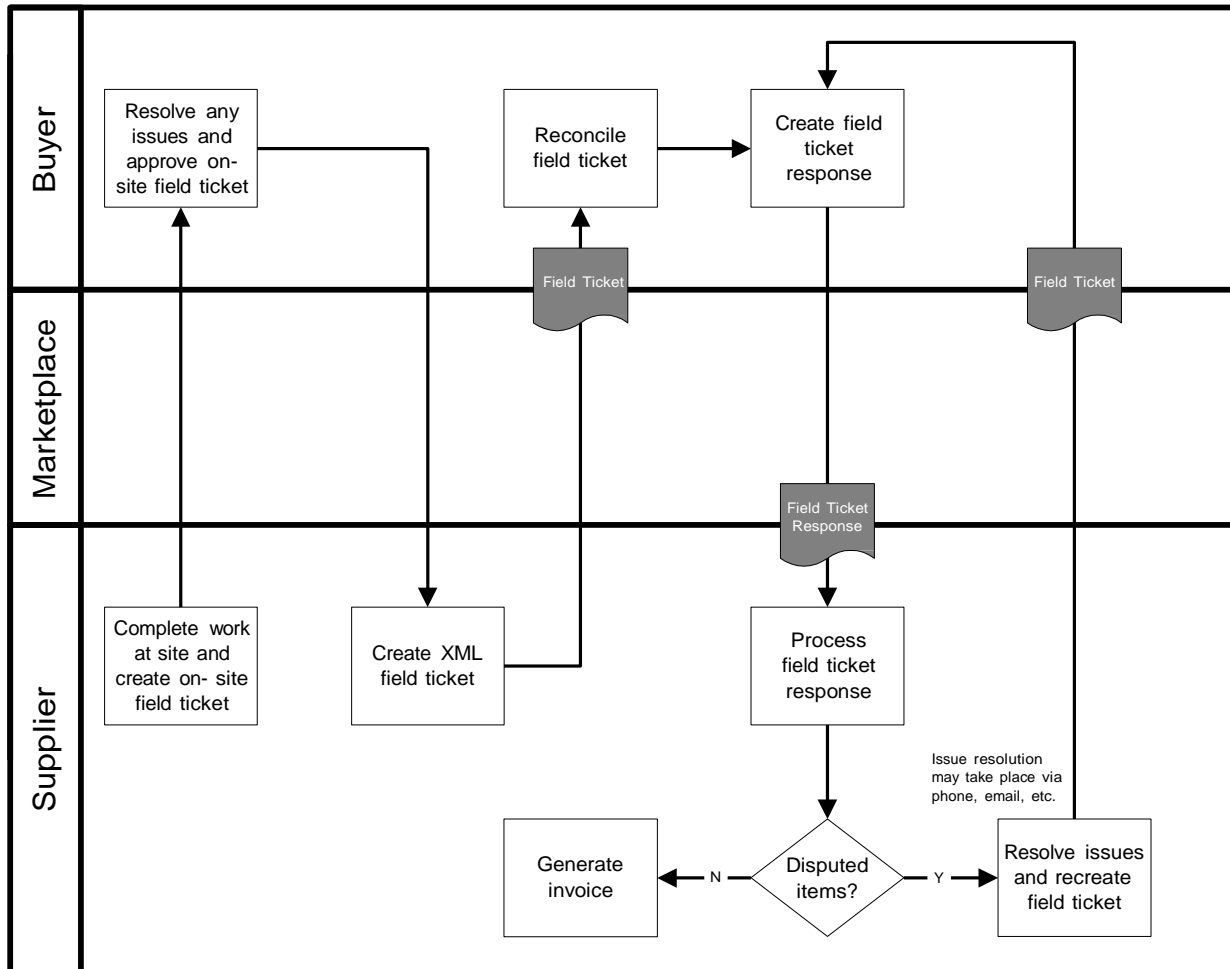


## FieldTicket\_Implementation\_Guide

### 1.0 Field Ticket

#### 1.1 Business Process Diagram

Below is the Business Process Diagram for the Field Ticket transaction. This is not the only method in which the process can take place, however, it represents a primary process. Third parties, including a Marketplace, may be involved if necessary.



**Process Model -** A Seller completes work at a customer site. An on-site field ticket is generated and given to the Buyer for approval. The Buyer approves the field ticket, indicating any changes that might be necessary on the field ticket. The seller uses the on-site field ticket information to create an XML field ticket and sends it to the Buyer. The Buyer processes the XML field ticket and sends a response accepting or disputing the field ticket information in whole or in part. Any disputes are handled by phone, email, etc. If necessary, once disputes are resolved, a corrected field ticket is generated and sent to the Buyer.

The Field Ticket document is used a record of the work done at a Buyer's site. Usually, an on-site field ticket is generated and approved. The XML Field Ticket document is generated after the fact as an electronic record of the field ticket information to be sent to the Buyer.

## 1.2 Legend to Tables

The following tables detail the elements and attributes that make up the Field Ticket. The legend below provides guidance to understanding the element tables. The legend is an example only and is not part of the document standard data.

### Telephone <sup>1</sup>

A collection of elements detailing information about a telephone number. <sup>2</sup>

<sup>3</sup> note					
level	<a href="#">OrderCreateProperties</a> <sup>4</sup> <a href="#">OrderCreateDetails</a>				
children	<sup>5</sup> Name <sup>6</sup> PhoneNumber A numerical sequence to reach a telephone attached to a communication network. PhoneNumberExtension An extension number that is needed to further identify the phone number. TelecomCountryCode The dialing code from another country to access the telephone network in another country. TelecomAreaCode The area code within a country or jurisdiction, if needed, to access local telephones within the country.	Type	Use	Max	
		string <sup>7</sup>	M	1	
		string	O	1	
		string	O	1	
		string	O	1	
parent(s)	<a href="#">ContactInformation</a> <sup>8</sup>				
attributes	<sup>10</sup> Name <sup>11</sup> telephoneIndicator <sup>14</sup> A code to indicate the type of phone number being given. <sup>12</sup> Fax Mobile Pager Voice Other	Type	Use	Fixed	
		string <sup>13</sup>	O		

Legend	
1	The name of the element.
2	The definition of the element.
3	Contains any business rules or comments about the element
4	Identifies whether or not the element is under the Property, Detail, or Summary level of the document
5	Contains the name of the child elements and their definitions. Those elements in blue are links to the element specification. Only those elements that contain children or attributes are hyperlinked.
6	Indicates the data type of the element.
7	Indicates whether the element is mandatory (M) or optional (O).
8	Indicates whether the element can have a maximum of one occurrence (1) or unbounded multiple occurrences (U)
9	Indicates the parent element of the element.
10	Contains the name of any attributes and their definitions.
11	Indicates the data type of the attribute. If the type is blank, then the element contains children rather than data.
12	Indicates whether the attribute is mandatory (M) or optional (O).
13	Provides a fixed value for the attribute.
14	The shaded areas provide either code list values, rules, or notes about the child element or attribute.

The document, its properties, details, line item, sub-line item, and summary elements are presented first. They are followed by an alphabetical listing of those elements used in the document and have children or attributes.

### 1.3 Document Detail

#### FieldTicket

The root element of the Field Ticket message. It is used to send details of work completed during a specified time period.

note				
children	Name	Type	Use	Max
	<a href="#">FieldTicketProperties</a>		M	1
	A collection of elements defining the field ticket "meta-data" or "common data".			
	<a href="#">FieldTicketDetails</a>		M	1
	A collection of elements defining the details of the Field Ticket message.			
	<a href="#">FieldTicketSummary</a>		M	1
	A collection of elements detailing the totals of the field ticket.			
attributes	Name	Type	Use	Fixed
	transactionPurposeIndicator	string	M	
	A code indicating the purpose of the transaction.			
	Add			
	Cancellation			
	Change			
	Confirmation			
	Delete			
	Duplicate			
	Original			
	Replace			
Request				
Other				
version	decimal	M	1.0	
A fixed number indicating the version of the PIDX XML Standard on which the transaction is based.				

## FieldTicketProperties

A collection of elements defining the field ticket "meta-data" or "common data".

note		Type	Use	Max
children	Name			
	FieldTicketNumber	string	M	1
	A unique identifier for a Field Ticket.			
	FieldTicketDate	date	M	1
	The date upon which a field ticket was created or deemed to have been issued.			
	Format is CCYY-MM-DD where "CC" represents the century, "YY" the year, "MM" the month and "DD" the day.			
	<a href="#">PartnerInformation</a>		M	U
	A collection of elements detailing partner information.			
	ApproverName	string	O	1
	The name of the person who approved the document.			
	ApprovalDate	date	O	1
	The date upon which the document was approved.			
	Format is CCYY-MM-DD where "CC" represents the century, "YY" the year, "MM" the month and "DD" the day.			
	<a href="#">CountryOfFinalDestination</a>		O	1
	The country where product is ultimately delivered or is deemed to have been delivered.			
	RevisionNumber	string	O	1
	A number indicating the version of the document. It is used if a message is resent in its entirety to replace an earlier version.			
	<a href="#">PurchaseOrderInformation</a>		O	1
	A collection of elements containing relevant purchase order information which needs to be referenced within other documentation and/or messages.			
	PurchaseOrderLineItemNumber	string	O	1
A sequential individual line identifier within a purchase order document containing product or item information.				
<a href="#">PrimaryCurrency</a>		O	1	
The currency code indicating the currency to be used for the transaction.				
<a href="#">SecondCurrency</a>		O	1	
The currency code indicating a second currency, such as for European countries using the Euro and a local currency.				
<a href="#">ServiceDateTime</a>	datetime	O	U	
The actual and/or schedule dates for a service.				
LanguageCode	string	O	1	
A code indicating the language used for the transaction.				
Use the codelist from ISO 639-2:1998 Codes for the representation of names of languages – Part 2: Alpha-3 Code.				
<a href="#">JobLocationInformation</a>		O	1	
A collection of elements giving details of a job location.				
JobSummary	string	O	1	
A free-form textual summary of the job.				
<a href="#">CountryOfOrigin</a>		O	1	
The country where product originates or is deemed to have originated.				
<a href="#">TransportInformation</a>		O	1	
A collection of elements detailing how product is transported.				
<a href="#">PaymentTerms</a>		O	1	
A collection of elements detailing payment terms information.				
<a href="#">SpecialInstructions</a>	string	O	U	
A free-form textual description of special requirements.				
<a href="#">ReferenceInformation</a>		O	U	
A collection of elements detailing references to information that reside outside of the current transaction message.				
<a href="#">Attachment</a>		O	U	

	A collection of elements defining the details of an attachment to the document. Comment A free-form textual structure for general information or comments.	string	O	1
parent(s)	<a href="#">FieldTicket</a>			

### FieldTicketDetails

A collection of elements defining the details of the Field Ticket message.

note				
children	Name <a href="#">FieldTicketLineItem</a> A collection of elements defining the details of the line items making up the field ticket	Type	Use M	Max U
parent(s)	<a href="#">FieldTicket</a>			

## FieldTicketLineItem

A collection of elements defining the details of the line items making up the field ticket.

note		Type	Use	Max	
children	Name				
	LineItemNumber	string	M	1	
	A sequential individual line identifier within a document containing service or item information. <a href="#">LineItemInformation</a>		M	1	
	A collection of elements detailing identifying information about a line item. <a href="#">FieldTicketQuantity</a>		M	1	
	The number of units of an item or service consumed. <a href="#">CommodityCode</a>	string	O	U	
	A code indicating the categorization of a product or service in accordance with a particular standard. PurchaseOrderSubLineItemNumber	string	O	1	
	A sequential individual sub-line identifier within an Order Create document containing product or item information that relates back to a parent line item. <a href="#">PurchaseOrderInformation</a>		O	1	
	A collection of elements containing relevant purchase order information which needs to be referenced within other documentation and/or messages. <a href="#">PersonnelInformation</a>		O	U	
	A collection of elements detailing relevant personnel information. <a href="#">PartnerInformation</a>		O	U	
	A collection of elements detailing partner information. <a href="#">JobLocationInformation</a>		O	1	
	A collection of elements giving details of a job location. <a href="#">Pricing</a>		O	1	
	A collection of elements detailing price information. <a href="#">AllowanceOrCharge</a>		O	U	
	A collection of elements defining the details of an allowance or charge to the customer. <a href="#">Tax</a>		O	U	
	A collection of elements detailing information about tax applied to a transaction. <a href="#">ShippingAmount</a>		O	1	
	The monetary amount of shipping or freight charges. <a href="#">LineItemTotal</a>		O	1	
	The net total monetary amount for the line item. <a href="#">ServiceDateTime</a>	datetime	O	U	
	The actual and/or schedule dates for a service. EquipmentIdentifier	string	O	U	
	A unique identifier for a piece of equipment such as used for transportation of product. EquipmentDescription	string	O	U	
	A free-form textual description of carrier equipment. <a href="#">CountryOfOrigin</a>		O	1	
	The country where product originates or is deemed to have originated. <a href="#">CountryOfFinalDestination</a>		O	1	
	The country where product is ultimately delivered or is deemed to have been delivered. <a href="#">TransportInformation</a>		O	1	
	A code indicating the mode of transportation used to move product. <a href="#">PaymentTerms</a>		O	1	
	A collection of elements detailing payment terms information. <a href="#">SpecialInstructions</a>	string	O	U	
	A free-form textual description of special requirements. PackagingCharacteristicCode	string	O	U	
	A code indicating the marking, packaging, loading and related characteristics being				

	described.			
	PackageSpecifications			
	ProductMarking			
	SkidPalletType			
	TypeOfPackage			
	Other			
	PackagingCharacteristicDescription	string	O	U
	Free-form text providing any additional information associated with the Packaging Characteristic Code.			
	<a href="#">ReferenceInformation</a>		O	U
	A collection of elements detailing references to information that reside outside of the current transaction message.			
	<a href="#">Attachment</a>		O	U
	A collection of elements defining the details of an attachment to the document.			
	Comment	string	O	1
	A free-form textual structure for general information or comments.			
	<a href="#">FieldTicketSubLineItem</a>		O	U
	A collection of elements defining the details of the sub line items of a field ticket. It is used if a line item needs to be broken down into further detail.			
parent(s)	<a href="#">FieldTicketDetails</a>			

## FieldTicketSubLineItem

A collection of elements defining the details of the sub line items of a field ticket. It is used if a line item needs to be broken down into further detail.

note		Type	Use	Max	
children	Name				
	SubLineItemNumber	string	M	1	
	The sub-line item number relating to the primary line item referenced in the message.				
	<a href="#">LineItemInformation</a>			M	1
	A collection of elements detailing identifying information about a line item.				
	<a href="#">FieldTicketQuantity</a>			M	1
	The number of units of an item or service consumed.				
	<a href="#">CommodityCode</a>	string	O	U	
	A code indicating the categorization of a product or service in accordance with a particular standard.				
	PurchaseOrderSubLineItemNumber	string	O	1	
	A sequential individual sub-line identifier within an Order Create document containing product or item information that relates back to a parent line item.				
	<a href="#">PurchaseOrderInformation</a>			O	1
	A collection of elements containing relevant purchase order information which needs to be referenced within other documentation and/or messages.				
	<a href="#">PersonnelInformation</a>			O	U
	A collection of elements detailing relevant personnel information.				
	<a href="#">PartnerInformation</a>			O	U
	A collection of elements detailing partner information.				
	<a href="#">JobLocationInformation</a>			O	1
	A collection of elements giving details of a job location.				
	<a href="#">Pricing</a>			O	1
	A collection of elements detailing price information.				
	<a href="#">AllowanceOrCharge</a>			O	U
	A collection of elements defining the details of an allowance or charge to the customer.				
	<a href="#">Tax</a>			O	U
	A collection of elements detailing information about tax applied to a transaction.				
	<a href="#">ShippingAmount</a>			O	1
	The monetary amount of shipping or freight charges.				
<a href="#">LineItemTotal</a>			O	1	
The net total monetary amount for the line item.					
<a href="#">ServiceDateTime</a>	datetime	O	U		
The actual and/or schedule dates for a service.					
EquipmentIdentifier	string	O	U		
A unique identifier for a piece of equipment such as used for transportation of product.					
EquipmentDescription	string	O	U		
A free-form textual description of carrier equipment.					
<a href="#">CountryOfOrigin</a>			O	1	
The country where product originates or is deemed to have originated.					
<a href="#">CountryOfFinalDestination</a>			O	1	
The country where product is ultimately delivered or is deemed to have been delivered.					
<a href="#">TransportInformation</a>			O	1	
A code indicating the mode of transportation used to move product.					
<a href="#">PaymentTerms</a>			O	1	
A collection of elements detailing payment terms information.					
<a href="#">SpecialInstructions</a>	string	O	U		
A free-form textual description of special requirements.					
PackagingCharacteristicCode	string	O	U		
A code indicating the marking, packaging, loading and related characteristics being described.					



	PackageSpecifications			
	ProductMarking			
	SkidPalletType			
	TypeOfPackage			
	Other			
	PackagingCharacteristicDescription	string	O	U
	Free-form text providing any additional information associated with the Packaging Characteristic Code.			
	<a href="#">ReferenceInformation</a>		O	U
	A collection of elements detailing references to information that reside outside of the current transaction message.			
	<a href="#">Attachment</a>		O	U
	A collection of elements defining the details of an attachment to the document.			
	Comment	string	O	1
	A free-form textual structure for general information or comments.			
parent(s)	<a href="#">FieldTicketLineItem</a>			

### FieldTicketSummary

A collection of elements detailing the totals of the field ticket.

note		Type	Use	Max
children	Name			
	TotalLineItems	integer	M	1
	The total number of line items contained in a message.			
	<a href="#">AllowanceOrCharge</a>		O	U
	A collection of elements defining the details of an allowance or charge to the customer.			
	<a href="#">ShippingAmount</a>		O	U
	The monetary amount of shipping or freight charges.			
	<a href="#">Tax</a>		O	U
	A collection of elements detailing information about tax applied to a transaction.			
	<a href="#">SubTotalAmount</a>		O	U
	The monetary amount of the subtotal. It is qualified by the subTotalIndicator attribute which identifies what the subtotal is referencing.			
	<a href="#">FieldTicketTotal</a>		O	1
	The total monetary amount of the field ticket.			
	<a href="#">TermsDiscountAmount</a>		O	1
	The total monetary amount of the payment terms discount.			
	<a href="#">DiscountedAmountDue</a>		O	1
	The monetary amount due if paid by terms discount due date (total invoice or installment amount less cash discount.)			
parent(s)	<a href="#">FieldTicket</a>			

## AddressInformation

A collection of elements defining the details of an address.

note				
level	<a href="#">FieldTicketProperties</a> <a href="#">FieldTicketDetails</a>			
children	Name	Type	Use	Max
	POBoxNumber The identity of a physical box within a postal facility to accept and receive mail.	string	O	1
	BuildingHouseNumber The alphanumeric identifier of a building as a part of an address.	string	O	1
	StreetName The name of a street as part of an address.	string	O	1
	AddressLine An occurrence of a generally accepted formatted line of data such that when combined with the entire address structure there is sufficient information for delivery or location purposes.	string	O	U
	CityName The name of the city or municipality.	string	O	1
	StateProvince The name of the municipality or town as a location for mailing, siting and other geographic functions.	string	O	1
	PostalCode The code assigned by local postal authorities to delivery addresses.	string	O	1
	<a href="#">PostalCountry</a> The country code indicating the country to which mail should be delivered.		O	1
	CountyName The name of the county.	string	O	1
	LocationIdentifier A unique identifier for a physical location.			
parent(s)	<a href="#">JobLocationInformation</a> <a href="#">Location</a> <a href="#">PartnerInformation</a> <a href="#">TaxLocation</a>			



### AllowanceOrChargePercent

The allowance or charge expressed as a percentage.

note				
level	<a href="#">FieldTicketDetails</a> <a href="#">FieldTicketSummary</a>			
parent(s)	<a href="#">AllowanceOrCharge</a>			
attributes	Name	Type	Use	Fixed
	percentIndicator	string	O	
	A code indicating on what basis the allowance or charge percent is calculated.			

### AllowanceOrChargeQuantity

The quantity on which the allowance or charge is based if it is different from the purchase order or invoice quantity.

note				
level	<a href="#">FieldTicketDetails</a> <a href="#">FieldTicketSummary</a>			
children	Name	Type	Use	Max
	Quantity	decimal	M	1
	A numeric count of measure.			
	UnitOfMeasureCode	string	M	1
	A code identifying the units in which measurement is expressed.			
	Use values from the DE 355 code list contained in ASC X12 release 3030.			
parent(s)	<a href="#">AllowanceOrCharge</a>			

### AllowanceOrChargeRate

The rate per unit of the allowance or charge.

note				
level	<a href="#">FieldTicketDetails</a> <a href="#">FieldTicketSummary</a>			
children	Name	Type	Use	Max
	MonetaryAmount	decimal	M	1
	The currency value of a transaction or item.			
	UnitOfMeasureCode	string	M	1
	A code identifying the units in which measurement is expressed.			
	Use values from the DE 355 code list contained in ASC X12 release 3030.			
	CurrencyCode	string	O	1
	A code indicating the currency in which the monetary amount is specified.			
	Use the codelist from ISO 4217:2001 Codes for the representation of currencies and funds.			
parent(s)	<a href="#">AllowanceOrCharge</a>			

### AllowanceOrChargeTotalAmount

The total monetary amount for the allowance or charge.

note				
level	<a href="#">FieldTicketDetails</a> <a href="#">FieldTicketSummary</a>			
children	Name	Type	Use	Max
	MonetaryAmount	decimal	M	1
	The currency value of a transaction or item.			
	CurrencyCode	string	O	1
	A code indicating the currency in which the monetary amount is specified.			
	Use the codelist from ISO 4217:2001 Codes for the representation of currencies and funds.			

parent(s)	<a href="#">AllowanceOrCharge</a>
-----------	-----------------------------------

### AlternativeCommunicationMethod

Additional methods of communication, such as an IP Address or Printer ID, in addition to those specifically listed elsewhere in contact or address information.

note																																																									
level	<a href="#">FieldTicketProperties</a> <a href="#">FieldTicketDetails</a>																																																								
parent(s)	<a href="#">ContactInformation</a>																																																								
attributes	<table border="1"> <thead> <tr> <th>Name</th> <th>Type</th> <th>Use</th> <th>Fixed</th> </tr> </thead> <tbody> <tr> <td>alternativeCommunicationMethodIndicator</td> <td>string</td> <td>M</td> <td></td> </tr> <tr> <td colspan="4">A code to indicate the type of alternative communication method.</td> </tr> <tr> <td>AUTOVON</td> <td></td> <td></td> <td></td> </tr> <tr> <td>EDIAccessNumber</td> <td></td> <td></td> <td></td> </tr> <tr> <td>FederalTelecommunicationsSystem</td> <td></td> <td></td> <td></td> </tr> <tr> <td>IPAddress</td> <td></td> <td></td> <td></td> </tr> <tr> <td>PacketSwitching</td> <td></td> <td></td> <td></td> </tr> <tr> <td>PrinterID</td> <td></td> <td></td> <td></td> </tr> <tr> <td>StationCode</td> <td></td> <td></td> <td></td> </tr> <tr> <td>Telemail</td> <td></td> <td></td> <td></td> </tr> <tr> <td>Telex</td> <td></td> <td></td> <td></td> </tr> <tr> <td>TWX</td> <td></td> <td></td> <td></td> </tr> <tr> <td>Other</td> <td></td> <td></td> <td></td> </tr> </tbody> </table>	Name	Type	Use	Fixed	alternativeCommunicationMethodIndicator	string	M		A code to indicate the type of alternative communication method.				AUTOVON				EDIAccessNumber				FederalTelecommunicationsSystem				IPAddress				PacketSwitching				PrinterID				StationCode				Telemail				Telex				TWX				Other			
Name	Type	Use	Fixed																																																						
alternativeCommunicationMethodIndicator	string	M																																																							
A code to indicate the type of alternative communication method.																																																									
AUTOVON																																																									
EDIAccessNumber																																																									
FederalTelecommunicationsSystem																																																									
IPAddress																																																									
PacketSwitching																																																									
PrinterID																																																									
StationCode																																																									
Telemail																																																									
Telex																																																									
TWX																																																									
Other																																																									

### Attachment

A collection of elements defining the details of an attachment to the document.

note																																																													
level	<a href="#">FieldTicketProperties</a> <a href="#">FieldTicketDetails</a>																																																												
children	<table border="1"> <thead> <tr> <th>Name</th> <th>Type</th> <th>Use</th> <th>Max</th> </tr> </thead> <tbody> <tr> <td>AttachmentPurposeCode</td> <td>string</td> <td>O</td> <td>1</td> </tr> <tr> <td colspan="4">A code to indicate the purpose of the attachment.</td> </tr> <tr> <td>Template</td> <td></td> <td></td> <td></td> </tr> <tr> <td>Other</td> <td></td> <td></td> <td></td> </tr> <tr> <td>FileName</td> <td>string</td> <td>O</td> <td>1</td> </tr> <tr> <td colspan="4">The name of the file in an attachment.</td> </tr> <tr> <td>AttachmentTitle</td> <td>string</td> <td>O</td> <td>1</td> </tr> <tr> <td colspan="4">The title of the attachment.</td> </tr> <tr> <td>AttachmentDescription</td> <td>string</td> <td>O</td> <td>1</td> </tr> <tr> <td colspan="4">A free-form textual description of the attachment.</td> </tr> <tr> <td>FileType</td> <td>string</td> <td>O</td> <td>1</td> </tr> <tr> <td colspan="4">The type of the file in an attachment.</td> </tr> <tr> <td>AttachmentLocation</td> <td>string</td> <td>O</td> <td>1</td> </tr> <tr> <td colspan="4">The location of the attachment, such as a URL.</td> </tr> </tbody> </table>	Name	Type	Use	Max	AttachmentPurposeCode	string	O	1	A code to indicate the purpose of the attachment.				Template				Other				FileName	string	O	1	The name of the file in an attachment.				AttachmentTitle	string	O	1	The title of the attachment.				AttachmentDescription	string	O	1	A free-form textual description of the attachment.				FileType	string	O	1	The type of the file in an attachment.				AttachmentLocation	string	O	1	The location of the attachment, such as a URL.			
Name	Type	Use	Max																																																										
AttachmentPurposeCode	string	O	1																																																										
A code to indicate the purpose of the attachment.																																																													
Template																																																													
Other																																																													
FileName	string	O	1																																																										
The name of the file in an attachment.																																																													
AttachmentTitle	string	O	1																																																										
The title of the attachment.																																																													
AttachmentDescription	string	O	1																																																										
A free-form textual description of the attachment.																																																													
FileType	string	O	1																																																										
The type of the file in an attachment.																																																													
AttachmentLocation	string	O	1																																																										
The location of the attachment, such as a URL.																																																													
parent(s)	<a href="#">FieldTicketLineItem</a> <a href="#">FieldTicketProperties</a> <a href="#">FieldTicketSubLineItem</a>																																																												

## Block

A collection of elements defining the details of a block, which identifies a location.

note				
level	<a href="#">FieldTicketProperties</a> <a href="#">FieldTicketDetails</a>			
children	Name	Type	Use	Max
	BlockName	string	O	1
	The name of the block, which identifies a location.			
	OCSGNumber	string	O	1
	The Outer Continental Shelf Gulf number.			
	StateLease	string	O	1
	Lease on state land.			
parent(s)	<a href="#">GeographicalInformation</a>			

## CommodityCode

A code indicating the categorization of a product or service in accordance with a particular standard.

note				
level	<a href="#">FieldTicketDetails</a>			
parent(s)	<a href="#">FieldTicketLineItem</a> <a href="#">FieldTicketSubLineItem</a>			
attributes	Name	Type	Use	Fixed
	agencyIndicator	string	O	
	A code indicating what agency or organization is responsible for defining the commodity code list.			

## ContactIdentifier

The identifier of the contact person or department.

note				
level	<a href="#">FieldTicketProperties</a> <a href="#">FieldTicketDetails</a>			
parent(s)	<a href="#">ContactInformation</a>			
attributes	Name	Type	Use	Fixed
	contactIdentifierIndicator	string	O	
	A code to identify the origin of the contact identifier.			
	AssignedByBuyer			
	AssignedBySeller			
	EmployeeID			
	Other			

## ContactInformation

A collection of elements defining details of communication for a contact person.

note	• It is recommended that ContactInformation be used at either the Property or Detail level, but not both.			
level	<a href="#">FieldTicketProperties</a> <a href="#">FieldTicketDetails</a>			
children	Name <a href="#">ContactIdentifier</a> The identifier of the contact person or department. ContactName The name of the contact person within the organization. ContactDescription A free-form textual description of the contact. <a href="#">Telephone</a> A collection of elements detailing information about a telephone number. EmailAddress The address assigned to a person or organization to receive electronic messages. <a href="#">AlternativeCommunicationMethod</a> Additional methods of communication, such as an IP Address or Printer ID, in addition to those specifically listed elsewhere in contact or address information.	Type	Use	Max
		string	O	1
		string	O	1
		string	O	1
			O	U
		string	O	1
		string	O	U
parent(s)	<a href="#">PartnerInformation</a>			
attributes	Name contactInformationIndicator A code indicating the function of the contact. BuyerDepartment DeliveryContact DesignEngineer Engineer EnteredBy FieldRepresentative OfficeRepresentative OrderContact PurchasingAgent QuotePreparer QuoteRequestor RFQContact SalesRepresentative ServiceCoordinator TechnicalMarketingRepresentative Other	Type	Use	Fixed
		string	M	

## CountryOfFinalDestination

The country where product is ultimately delivered or is deemed to have been delivered.

note				
level	<a href="#">FieldTicketProperties</a> <a href="#">FieldTicketDetails</a>			
children	Name CountryCode A code indicating a country. Use the codelist from ISO 3166-1:1997 Codes for the representation of names of countries and their subdivisions – Part 1: Country Codes.	Type	Use	Max
		string	M	1
parent(s)	<a href="#">FieldTicketLineItem</a> <a href="#">FieldTicketProperties</a> <a href="#">FieldTicketSubLineItem</a>			





## CountryOfOrigin

The country where product originates or is deemed to have originated.

note				
level	<a href="#">FieldTicketProperties</a> <a href="#">FieldTicketDetails</a>			
children	Name CountryCode A code indicating a country. Use the codelist from ISO 3166-1:1997 Codes for the representation of names of countries and their subdivisions – Part 1: Country Codes.	Type string	Use M	Max 1
parent(s)	<a href="#">FieldTicketLineItem</a> <a href="#">FieldTicketProperties</a> <a href="#">FieldTicketSubLineItem</a>			

## Deferred

The terms for a deferred payment in relation to a transaction.

note				
level	<a href="#">FieldTicketProperties</a> <a href="#">FieldTicketDetails</a>			
children	Name <a href="#">DeferredAmount</a> The monetary amount that is deferred for payment based upon terms in an invoice, contract or agreement. DeferredDueDate The date upon which a deferred payment is due. Format is CCYY-MM-DD where "CC" represents the century, "YY" the year, "MM" the month and "DD" the day. PercentDeferredPayable The amount due that is deferred for payment expressed as a percentage. Description A free-form textual explanation or clarification.	Type date decimal string	Use O O O	Max 1 1 1 1
parent(s)	<a href="#">PaymentTerms</a>			

## DeferredAmount

The monetary amount that is deferred for payment based upon terms in an invoice, contract or agreement.

note				
level	<a href="#">FieldTicketProperties</a> <a href="#">FieldTicketDetails</a>			
children	Name MonetaryAmount The currency value of a transaction or item. CurrencyCode A code indicating the currency in which the monetary amount is specified. Use the codelist from ISO 4217:2001 Codes for the representation of currencies and funds.	Type decimal string	Use M O	Max 1 1
parent(s)	<a href="#">Deferred</a>			

### DiscountAmount

The monetary amount of a discount based upon payment terms.

note				
level	<a href="#">FieldTicketProperties</a> <a href="#">FieldTicketDetails</a>			
children	Name	Type	Use	Max
	MonetaryAmount	decimal	M	1
	The currency value of a transaction or item.			
	CurrencyCode	string	O	1
	A code indicating the currency in which the monetary amount is specified.			
	Use the codelist from ISO 4217:2001 Codes for the representation of currencies and funds.			
parent(s)	<a href="#">Discounts</a>			

### DiscountedAmountDue

The monetary amount due if paid by terms discount due date (total invoice or installment amount less cash discount.)

note				
level	<a href="#">FieldTicketSummary</a>			
children	Name	Type	Use	Max
	MonetaryAmount	decimal	M	1
	The currency value of a transaction or item.			
	CurrencyCode	string	O	1
	A code indicating the currency in which the monetary amount is specified.			
	Use the codelist from ISO 4217:2001 Codes for the representation of currencies and funds.			
parent(s)	<a href="#">FieldTicketSummary</a>			

### Discounts

The monetary amount allowed or applied as a credit against a transaction or balance.

note				
level	<a href="#">FieldTicketProperties</a> <a href="#">FieldTicketDetails</a>			
children	Name	Type	Use	Max
	DaysDue	integer	O	1
	The number of days from the payment terms basis date before a discount expires.			
	DiscountsDueDate	date	O	1
	The date upon which a discount expires.			
	Format is CCYY-MM-DD where "CC" represents the century, "YY" the year, "MM" the month and "DD" the day.			
	PercentDiscount	decimal	O	1
	A discount to be applied to the transaction expressed as a percentage.			
	<a href="#">DiscountAmount</a>		O	1
	The monetary amount of a discount based upon payment terms.			
	Description	string	O	1
	A free-form textual explanation or clarification.			
parent(s)	<a href="#">PaymentTerms</a>			

### EffectiveDates

The period of time (or range) where the information is valid or guaranteed.

note				
level	<a href="#">FieldTicketProperties</a> <a href="#">FieldTicketDetails</a>			
children	Name	Type	Use	Max
	FromDate The date upon which a time period begins. Format is CCYY-MM-DD where "CC" represents the century, "YY" the year, "MM" the month and "DD" the day.	date	M	1
children	ToDate The date upon which a time period ends. Format is CCYY-MM-DD where "CC" represents the century, "YY" the year, "MM" the month and "DD" the day.	date	M	1
	parent(s) <a href="#">TaxInformation</a>			

### FieldTicketQuantity

The number of units of an item or service consumed.

note				
level	<a href="#">FieldTicketProperties</a> <a href="#">FieldTicketDetails</a>			
children	Name	Type	Use	Max
	Quantity A numeric count of measure.	decimal	M	1
children	UnitOfMeasureCode A code identifying the units in which measurement is expressed. Use values from the DE 355 code list contained in ASC X12 release 3030.	string	M	1
	parent(s) <a href="#">FieldTicketLineItem</a> <a href="#">FieldTicketSubLineItem</a>			

### FieldTicketTotal

The total monetary amount of the field ticket.

note				
level	<a href="#">FieldTicketSummary</a>			
children	Name	Type	Use	Max
	<a href="#">MonetaryAmount</a> The currency value of a transaction or item.	decimal	M	1
children	CurrencyCode A code indicating the currency in which the monetary amount is specified. Use the codelist from ISO 4217:2001 Codes for the representation of currencies and funds.	string	O	1
	parent(s) <a href="#">FieldTicketSummary</a>			

## GeographicalInformation

A collection of elements defining a geographical location.

note	• If any one of Section, Township, or Range is given then the other two are required.			
level	<a href="#">FieldTicketProperties</a> <a href="#">FieldTicketDetails</a>			
children	Name	Type	Use	Max
	FieldName	string	O	1
	The name of the oil field.			
	Section	string	O	1
	A part of Section/Township/Range location identifier scheme.			
	Township	string	O	1
	A part of Section/Township/Range location identifier scheme.			
	Range	string	O	1
A part of Section/Township/Range location identifier scheme.				
Region	string	O	1	
The name of a geographic region.				
	<a href="#">Block</a>		O	1
A collection of elements defining the details of a block, which identifies a location.				
	<a href="#">GPSCoordinates</a>		O	1
A collection of elements containing latitude and longitude data for a specific location.				
parent(s)	<a href="#">JobLocationInformation</a> <a href="#">Location</a>			

## GPSCoordinates

A collection of elements containing latitude and longitude data for a specific location.

note				
level	<a href="#">FieldTicketProperties</a> <a href="#">FieldTicketDetails</a>			
children	Name	Type	Use	Max
	Latitude	string	M	1
	The specified latitude of a location.			
	Longitude	string	M	1
The specified longitude of a location.				
parent(s)	<a href="#">GeographicalInformation</a>			

## HazardousMaterialClassCode

A code indicating the kind of hazard for a material.

note				
level	<a href="#">FieldTicketProperties</a> <a href="#">FieldTicketDetails</a>			
parent(s)	<a href="#">HazardousMaterials</a>			
attributes	Name	Type	Use	Fixed
	hazardousMaterialIndicator	string	M	
A code which qualifies the Hazardous Material Class Code.				

### HazardousMaterials

A collection of elements conveying hazardous goods information related to a product.

note	• If HazardousMaterials is used, then at least one of SpecialHandlingCode or HazardousMaterialDescription is required.			
level	<a href="#">FieldTicketProperties</a> <a href="#">FieldTicketDetails</a>			
children	Name	Type	Use	Max
	SpecialHandlingCode A code identifying any special transportation handling instructions	string	O	1
	HazardousMaterialDescription A free-form textual explanation of information related to a hazardous shipment.	string	O	1
	<a href="#">HazardousMaterialClassCode</a> A code indicating the kind of hazard for a material.	string	O	U
parent(s)	<a href="#">TransportInformation</a>			

### JobLocationIdentifier

A unique identifier referencing the job location.

note				
level	<a href="#">FieldTicketProperties</a> <a href="#">FieldTicketDetails</a>			
parent(s)	<a href="#">JobLocationInformation</a>			
attributes	Name	Type	Use	Fixed
	jobLocationIdentifierIndicator A code to define what type of location the identifier is referencing.	string	O	
	ChemicalPlant			
	Coal-Degas			
	CogenerationPlant			
	Construction			
	Dock			
	GasPlant			
	IndustrialServiceMiscellaneous			
	MilitaryGovernment			
	PaperMill			
	PetroleumPlant			
	Pipeline			
	Refinery			
	Rig			
	UtilityPlant			
	Other			

### JobLocationInformation

A collection of elements giving details of a job location.

note				
level	<a href="#">FieldTicketProperties</a> <a href="#">FieldTicketDetails</a>			
children	<p>Name <a href="#">JobLocationIdentifier</a> A unique identifier referencing the job location.</p> <p>JobLocationClassCode A code indicating the class of the job location.</p> <p>FederalWaters Land InlandWaters StateWaters Other</p> <p>JobLocationDescription A free-form textual description of the job location.</p> <p>JobLocationStatus A code indicating whether a location is active or inactive.</p> <p>Inactive Active Other</p> <p><a href="#">WellInformation</a> A collection of elements detailing information about a well.</p> <p>JobSiteCategory A code indicating the kind of site on which the job is located.</p> <p>Boiler CivilHighways Compression Condenser ConstructPiles Dams HeatExchanger IndustrialServiceMiscellaneous Piping Production TowerVessel Turbine UndergroundStr Other</p> <p><a href="#">AddressInformation</a> A collection of elements defining the details of an address.</p> <p><a href="#">GeographicalInformation</a> A collection of elements defining a geographical location.</p>	Type	Use	Max
		string	O	U
		string	O	1
		string	O	1
		string	O	1
			O	1
		string	O	1
			O	1
			O	1
parent(s)	<a href="#">FieldTicketLineItem</a> <a href="#">FieldTicketProperties</a> <a href="#">FieldTicketSubLineItem</a>			

### LinItemIdentifier

The unique identifier for a product or service making up the line item.

note				
level	<a href="#">FieldTicketDetails</a>			
parent(s)	<a href="#">LinItemInformation</a>			
attributes	Name	Type	Use	Fixed
	identifierIndicator	string	M	
	A code to indicate the origin of the identifier.			
	AssignedByBuyer			
	AssignedByManufacturer			
	AssignedBySeller			
	CatalogueNumber			
	UPCNumber			
	Other			

### LinItemInformation

A collection of elements detailing identifying information about a line item.

note				
level	<a href="#">FieldTicketDetails</a>			
children	Name	Type	Use	Max
	<a href="#">LinItemIdentifier</a>	string	O	U
	The unique identifier for a product or service making up the line item.			
	LinItemName	string	O	1
	The name of the product or service in the line item.			
	LinItemDescription	string	O	1
	A free-form textual description of the line item.			
	ManufacturerIdentifier	string	O	1
	A unique identifier for a manufacturer.			
parent(s)	<a href="#">FieldTicketLinItem</a> <a href="#">FieldTicketSubLinItem</a>			

### LinItemTotal

The net total monetary amount for the line item.

note				
level	<a href="#">FieldTicketDetails</a>			
children	Name	Type	Use	Max
	MonetaryAmount	decimal	M	1
	The currency value of a transaction or item.			
	CurrencyCode	string	O	1
	A code indicating the currency in which the monetary amount is specified.			
	Use the codelist from ISO 4217:2001 Codes for the representation of currencies and funds.			
parent(s)	<a href="#">FieldTicketLinItem</a> <a href="#">FieldTicketSubLinItem</a>			

## Location

A collection of elements giving details about a location.

note				
level	<a href="#">FieldTicketProperties</a> <a href="#">FieldTicketDetails</a>			
children	Name	Type	Use	Max
	LocationIdentifier	string	O	1
	A unique identifier for a physical location.			
	LocationName	string	O	1
	The name of the location being referenced.			
	<a href="#">AddressInformation</a>		O	1
	A collection of elements defining the details of an address.			
	<a href="#">GeographicalInformation</a>		O	1
	A collection of elements defining a geographical location.			
	LocationDescription	string	O	1
	Free-form textual description of the location.			
parent(s)	<a href="#">TransportInformation</a>			
attributes	Name	Type	Use	Fixed
	locationIndicator	string	O	
	A code to identify what kind of location is being referenced.			
	FreightEqualizationPoint			
	OnVessel-FOBPoint			
	AssignedBySeller			
	Origin-AfterLoadingOnEquipment			
	Origin-ShippingPoint			
	Plant			
	ShippingDestination			
	Warehouse			
	Other			

## MeasurementRange

A collection of elements providing a minimum and maximum measurement to create a range.

note				
level	<a href="#">FieldTicketProperties</a> <a href="#">FieldTicketDetails</a>			
children	Name	Type	Use	Max
	MinimumMeasurement	decimal	M	1
	The smallest measurement in a given range.			
	MaximumMeasurement	decimal	M	1
	The largest measurement in a given range.			
parent(s)	<a href="#">PriceBasis</a>			



### PartnerIdentifier

A unique identifier indicating a particular partner or organization.

note				
level	<a href="#">FieldTicketProperties</a> <a href="#">FieldTicketDetails</a>			
parent(s)	<a href="#">PartnerInformation</a>			
attributes	<p>Name</p> <p>partnerIdentifierIndicator</p> <p>A code to identify the origin of the Partner Identifier.</p> <p>AssignedByBuyer</p> <p>AssignedBySeller</p> <p>DUNSNumber</p> <p>DUNS+4Number</p> <p>Other</p>	Type string	Use M	Fixed

**PartnerInformation**

A collection of elements detailing partner information.

note				
level	<a href="#">FieldTicketProperties</a> <a href="#">FieldTicketDetails</a>			
children	Name <a href="#">PartnerIdentifier</a> A unique identifier indicating a particular partner or organization. PartnerName The name of the organization being referenced in Partner Information. <a href="#">AddressInformation</a> A collection of elements defining the details of an address. <a href="#">ContactInformation</a> A collection of elements defining details of communication for a contact person. <a href="#">TaxInformation</a> A collection of elements detailing tax information about a partner. URL A Uniform Resource Locator indicating an internet address.	Type string  string  string  string  string	Use M  O  O  O  O	Max U  1  1  U  1  1
parent(s)	<a href="#">FieldTicketLineItem</a> <a href="#">FieldTicketProperties</a> <a href="#">FieldTicketSubLineItem</a> <a href="#">TransportInformation</a>			
attributes	Name partnerRoleIndicator A code to indicate the role in this transaction of the partner being referenced. BillAndShipTo BillTo Carrier CommissionPayee FinalRecipient Manufacturer Marketplace MaterialIssuer OnsiteContractingCompany OperatingCompany Payer PrimaryContractor RemitTo Seller ShipFromParty ShipToParty SoldTo ThirdParty Vendor Warehouse Other	Type string	Use M	Fixed

## PaymentTerms

A collection of elements detailing payment terms information.

note	<ul style="list-style-type: none"> <li>If either one of PercentDiscount or DiscountAmount is used, then at least one of DiscountsDueDate or DaysDue is required.</li> <li>If DeferredDueDate is used, then at least one of DeferredAmountDue or PercentOfInvoicePayable is required.</li> </ul>			
level	<a href="#">FieldTicketProperties</a> <a href="#">FieldTicketDetails</a>			
children	Name	Type	Use	Max
	PaymentTermsOfSale	string	O	1
	The terms on which payment is calculated for the transaction.			
	Description	string	O	1
	A free-form textual explanation or clarification.			
	PaymentTermsBasisDateCode	string	O	1
	A code identifying the beginning of the terms period.			
	DeliveryDate			
	InvoiceDate			
	InvoiceReceiptDate			
	Other			
	PaymentTermsBasisDate	date	O	1
	The date from which payment terms or discounts are calculated or based.			
	Format is CCYY-MM-DD where "CC" represents the century, "YY" the year, "MM" the month and "DD" the day.			
	TermsNetDays	integer	O	1
	The number of days until the total invoice amount is due (discount not applicable).			
	PercentOfInvoicePayable	decimal	O	1
	The amount of an invoice payable expressed as a percentage.			
	<a href="#">Discounts</a>		O	1
	The monetary amount allowed or applied as a credit against a transaction or balance.			
	<a href="#">Deferred</a>		O	1
	The terms for a deferred payment in relation to a transaction.			
	Penalty	string	O	1
	A percentage used to calculate the penalty on any balance unpaid by the due date.			
parent(s)	<a href="#">FieldTicketLinItem</a> <a href="#">FieldTicketProperties</a> <a href="#">FieldTicketSubLinItem</a>			

## PersonnelInformation

A collection of elements detailing relevant personnel information.

note				
level	<a href="#">FieldTicketDetails</a>			
children	Name	Type	Use	Max
	PersonnelName	string	O	1
	The name of the person being referenced.			
	CompanyName	string	O	1
	The name of the company.			
	PersonnelIdentifier	string	O	1
	A unique identifier for an employee of an organization.			
	<a href="#">TimeWorked</a>		O	1
	The time period worked by a specific employee completing a service.			
	JobDescription	string	O	1
	A free-form textual description of the job.			
	Comment	string	O	1
	A free-form textual structure for general information or comments.			
parent(s)	<a href="#">FieldTicketLinItem</a>			

	<a href="#">FieldTicketSubLineItem</a>
--	--

### PostalCountry

The country code indicating the country to which mail should be delivered.

note				
level	<a href="#">FieldTicketProperties</a> <a href="#">FieldTicketDetails</a>			
children	Name CountryCode A code indicating a country. Use the codelist from ISO 3166-1:1997 Codes for the representation of names of countries and their subdivisions – Part 1: Country Codes.	Type string	Use M	Max 1
parent(s)	<a href="#">AddressInformation</a>			

### PriceBasis

A structure allowing for a price to be based on more than just a single unit of measure.

note				
level	<a href="#">FieldTicketDetails</a>			
children	Name Measurement A numeric value for technical or attribute data. <a href="#">MeasurementRange</a> A collection of elements providing a minimum and maximum measurement to create a range. UnitOfMeasureCode A code identifying the units in which measurement is expressed. Use values from the DE 355 code list contained in ASC X12 release 3030. BasisDescription Free-form textual description of the basis.	Type decimal  string string	Use O  M O	Max 1  1 1 1
parent(s)	<a href="#">Pricing</a>			

### Pricing

A collection of elements detailing price information.

note				
level	<a href="#">FieldTicketDetails</a>			
children	Name <a href="#">UnitPrice</a> The unit price of the product or service being sold. <a href="#">PriceBasis</a> A structure allowing for a price to be based on more than just a single unit of measure.	Type	Use M O	Max 1 U
parent(s)	<a href="#">FieldTicketLineItem</a> <a href="#">FieldTicketSubLineItem</a>			

### PrimaryCurrency

The currency code indicating the currency to be used for the transaction.

note				
level	<a href="#">FieldTicketProperties</a>			
children	Name CurrencyCode A code indicating the currency in which the monetary amount is specified. Use the codelist from ISO 4217:2001 Codes for the representation of currencies	Type string	Use M	Max 1

	and funds.
parent(s)	<a href="#">FieldTicketProperties</a>

### PurchaseOrderInformation

A collection of elements containing relevant purchase order information which needs to be referenced within other documentation and/or messages.

note																																																									
level	<a href="#">FieldTicketProperties</a> <a href="#">FieldTicketDetails</a>																																																								
children	<table border="1"> <thead> <tr> <th>Name</th> <th>Type</th> <th>Use</th> <th>Max</th> </tr> </thead> <tbody> <tr> <td>PurchaseOrderNumber A unique identifier for an Order Create message.</td> <td>string</td> <td>M</td> <td>1</td> </tr> <tr> <td>PurchaseOrderIssuedDate The date upon which an order was created or deemed to have been issued. Format is CCYY-MM-DD where "CC" represents the century, "YY" the year, "MM" the month and "DD" the day.</td> <td>date</td> <td>O</td> <td>1</td> </tr> <tr> <td>PurchaseOrderTypeCode A code indicating the kind of purchase order.</td> <td>string</td> <td>O</td> <td>1</td> </tr> <tr> <td>Confirmation</td> <td></td> <td></td> <td></td> </tr> <tr> <td>EmergencyOrder</td> <td></td> <td></td> <td></td> </tr> <tr> <td>ReleaseOrDeliveryOrder</td> <td></td> <td></td> <td></td> </tr> <tr> <td>RushOrder</td> <td></td> <td></td> <td></td> </tr> <tr> <td>StandAloneOrder</td> <td></td> <td></td> <td></td> </tr> <tr> <td>SupplyOrServiceOrder</td> <td></td> <td></td> <td></td> </tr> <tr> <td>Other</td> <td></td> <td></td> <td></td> </tr> <tr> <td>ReleaseNumber A number identifying a release against a purchase order previously placed by the parties involved in the transaction. It is the equivalent to a work order number.</td> <td>string</td> <td>O</td> <td>1</td> </tr> <tr> <td>SalesOrderNumber The identifier assigned by a supplier to an order placed by a customer.</td> <td>string</td> <td>O</td> <td>1</td> </tr> <tr> <td>RevisionNumber A number indicating the version of the document. It is used if a message is resent in its entirety to replace an earlier version.</td> <td>string</td> <td>O</td> <td>1</td> </tr> </tbody> </table>	Name	Type	Use	Max	PurchaseOrderNumber A unique identifier for an Order Create message.	string	M	1	PurchaseOrderIssuedDate The date upon which an order was created or deemed to have been issued. Format is CCYY-MM-DD where "CC" represents the century, "YY" the year, "MM" the month and "DD" the day.	date	O	1	PurchaseOrderTypeCode A code indicating the kind of purchase order.	string	O	1	Confirmation				EmergencyOrder				ReleaseOrDeliveryOrder				RushOrder				StandAloneOrder				SupplyOrServiceOrder				Other				ReleaseNumber A number identifying a release against a purchase order previously placed by the parties involved in the transaction. It is the equivalent to a work order number.	string	O	1	SalesOrderNumber The identifier assigned by a supplier to an order placed by a customer.	string	O	1	RevisionNumber A number indicating the version of the document. It is used if a message is resent in its entirety to replace an earlier version.	string	O	1
Name	Type	Use	Max																																																						
PurchaseOrderNumber A unique identifier for an Order Create message.	string	M	1																																																						
PurchaseOrderIssuedDate The date upon which an order was created or deemed to have been issued. Format is CCYY-MM-DD where "CC" represents the century, "YY" the year, "MM" the month and "DD" the day.	date	O	1																																																						
PurchaseOrderTypeCode A code indicating the kind of purchase order.	string	O	1																																																						
Confirmation																																																									
EmergencyOrder																																																									
ReleaseOrDeliveryOrder																																																									
RushOrder																																																									
StandAloneOrder																																																									
SupplyOrServiceOrder																																																									
Other																																																									
ReleaseNumber A number identifying a release against a purchase order previously placed by the parties involved in the transaction. It is the equivalent to a work order number.	string	O	1																																																						
SalesOrderNumber The identifier assigned by a supplier to an order placed by a customer.	string	O	1																																																						
RevisionNumber A number indicating the version of the document. It is used if a message is resent in its entirety to replace an earlier version.	string	O	1																																																						
parent(s)	<a href="#">FieldTicketLineItem</a> <a href="#">FieldTicketProperties</a> <a href="#">FieldTicketSubLineItem</a>																																																								

### ReferenceInformation

A collection of elements detailing references to information that reside outside of the current transaction message.

note	• It is recommended that ReferenceInformation be used at either the Property or Detail level, but not both.			
level	<a href="#">FieldTicketProperties</a> <a href="#">FieldTicketDetails</a>			
children	Name	Type	Use	Max
	ReferenceNumber A number or identifier that is used to reference documents or information not included within a particular message. The referenceInformationIndicator attribute qualifies what this number references Description A free-form textual explanation or clarification.	string	M	1
parent(s)	<a href="#">FieldTicketLineItem</a> <a href="#">FieldTicketProperties</a> <a href="#">FieldTicketSubLineItem</a>			
	attributes	Type	Use	Fixed
	referenceInformationIndicator A code to identify what type of information is being referenced.	string	M	
	AFENumber			
	BatchNumber			
	BillOfLading			
	Certification			
	CertifiedInspectionTestResults			
	ConfigurationNumber			
	ContractNumber			
	CostAllocationReference			
	CostCenter			
	CustomerAccountingReference			
	CustomerReferenceNumber			
	DeliveryTicketNumber			
	DivisionIdentifier			
	EngineeringChangeOrderNumber			
	JobNumber			
	LetterOfCreditNumber			
	LocationNumber			
	MaterialSafetyDataSheet			
	OperatorGeneralLedgerCode			
	OriginalInvoiceNumber			
	PriceAreaNumber			
	ProjectNumber			
	ProposalNumber			
	QuoteNumber			
	RequestForQuotationNumber			
	TemplateName			
	Other			

## SecondCurrency

The currency code indicating a second currency, such as for European countries using the Euro and a local currency.

note				
level	FieldTicketProperties			
children	Name CurrencyCode A code indicating the currency in which the monetary amount is specified. Use the codelist from ISO 4217:2001 Codes for the representation of currencies and funds.	Type string	Use M	Max 1
parent(s)	<a href="#">FieldTicketProperties</a>			

## ServiceDateTime

The actual and/or schedule dates for a service.

note	<p>Format is CCYY-MM-DDThh:mm:ss where "CC" represents the century, "YY" the year, "MM" the month and "DD" the day. The letter "T" is the date/time separator and "hh", "mm", "ss" represent hour, minute and second respectively.</p> <p>The CCYY field must have at least four digits, the MM, DD, SS, hh, mm and ss fields exactly two digits each. Leading zeroes must be used if the field would otherwise have too few digits.</p> <p>If no time is to be given then use zeroes in the hh, mm and ss fields.</p> <p>This representation may be immediately followed by a "Z" to indicate Coordinated Universal Time (UTC) or, to indicate the time zone, i.e. the difference between the local time and Coordinated Universal Time, immediately followed by a sign, + or -, followed by the difference from UTC represented as hh:mm (note: the minutes part is required). For example, to indicate 1:20 pm on May the 31st, 1999 for Eastern Standard Time which is 5 hours behind Coordinated Universal Time (UTC), one would write: 1999-05-31T13:20:00-05:00.</p>			
level	<a href="#">FieldTicketProperties</a> <a href="#">FieldTicketDetails</a>			
parent(s)	<a href="#">FieldTicketLineItem</a> <a href="#">FieldTicketProperties</a> <a href="#">FieldTicketSubLineItem</a>			
attributes	Name dateTypeIndicator A code to identify which date being given. ArriveLocationDate InvoiceDueDate InvoicePeriodStartDate LeaveLocationDate PromisedForDelivery PromisedForShipment RequestedForDelivery RequestedForShipment ServicePeriodEnd ServicePeriodStart ShipDate Other	Type string	Use M	Fixed

### ShippingAmount

The monetary amount of shipping or freight charges.

note				
level	<a href="#">FieldTicketDetails</a> <a href="#">FieldTicketSummary</a>			
children	Name	Type	Use	Max
	MonetaryAmount The currency value of a transaction or item.	decimal	M	1
children	CurrencyCode A code indicating the currency in which the monetary amount is specified. Use the codelist from ISO 4217:2001 Codes for the representation of currencies and funds.	string	O	1
	parent(s)	<a href="#">FieldTicketLineItem</a> <a href="#">FieldTicketSubLineItem</a> <a href="#">FieldTicketSummary</a>		

### SpecialInstructions

A free-form textual description of special requirements.

note				
level	<a href="#">FieldTicketProperties</a> <a href="#">FieldTicketDetails</a>			
parent(s)	<a href="#">FieldTicketLineItem</a> <a href="#">FieldTicketProperties</a> <a href="#">FieldTicketSubLineItem</a>			
attributes	Name	Type	Use	Fixed
	instructionIndicator A code to identify the type of instruction being given.	string	O	
	CarrierInstructions			
	ConsigneeInstructions			
	DriverInstructions			
	EmptyReturnInstructions			
	InspectionInstructions			
	RoutingInstructions			
	ShipperInstructions			
	ShortLeadTime			
	Tolerances			
	Other			



### SubTotalAmount

The monetary amount of the subtotal. It is qualified by the subTotalIndicator attribute which identifies what the subtotal is referencing.

note				
level	<a href="#">FieldTicketSummary</a>			
children	Name	Type	Use	Max
	MonetaryAmount The currency value of a transaction or item.	decimal	M	1
children	CurrencyCode A code indicating the currency in which the monetary amount is specified. Use the codelist from ISO 4217:2001 Codes for the representation of currencies and funds.	string	O	1
parent(s)	<a href="#">FieldTicketSummary</a>			
attributes	Name	Type	Use	Fixed
	subTotalIndicator A code to indicate the type of subtotal being given.	string	M	
	Equipment			
	Labor			
	Materials			
attributes	Other			



### TaxAmount

The monetary amount of the tax.

note				
level	<a href="#">FieldTicketDetails</a> <a href="#">FieldTicketSummary</a>			
children	Name	Type	Use	Max
	MonetaryAmount The currency value of a transaction or item.	decimal	M	1
children	CurrencyCode A code indicating the currency in which the monetary amount is specified. Use the codelist from ISO 4217:2001 Codes for the representation of currencies and funds.	string	O	1
	parent(s)	<a href="#">Tax</a>		

### TaxBasisAmount

The monetary amount which is subject to tax.

note				
level	<a href="#">FieldTicketDetails</a> <a href="#">FieldTicketSummary</a>			
children	Name	Type	Use	Max
	MonetaryAmount The currency value of a transaction or item.	decimal	M	1
children	CurrencyCode A code indicating the currency in which the monetary amount is specified. Use the codelist from ISO 4217:2001 Codes for the representation of currencies and funds.	string	O	1
	parent(s)	<a href="#">Tax</a>		

### TaxInformation

A collection of elements detailing tax information about a partner.

note				
level	<a href="#">FieldTicketProperties</a> <a href="#">FieldTicketDetails</a>			
children	Name	Type	Use	Max
	TaxIdentifierNumber A unique number or code issued to an organization by a governmental or regulatory body identifying that entity for tax purposes.	string	O	1
children	Jurisdiction The authority exercised by a nation, a judicial body, or a legislative body over persons, places, and property. Jurisdiction may apply to the territory over which a nation has control, including the land area, the adjacent sea, and the airspace above. It may also refer to the authority of an international body to make decisions binding on national entities.	string	O	1
	TaxCertificateType The category of tax certificate for which an identifying number is issued.	string	O	1
children	TaxCertificateNumber The identifying number for a tax certificate such as tax exemption, sales and use tax certificate or other such document.	string	O	1
	parent(s)	<a href="#">PartnerInformation</a>		

### TaxLocation

The physical or deemed location at which tax is calculated based upon jurisdiction by a governmental or regulatory body.

note				
------	--	--	--	--

level	<a href="#">FieldTicketDetails</a> <a href="#">FieldTicketSummary</a>			
children	Name LocationIdentifier A unique identifier for a physical location. LocationName The name of the location being referenced. LocationDescription Free-form textual description of the location. <a href="#">AddressInformation</a> A collection of elements defining the details of an address.	Type string string string	Use O O O O	Max 1 1 1 1
parent(s)	<a href="#">Tax</a>			

## Telephone

A collection of elements detailing information about a telephone number.

note				
level	<a href="#">FieldTicketProperties</a> <a href="#">FieldTicketDetails</a>			
children	Name PhoneNumber A numerical sequence to reach a telephone attached to a communication network. PhoneNumberExtension An extension number that is needed to further identify the phone number. TelecomCountryCode The dialing code from another country to access the telephone network in another country. TelecomAreaCode The area code within a country or jurisdiction, if needed, to access local telephones within the country.	Type string string string	Use M O O O	Max 1 1 1 1
parent(s)	<a href="#">ContactInformation</a>			
attributes	Name telephoneIndicator A code to indicate the type of phone number being given. Fax Mobile Pager Voice Other	Type string	Use O	Fixed

### TermsDiscountAmount

The total monetary amount of the payment terms discount.

note				
level	<a href="#">FieldTicketSummary</a>			
children	Name	Type	Use	Max
	MonetaryAmount The currency value of a transaction or item.	decimal	M	1
	CurrencyCode A code indicating the currency in which the monetary amount is specified. Use the codelist from ISO 4217:2001 Codes for the representation of currencies and funds.	string	O	1
parent(s)	<a href="#">FieldTicketSummary</a>			

### TimeWorked

The time period worked by a specific employee completing a service.

note				
level	<a href="#">FieldTicketDetails</a>			
children	Name	Type	Use	Max
	Quantity A numeric count of measure.	decimal	M	1
	UnitOfMeasureCode A code identifying the units in which measurement is expressed. Use values from the DE 355 code list contained in ASC X12 release 3030.	string	M	1
parent(s)	<a href="#">PersonnelInformation</a>			

## TransportInformation

A collection of elements detailing how product is transported.

note	• If TransportInformation is used, then at least one of TransportMethodCode, Routing, or ServiceLevelCode is required.			
level	<a href="#">FieldTicketProperties</a> <a href="#">FieldTicketDetails</a>			
children	Name	Type	Use	Max
	ShipmentMethodOfPayment A code indicating payment terms for transportation charges.	string	M	1
	Collect			
	Collect-FreightCreditedBackToCustomer			
	CustomerPickupBackhaul			
	Pickup			
	PrepaidBySeller			
	Prepaid-ChargedToCustomer			
	ServiceFreight-NoCharge			
	ThirdPartyPay			
	Other			
	RoutingSequenceCode A code indicating the relationship of a carrier to a specific shipment movement.	string	O	1
	OriginCarrier-AirMotorOcean			
	OriginDeliveryCarrier-AnyMode			
	Other			
	TransportMethodCode A code indicating the mode of transportation used to move product.	string	O	1
	Air			
	AirExpress			
	Barge			
	BestWay-ShippersOption			
	Boat			
	CustomerPickup			
	ExpeditedTruck			
	Motor-CommonCarrier			
	Ocean			
	ParcelPost			
	Rail			
	SupplierTruck			
	Truck			
	Vessel			
	Other			
	<a href="#">PartnerInformation</a> A collection of elements detailing partner information.		O	U
	<a href="#">Location</a> A collection of elements giving details about a location.		O	U
	ShipmentTermsCode A code indicating the terms under which a product is shipped, such as Freight Prepaid, FOB or similar.	string	O	1
	Routing A free-form description of the shipping route to be provided for transportation of product.	string	O	1
	ServiceLevelCode A code indicating the level of service required.	string	O	1
	<a href="#">HazardousMaterials</a> A collection of elements conveying hazardous goods information related to a product.		O	1
	CarrierEquipmentCode A code indicating the kind of equipment parent(s) the carrier.	string	O	1
	TransportName	string	O	1

	The identifier of specific vessel, truck, railcar, etc.			
parent(s)	<a href="#">FieldTicketLineItem</a> <a href="#">FieldTicketProperties</a> <a href="#">FieldTicketSubLineItem</a>			

### UnitPrice

A collection of elements detailing how product is transported.

note				
level	<a href="#">FieldTicketDetails</a>			
children	Name	Type	Use	Max
	MonetaryAmount	decimal	M	1
	The currency value of a transaction or item.			
	UnitOfMeasureCode	string	M	1
	A code identifying the units in which measurement is expressed. Use values from the DE 355 code list contained in ASC X12 release 3030.			
	CurrencyCode	string	O	1
	A code indicating the currency in which the monetary amount is specified. Use the codelist from ISO 4217:2001 Codes for the representation of currencies and funds.			
parent(s)	<a href="#">Pricing</a>			

### WellIdentifier

A unique identifier referencing a well, such as an PIDX or UWI number.

note				
level	<a href="#">FieldTicketProperties</a> <a href="#">FieldTicketDetails</a>			
parent(s)	<a href="#">WellInformation</a>			
attributes	Name	Type	Use	Fixed
	wellIdentifierIndicator	string	O	
	A code to indicate the origin of the Well Identifier.			
	PIDXNumber			
	CustomerNumber			
	UWINumber			
	Other			

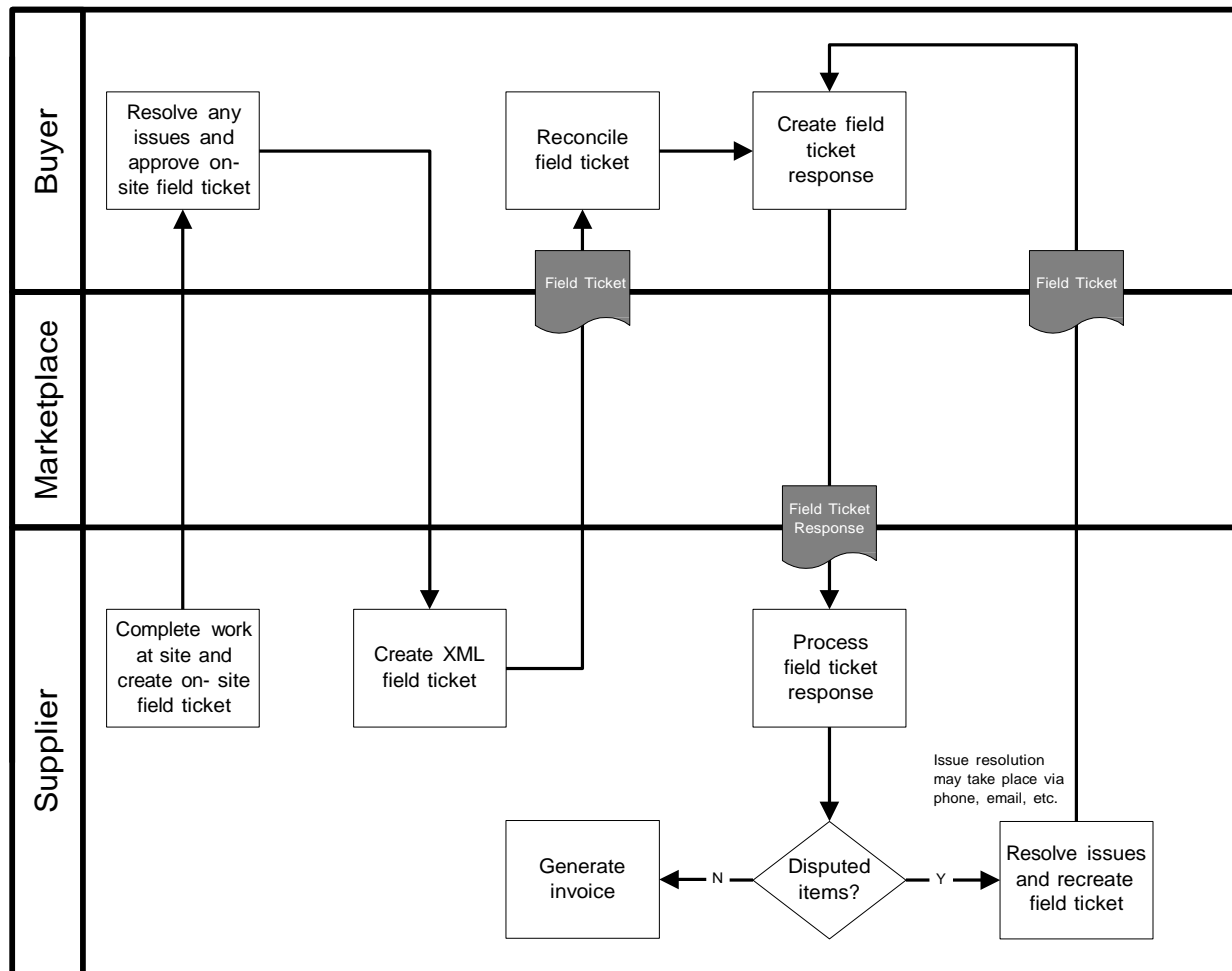




## 2.0 Field Ticket Response

### 2.1 Business Process Diagram

Below is the Business Process Diagram for the Field Ticket Response transaction. This is not the only method in which the process can take place, however, it represents a primary process. Third parties, including a Marketplace, may be involved if necessary.



**Process Model** - A Seller completes work at a customer site. An on-site field ticket is generated and given to the Buyer for approval. The Buyer approves the field ticket, indicating any changes that might be necessary on the field ticket. The seller uses the on-site field ticket information to create an XML field ticket and sends it to the Buyer. The Buyer processes the XML field ticket and sends a response accepting or disputing the field ticket information in whole or in part. Any disputes are handled by phone, email, etc. If necessary, once disputes are resolved, a corrected field ticket is generated and sent to the Buyer.

The Field Ticket Response document is used to accept or dispute the information provided by the XML Field Ticket, which is an electronic record of the work completed by the Seller at the Buyer's site.



## 2.2 Legend to Tables

The following tables detail the elements and attributes that make up the Field Ticket Response. The legend below provides guidance to understanding the element tables. The legend is an example only and is not part of the document standard data.

### Telephone <sup>1</sup>

A collection of elements detailing information about a telephone number. <sup>2</sup>

<sup>3</sup> note					
level	<a href="#">OrderCreateProperties</a> <sup>4</sup> <a href="#">OrderCreateDetails</a>				
children	<sup>5</sup> Name <sup>6</sup> <b>PhoneNumber</b> A numerical sequence to reach a telephone attached to a communication network. PhoneNumberExtension An extension number that is needed to further identify the phone number. TelecomCountryCode The dialing code from another country to access the telephone network in another country. TelecomAreaCode The area code within a country or jurisdiction, if needed, to access local telephones within the country.	<sup>7</sup> Type string <sup>6</sup> string string string	Use M O O O	Max 1 1 1 1	
parent(s)	<a href="#">ContactInformation</a> <sup>9</sup>				
attributes	<sup>10</sup> Name telephoneIndicator <sup>11</sup> <sup>14</sup> <sup>12</sup> A code to indicate the type of phone number being given. Fax Mobile Pager Voice Other	Type string <sup>13</sup>	Use O	Fixed	

Legend	
1	The name of the element.
2	The definition of the element.
3	Contains any business rules or comments about the element
4	Identifies whether or not the element is under the Property, Detail, or Summary level of the document
5	Contains the name of the child elements and their definitions. Those elements in blue are links to the element specification. Only those elements that contain children or attributes are hyperlinked.
6	Indicates the data type of the element.
7	Indicates whether the element is mandatory (M) or optional (O).
8	Indicates whether the element can have a maximum of one occurrence (1) or unbounded multiple occurrences (U)
9	Indicates the parent element of the element.
10	Contains the name of any attributes and their definitions.
11	Indicates the data type of the attribute. If the type is blank, then the element contains children rather than data.
12	Indicates whether the attribute is mandatory (M) or optional (O).
13	Provides a fixed value for the attribute.
14	The shaded areas provide either code list values, rules, or notes about the child element or attribute.

The document, its properties, details, line item, sub-line item, and summary elements are presented first. They are followed by an alphabetical listing of those elements used in the document and have children or attributes.

## 2.3 Document Detail

### FieldTicketResponse

The root element of the Field Ticket Response message. It is used to acknowledge a previously sent Field Ticket.

note				
children	Name	Type	Use	Max
	<a href="#">FieldTicketResponseProperties</a>		M	1
	A collection of elements defining the acknowledgement "meta-data" or "common data".			
	<a href="#">FieldTicketResponseDetails</a>		M	1
	A collection of elements defining the details of the Field Ticket Response message.			
	<a href="#">FieldTicketResponseSummary</a>		M	1
	A collection of elements detailing the totals of the acknowledgement.			
attributes	Name	Type	Use	Fixed
	transactionPurposeIndicator	string	M	
	A code indicating the purpose of the transaction.			
	Add			
	Cancellation			
	Change			
	Confirmation			
	Delete			
	Duplicate			
	Original			
	Replace			
	Request			
	Other			
version	decimal	M	1.0	
A fixed number indicating the version of the PIDX XML Standard on which the transaction is based.				

## FieldTicketResponseProperties

A collection of elements defining the response "meta-data" or "common data".

note		Type	Use	Max
children	Name			
	FieldTicketResponseNumber	string	M	1
	A unique identifier for a Field Ticket Response message.			
	FieldTicketResponseDate	date	M	1
	The date upon which an acknowledgement was created or deemed to have been issued.			
	Format is CCYY-MM-DD where "CC" represents the century, "YY" the year, "MM" the month and "DD" the day.			
	<a href="#">PartnerInformation</a>		M	U
	A collection of elements detailing partner information.			
	<a href="#">FieldTicketInformation</a>		M	1
	A collection of elements containing relevant field ticket information which needs to be referenced within other documentation and/or messages.			
	ApproverName	string	O	1
	The name of the person who approved the document.			
	ApprovalDate	date	O	1
	The date upon which the document was approved.			
	Format is CCYY-MM-DD where "CC" represents the century, "YY" the year, "MM" the month and "DD" the day.			
	<a href="#">CountryOfFinalDestination</a>		O	1
	The country where product is ultimately delivered or is deemed to have been delivered.			
	RevisionNumber	string	O	1
	A number indicating the version of the document. It is used if a message is resent in its entirety to replace an earlier version.			
	<a href="#">PurchaseOrderInformation</a>		O	1
A collection of elements containing relevant purchase order information which needs to be referenced within other documentation and/or messages.				
PurchaseOrderLineItemNumber	string	O	1	
A sequential individual line identifier within a purchase order document containing product or item information.				
<a href="#">PrimaryCurrency</a>		O	1	
The currency code indicating the currency to be used for the transaction.				
<a href="#">SecondCurrency</a>		O	1	
The currency code indicating a second currency, such as for European countries using the Euro and a local currency.				
<a href="#">ServiceDateTime</a>	datetime	O	U	
The actual and/or schedule dates for a service.				
LanguageCode	string	O	1	
A code indicating the language used for the transaction.				
Use the codelist from ISO 639-2:1998 Codes for the representation of names of languages – Part 2: Alpha-3 Code.				
<a href="#">JobLocationInformation</a>		O	1	
A collection of elements giving details of a job location.				
JobSummary	string	O	1	
A free-form textual summary of the job.				
<a href="#">CountryOfOrigin</a>		O	1	
The country where product originates or is deemed to have originated.				
<a href="#">TransportInformation</a>		O	1	
A collection of elements detailing how product is transported.				
<a href="#">PaymentTerms</a>		O	1	
A collection of elements detailing payment terms information.				
<a href="#">SpecialInstructions</a>	string	O	U	
A free-form textual description of special requirements.				

	<a href="#">ReferenceInformation</a> A collection of elements detailing references to information that reside outside of the current transaction message.		O	U
	<a href="#">Attachment</a> A collection of elements defining the details of an attachment to the document.		O	U
	Comment	string	O	1
	A free-form textual structure for general information or comments.			
parent(s)	<a href="#">FieldTicketResponse</a>			

### FieldTicketResponseDetails

A collection of elements defining the details of the Field Ticket Response message.

note				
children	Name <a href="#">FieldTicketResponseLineItem</a> A collection of elements defining the details of the line items making up the acknowledgement.	Type	Use M	Max U
parent(s)	<a href="#">FieldTicketResponse</a>			

### FieldTicketResponseLineItem

A collection of elements defining the details of the line items making up the acknowledgement.

note		Type	Use	Max	
children	Name				
	LineItemNumber	string	M	1	
	A sequential individual line identifier within a document containing service or item information.				
	LineStatusCode	string	M	1	
	A code which indicates the whether a line item has been approved, rejected, or is pending.				
	Accept				
	Pending				
	Reject				
	Other				
	LineResponseReasonCode	string	M	1	
	A code indicating the response to the line item, such as accepted, rejected, etc.				
	ChangeDescription	string	O	1	
	A free-form textual description of changes made.				
	<a href="#">LineItemInformation</a>			M	1
	A collection of elements detailing identifying information about a line item.				
	<a href="#">FieldTicketQuantity</a>			M	1
	The number of units of an item or service consumed.				
	<a href="#">CommodityCode</a>	string	O	U	
	A code indicating the categorization of a product or service in accordance with a particular standard.				
	PurchaseOrderLineItemNumber	string	O	1	
	A sequential individual line identifier within a purchase order document containing product or item information.				
	<a href="#">PurchaseOrderInformation</a>			O	1
	A collection of elements containing relevant purchase order information which needs to be referenced within other documentation and/or messages.				
	<a href="#">PersonnelInformation</a>			O	U
	A collection of elements detailing relevant personnel information.				
	<a href="#">PartnerInformation</a>			O	U
	A collection of elements detailing partner information.				
<a href="#">JobLocationInformation</a>			O	1	
A collection of elements giving details of a job location.					
<a href="#">Pricing</a>			O	1	
A collection of elements detailing price information.					
<a href="#">AllowanceOrCharge</a>			O	U	
A collection of elements defining the details of an allowance or charge to the customer.					
<a href="#">Tax</a>			O	U	
A collection of elements detailing information about tax applied to a transaction.					
<a href="#">ShippingAmount</a>			O	1	
The monetary amount of shipping or freight charges.					
<a href="#">LineItemTotal</a>			O	1	
The net total monetary amount for the line item.					
<a href="#">ServiceDateTime</a>	datetime	O	U		
The actual and/or schedule dates for a service.					
EquipmentIdentifier	string	O	U		
A unique identifier for a piece of equipment such as used for transportation of product.					
EquipmentDescription	string	O	U		
A free-form textual description of carrier equipment.					
<a href="#">CountryOfOrigin</a>			O	1	
The country where product originates or is deemed to have originated.					

	<a href="#">CountryOfFinalDestination</a>		O	1
	The country where product is ultimately delivered or is deemed to have been delivered.			
	<a href="#">TransportInformation</a>		O	1
	A code indicating the mode of transportation used to move product.			
	<a href="#">PaymentTerms</a>		O	1
	A collection of elements detailing payment terms information.			
	<a href="#">SpecialInstructions</a>	string	O	U
	A free-form textual description of special requirements.			
	PackagingCharacteristicCode	string	O	U
	A code indicating the marking, packaging, loading and related characteristics being described.			
	PackageSpecifications			
	ProductMarking			
	SkidPalletType			
	TypeOfPackage			
	Other			
	PackagingCharacteristicDescription	string	O	U
	Free-form text providing any additional information associated with the Packaging Characteristic Code.			
	<a href="#">ReferenceInformation</a>		O	U
	A collection of elements detailing references to information that reside outside of the current transaction message.			
	<a href="#">Attachment</a>		O	U
	A collection of elements defining the details of an attachment to the document.			
	Comment	string	O	1
	A free-form textual structure for general information or comments.			
	<a href="#">FieldTicketResponseSubLineItem</a>		O	U
	A collection of elements defining the details of the sub line items of an acknowledgement. It is used if a line item needs to be broken down into further detail.			
parent(s)	<a href="#">FieldTicketResponseDetails</a>			



### FieldTicketResponseSubLineItem

A collection of elements defining the details of the sub line items of an acknowledgement. It is used if a line item needs to be broken down into further detail.

note		Type	Use	Max	
children	Name				
	SubLineItemNumber	string	M	1	
	The sub-line item number relating to the primary line item referenced in the message.				
	LineStatusCode	string	M	1	
	A code which indicates the whether a line item has been approved, rejected, or is pending.				
	Accept				
	Pending				
	Reject				
	Other				
	LineResponseReasonCode	string	M	1	
	A code indicating the response to the line item, such as accepted, rejected, etc.				
	ChangeDescription	string	O	1	
	A free-form textual description of changes made.				
	<a href="#">LineItemInformation</a>			M	1
	A collection of elements detailing identifying information about a line item.				
	<a href="#">FieldTicketQuantity</a>			M	1
	The number of units of an item or service consumed.				
	<a href="#">CommodityCode</a>	string	O	U	
	A code indicating the categorization of a product or service in accordance with a particular standard.				
	PurchaseOrderSubLineItemNumber	string	O	1	
	A sequential individual sub-line identifier within an Order Create document containing product or item information that relates back to a parent line item.				
	<a href="#">PurchaseOrderInformation</a>			O	1
	A collection of elements containing relevant purchase order information which needs to be referenced within other documentation and/or messages.				
<a href="#">PersonnelInformation</a>			O	U	
A collection of elements detailing relevant personnel information.					
<a href="#">PartnerInformation</a>			O	U	
A collection of elements detailing partner information.					
<a href="#">JobLocationInformation</a>			O	1	
A collection of elements giving details of a job location.					
<a href="#">Pricing</a>			O	1	
A collection of elements detailing price information.					
<a href="#">AllowanceOrCharge</a>			O	U	
A collection of elements defining the details of an allowance or charge to the customer.					
<a href="#">Tax</a>			O	U	
A collection of elements detailing information about tax applied to a transaction.					
<a href="#">ShippingAmount</a>			O	1	
The monetary amount of shipping or freight charges.					
<a href="#">LineItemTotal</a>			O	1	
The net total monetary amount for the line item.					
<a href="#">ServiceDateTime</a>	datetime	O	U		
The actual and/or schedule dates for a service.					
EquipmentIdentifier	string	O	U		
A unique identifier for a piece of equipment such as used for transportation of product.					
EquipmentDescription	string	O	U		
A free-form textual description of carrier equipment.					
<a href="#">CountryOfOrigin</a>			O	1	

	The country where product originates or is deemed to have originated. <a href="#">CountryOfFinalDestination</a>		O	1
	The country where product is ultimately delivered or is deemed to have been delivered. <a href="#">TransportInformation</a>		O	1
	A code indicating the mode of transportation used to move product. <a href="#">PaymentTerms</a>		O	1
	A collection of elements detailing payment terms information. <a href="#">SpecialInstructions</a>	string	O	U
	A free-form textual description of special requirements. PackagingCharacteristicCode	string	O	U
	A code indicating the marking, packaging, loading and related characteristics being described. PackageSpecifications			
	ProductMarking			
	SkidPalletType			
	TypeOfPackage			
	Other			
	PackagingCharacteristicDescription	string	O	U
	Free-form text providing any additional information associated with the Packaging Characteristic Code. <a href="#">ReferenceInformation</a>		O	U
	A collection of elements detailing references to information that reside outside of the current transaction message. <a href="#">Attachment</a>		O	U
	A collection of elements defining the details of an attachment to the document. Comment	string	O	1
	A free-form textual structure for general information or comments.			
parent(s)	<a href="#">FieldTicketResponseLinItem</a>			

### FieldTicketResponseSummary

A collection of elements detailing the totals of the acknowledgement.

note		Type	Use	Max
children	Name			
	TotalLinItem	integer	M	1
	The total number of line items contained in a message. <a href="#">AllowanceOrCharge</a>		O	U
	A collection of elements defining the details of an allowance or charge to the customer. <a href="#">ShippingAmount</a>		O	U
	The monetary amount of shipping or freight charges. <a href="#">Tax</a>		O	U
	A collection of elements detailing information about tax applied to a transaction. <a href="#">SubTotalAmount</a>		O	U
	The monetary amount of the subtotal. It is qualified by the subTotalIndicator attribute which identifies what the subtotal is referencing. <a href="#">FieldTicketTotal</a>		O	1
	The total monetary amount of the field ticket. <a href="#">TermsDiscountAmount</a>		O	1
	The total monetary amount of the payment terms discount. <a href="#">DiscountedAmountDue</a>		O	1
	The monetary amount due if paid by terms discount due date (total invoice or installment amount less cash discount.)			
parent(s)	<a href="#">FieldTicketResponse</a>			

## AddressInformation

A collection of elements defining the details of an address.

note				
level	<a href="#">FieldTicketResponseProperties</a> <a href="#">FieldTicketResponseDetails</a>			
children	Name	Type	Use	Max
	POBoxNumber	string	O	1
	The identity of a physical box within a postal facility to accept and receive mail.			
	BuildingHouseNumber	string	O	1
	The alphanumeric identifier of a building as a part of an address.			
	StreetName	string	O	1
	The name of a street as part of an address.			
	AddressLine	string	O	U
	An occurrence of a generally accepted formatted line of data such that when combined with the entire address structure there is sufficient information for delivery or location purposes.			
	CityName	string	O	1
	The name of the city or municipality.			
	StateProvince	string	O	1
	The name of the municipality or town as a location for mailing, siting and other geographic functions.			
	PostalCode	string	O	1
	The code assigned by local postal authorities to delivery addresses.			
	<a href="#">PostalCountry</a>		O	1
	The country code indicating the country to which mail should be delivered.			
	CountyName	string	O	1
	The name of the county.			
	LocationIdentifier			
	A unique identifier for a physical location.			
parent(s)	<a href="#">JobLocationInformation</a> <a href="#">Location</a> <a href="#">PartnerInformation</a> <a href="#">TaxLocation</a>			



### AllowanceOrChargePercent

The allowance or charge expressed as a percentage.

note				
level	<a href="#">FieldTicketResponseDetails</a> <a href="#">FieldTicketResponseSummary</a>			
parent(s)	<a href="#">AllowanceOrCharge</a>			
attributes	Name	Type	Use	Fixed
	percentIndicator	string	O	
	A code indicating on what basis the allowance or charge percent is calculated.			

### AllowanceOrChargeQuantity

The quantity on which the allowance or charge is based if it is different from the purchase order or invoice quantity.

note				
level	<a href="#">FieldTicketResponseDetails</a> <a href="#">FieldTicketResponseSummary</a>			
children	Name	Type	Use	Max
	Quantity	decimal	M	1
	A numeric count of measure.			
	UnitOfMeasureCode	string	M	1
	A code identifying the units in which measurement is expressed. Use values from the DE 355 code list contained in ASC X12 release 3030.			
parent(s)	<a href="#">AllowanceOrCharge</a>			

### AllowanceOrChargeRate

The rate per unit of the allowance or charge.

note				
level	<a href="#">FieldTicketResponseDetails</a> <a href="#">FieldTicketResponseSummary</a>			
children	Name	Type	Use	Max
	MonetaryAmount	decimal	M	1
	The currency value of a transaction or item.			
	UnitOfMeasureCode	string	M	1
	A code identifying the units in which measurement is expressed. Use values from the DE 355 code list contained in ASC X12 release 3030.			
	CurrencyCode	string	O	1
	A code indicating the currency in which the monetary amount is specified. Use the codelist from ISO 4217:2001 Codes for the representation of currencies and funds.			
parent(s)	<a href="#">AllowanceOrCharge</a>			

### AllowanceOrChargeTotalAmount

The total monetary amount for the allowance or charge.

note				
level	<a href="#">FieldTicketResponseDetails</a> <a href="#">FieldTicketResponseSummary</a>			
children	Name	Type	Use	Max
	MonetaryAmount	decimal	M	1
	The currency value of a transaction or item.			
	CurrencyCode	string	O	1
	A code indicating the currency in which the monetary amount is specified. Use the codelist from ISO 4217:2001 Codes for the representation of currencies and funds.			

parent(s)	<a href="#">AllowanceOrCharge</a>
-----------	-----------------------------------

### AlternativeCommunicationMethod

Additional methods of communication, such as an IP Address or Printer ID, in addition to those specifically listed elsewhere in contact or address information.

note																																																									
level	<a href="#">FieldTicketResponseProperties</a> <a href="#">FieldTicketResponseDetails</a>																																																								
parent(s)	<a href="#">ContactInformation</a>																																																								
attributes	<table border="1"> <thead> <tr> <th>Name</th> <th>Type</th> <th>Use</th> <th>Fixed</th> </tr> </thead> <tbody> <tr> <td>alternativeCommunicationMethodIndicator</td> <td>string</td> <td>M</td> <td></td> </tr> <tr> <td colspan="4">A code to indicate the type of alternative communication method.</td> </tr> <tr> <td>AUTOVON</td> <td></td> <td></td> <td></td> </tr> <tr> <td>EDIAccessNumber</td> <td></td> <td></td> <td></td> </tr> <tr> <td>FederalTelecommunicationsSystem</td> <td></td> <td></td> <td></td> </tr> <tr> <td>IPAddress</td> <td></td> <td></td> <td></td> </tr> <tr> <td>PacketSwitching</td> <td></td> <td></td> <td></td> </tr> <tr> <td>PrinterID</td> <td></td> <td></td> <td></td> </tr> <tr> <td>StationCode</td> <td></td> <td></td> <td></td> </tr> <tr> <td>Telemail</td> <td></td> <td></td> <td></td> </tr> <tr> <td>Telex</td> <td></td> <td></td> <td></td> </tr> <tr> <td>TWX</td> <td></td> <td></td> <td></td> </tr> <tr> <td>Other</td> <td></td> <td></td> <td></td> </tr> </tbody> </table>	Name	Type	Use	Fixed	alternativeCommunicationMethodIndicator	string	M		A code to indicate the type of alternative communication method.				AUTOVON				EDIAccessNumber				FederalTelecommunicationsSystem				IPAddress				PacketSwitching				PrinterID				StationCode				Telemail				Telex				TWX				Other			
Name	Type	Use	Fixed																																																						
alternativeCommunicationMethodIndicator	string	M																																																							
A code to indicate the type of alternative communication method.																																																									
AUTOVON																																																									
EDIAccessNumber																																																									
FederalTelecommunicationsSystem																																																									
IPAddress																																																									
PacketSwitching																																																									
PrinterID																																																									
StationCode																																																									
Telemail																																																									
Telex																																																									
TWX																																																									
Other																																																									

### Attachment

A collection of elements defining the details of an attachment to the document.

note																																																													
level	<a href="#">FieldTicketResponseProperties</a> <a href="#">FieldTicketResponseDetails</a>																																																												
children	<table border="1"> <thead> <tr> <th>Name</th> <th>Type</th> <th>Use</th> <th>Max</th> </tr> </thead> <tbody> <tr> <td>AttachmentPurposeCode</td> <td>string</td> <td>O</td> <td>1</td> </tr> <tr> <td colspan="4">A code to indicate the purpose of the attachment.</td> </tr> <tr> <td>Template</td> <td></td> <td></td> <td></td> </tr> <tr> <td>Other</td> <td></td> <td></td> <td></td> </tr> <tr> <td>FileName</td> <td>string</td> <td>O</td> <td>1</td> </tr> <tr> <td colspan="4">The name of the file in an attachment.</td> </tr> <tr> <td>AttachmentTitle</td> <td>string</td> <td>O</td> <td>1</td> </tr> <tr> <td colspan="4">The title of the attachment.</td> </tr> <tr> <td>AttachmentDescription</td> <td>string</td> <td>O</td> <td>1</td> </tr> <tr> <td colspan="4">A free-form textual description of the attachment.</td> </tr> <tr> <td>FileType</td> <td>string</td> <td>O</td> <td>1</td> </tr> <tr> <td colspan="4">The type of the file in an attachment.</td> </tr> <tr> <td>AttachmentLocation</td> <td>string</td> <td>O</td> <td>1</td> </tr> <tr> <td colspan="4">The location of the attachment, such as a URL.</td> </tr> </tbody> </table>	Name	Type	Use	Max	AttachmentPurposeCode	string	O	1	A code to indicate the purpose of the attachment.				Template				Other				FileName	string	O	1	The name of the file in an attachment.				AttachmentTitle	string	O	1	The title of the attachment.				AttachmentDescription	string	O	1	A free-form textual description of the attachment.				FileType	string	O	1	The type of the file in an attachment.				AttachmentLocation	string	O	1	The location of the attachment, such as a URL.			
Name	Type	Use	Max																																																										
AttachmentPurposeCode	string	O	1																																																										
A code to indicate the purpose of the attachment.																																																													
Template																																																													
Other																																																													
FileName	string	O	1																																																										
The name of the file in an attachment.																																																													
AttachmentTitle	string	O	1																																																										
The title of the attachment.																																																													
AttachmentDescription	string	O	1																																																										
A free-form textual description of the attachment.																																																													
FileType	string	O	1																																																										
The type of the file in an attachment.																																																													
AttachmentLocation	string	O	1																																																										
The location of the attachment, such as a URL.																																																													
parent(s)	<a href="#">FieldTicketResponseLineItem</a> <a href="#">FieldTicketResponseProperties</a> <a href="#">FieldTicketResponseSubLineItem</a>																																																												

## Block

A collection of elements defining the details of a block, which identifies a location.

note				
level	<a href="#">FieldTicketResponseProperties</a> <a href="#">FieldTicketResponseDetails</a>			
children	Name BlockName The name of the block, which identifies a location. OCSGNumber The Outer Continental Shelf Gulf number. StateLease Lease on state land.	Type string  string  string	Use O  O  O	Max 1  1  1
parent(s)	<a href="#">GeographicalInformation</a>			

## CommodityCode

A code indicating the categorization of a product or service in accordance with a particular standard.

note				
level	<a href="#">FieldTicketResponseDetails</a>			
parent(s)	<a href="#">FieldTicketResponseLineItem</a> <a href="#">FieldTicketResponseSubLineItem</a>			
attributes	Name agencyIndicator A code indicating what agency or organization is responsible for defining the commodity code list.	Type string	Use O	Fixed

## ContactIdentifier

The identifier of the contact person or department.

note				
level	<a href="#">FieldTicketResponseProperties</a> <a href="#">FieldTicketResponseDetails</a>			
parent(s)	<a href="#">ContactInformation</a>			
attributes	Name contactIdentifierIndicator A code to identify the origin of the contact identifier. AssignedByBuyer AssignedBySeller EmployeeID Other	Type string	Use O	Fixed

## ContactInformation

A collection of elements defining details of communication for a contact person.

note	• It is recommended that ContactInformation be used at either the Property or Detail level, but not both.			
level	<a href="#">FieldTicketResponseProperties</a> <a href="#">FieldTicketResponseDetails</a>			
children	Name	Type	Use	Max
	<a href="#">ContactIdentifier</a>	string	O	1
	The identifier of the contact person or department.			
	ContactName	string	O	1
	The name of the contact person within the organization.			
	ContactDescription	string	O	1
	A free-form textual description of the contact.			
	<a href="#">Telephone</a>		O	U
	A collection of elements detailing information about a telephone number.			
	EmailAddress	string	O	1
	The address assigned to a person or organization to receive electronic messages.			
	<a href="#">AlternativeCommunicationMethod</a>	string	O	U
	Additional methods of communication, such as an IP Address or Printer ID, in addition to those specifically listed elsewhere in contact or address information.			
parent(s)	<a href="#">PartnerInformation</a>			
attributes	Name	Type	Use	Fixed
	contactInformationIndicator	string	M	
	A code indicating the function of the contact.			
	BuyerDepartment			
	DeliveryContact			
	DesignEngineer			
	Engineer			
	EnteredBy			
	FieldRepresentative			
	OfficeRepresentative			
	OrderContact			
	PurchasingAgent			
	QuotePreparer			
	QuoteRequestor			
	RFQContact			
	SalesRepresentative			
	ServiceCoordinator			
	TechnicalMarketingRepresentative			
	Other			

## CountryOfFinalDestination

The country where product is ultimately delivered or is deemed to have been delivered.

note				
level	<a href="#">FieldTicketResponseProperties</a> <a href="#">FieldTicketResponseDetails</a>			
children	Name	Type	Use	Max
	CountryCode	string	M	1
	A code indicating a country.			
	Use the codelist from ISO 3166-1:1997 Codes for the representation of names of countries and their subdivisions – Part 1: Country Codes.			
parent(s)	<a href="#">FieldTicketResponseLineItem</a> <a href="#">FieldTicketResponseProperties</a> <a href="#">FieldTicketResponseSubLineItem</a>			





## CountryOfOrigin

The country where product originates or is deemed to have originated.

note				
level	<a href="#">FieldTicketResponseProperties</a> <a href="#">FieldTicketResponseDetails</a>			
children	Name CountryCode A code indicating a country. Use the codelist from ISO 3166-1:1997 Codes for the representation of names of countries and their subdivisions – Part 1: Country Codes.	Type	Use	Max
		string	M	1
parent(s)	<a href="#">FieldTicketResponseLineItem</a> <a href="#">FieldTicketResponseProperties</a> <a href="#">FieldTicketResponseSubLineItem</a>			

## Deferred

The terms for a deferred payment in relation to a transaction.

note				
level	<a href="#">FieldTicketResponseProperties</a> <a href="#">FieldTicketResponseDetails</a>			
children	Name <a href="#">DeferredAmount</a> The monetary amount that is deferred for payment based upon terms in an invoice, contract or agreement. DeferredDueDate The date upon which a deferred payment is due. Format is CCYY-MM-DD where "CC" represents the century, "YY" the year, "MM" the month and "DD" the day. PercentDeferredPayable The amount due that is deferred for payment expressed as a percentage. Description A free-form textual explanation or clarification.	Type	Use	Max
			O	1
		date	O	1
		decimal	O	1
		string	O	1
parent(s)	<a href="#">PaymentTerms</a>			

## DeferredAmount

The monetary amount that is deferred for payment based upon terms in an invoice, contract or agreement.

note				
level	<a href="#">FieldTicketResponseProperties</a> <a href="#">FieldTicketResponseDetails</a>			
children	Name MonetaryAmount The currency value of a transaction or item. CurrencyCode A code indicating the currency in which the monetary amount is specified. Use the codelist from ISO 4217:2001 Codes for the representation of currencies and funds.	Type	Use	Max
		decimal	M	1
		string	O	1
parent(s)	<a href="#">Deferred</a>			

### DiscountAmount

The monetary amount of a discount based upon payment terms.

note				
level	<a href="#">FieldTicketResponseProperties</a> <a href="#">FieldTicketResponseDetails</a>			
children	Name	Type	Use	Max
	MonetaryAmount	decimal	M	1
	The currency value of a transaction or item.			
	CurrencyCode	string	O	1
	A code indicating the currency in which the monetary amount is specified.			
	Use the codelist from ISO 4217:2001 Codes for the representation of currencies and funds.			
parent(s)	<a href="#">Discounts</a>			

### DiscountedAmountDue

The monetary amount due if paid by terms discount due date (total invoice or installment amount less cash discount.)

note				
level	<a href="#">FieldTicketResponseSummary</a>			
children	Name	Type	Use	Max
	MonetaryAmount	decimal	M	1
	The currency value of a transaction or item.			
	CurrencyCode	string	O	1
	A code indicating the currency in which the monetary amount is specified.			
	Use the codelist from ISO 4217:2001 Codes for the representation of currencies and funds.			
parent(s)	<a href="#">FieldTicketResponseSummary</a>			

### Discounts

The monetary amount allowed or applied as a credit against a transaction or balance.

note				
level	<a href="#">FieldTicketResponseProperties</a> <a href="#">FieldTicketResponseDetails</a>			
children	Name	Type	Use	Max
	DaysDue	integer	O	1
	The number of days from the payment terms basis date before a discount expires.			
	DiscountsDueDate	date	O	1
	The date upon which a discount expires.			
	Format is CCYY-MM-DD where "CC" represents the century, "YY" the year, "MM" the month and "DD" the day.			
	PercentDiscount	decimal	O	1
	A discount to be applied to the transaction expressed as a percentage.			
	<a href="#">DiscountAmount</a>		O	1
	The monetary amount of a discount based upon payment terms.			
	Description	string	O	1
	A free-form textual explanation or clarification.			
parent(s)	<a href="#">PaymentTerms</a>			

### EffectiveDates

The period of time (or range) where the information is valid or guaranteed.

note				
level	<a href="#">FieldTicketResponseProperties</a> <a href="#">FieldTicketResponseDetails</a>			
children	Name	Type	Use	Max
	FromDate The date upon which a time period begins. Format is CCYY-MM-DD where "CC" represents the century, "YY" the year, "MM" the month and "DD" the day.	date	M	1
children	ToDate The date upon which a time period ends. Format is CCYY-MM-DD where "CC" represents the century, "YY" the year, "MM" the month and "DD" the day.	date	M	1
	parent(s)	<a href="#">TaxInformation</a>		

### FieldTicketInformation

A collection of elements containing relevant field ticket information which needs to be referenced within other documentation and/or messages.

note				
level	<a href="#">FieldTicketResponseProperties</a>			
children	Name	Type	Use	Max
	FieldTicketNumber A unique identifier for a Field Ticket.	string	M	1
children	FieldTicketDate The date upon which a field ticket was created or deemed to have been issued. Format is CCYY-MM-DD where "CC" represents the century, "YY" the year, "MM" the month and "DD" the day.	date	O	1
	RevisionNumber A number indicating the version of the document. It is used if a message is resent in its entirety to replace an earlier version.	string	O	1
parent(s)	<a href="#">FieldTicketResponseProperties</a>			

### FieldTicketQuantity

The number of units of an item or service consumed.

note				
level	<a href="#">FieldTicketResponseDetails</a>			
children	Name	Type	Use	Max
	Quantity A numeric count of measure.	decimal	M	1
children	UnitOfMeasureCode A code identifying the units in which measurement is expressed. Use values from the DE 355 code list contained in ASC X12 release 3030.	string	M	1
	parent(s)	<a href="#">FieldTicketResponseLineItem</a> <a href="#">FieldTicketResponseSubLineItem</a>		

### FieldTicketTotal

The total monetary amount of the field ticket.

note				
level	<a href="#">FieldTicketResponseSummary</a>			
children	Name	Type	Use	Max
	<a href="#">MonetaryAmount</a> The currency value of a transaction or item.	decimal	M	1
children	CurrencyCode	Type	Use	Max
	A code indicating the currency in which the monetary amount is specified. Use the codelist from ISO 4217:2001 Codes for the representation of currencies and funds.	string	O	1
parent(s)	<a href="#">FieldTicketResponseSummary</a>			

### GeographicalInformation

A collection of elements defining a geographical location.

note	• If any one of Section, Township, or Range is given then the other two are required.			
level	<a href="#">FieldTicketResponseProperties</a> <a href="#">FieldTicketResponseDetails</a>			
children	Name	Type	Use	Max
	FieldName	string	O	1
	The name of the oil field.			
	Section	string	O	1
	A part of Section/Township/Range location identifier scheme.			
	Township	string	O	1
	A part of Section/Township/Range location identifier scheme.			
Range	string	O	1	
A part of Section/Township/Range location identifier scheme.				
Region	string	O	1	
The name of a geographic region.				
<a href="#">Block</a>			O	1
A collection of elements defining the details of a block, which identifies a location.				
<a href="#">GPSCoordinates</a>			O	1
A collection of elements containing latitude and longitude data for a specific location.				
parent(s)	<a href="#">JobLocationInformation</a> <a href="#">Location</a>			

### GPSCoordinates

A collection of elements containing latitude and longitude data for a specific location.

note				
level	<a href="#">FieldTicketResponseProperties</a> <a href="#">FieldTicketResponseDetails</a>			
children	Name	Type	Use	Max
	Latitude	string	M	1
children	The specified latitude of a location.			
	Longitude	string	M	1
children	The specified longitude of a location.			
	parent(s)	<a href="#">GeographicalInformation</a>		

### HazardousMaterialClassCode

A code indicating the kind of hazard for a material.

note				
level	<a href="#">FieldTicketResponseProperties</a> <a href="#">FieldTicketResponseDetails</a>			
parent(s)	<a href="#">HazardousMaterials</a>			
attributes	Name	Type	Use	Fixed
	hazardousMaterialIndicator	string	M	
	A code which qualifies the Hazardous Material Class Code.			

### HazardousMaterials

A collection of elements conveying hazardous goods information related to a product.

note	• If HazardousMaterials is used, then at least one of SpecialHandlingCode or HazardousMaterialDescription is required.			
level	<a href="#">FieldTicketResponseProperties</a> <a href="#">FieldTicketResponseDetails</a>			
children	Name	Type	Use	Max
	SpecialHandlingCode	string	O	1
	A code identifying any special transportation handling instructions			
	HazardousMaterialDescription	string	O	1
	A free-form textual explanation of information related to a hazardous shipment.			
	<a href="#">HazardousMaterialClassCode</a>	string	O	U
	A code indicating the kind of hazard for a material.			
parent(s)	<a href="#">TransportInformation</a>			

### JobLocationIdentifier

A unique identifier referencing the job location.

note				
level	<a href="#">FieldTicketResponseProperties</a> <a href="#">FieldTicketResponseDetails</a>			
parent(s)	<a href="#">JobLocationInformation</a>			
attributes	Name	Type	Use	Fixed
	jobLocationIdentifierIndicator	string	O	
	A code to define what type of location the identifier is referencing.			
	ChemicalPlant			
	Coal-Degas			
	CogenerationPlant			
	Construction			
	Dock			
	GasPlant			
	IndustrialServiceMiscellaneous			
	MilitaryGovernment			
	PaperMill			
	PetroleumPlant			
	Pipeline			
	Refinery			
	Rig			
	UtilityPlant			
	Other			

### JobLocationInformation

A collection of elements giving details of a job location.

note				
level	<a href="#">FieldTicketResponseProperties</a> <a href="#">FieldTicketResponseDetails</a>			
children	Name	Type	Use	Max
	<a href="#">JobLocationIdentifier</a> A unique identifier referencing the job location.	string	O	U
	JobLocationClassCode A code indicating the class of the job location.	string	O	1
	FederalWaters			
	Land			
	InlandWaters			
	StateWaters			
	Other			
	JobLocationDescription A free-form textual description of the job location.	string	O	1
	JobLocationStatus A code indicating whether a location is active or inactive.	string	O	1
	Inactive			
	Active			
	Other			
	<a href="#">WellInformation</a> A collection of elements detailing information about a well.		O	1
	JobSiteCategory A code indicating the kind of site on which the job is located.	string	O	1
	Boiler			
	CivilHighways			
	Compression			
	Condenser			
	ConstructPiles			
	Dams			
	HeatExchanger			
	IndustrialServiceMiscellaneous			
	Piping			
	Production			
	TowerVessel			
	Turbine			
	UndergroundStr			
	Other			
	<a href="#">AddressInformation</a> A collection of elements defining the details of an address.		O	1
	<a href="#">GeographicalInformation</a> A collection of elements defining a geographical location.		O	1
parent(s)	<a href="#">FieldTicketResponseLineItem</a> <a href="#">FieldTicketResponseProperties</a> <a href="#">FieldTicketResponseSubLineItem</a>			

### LinItemIdentifier

The unique identifier for a product or service making up the line item.

note				
level	<a href="#">FieldTicketResponseDetails</a>			
parent(s)	<a href="#">LinItemInformation</a>			
attributes	Name	Type	Use	Fixed
	identifierIndicator	string	M	
	A code to indicate the origin of the identifier.			
	AssignedByBuyer			
	AssignedByManufacturer			
	AssignedBySeller			
	CatalogueNumber			
	UPCNumber			
	Other			

### LinItemInformation

A collection of elements detailing identifying information about a line item.

note				
level	<a href="#">FieldTicketResponseDetails</a>			
children	Name	Type	Use	Max
	<a href="#">LinItemIdentifier</a>	string	O	U
	The unique identifier for a product or service making up the line item.			
	LinItemName	string	O	1
	The name of the product or service in the line item.			
	LinItemDescription	string	O	1
	A free-form textual description of the line item.			
	ManufacturerIdentifier	string	O	1
	A unique identifier for a manufacturer.			
parent(s)	<a href="#">FieldTicketResponseLinItem</a> <a href="#">FieldTicketResponseSubLinItem</a>			

### LinItemTotal

The net total monetary amount for the line item.

note				
level	<a href="#">FieldTicketResponseDetails</a>			
children	Name	Type	Use	Max
	MonetaryAmount	decimal	M	1
	The currency value of a transaction or item.			
	CurrencyCode	string	O	1
	A code indicating the currency in which the monetary amount is specified.			
	Use the codelist from ISO 4217:2001 Codes for the representation of currencies and funds.			
parent(s)	<a href="#">FieldTicketResponseLinItem</a> <a href="#">FieldTicketResponseSubLinItem</a>			



## Location

A collection of elements giving details about a location.

note				
level	<a href="#">FieldTicketResponseProperties</a> <a href="#">FieldTicketResponseDetails</a>			
children	Name LocationIdentifier A unique identifier for a physical location. LocationName The name of the location being referenced. <a href="#">AddressInformation</a> A collection of elements defining the details of an address. <a href="#">GeographicalInformation</a> A collection of elements defining a geographical location. LocationDescription Free-form textual description of the location.	Type string  string    string	Use O  O  O  O	Max 1  1  1  1
parent(s)	<a href="#">TransportInformation</a>			
attributes	Name locationIndicator A code to identify what kind of location is being referenced. FreightEqualizationPoint OnVessel-FOBPoint AssignedBySeller Origin-AfterLoadingOnEquipment Origin-ShippingPoint Plant ShippingDestination Warehouse Other	Type string	Use O	Fixed 

## MeasurementRange

A collection of elements providing a minimum and maximum measurement to create a range.

note				
level	<a href="#">FieldTicketResponseProperties</a> <a href="#">FieldTicketResponseDetails</a>			
children	Name MinimumMeasurement The smallest measurement in a given range. MaximumMeasurement The largest measurement in a given range.	Type decimal  decimal	Use M  M	Max 1  1
parent(s)	<a href="#">PriceBasis</a>			

### PartnerIdentifier

A unique identifier indicating a particular partner or organization.

note				
level	<a href="#">FieldTicketResponseProperties</a> <a href="#">FieldTicketResponseDetails</a>			
parent(s)	<a href="#">PartnerInformation</a>			
attributes	Name	Type	Use	Fixed
	partnerIdentifierIndicator	string	M	
	A code to identify the origin of the Partner Identifier.			
	AssignedByBuyer			
	AssignedBySeller			
	DUNSNumber			
	DUNS+4Number			
	Other			

**PartnerInformation**

A collection of elements detailing partner information.

note				
level	<a href="#">FieldTicketResponseProperties</a> <a href="#">FieldTicketResponseDetails</a>			
children	Name <a href="#">PartnerIdentifier</a> A unique identifier indicating a particular partner or organization. PartnerName The name of the organization being referenced in Partner Information. <a href="#">AddressInformation</a> A collection of elements defining the details of an address. <a href="#">ContactInformation</a> A collection of elements defining details of communication for a contact person. <a href="#">TaxInformation</a> A collection of elements detailing tax information about a partner. URL A Uniform Resource Locator indicating an internet address.	Type string  string  string  string  string	Use M  O  O  O  O	Max U  1  1  U  1  1
parent(s)	<a href="#">FieldTicketResponseLineItem</a> <a href="#">FieldTicketResponseProperties</a> <a href="#">FieldTicketResponseSubLineItem</a> <a href="#">TransportInformation</a>			
attributes	Name partnerRoleIndicator A code to indicate the role in this transaction of the partner being referenced. BillAndShipTo BillTo Carrier CommissionPayee FinalRecipient Manufacturer Marketplace MaterialIssuer OnsiteContractingCompany OperatingCompany Payer PrimaryContractor RemitTo Seller ShipFromParty ShipToParty SoldTo ThirdParty Vendor Warehouse Other	Type string	Use M	Fixed

## PaymentTerms

A collection of elements detailing payment terms information.

note	<ul style="list-style-type: none"> <li>If either one of PercentDiscount or DiscountAmount is used, then at least one of DiscountsDueDate or DaysDue is required.</li> <li>If DeferredDueDate is used, then at least one of DeferredAmountDue or PercentOfInvoicePayable is required.</li> </ul>			
level	<a href="#">FieldTicketResponseProperties</a> <a href="#">FieldTicketResponseDetails</a>			
children	Name	Type	Use	Max
	PaymentTermsOfSale	string	O	1
	The terms on which payment is calculated for the transaction.			
	Description	string	O	1
	A free-form textual explanation or clarification.			
	PaymentTermsBasisDateCode	string	O	1
	A code identifying the beginning of the terms period.			
	DeliveryDate			
	InvoiceDate			
	InvoiceReceiptDate			
	Other			
	PaymentTermsBasisDate	date	O	1
	The date from which payment terms or discounts are calculated or based.			
	Format is CCYY-MM-DD where "CC" represents the century, "YY" the year, "MM" the month and "DD" the day.			
	TermsNetDays	integer	O	1
	The number of days until the total invoice amount is due (discount not applicable).			
	PercentOfInvoicePayable	decimal	O	1
	The amount of an invoice payable expressed as a percentage.			
	<a href="#">Discounts</a>		O	1
	The monetary amount allowed or applied as a credit against a transaction or balance.			
	<a href="#">Deferred</a>		O	1
	The terms for a deferred payment in relation to a transaction.			
	Penalty	string	O	1
	A percentage used to calculate the penalty on any balance unpaid by the due date.			
parent(s)	<a href="#">FieldTicketResponseLineItem</a> <a href="#">FieldTicketResponseProperties</a> <a href="#">FieldTicketResponseSubLineItem</a>			

## PersonnelInformation

A collection of elements detailing relevant personnel information.

note				
level	<a href="#">FieldTicketResponseDetails</a>			
children	Name	Type	Use	Max
	PersonnelName	string	O	1
	The name of the person being referenced.			
	CompanyName	string	O	1
	The name of the company.			
	PersonnelIdentifier	string	O	1
	A unique identifier for an employee of an organization.			
	<a href="#">TimeWorked</a>		O	1
	The time period worked by a specific employee completing a service.			
	JobDescription	string	O	1
	A free-form textual description of the job.			
	Comment	string	O	1
	A free-form textual structure for general information or comments.			
parent(s)	<a href="#">FieldTicketResponseLineItem</a>			

	<a href="#">FieldTicketResponseSubLinItem</a>
--	---

### PostalCountry

The country code indicating the country to which mail should be delivered.

note				
level	<a href="#">FieldTicketResponseProperties</a> <a href="#">FieldTicketResponseDetails</a>			
children	Name CountryCode A code indicating a country. Use the codelist from ISO 3166-1:1997 Codes for the representation of names of countries and their subdivisions – Part 1: Country Codes.	Type string	Use M	Max 1
parent(s)	<a href="#">AddressInformation</a>			

### PriceBasis

A structure allowing for a price to be based on more than just a single unit of measure.

note				
level	<a href="#">FieldTicketResponseDetails</a>			
children	Name Measurement A numeric value for technical or attribute data. <a href="#">MeasurementRange</a> A collection of elements providing a minimum and maximum measurement to create a range. UnitOfMeasureCode A code identifying the units in which measurement is expressed. Use values from the DE 355 code list contained in ASC X12 release 3030. BasisDescription Free-form textual description of the basis.	Type decimal  string	Use O M	Max 1 1 1
parent(s)	<a href="#">Pricing</a>			

### Pricing

A collection of elements detailing price information.

note				
level	<a href="#">FieldTicketResponseDetails</a>			
children	Name <a href="#">UnitPrice</a> The unit price of the product or service being sold. <a href="#">PriceBasis</a> A structure allowing for a price to be based on more than just a single unit of measure.	Type	Use M O	Max 1 U
parent(s)	<a href="#">FieldTicketResponseLinItem</a> <a href="#">FieldTicketResponseSubLinItem</a>			

### PrimaryCurrency

The currency code indicating the currency to be used for the transaction.

note				
level	<a href="#">FieldTicketResponseProperties</a>			
children	Name CurrencyCode A code indicating the currency in which the monetary amount is specified. Use the codelist from ISO 4217:2001 Codes for the representation of currencies	Type string	Use M	Max 1

	and funds.
parent(s)	<a href="#">FieldTicketResponseProperties</a>

### PurchaseOrderInformation

A collection of elements containing relevant purchase order information which needs to be referenced within other documentation and/or messages.

note																																																									
level	<a href="#">FieldTicketResponseProperties</a> <a href="#">FieldTicketResponseDetails</a>																																																								
children	<table border="1"> <thead> <tr> <th>Name</th> <th>Type</th> <th>Use</th> <th>Max</th> </tr> </thead> <tbody> <tr> <td>PurchaseOrderNumber A unique identifier for an Order Create message.</td> <td>string</td> <td>M</td> <td>1</td> </tr> <tr> <td>PurchaseOrderIssuedDate The date upon which an order was created or deemed to have been issued. Format is CCYY-MM-DD where "CC" represents the century, "YY" the year, "MM" the month and "DD" the day.</td> <td>date</td> <td>O</td> <td>1</td> </tr> <tr> <td>PurchaseOrderTypeCode A code indicating the kind of purchase order.</td> <td>string</td> <td>O</td> <td>1</td> </tr> <tr> <td>Confirmation</td> <td></td> <td></td> <td></td> </tr> <tr> <td>EmergencyOrder</td> <td></td> <td></td> <td></td> </tr> <tr> <td>ReleaseOrDeliveryOrder</td> <td></td> <td></td> <td></td> </tr> <tr> <td>RushOrder</td> <td></td> <td></td> <td></td> </tr> <tr> <td>StandAloneOrder</td> <td></td> <td></td> <td></td> </tr> <tr> <td>SupplyOrServiceOrder</td> <td></td> <td></td> <td></td> </tr> <tr> <td>Other</td> <td></td> <td></td> <td></td> </tr> <tr> <td>ReleaseNumber A number identifying a release against a purchase order previously placed by the parties involved in the transaction. It is the equivalent to a work order number.</td> <td>string</td> <td>O</td> <td>1</td> </tr> <tr> <td>SalesOrderNumber The identifier assigned by a supplier to an order placed by a customer.</td> <td>string</td> <td>O</td> <td>1</td> </tr> <tr> <td>RevisionNumber A number indicating the version of the document. It is used if a message is resent in its entirety to replace an earlier version.</td> <td>string</td> <td>O</td> <td>1</td> </tr> </tbody> </table>	Name	Type	Use	Max	PurchaseOrderNumber A unique identifier for an Order Create message.	string	M	1	PurchaseOrderIssuedDate The date upon which an order was created or deemed to have been issued. Format is CCYY-MM-DD where "CC" represents the century, "YY" the year, "MM" the month and "DD" the day.	date	O	1	PurchaseOrderTypeCode A code indicating the kind of purchase order.	string	O	1	Confirmation				EmergencyOrder				ReleaseOrDeliveryOrder				RushOrder				StandAloneOrder				SupplyOrServiceOrder				Other				ReleaseNumber A number identifying a release against a purchase order previously placed by the parties involved in the transaction. It is the equivalent to a work order number.	string	O	1	SalesOrderNumber The identifier assigned by a supplier to an order placed by a customer.	string	O	1	RevisionNumber A number indicating the version of the document. It is used if a message is resent in its entirety to replace an earlier version.	string	O	1
Name	Type	Use	Max																																																						
PurchaseOrderNumber A unique identifier for an Order Create message.	string	M	1																																																						
PurchaseOrderIssuedDate The date upon which an order was created or deemed to have been issued. Format is CCYY-MM-DD where "CC" represents the century, "YY" the year, "MM" the month and "DD" the day.	date	O	1																																																						
PurchaseOrderTypeCode A code indicating the kind of purchase order.	string	O	1																																																						
Confirmation																																																									
EmergencyOrder																																																									
ReleaseOrDeliveryOrder																																																									
RushOrder																																																									
StandAloneOrder																																																									
SupplyOrServiceOrder																																																									
Other																																																									
ReleaseNumber A number identifying a release against a purchase order previously placed by the parties involved in the transaction. It is the equivalent to a work order number.	string	O	1																																																						
SalesOrderNumber The identifier assigned by a supplier to an order placed by a customer.	string	O	1																																																						
RevisionNumber A number indicating the version of the document. It is used if a message is resent in its entirety to replace an earlier version.	string	O	1																																																						
parent(s)	<a href="#">FieldTicketResponseLineItem</a> <a href="#">FieldTicketResponseProperties</a> <a href="#">FieldTicketResponseSubLineItem</a>																																																								

### ReferenceInformation

A collection of elements detailing references to information that reside outside of the current transaction message.

note	• It is recommended that ReferenceInformation be used at either the Property or Detail level, but not both.			
level	<a href="#">FieldTicketResponseProperties</a> <a href="#">FieldTicketResponseDetails</a>			
children	Name	Type	Use	Max
	ReferenceNumber A number or identifier that is used to reference documents or information not included within a particular message. The referenceInformationIndicator attribute qualifies what this number references	string	M	1
	Description A free-form textual explanation or clarification.	string	O	1
parent(s)	<a href="#">FieldTicketResponseLineItem</a> <a href="#">FieldTicketResponseProperties</a> <a href="#">FieldTicketResponseSubLineItem</a>			
attributes	Name	Type	Use	Fixed
	referenceInformationIndicator A code to identify what type of information is being referenced.	string	M	
	AFENumber			
	BatchNumber			
	BillOfLading			
	Certification			
	CertifiedInspectionTestResults			
	ConfigurationNumber			
	ContractNumber			
	CostAllocationReference			
	CostCenter			
	CustomerAccountingReference			
	CustomerReferenceNumber			
	DeliveryTicketNumber			
	DivisionIdentifier			
	EngineeringChangeOrderNumber			
	JobNumber			
	LetterOfCreditNumber			
	LocationNumber			
	MaterialSafetyDataSheet			
	OperatorGeneralLedgerCode			
	OriginalInvoiceNumber			
	PriceAreaNumber			
	ProjectNumber			
	ProposalNumber			
	QuoteNumber			
	RequestForQuotationNumber			
	TemplateName			
	Other			

## SecondCurrency

The currency code indicating a second currency, such as for European countries using the Euro and a local currency.

note				
level	<a href="#">FieldTicketResponseProperties</a>			
children	Name CurrencyCode A code indicating the currency in which the monetary amount is specified. Use the codelist from ISO 4217:2001 Codes for the representation of currencies and funds.	Type string	Use M	Max 1
parent(s)	<a href="#">FieldTicketResponseProperties</a>			

## ServiceDateTime

The actual and/or schedule dates for a service.

note	<p>Format is CCYY-MM-DDThh:mm:ss where "CC" represents the century, "YY" the year, "MM" the month and "DD" the day. The letter "T" is the date/time separator and "hh", "mm", "ss" represent hour, minute and second respectively.</p> <p>The CCYY field must have at least four digits, the MM, DD, SS, hh, mm and ss fields exactly two digits each. Leading zeroes must be used if the field would otherwise have too few digits.</p> <p>If no time is to be given then use zeroes in the hh, mm and ss fields.</p> <p>This representation may be immediately followed by a "Z" to indicate Coordinated Universal Time (UTC) or, to indicate the time zone, i.e. the difference between the local time and Coordinated Universal Time, immediately followed by a sign, + or -, followed by the difference from UTC represented as hh:mm (note: the minutes part is required). For example, to indicate 1:20 pm on May the 31st, 1999 for Eastern Standard Time which is 5 hours behind Coordinated Universal Time (UTC), one would write: 1999-05-31T13:20:00-05:00.</p>			
level	<a href="#">FieldTicketResponseProperties</a> <a href="#">FieldTicketResponseDetails</a>			
parent(s)	<a href="#">FieldTicketResponseLineItem</a> <a href="#">FieldTicketResponseProperties</a> <a href="#">FieldTicketResponseSubLineItem</a>			
attributes	Name dateTypeIndicator A code to identify which date being given. ArriveLocationDate InvoiceDueDate InvoicePeriodStartDate LeaveLocationDate PromisedForDelivery PromisedForShipment RequestedForDelivery RequestedForShipment ServicePeriodEnd ServicePeriodStart ShipDate Other	Type string	Use M	Fixed



### ShippingAmount

The monetary amount of shipping or freight charges.

note				
level	<a href="#">FieldTicketResponseDetails</a> <a href="#">FieldTicketResponseSummary</a>			
children	Name MonetaryAmount The currency value of a transaction or item. CurrencyCode A code indicating the currency in which the monetary amount is specified. Use the codelist from ISO 4217:2001 Codes for the representation of currencies and funds.	Type decimal string	Use M O	Max 1 1
parent(s)	<a href="#">FieldTicketResponseLineItem</a> <a href="#">FieldTicketResponseSubLineItem</a> <a href="#">FieldTicketResponseSummary</a>			

### SpecialInstructions

A free-form textual description of special requirements.

note				
level	<a href="#">FieldTicketResponseProperties</a> <a href="#">FieldTicketResponseDetails</a>			
parent(s)	<a href="#">FieldTicketResponseLineItem</a> <a href="#">FieldTicketResponseProperties</a> <a href="#">FieldTicketResponseSubLineItem</a>			
attributes	Name instructionIndicator A code to identify the type of instruction being given. CarrierInstructions ConsigneeInstructions DriverInstructions EmptyReturnInstructions InspectionInstructions RoutingInstructions ShipperInstructions ShortLeadTime Tolerances Other	Type string	Use O	Fixed

### SubTotalAmount

The monetary amount of the subtotal. It is qualified by the subTotalIndicator attribute which identifies what the subtotal is referencing.

note				
level	<a href="#">FieldTicketResponseSummary</a>			
children	Name	Type	Use	Max
	MonetaryAmount The currency value of a transaction or item.	decimal	M	1
	CurrencyCode A code indicating the currency in which the monetary amount is specified. Use the codelist from ISO 4217:2001 Codes for the representation of currencies and funds.	string	O	1
parent(s)	<a href="#">FieldTicketResponseSummary</a>			
attributes	Name	Type	Use	Fixed
	subTotalIndicator A code to indicate the type of subtotal being given.	string	M	
	Equipment			
	Labor			
	Materials			
	Other			

**Tax**

A collection of elements detailing information about tax applied to a transaction.

note	<ul style="list-style-type: none"> <li>It is recommended that Tax be used at the Detail level to support tax exemptions. However, many systems cannot provide detail-level Tax information at this time, therefore, Tax is not mandatory at the detail level.</li> </ul>			
level	<a href="#">FieldTicketResponseDetails</a> <a href="#">FieldTicketResponseSummary</a>			
children	Name TaxTypeCode A code indicating the kind of tax being applied. CitySalesTax CountyParishSalesTax CountyTax FederalExciseTax GoodsAndServicesTax GrossReceiptsTax LocalTax MetropolitanTransitTax StateAndLocalSalesTax StateProvincialTax StateSalesTax ValueAddedTax WellServiceTax Other MixedRateIndicator A mixed rate VAT tax indicator. This is used for European tax purposes. TaxIdentifierNumber A unique number or code issued to an organization by a governmental or regulatory body identifying that entity for tax purposes. TaxExemptCode A code identifying exemption status from sales and use tax. DirectPay Exempt NonExempt Other <a href="#">TaxLocation</a> The physical or deemed location at which tax is calculated based upon jurisdiction by a governmental or regulatory body. TaxRate The percentage or monetary amount charged on a transaction. <a href="#">TaxBasisAmount</a> The monetary amount which is subject to tax. <a href="#">TaxAmount</a> The monetary amount of the tax. TaxReference A free-form textual explanation or clarification.	Type	Use	Max
		string	M	1
		string	O	1
		string	O	1
		string	O	1
		string	O	1
		string	O	1
		string	O	1
		string	O	1
		string	O	1
		decimal	O	1
		decimal	O	1
		decimal	O	1
		decimal	O	1
		decimal	O	1
		string	O	1
parent(s)	<a href="#">FieldTicketResponseLineItem</a> <a href="#">FieldTicketResponseSubLineItem</a> <a href="#">FieldTicketResponseSummary</a>			

### TaxAmount

The monetary amount of the tax.

note				
level	<a href="#">FieldTicketResponseDetails</a> <a href="#">FieldTicketResponseSummary</a>			
children	Name	Type	Use	Max
	MonetaryAmount	decimal	M	1
	The currency value of a transaction or item.			
	CurrencyCode	string	O	1
	A code indicating the currency in which the monetary amount is specified.			
	Use the codelist from ISO 4217:2001 Codes for the representation of currencies and funds.			
parent(s)	<a href="#">Tax</a>			

### TaxBasisAmount

The monetary amount which is subject to tax.

note				
level	<a href="#">FieldTicketResponseDetails</a> <a href="#">FieldTicketResponseSummary</a>			
children	Name	Type	Use	Max
	MonetaryAmount	decimal	M	1
	The currency value of a transaction or item.			
	CurrencyCode	string	O	1
	A code indicating the currency in which the monetary amount is specified.			
	Use the codelist from ISO 4217:2001 Codes for the representation of currencies and funds.			
parent(s)	<a href="#">Tax</a>			

### TaxInformation

A collection of elements detailing tax information about a partner.

note				
level	<a href="#">FieldTicketResponseProperties</a> <a href="#">FieldTicketResponseDetails</a>			
children	Name	Type	Use	Max
	TaxIdentifierNumber	string	O	1
	A unique number or code issued to an organization by a governmental or regulatory body identifying that entity for tax purposes.			
	Jurisdiction	string	O	1
	The authority exercised by a nation, a judicial body, or a legislative body over persons, places, and property. Jurisdiction may apply to the territory over which a nation has control, including the land area, the adjacent sea, and the airspace above. It may also refer to the authority of an international body to make decisions binding on national entities.			
	TaxCertificateType	string	O	1
	The category of tax certificate for which an identifying number is issued.			
	TaxCertificateNumber	string	O	1
	The identifying number for a tax certificate such as tax exemption, sales and use tax certificate or other such document.			
parent(s)	<a href="#">PartnerInformation</a>			

### TaxLocation

The physical or deemed location at which tax is calculated based upon jurisdiction by a governmental or regulatory body.

note				
------	--	--	--	--

level	<a href="#">FieldTicketResponseDetails</a> <a href="#">FieldTicketResponseSummary</a>			
children	Name	Type	Use	Max
	LocationIdentifier A unique identifier for a physical location.	string	O	1
	LocationName The name of the location being referenced.	string	O	1
	LocationDescription Free-form textual description of the location.	string	O	1
	<a href="#">AddressInformation</a> A collection of elements defining the details of an address.		O	1
parent(s)	<a href="#">Tax</a>			

## Telephone

A collection of elements detailing information about a telephone number.

note				
level	<a href="#">FieldTicketResponseProperties</a> <a href="#">FieldTicketResponseDetails</a>			
children	Name	Type	Use	Max
	PhoneNumber A numerical sequence to reach a telephone attached to a communication network.	string	M	1
	PhoneNumberExtension An extension number that is needed to further identify the phone number.	string	O	1
	TelecomCountryCode The dialing code from another country to access the telephone network in another country.	string	O	1
	TelecomAreaCode The area code within a country or jurisdiction, if needed, to access local telephones within the country.	string	O	1
parent(s)	<a href="#">ContactInformation</a>			
attributes	Name	Type	Use	Fixed
	telephoneIndicator A code to indicate the type of phone number being given.	string	O	
	Fax			
	Mobile			
	Pager			
	Voice			
	Other			

## TermsDiscountAmount

The total monetary amount of the payment terms discount.

note				
level	<a href="#">FieldTicketResponseSummary</a>			
children	Name	Type	Use	Max
	MonetaryAmount The currency value of a transaction or item.	decimal	M	1
	CurrencyCode A code indicating the currency in which the monetary amount is specified. Use the codelist from ISO 4217:2001 Codes for the representation of currencies and funds.	string	O	1
parent(s)	<a href="#">FieldTicketResponseSummary</a>			

**TimeWorked**

The time period worked by a specific employee completing a service.

note				
level	<a href="#">FieldTicketResponseDetails</a>			
children	Name	Type	Use	Max
	Quantity A numeric count of measure.	decimal	M	1
children	UnitOfMeasureCode A code identifying the units in which measurement is expressed. Use values from the DE 355 code list contained in ASC X12 release 3030.	string	M	1
parent(s)	<a href="#">PersonnelInformation</a>			

## TransportInformation

A collection of elements detailing how product is transported.

note	• If TransportInformation is used, then at least one of TransportMethodCode, Routing, or ServiceLevelCode is required.			
level	<a href="#">FieldTicketResponseProperties</a> <a href="#">FieldTicketResponseDetails</a>			
children	Name	Type	Use	Max
	ShipmentMethodOfPayment A code indicating payment terms for transportation charges. Collect Collect-FreightCreditedBackToCustomer CustomerPickupBackhaul Pickup PrepaidBySeller Prepaid-ChargedToCustomer ServiceFreight-NoCharge ThirdPartyPay Other	string	M	1
	RoutingSequenceCode A code indicating the relationship of a carrier to a specific shipment movement. OriginCarrier-AirMotorOcean OriginDeliveryCarrier-AnyMode Other	string	O	1
	TransportMethodCode A code indicating the mode of transportation used to move product. Air AirExpress Barge BestWay-ShippersOption Boat CustomerPickup ExpeditedTruck Motor-CommonCarrier Ocean ParcelPost Rail SupplierTruck Truck Vessel Other	string	O	1
	<a href="#">PartnerInformation</a> A collection of elements detailing partner information.		O	U
	<a href="#">Location</a> A collection of elements giving details about a location.		O	U
	ShipmentTermsCode A code indicating the terms under which a product is shipped, such as Freight Prepaid, FOB or similar.	string	O	1
	Routing A free-form description of the shipping route to be provided for transportation of product.	string	O	1
	ServiceLevelCode A code indicating the level of service required.	string	O	1
	<a href="#">HazardousMaterials</a> A collection of elements conveying hazardous goods information related to a product.		O	1
	CarrierEquipmentCode A code indicating the kind of equipment parent(s) the carrier.	string	O	1
	TransportName	string	O	1

	The identifier of specific vessel, truck, railcar, etc.
parent(s)	<a href="#">FieldTicketResponseLineItem</a> <a href="#">FieldTicketResponseProperties</a> <a href="#">FieldTicketResponseSubLineItem</a>

### UnitPrice

A collection of elements detailing how product is transported.

note																	
level	<a href="#">FieldTicketResponseDetails</a>																
children	<table border="1"> <thead> <tr> <th>Name</th> <th>Type</th> <th>Use</th> <th>Max</th> </tr> </thead> <tbody> <tr> <td>MonetaryAmount The currency value of a transaction or item.</td> <td>decimal</td> <td>M</td> <td>1</td> </tr> <tr> <td>UnitOfMeasureCode A code identifying the units in which measurement is expressed. Use values from the DE 355 code list contained in ASC X12 release 3030.</td> <td>string</td> <td>M</td> <td>1</td> </tr> <tr> <td>CurrencyCode A code indicating the currency in which the monetary amount is specified. Use the codelist from ISO 4217:2001 Codes for the representation of currencies and funds.</td> <td>string</td> <td>O</td> <td>1</td> </tr> </tbody> </table>	Name	Type	Use	Max	MonetaryAmount The currency value of a transaction or item.	decimal	M	1	UnitOfMeasureCode A code identifying the units in which measurement is expressed. Use values from the DE 355 code list contained in ASC X12 release 3030.	string	M	1	CurrencyCode A code indicating the currency in which the monetary amount is specified. Use the codelist from ISO 4217:2001 Codes for the representation of currencies and funds.	string	O	1
Name	Type	Use	Max														
MonetaryAmount The currency value of a transaction or item.	decimal	M	1														
UnitOfMeasureCode A code identifying the units in which measurement is expressed. Use values from the DE 355 code list contained in ASC X12 release 3030.	string	M	1														
CurrencyCode A code indicating the currency in which the monetary amount is specified. Use the codelist from ISO 4217:2001 Codes for the representation of currencies and funds.	string	O	1														
parent(s)	<a href="#">Pricing</a>																

### WellIdentifier

A unique identifier referencing a well, such as an PIDX or UWI number.

note																									
level	<a href="#">FieldTicketResponseProperties</a> <a href="#">FieldTicketResponseDetails</a>																								
parent(s)	<a href="#">WellInformation</a>																								
attributes	<table border="1"> <thead> <tr> <th>Name</th> <th>Type</th> <th>Use</th> <th>Fixed</th> </tr> </thead> <tbody> <tr> <td>wellIdentifierIndicator A code to indicate the origin of the Well Identifier.</td> <td>string</td> <td>O</td> <td></td> </tr> <tr> <td>PIDXNumber</td> <td></td> <td></td> <td></td> </tr> <tr> <td>CustomerNumber</td> <td></td> <td></td> <td></td> </tr> <tr> <td>UWIDNumber</td> <td></td> <td></td> <td></td> </tr> <tr> <td>Other</td> <td></td> <td></td> <td></td> </tr> </tbody> </table>	Name	Type	Use	Fixed	wellIdentifierIndicator A code to indicate the origin of the Well Identifier.	string	O		PIDXNumber				CustomerNumber				UWIDNumber				Other			
Name	Type	Use	Fixed																						
wellIdentifierIndicator A code to indicate the origin of the Well Identifier.	string	O																							
PIDXNumber																									
CustomerNumber																									
UWIDNumber																									
Other																									



## WellInformation

A collection of elements detailing information about a well.

note																																																																																																																																																																					
level	<a href="#">FieldTicketResponseProperties</a> <a href="#">FieldTicketResponseDetails</a>																																																																																																																																																																				
children	<table> <thead> <tr> <th>Name</th> <th>Type</th> <th>Use</th> <th>Max</th> </tr> </thead> <tbody> <tr> <td><a href="#">WellIdentifier</a></td> <td>string</td> <td>M</td> <td>U</td> </tr> <tr> <td>A unique identifier referencing a well, such as an PIDX or UWI number.</td> <td></td> <td></td> <td></td> </tr> <tr> <td>WellName</td> <td>string</td> <td>O</td> <td>1</td> </tr> <tr> <td>The customer name of a well.</td> <td></td> <td></td> <td></td> </tr> <tr> <td>WellType</td> <td>string</td> <td>O</td> <td>1</td> </tr> <tr> <td>A code indicating the function of the well.</td> <td></td> <td></td> <td></td> </tr> <tr><td>Brine</td><td></td><td></td><td></td></tr> <tr><td>DirectionalGas</td><td></td><td></td><td></td></tr> <tr><td>DirectionalNonWell</td><td></td><td></td><td></td></tr> <tr><td>DirectionalOil</td><td></td><td></td><td></td></tr> <tr><td>DisposalWell</td><td></td><td></td><td></td></tr> <tr><td>Environmental</td><td></td><td></td><td></td></tr> <tr><td>Gas</td><td></td><td></td><td></td></tr> <tr><td>HorizontalGas</td><td></td><td></td><td></td></tr> <tr><td>HorizontalOil</td><td></td><td></td><td></td></tr> <tr><td>IndustrialDisposal</td><td></td><td></td><td></td></tr> <tr><td>IndustrialNonWell</td><td></td><td></td><td></td></tr> <tr><td>Injection</td><td></td><td></td><td></td></tr> <tr><td>NonWell</td><td></td><td></td><td></td></tr> <tr><td>Oil</td><td></td><td></td><td></td></tr> <tr><td>Relief</td><td></td><td></td><td></td></tr> <tr><td>Storage</td><td></td><td></td><td></td></tr> <tr><td>Sulfur</td><td></td><td></td><td></td></tr> <tr><td>Thermal</td><td></td><td></td><td></td></tr> <tr><td>Uranium</td><td></td><td></td><td></td></tr> <tr><td>Water</td><td></td><td></td><td></td></tr> <tr><td>Other</td><td></td><td></td><td></td></tr> <tr> <td>WellCategory</td> <td>string</td> <td>O</td> <td>1</td> </tr> <tr> <td>A code indicating the category of a well.</td> <td></td> <td></td> <td></td> </tr> <tr><td>Abandoned</td><td></td><td></td><td></td></tr> <tr><td>DevBelow3000</td><td></td><td></td><td></td></tr> <tr><td>Development</td><td></td><td></td><td></td></tr> <tr><td>ExistingWell</td><td></td><td></td><td></td></tr> <tr><td>NonWell</td><td></td><td></td><td></td></tr> <tr><td>ReacidizeWell</td><td></td><td></td><td></td></tr> <tr><td>Recompletion</td><td></td><td></td><td></td></tr> <tr><td>RefractedWell</td><td></td><td></td><td></td></tr> <tr><td>Wildcat</td><td></td><td></td><td></td></tr> <tr><td>Workover</td><td></td><td></td><td></td></tr> <tr><td>Other</td><td></td><td></td><td></td></tr> </tbody> </table>	Name	Type	Use	Max	<a href="#">WellIdentifier</a>	string	M	U	A unique identifier referencing a well, such as an PIDX or UWI number.				WellName	string	O	1	The customer name of a well.				WellType	string	O	1	A code indicating the function of the well.				Brine				DirectionalGas				DirectionalNonWell				DirectionalOil				DisposalWell				Environmental				Gas				HorizontalGas				HorizontalOil				IndustrialDisposal				IndustrialNonWell				Injection				NonWell				Oil				Relief				Storage				Sulfur				Thermal				Uranium				Water				Other				WellCategory	string	O	1	A code indicating the category of a well.				Abandoned				DevBelow3000				Development				ExistingWell				NonWell				ReacidizeWell				Recompletion				RefractedWell				Wildcat				Workover				Other			
Name	Type	Use	Max																																																																																																																																																																		
<a href="#">WellIdentifier</a>	string	M	U																																																																																																																																																																		
A unique identifier referencing a well, such as an PIDX or UWI number.																																																																																																																																																																					
WellName	string	O	1																																																																																																																																																																		
The customer name of a well.																																																																																																																																																																					
WellType	string	O	1																																																																																																																																																																		
A code indicating the function of the well.																																																																																																																																																																					
Brine																																																																																																																																																																					
DirectionalGas																																																																																																																																																																					
DirectionalNonWell																																																																																																																																																																					
DirectionalOil																																																																																																																																																																					
DisposalWell																																																																																																																																																																					
Environmental																																																																																																																																																																					
Gas																																																																																																																																																																					
HorizontalGas																																																																																																																																																																					
HorizontalOil																																																																																																																																																																					
IndustrialDisposal																																																																																																																																																																					
IndustrialNonWell																																																																																																																																																																					
Injection																																																																																																																																																																					
NonWell																																																																																																																																																																					
Oil																																																																																																																																																																					
Relief																																																																																																																																																																					
Storage																																																																																																																																																																					
Sulfur																																																																																																																																																																					
Thermal																																																																																																																																																																					
Uranium																																																																																																																																																																					
Water																																																																																																																																																																					
Other																																																																																																																																																																					
WellCategory	string	O	1																																																																																																																																																																		
A code indicating the category of a well.																																																																																																																																																																					
Abandoned																																																																																																																																																																					
DevBelow3000																																																																																																																																																																					
Development																																																																																																																																																																					
ExistingWell																																																																																																																																																																					
NonWell																																																																																																																																																																					
ReacidizeWell																																																																																																																																																																					
Recompletion																																																																																																																																																																					
RefractedWell																																																																																																																																																																					
Wildcat																																																																																																																																																																					
Workover																																																																																																																																																																					
Other																																																																																																																																																																					
parent(s)	<a href="#">JobLocationInformation</a>																																																																																																																																																																				