

# JOURNEY TO NET ZERO – SCOPE 3 POC

---



JAMES THOMPSON  
**CONOCOPHILLIPS**, SR. IT PROCESS CONSULTANT



DAVID SHACKLETON  
**SCHLUMBERGER**, INDEPENDENT DATA SERVICES BDM

# JOURNEY TO NET ZERO – SCOPE 3 POC

---

- INTRODUCTION
- EMISSIONS DATA CAPTURE/REPORTING OVERVIEW
- PROJECT OVERVIEW
- STATUS OF EFFORT
- APPROACH
- CHALLENGES/LEARNING
- PATH FORWARD

---

---

**QUESTIONS?**

---

---

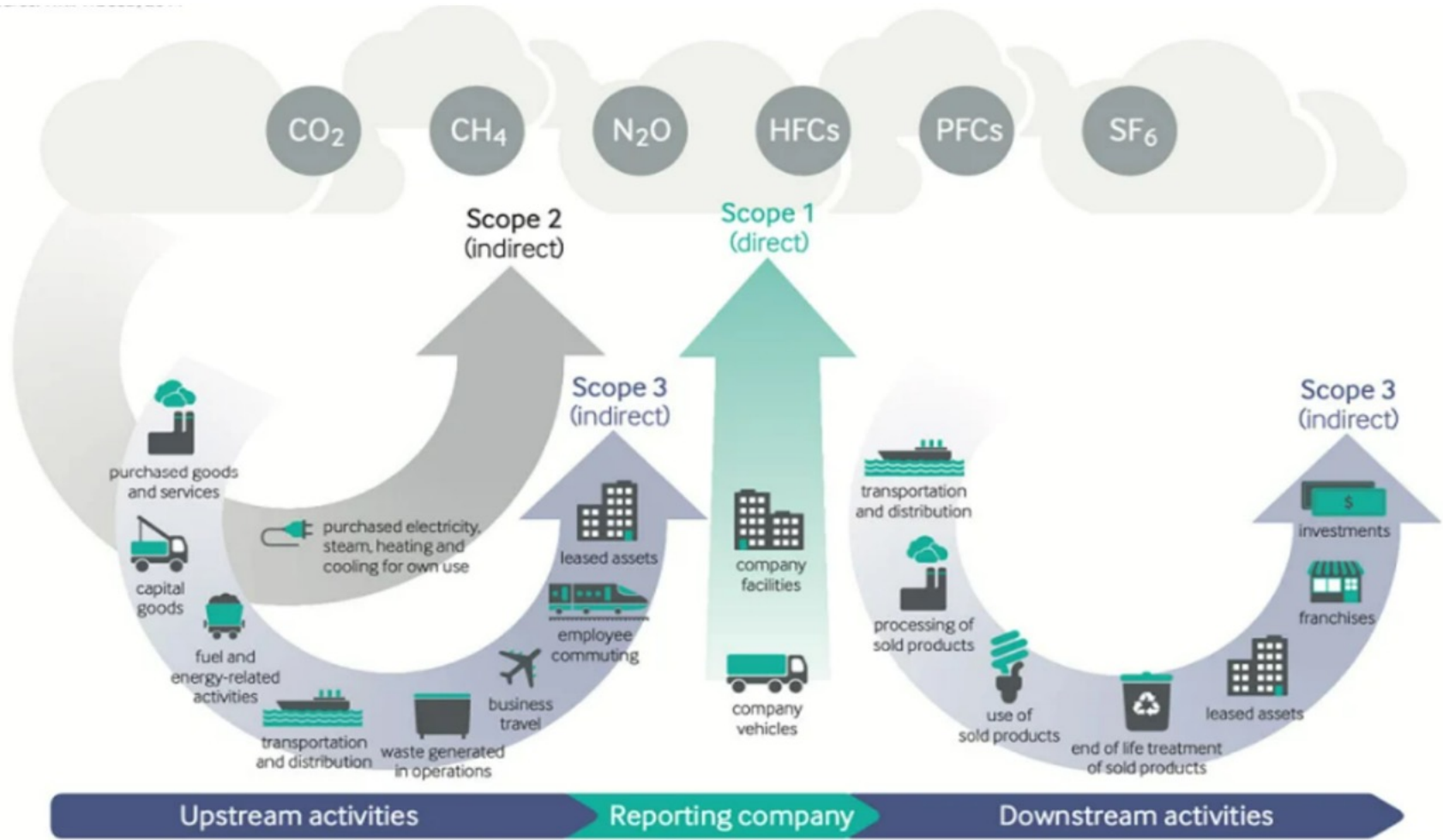


# EMISSIONS DATA CAPTURE/REPORTING OVERVIEW

What are the  
different  
Emissions  
Scopes?

Scope 1	Scope 2	Scope 3
Fuel combustion Company vehicles Fugitive emissions	Purchased electricity, heat and steam	Purchased goods and services  Business travel  Employee commuting Waste Disposal Use of sold products  Transportation and distribution (up- and downstream)  Investments  Leased assets and franchises

# DIFFERENT EMISSION SCOPE TYPES

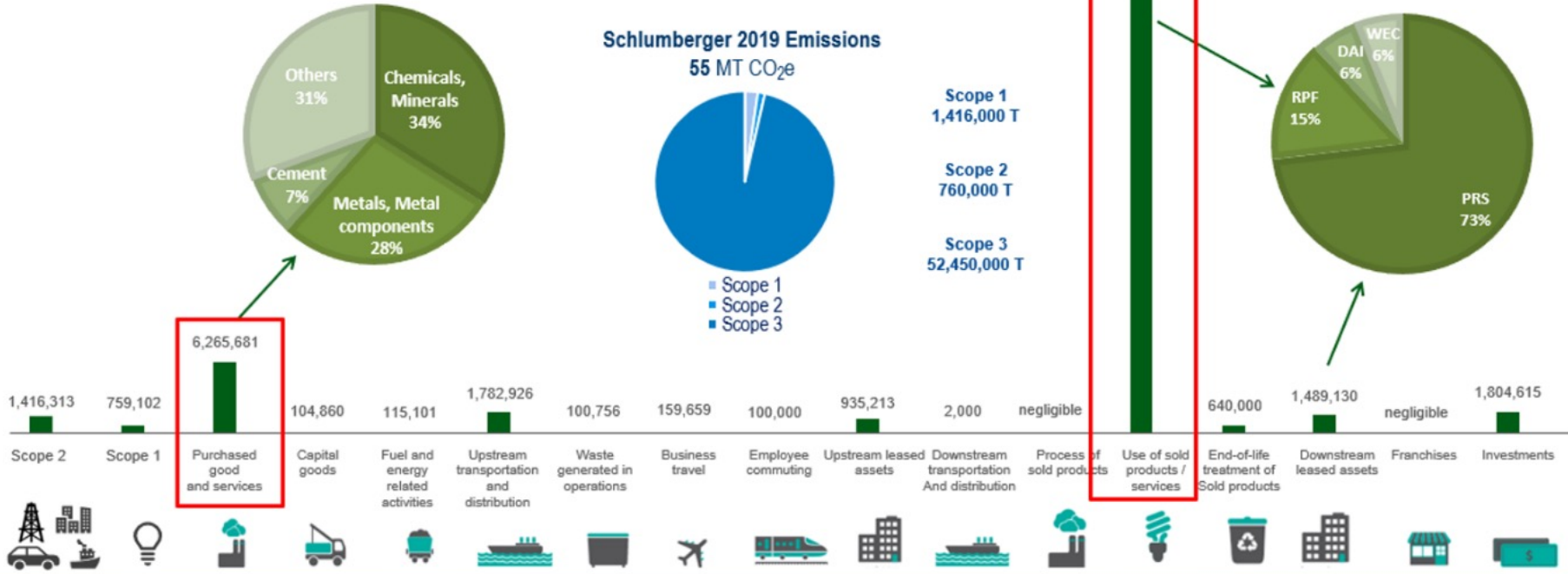


# SCHLUMBERGER EMISSIONS REPORTING

## Schlumberger Emissions 2019 – CO<sub>2</sub>e Tonnes



- 50% absolute reduction of Scope 1 and Scope 2 by 2030
- 30% absolute reduction of 89% of total Scope 3 by 2030



# ETDX POC PROJECT OVERVIEW

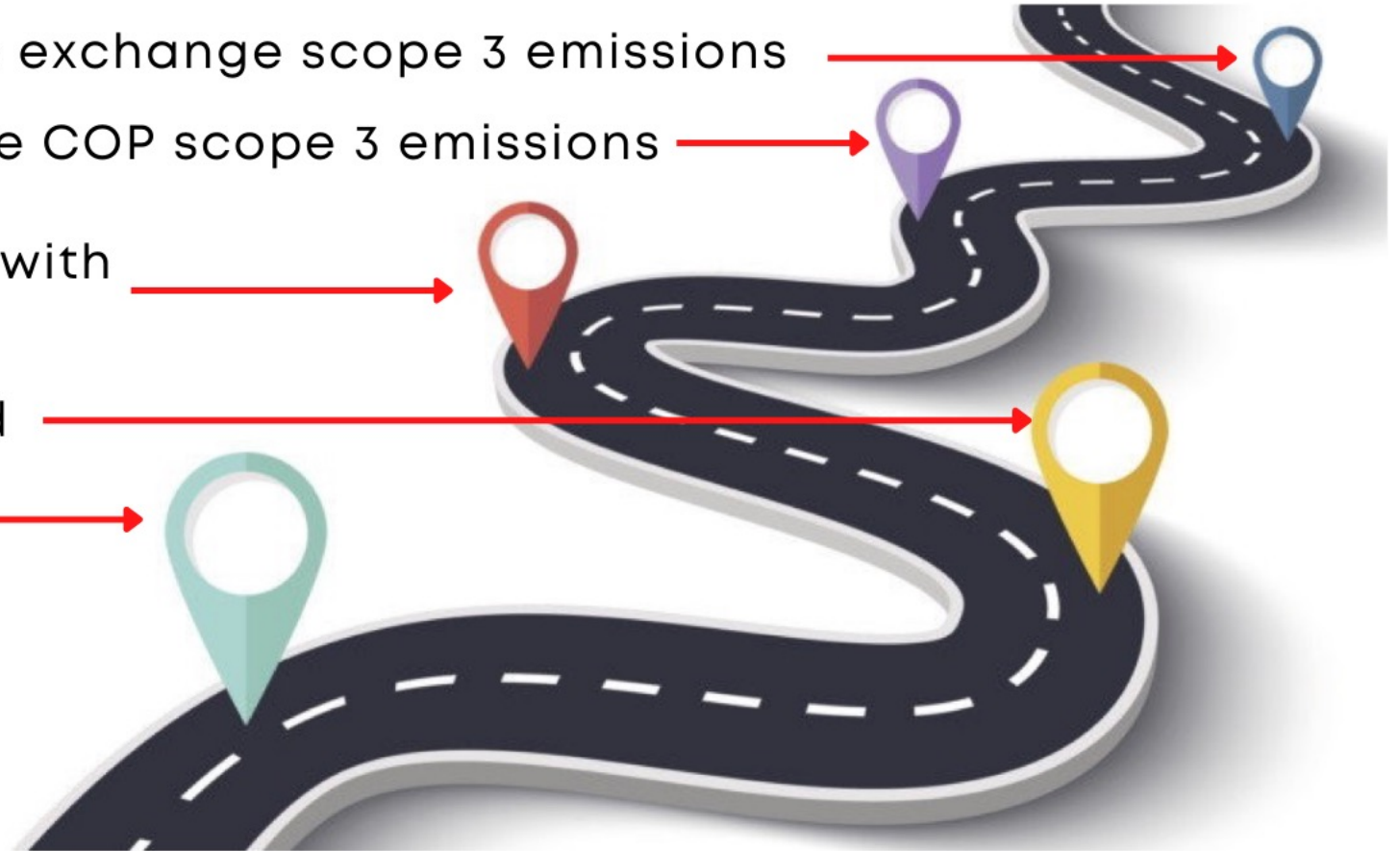
Explore transmission options to exchange scope 3 emissions

Partner with Supplier to capture COP scope 3 emissions

Operator combine data points with procurement transactions

Operator generates dashboard

Operator/Supplier Validation



# SCOPE 3 PROJECT CHALLENGES/LEARNING

---

- REPORTING ON SCOPE 3 EMISSIONS IS DIFFICULT, BUT POSSIBLE
- ORGANIZATION LEADERSHIP TEAM ALIGNMENT
- TRADING PARTNERS COLLABORATION KEY TO SUCCESS
- CAPTURING AND VALIDATING DATA VALUES BETWEEN TRADING PARTNERS IS POSSIBLE
- START EARLY ON EXPLORING OPTIONS TO MEET SEC REQUIREMENT



# NEXT STEPS

---

- APPROVING DRAFT PIDX FIELD TICKET AND INVOICE SCHEMA
- EXPAND ETDX COLLABORATION
- TRADING PARTNERS – (OPERATORS, SUPPLIERS, MARKETPLACE, OPEN FOOTPRINT FORUM, ETC.)

---

---

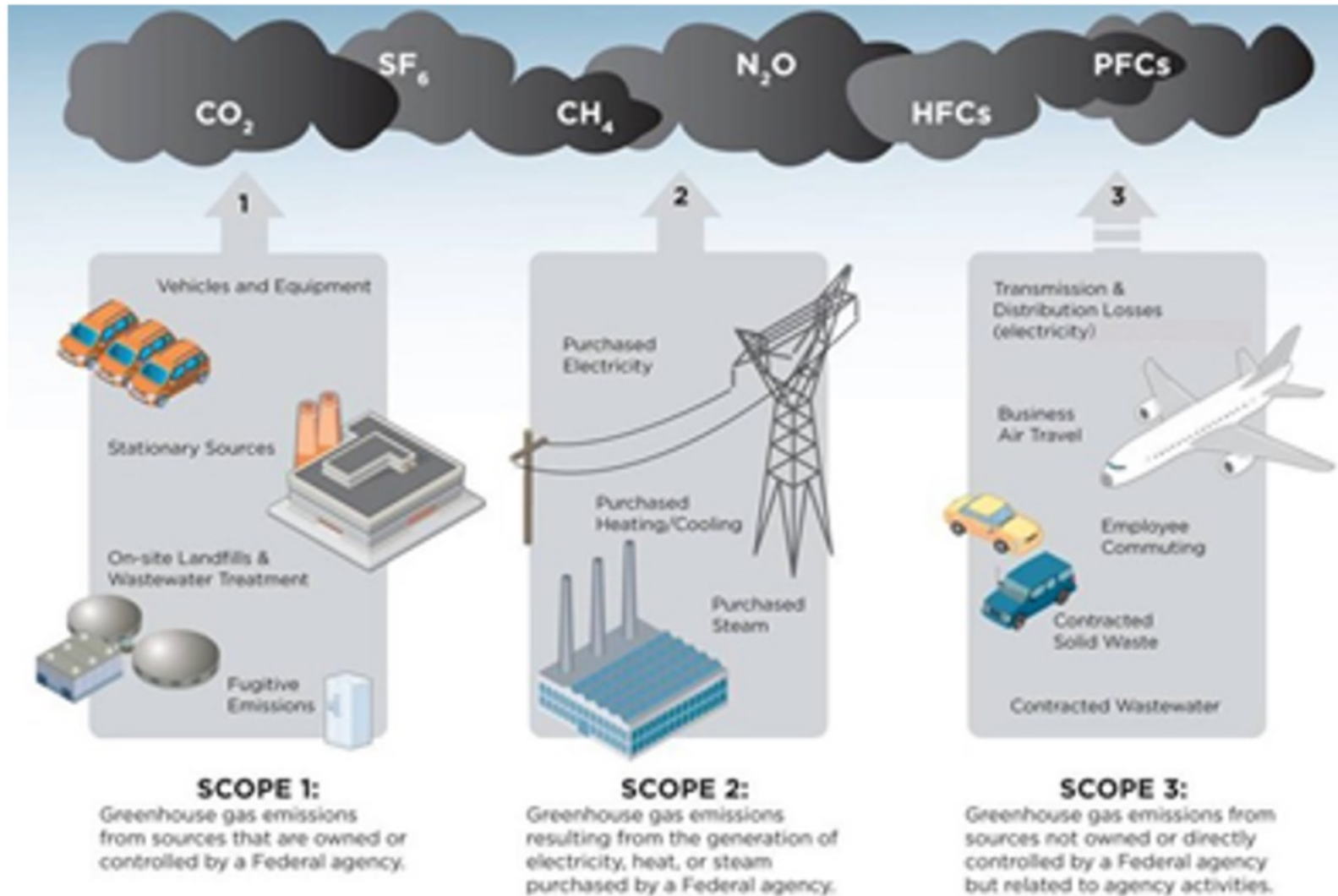
**QUESTIONS?**

---

---



# COMMON SOURCES OF FEDERAL GREENHOUSE GAS EMISSIONS



---

---

**QUESTIONS?**

---

---

